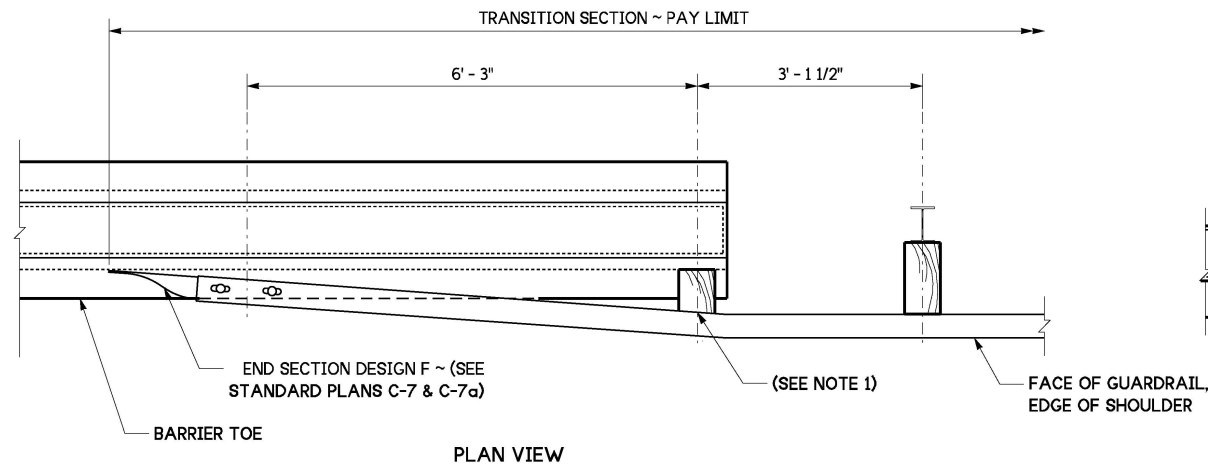
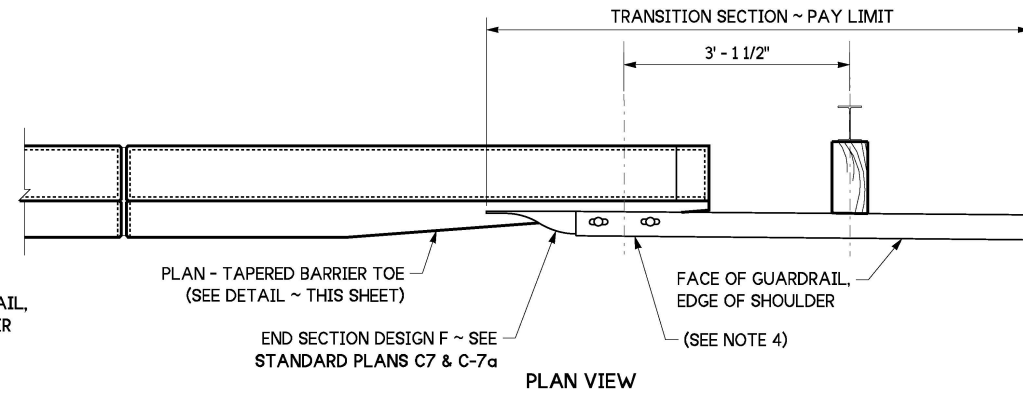


NOTES

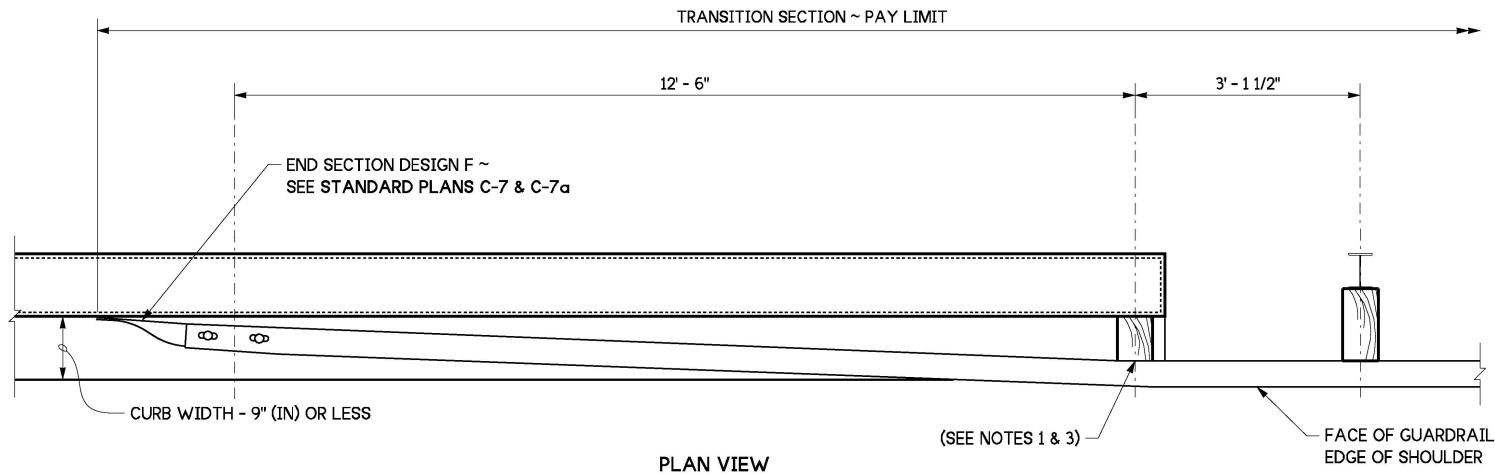
1. Attach guardrail to bridge rail or concrete barrier with 7/8" (in) diameter bolts with resin-bonded anchors per **Standard Specification, Section 9-06.4**.
2. Do not damage existing reinforcement. Core drilling allowed if existing reinforcement is located prior to drilling. Roughen edges of core drilled holes.
3. If the last guardrail post is 3" (in) or less from the end of the bridge barrier, this attachment and blockout is not necessary.
4. See **Bridge Plans** for additional connection details.
5. Wood blocks shown. Blocks of alternate material may be used. See **Standard Specification, Section 9-16.3 (2)**.
6. Steel posts shown. Timber posts may be used.



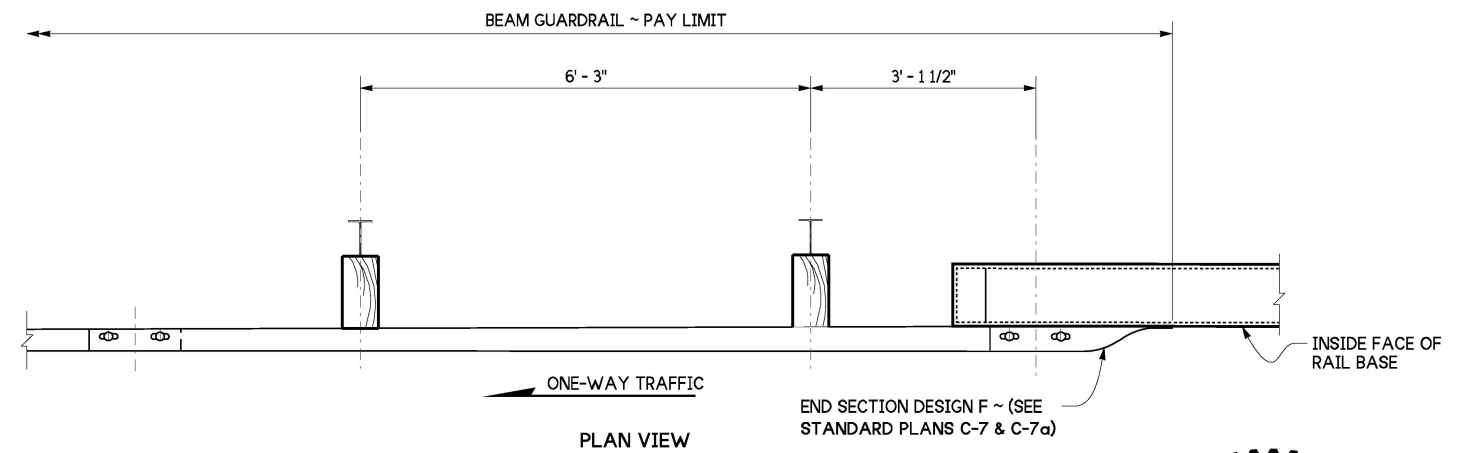
A CONNECTION
FOR UNRESTRAINED PRECAST CONCRETE BARRIER (TYPE F, TYPE 2)
(TYPE F SHOWN)



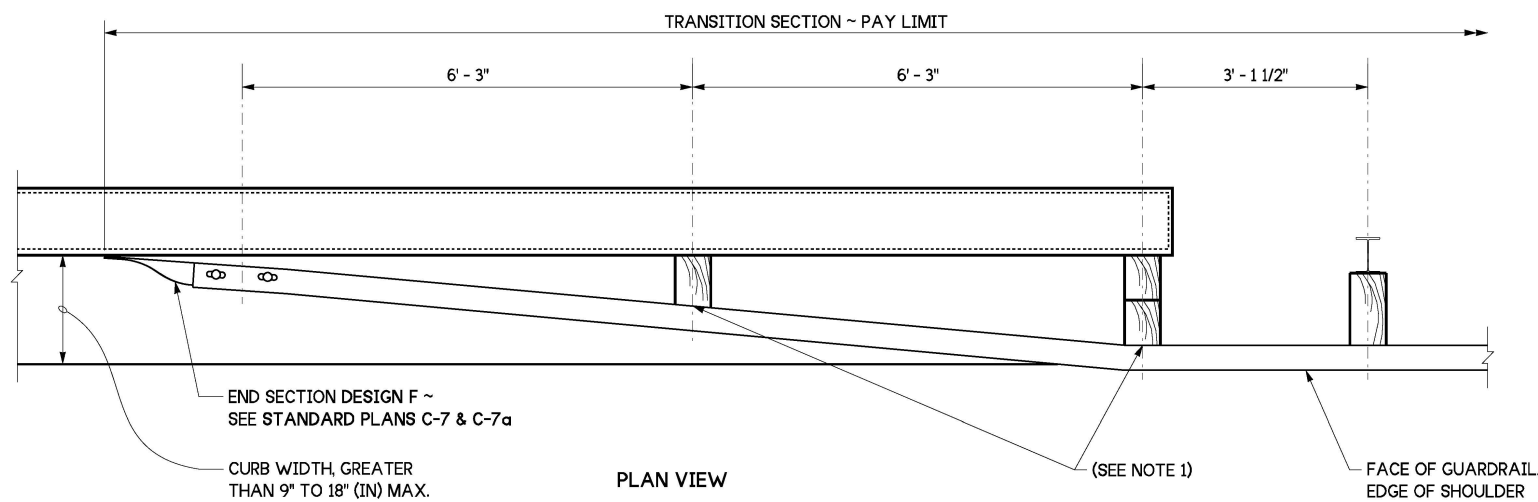
D CONNECTION
FOR VERTICAL WALLS, SINGLE SLOPE BRIDGE RAIL, SINGLE SLOPE CONCRETE BARRIER, TAPERED SAFETY SHAPE BRIDGE RAIL (TYPE F OR TYPE 2), AND TAPERED SAFETY SHAPE CONCRETE BARRIER WITH ANCHORS (TYPE F, TYPE 2) (TAPERED SAFETY SHAPE BARRIER SHOWN)



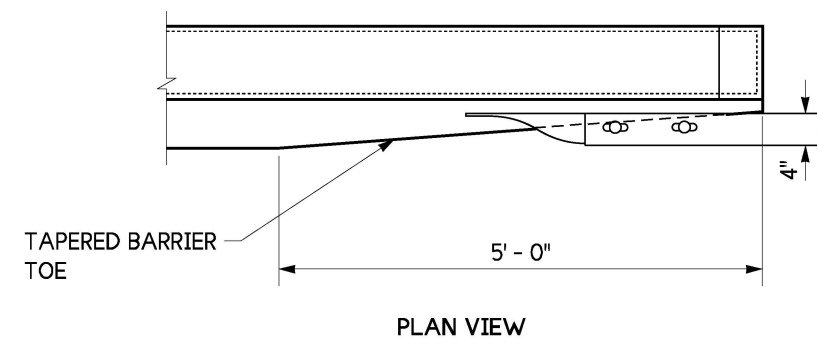
B CONNECTION
FOR BRIDGE RAILS WITH CURBS 9" (IN) OR LESS, UNTAPERED SAFETY SHAPE BRIDGE RAIL (TYPE F, TYPE 2), AND UNTAPERED SAFETY SHAPE CONCRETE BARRIER WITH ANCHORS (TYPE F, TYPE 2).



F CONNECTION
FOR ALL BRIDGE RAIL AND CONCRETE BARRIER TYPES LOCATED ON TRAILING ENDS OF ONE-WAY TRAFFIC ROADWAYS



C CONNECTION
FOR BRIDGE RAILS WITH CURBS BETWEEN 9" AND 18" (IN)



TAPERED BARRIER TOE DETAIL



Jul 18, 2024

GUARDRAIL CONNECTION TO BRIDGE RAIL OR CONCRETE BARRIER
STANDARD PLAN C-24.10-05

SHEET 1 OF 1 SHEET

APPROVED FOR PUBLICATION

Mark A. Poirier

Jul 21, 2024

STATE DESIGN ENGINEER

