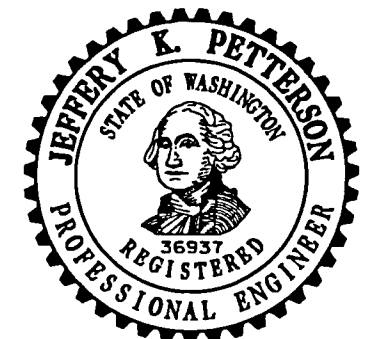
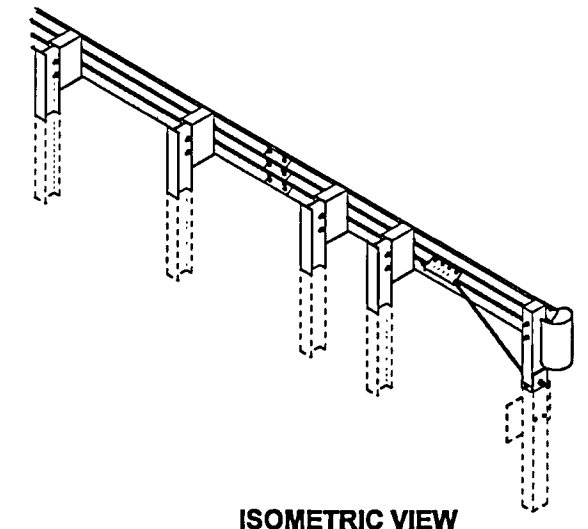
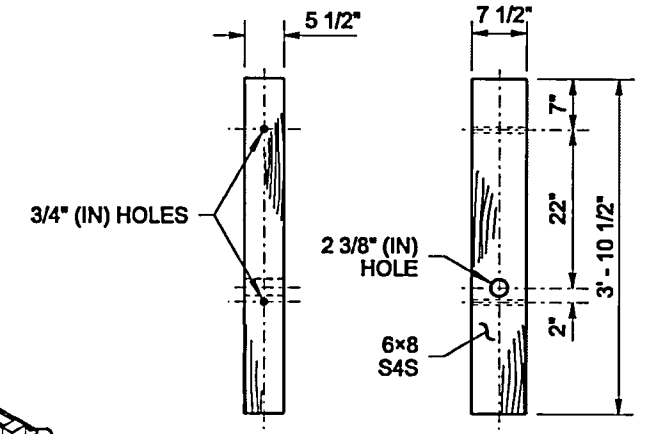
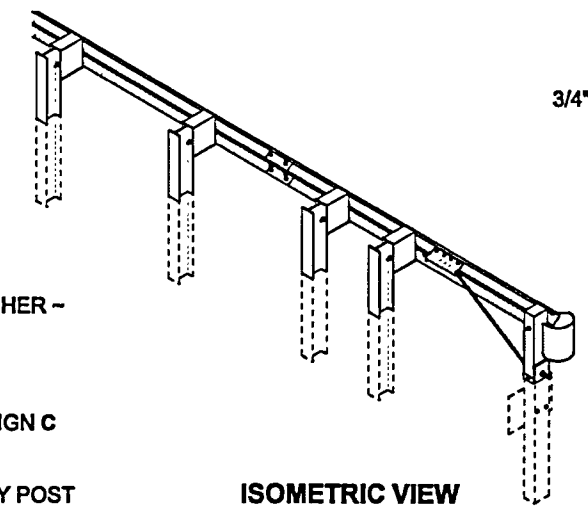


**NOTES**

1. For use on the end of guardrail runs when a crashworthy terminal is not required.
2. For additional details not shown, see **Sheet 2** of this Plan.
3. For end section details, see **Standard Plans C-7 and C-7a**.
4. Use details for Wood Breakaway post shown on this plan and components shown on **Standard Plan C-1b**.
5. Fasten the Anchor Cable using two 1" (in) nuts and washer, at both ends of cable. Outside nut shall be torqued against inside nut a minimum of 100 ft.-lbs.
6. Wood blocks shown. Blocks of alternate material may be used. See **Standard Specification, Section 9-16.3(2)**.
7. Posts shall match those of the connecting run: timber or steel.
8. Anchor plate may be constructed from 1/4" (in) plates welded to equal strength and dimensions as shown.
9. Eight 5/8" (in) x 1/2" (in) machine bolts with hex nut and washer. Place washer on face side of rail.



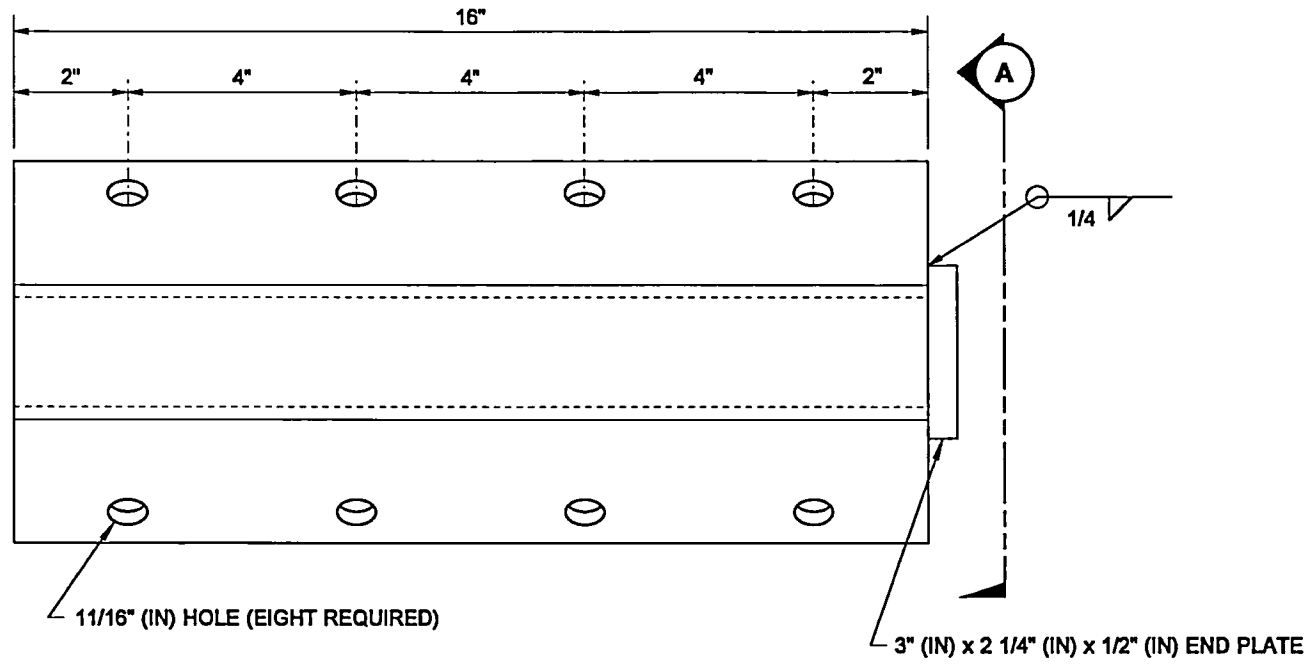
Petterson, Jeff (HIQ Design)  
Jul 6 2017 3:15 PM  
**BEAM GUARDRAIL (TYPE 31)  
ANCHOR TYPE 10**

**STANDARD PLAN C-23.60-04**  
SHEET 1 OF 2 SHEETS

APPROVED FOR PUBLICATION  
Carpenter, Jeff  
Jul 21 2017 8:25 AM  
STATE DESIGN ENGINEER  
Washington State Department of Transportation

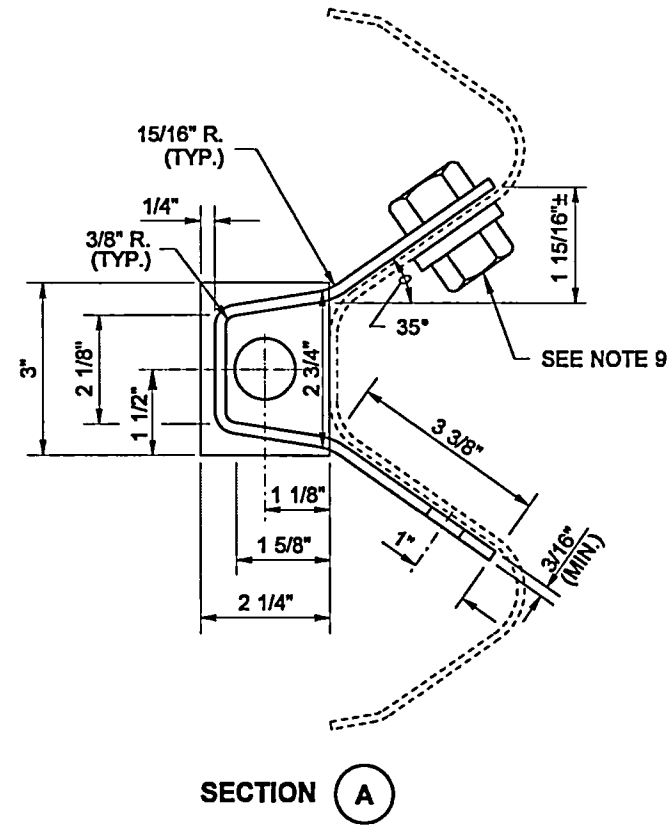
DRAWN BY: FERN LIDDELL

DRAWN BY: FERN LIDDELL

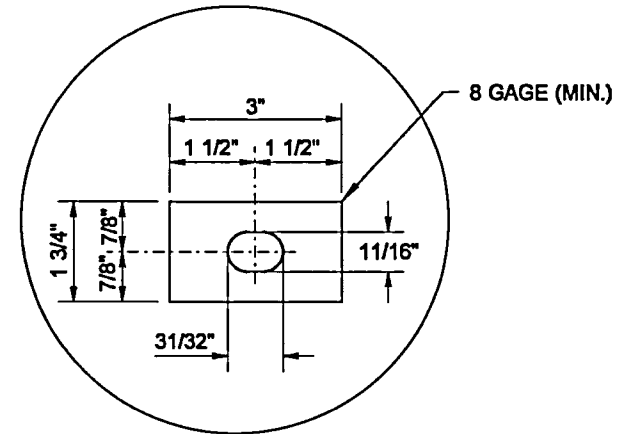


ELEVATION

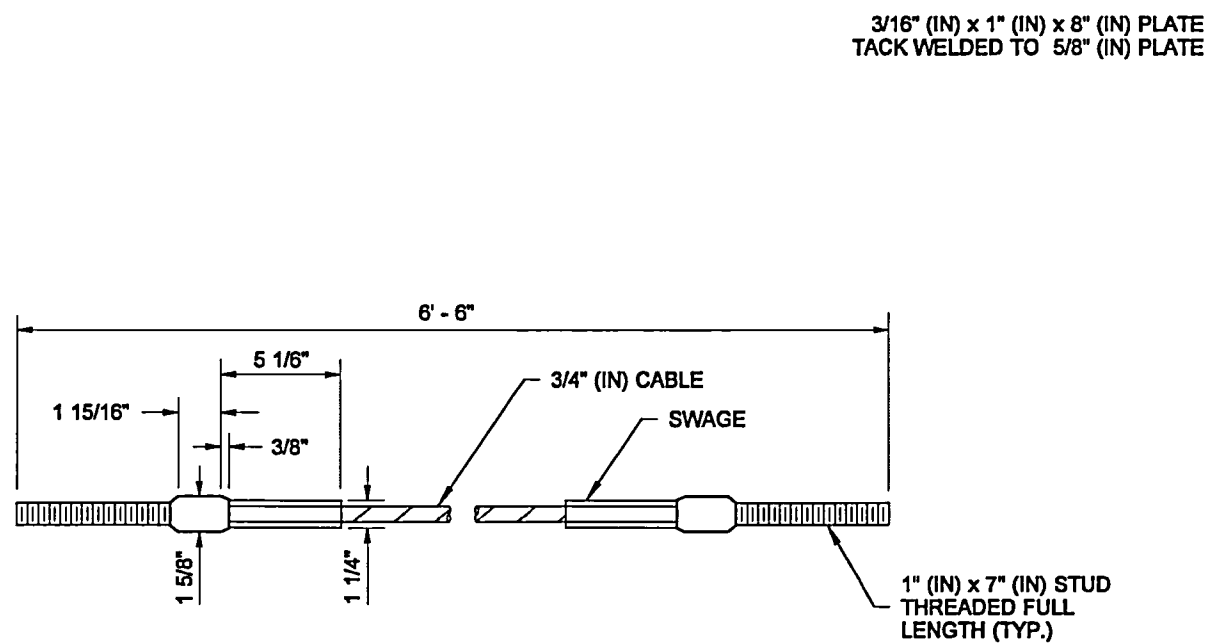
ANCHOR PLATE  
(SEE NOTE 8)



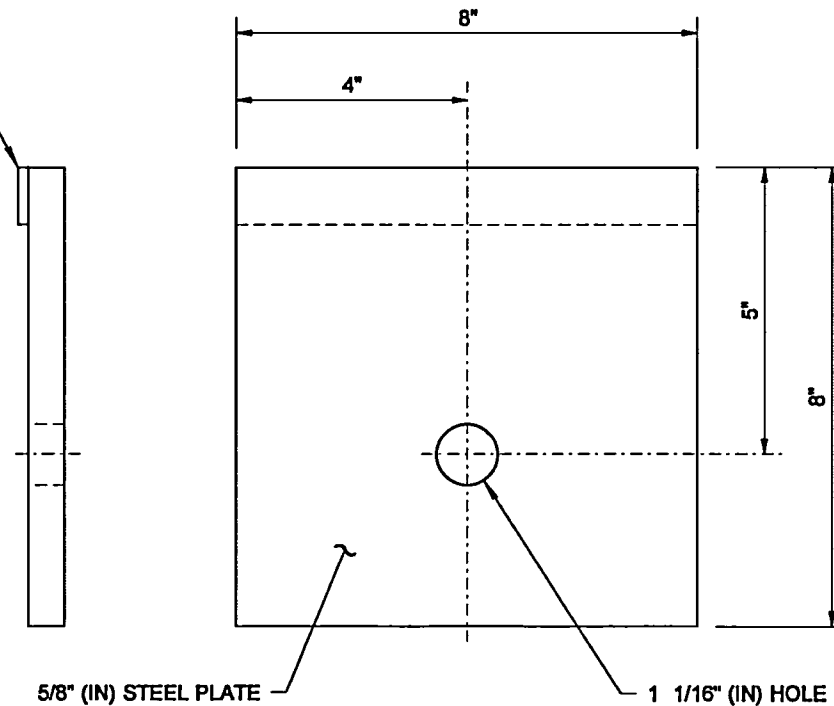
SECTION A



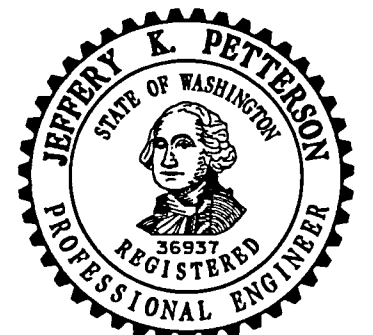
ANCHOR RAIL WASHER



ANCHOR CABLE



BEARING PLATE



Petterson, Jeff (HQ Design)  
Jul 6 2017 3:15 PM

**BEAM GUARDRAIL (TYPE 31)  
ANCHOR TYPE 10**

**STANDARD PLAN C-23.60-04**

SHEET 2 OF 2 SHEETS

APPROVED FOR PUBLICATION

Carpenter, Jeff  
Jul 21 2017 8:25 AM

STATE DESIGN ENGINEER

