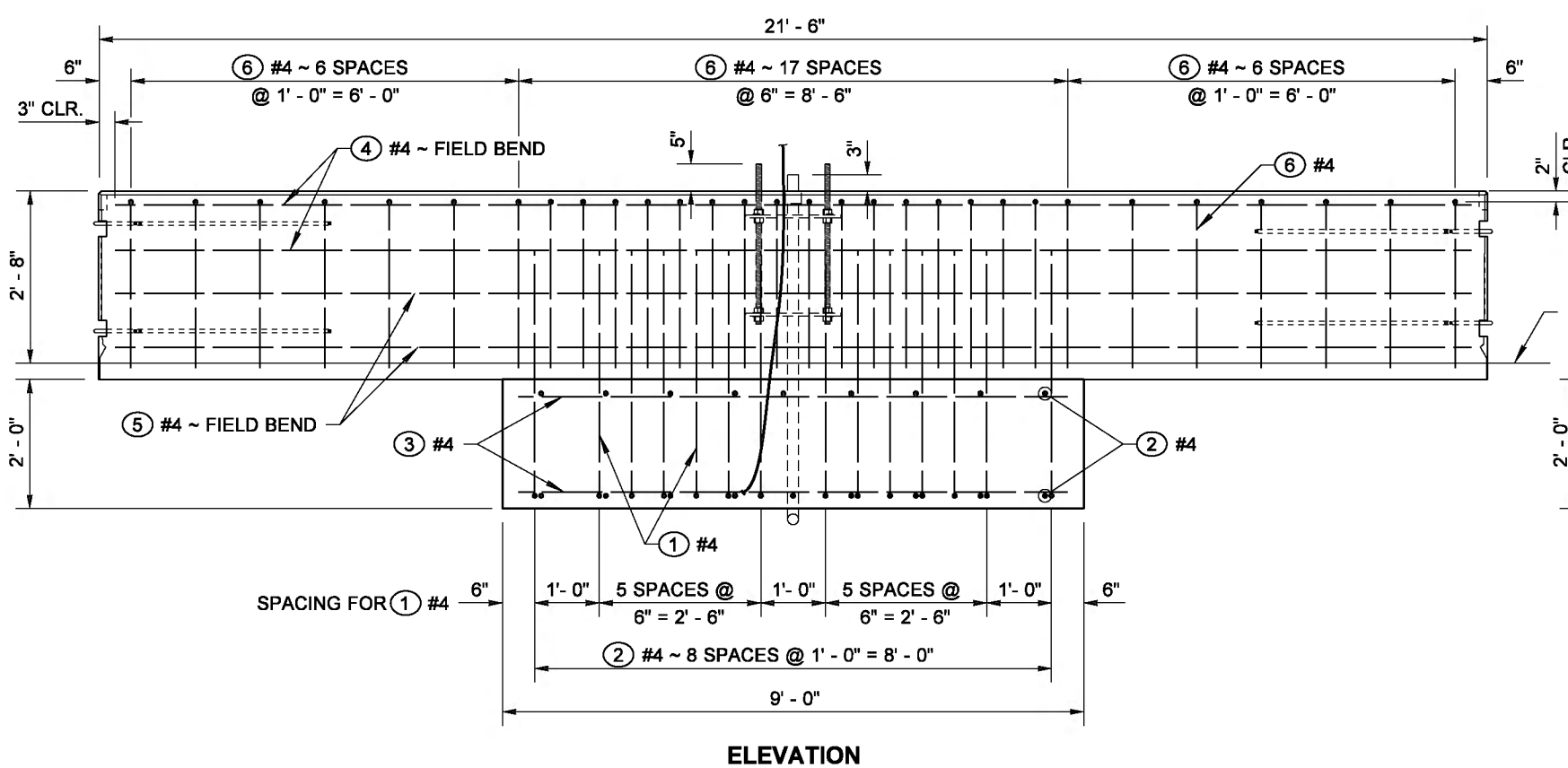
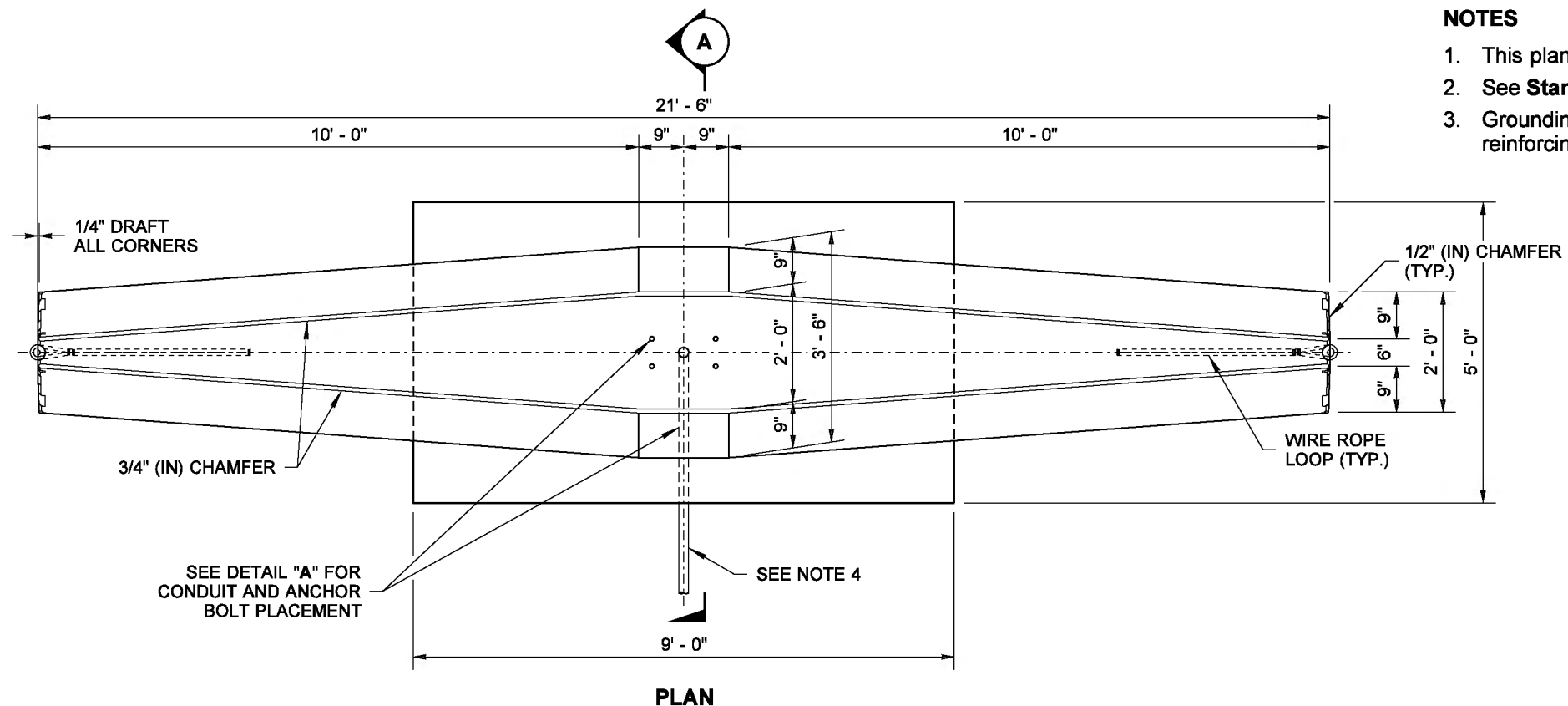
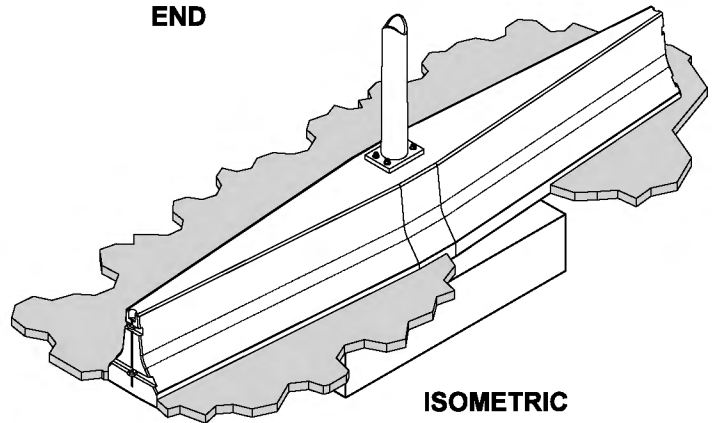
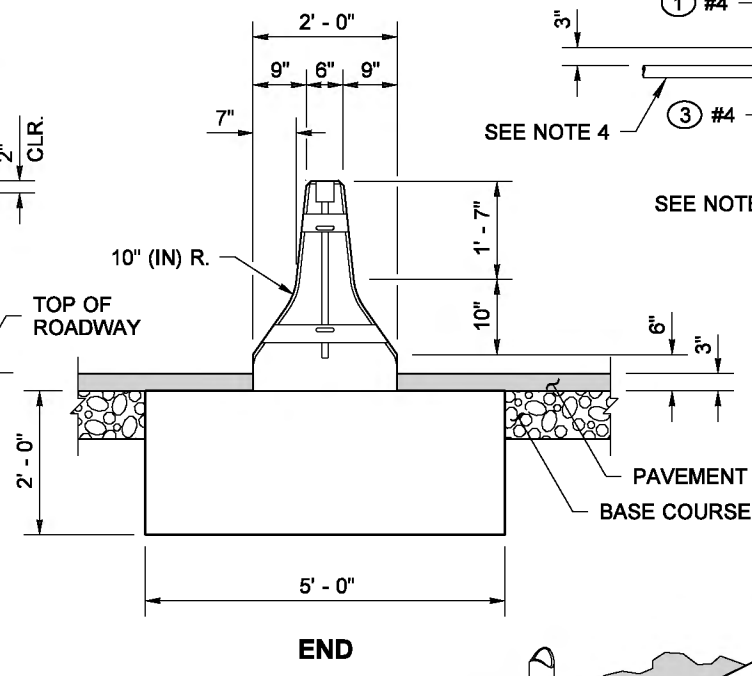
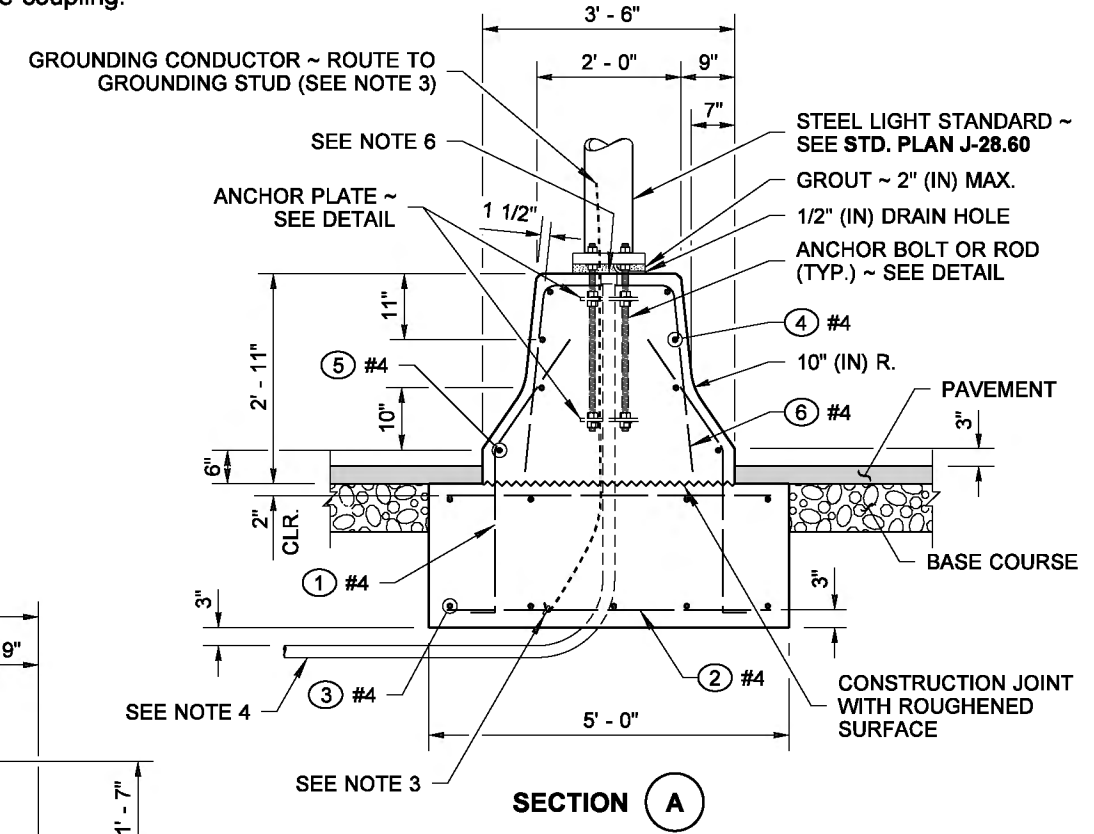


DRAWN BY: COLBY FLETCHER



NOTES

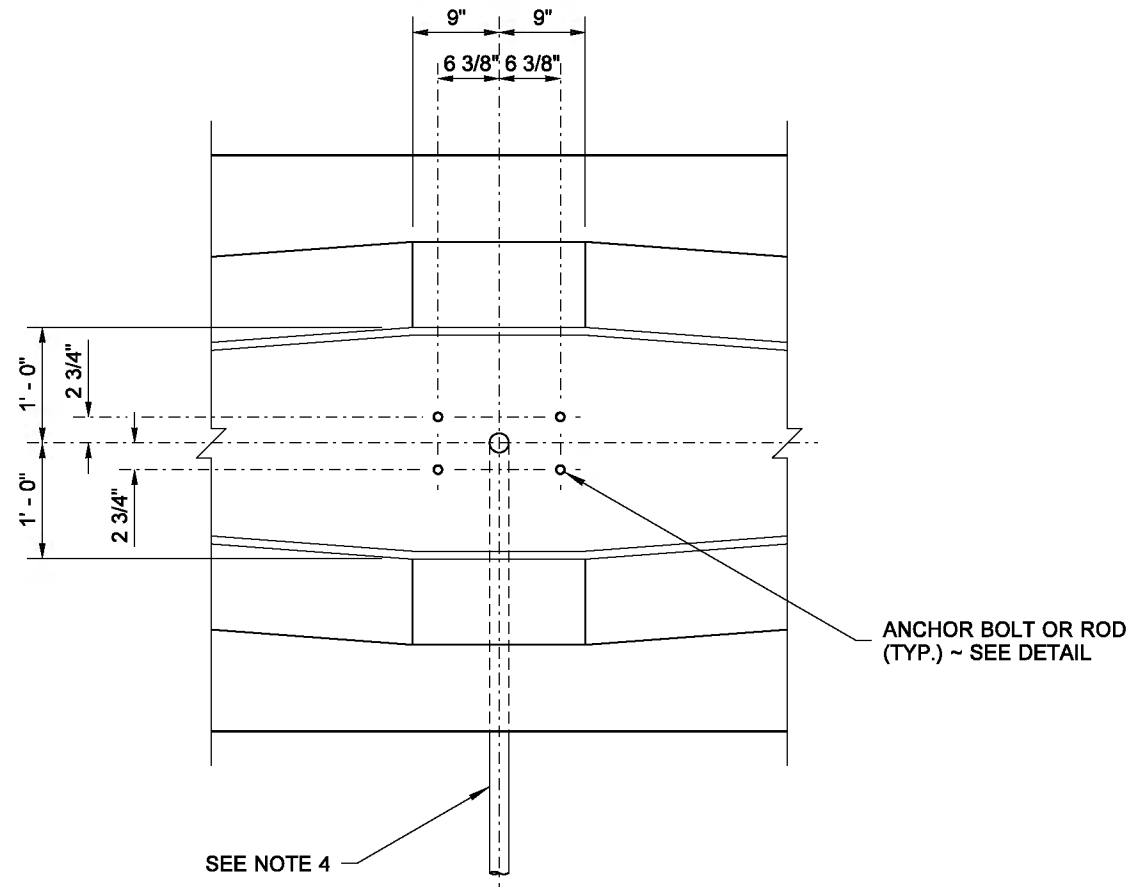
1. This plan shall be used for 40' (ft) and 50' (ft) Light Standards with 16' (ft) max. length double mast arms.
2. See **Standard Plan C-8** for details on barrier ends, Wire Rope Loops, and Connecting Pins.
3. Grounding Conductor shall be non-insulated #4 AWG stranded copper; provide 3' - 0" min. slack. Clamp to steel reinforcing bar with connector suitable for use embedded in concrete.
4. See the Contract Plans for conduit size and placement.
5. Concrete shall be Class 4000.
6. Install conduit couplings on all conduits. Place coupling tops flush with top of concrete. If PVC conduits are specified, the conduit stub and end bell bushing shall not be glued to the coupling.



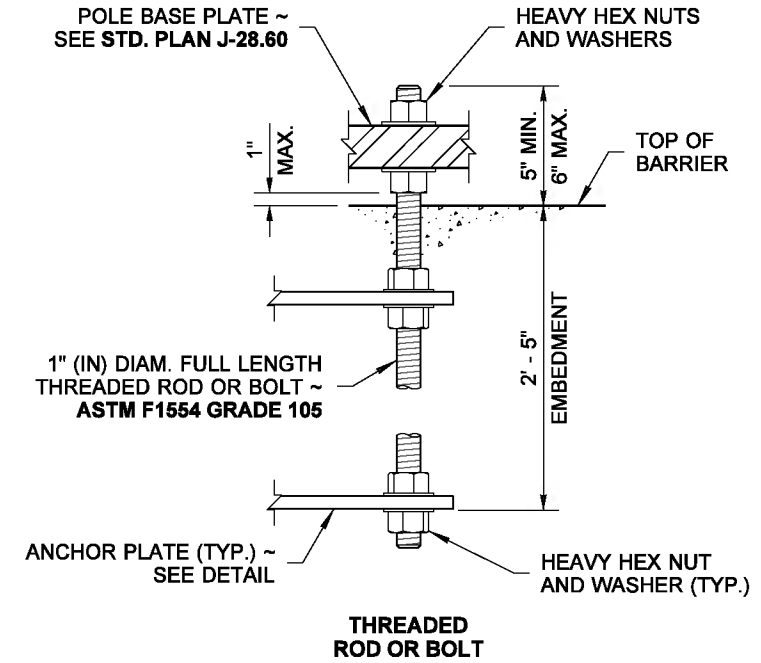
**CONCRETE BARRIER
LIGHT STANDARD SECTION
STANDARD PLAN C-8b**

SHEET 1 OF 2 SHEETS
APPROVED FOR PUBLICATION

DRAWN BY: COLBY FLETCHER

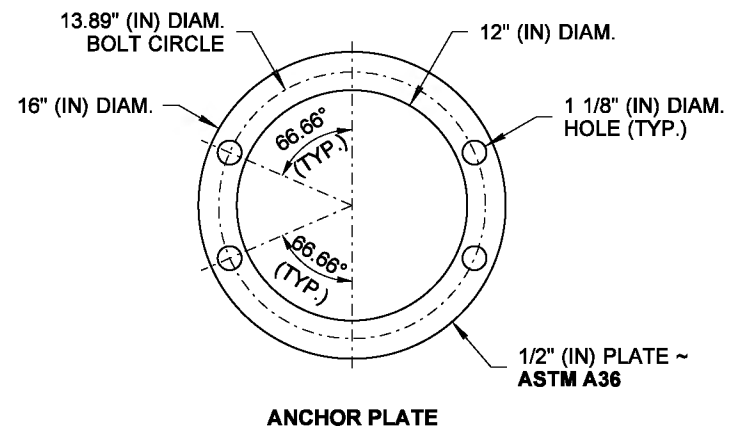


DETAIL "A"

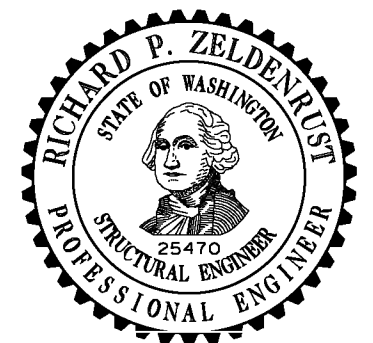


ANCHOR BOLT DETAIL

ALL NUTS, BOLTS, WASHERS, AND RODS SHALL BE FULLY GALVANIZED IN ACCORDANCE WITH **ASTM F2329**



ANCHOR PLATE



BAR LIST					BENDING DIAGRAM		
MARK	LOCATION	QTY.	SIZE	LENGTH	(ALL DIMENSIONS ARE OUT TO OUT)		
①	FOOTING - DOWEL	28	#4	4' - 3"			
②	FOOTING	18		4' - 8"			
③	FOOTING	9		8' - 8"			
④	BARRIER	4		21' - 0"	④	⑥	
⑤	BARRIER	4		21' - 0"			
⑥	BARRIER	30		5' - 3" TO 6' - 9"			

**CONCRETE BARRIER
LIGHT STANDARD SECTION
STANDARD PLAN C-8b**

SHEET 2 OF 2 SHEETS

APPROVED FOR PUBLICATION