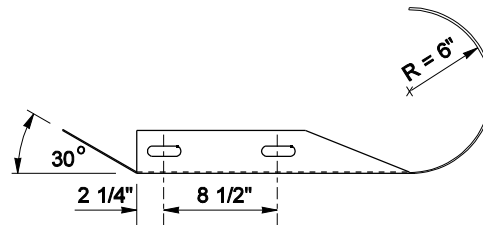
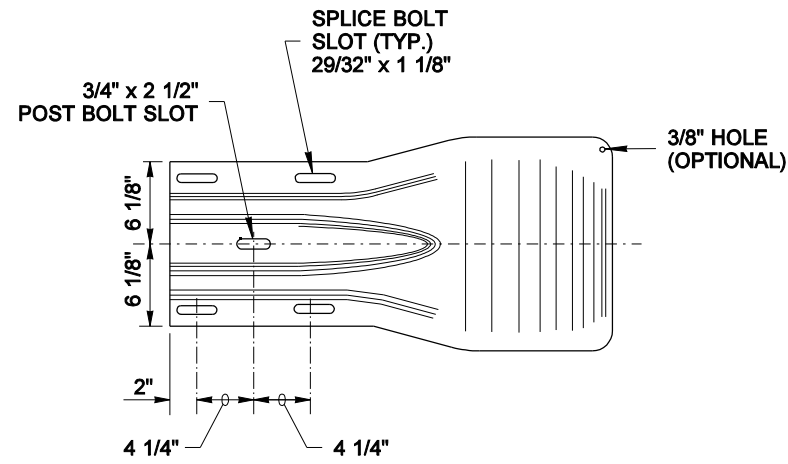


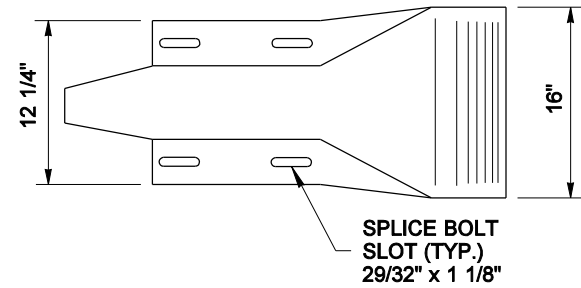
PLAN



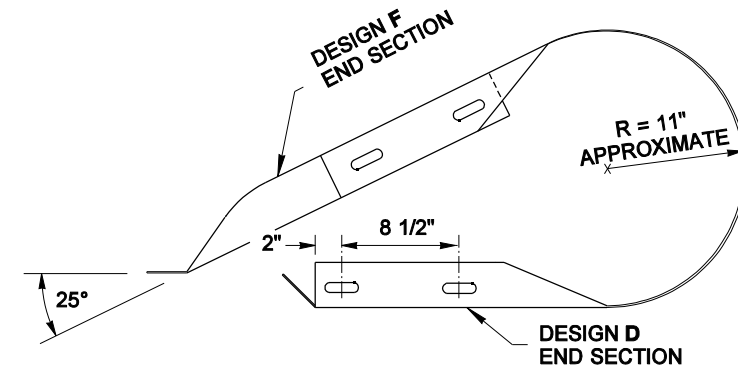
PLAN



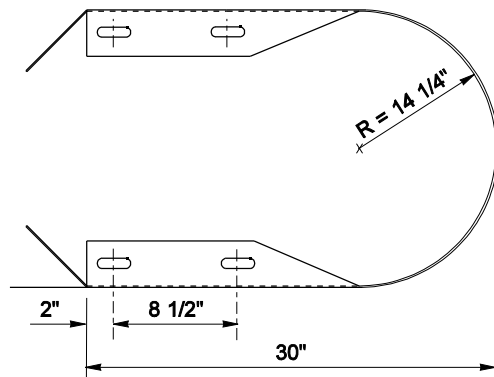
**ELEVATION
DESIGN A**



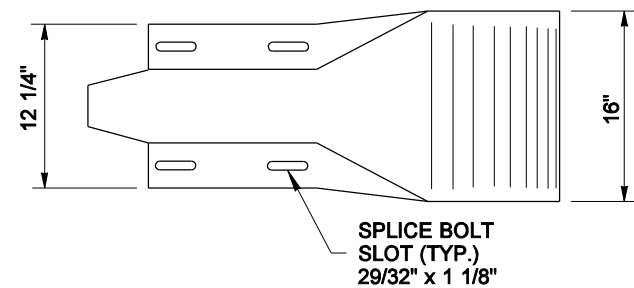
**ELEVATION
DESIGN C**



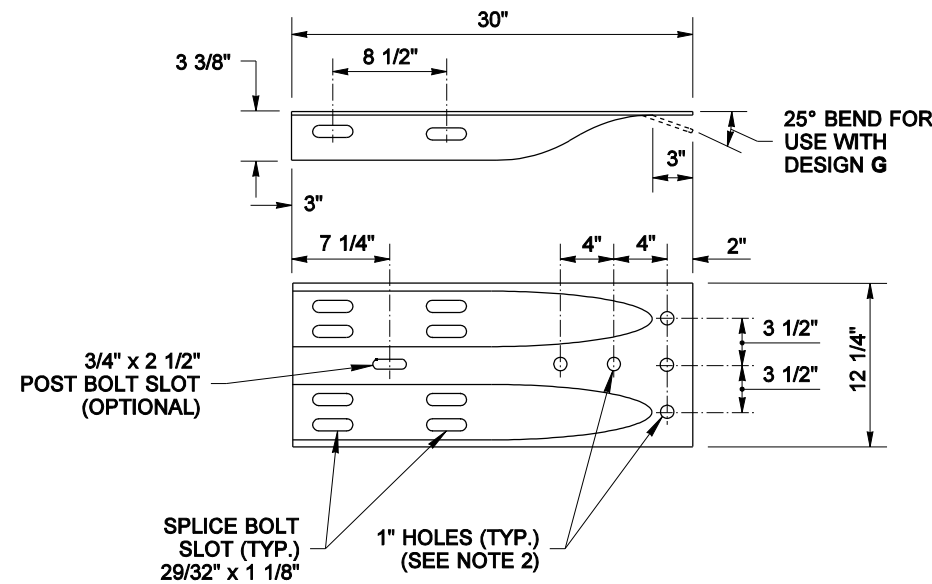
PLAN



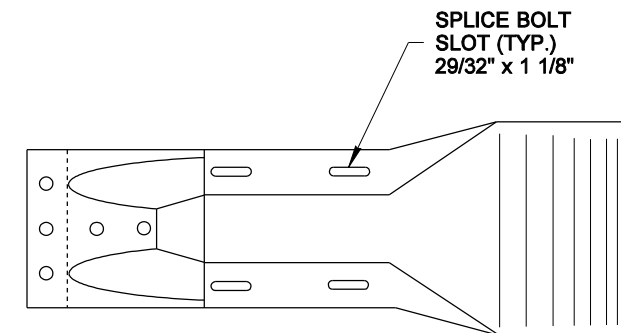
PLAN



**ELEVATION
DESIGN D**



**ELEVATION
DESIGN F
(SEE NOTE 4)**



**ELEVATION
DESIGN G
(SEE NOTE 3)**

NOTES

1. End Section Design G shall be used except where noted on the plans or contract.
2. Attach guardrail to bridge rail or concrete barrier with 7/8" diameter bolts (five minimum) **Standard Spec. 9-06.5(4)**, with thin slab ferrule inserts or resin bonded anchors. See the Contract Plans.
3. A single piece having similar dimensional shape to Design G and mating with the W-beam guardrail is an alternate.
4. In cases where Design "F" end section is lapped on the outside of the guardrail, a galvanized 1" ID, 2" OD, 0.134" thick, narrow Type A Plain Washer or a anchor rail washer shall be placed under the splice bolt heads.



NOTE: THIS PLAN IS NOT A LEGAL ENGINEERING DOCUMENT UNTIL IT IS APPROVED FOR PUBLICATION BY THE ENGINEER AND APPROVED FOR RELEASE BY THE FILE AT THE WASHINGTON STATE DEPARTMENT OF TRANSPORTATION. A COPY MAY BE OBTAINED UPON REQUEST.

**BEAM GUARDRAIL
END SECTIONS**

STANDARD PLAN C-7

SHEET 1 OF 1 SHEET

APPROVED FOR PUBLICATION

Pasco Bakotich III 06-16-11

STATE DESIGN ENGINEER DATE

