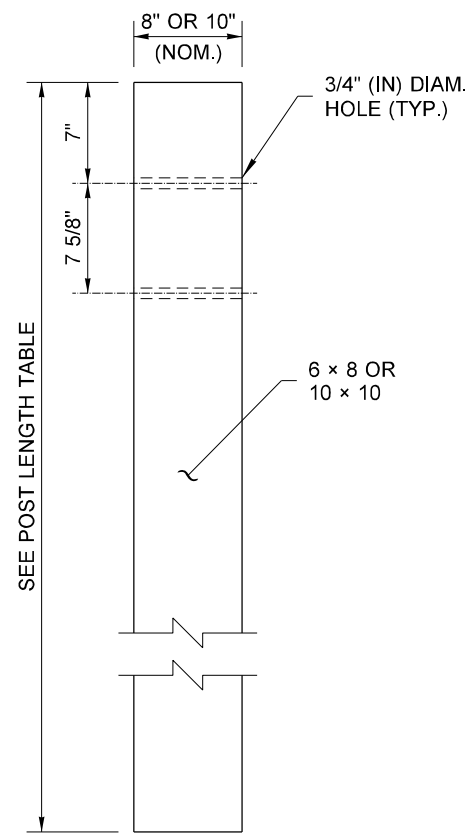
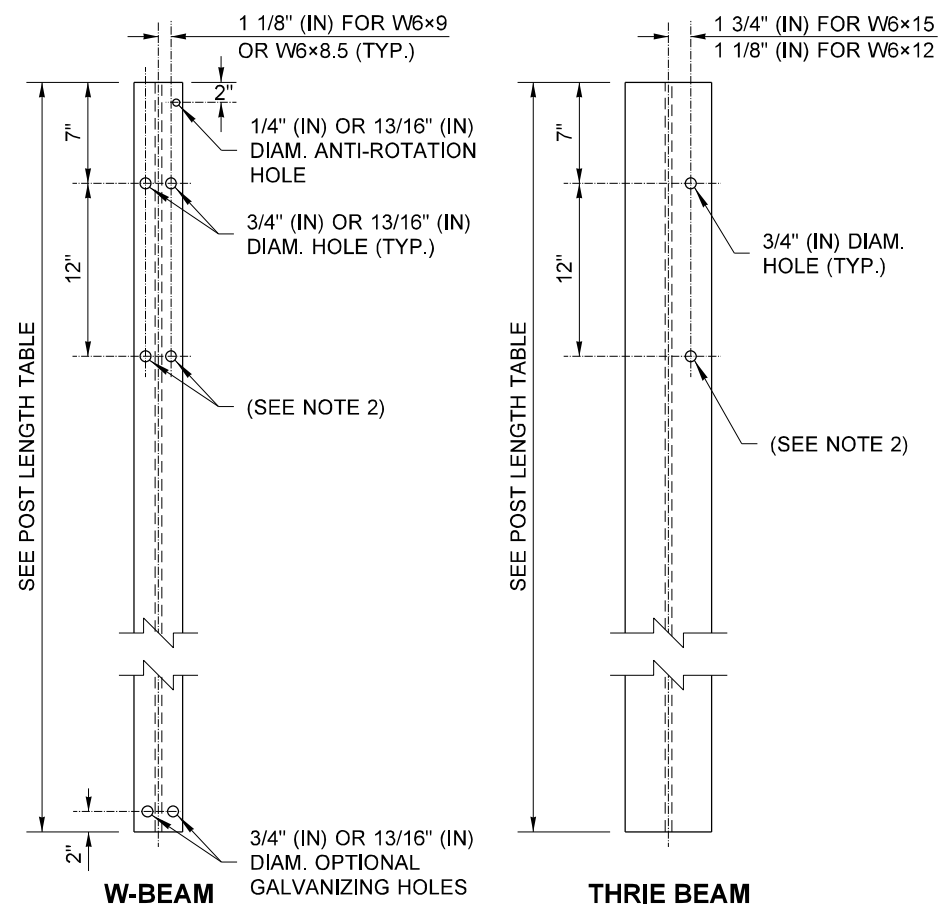


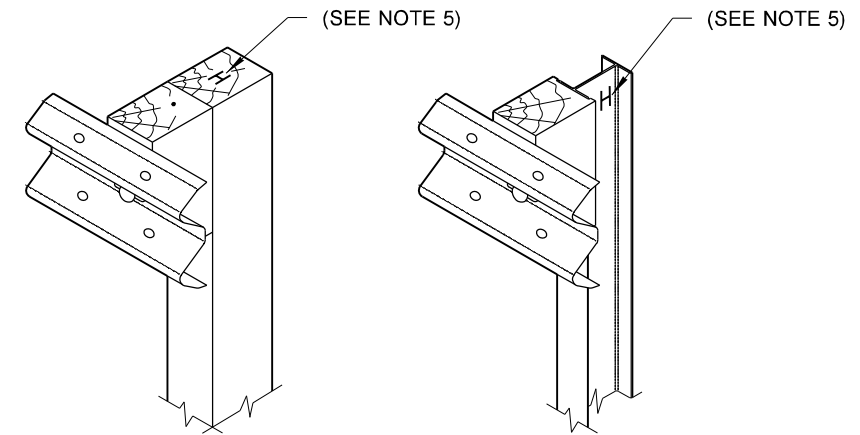
W-BEAM



THRIE BEAM



STEEL POST  
(SEE NOTES 3 AND 4)



TIMBER POST

STEEL POST

PARTIAL ASSEMBLY DETAIL

**NOTES**

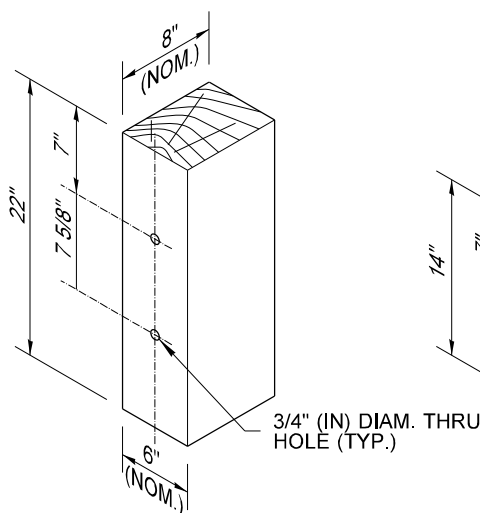
1. Wood posts for all guardrail placement plans shall be 6 x 8 except where noted otherwise.
2. Lower hole is for w-beam rub rail of Beam Guardrail Type 31-Buried Terminal Type 2.
3. W6x8.5 or W6x9 steel posts and timber blocks are alternates for 6x8 timber posts and blocks. W6x15 steel posts and timber blocks are alternates for 10x10 timber posts and blocks.
4. Attach blockouts to steel posts using bolt holes on approaching traffic side of post web.
5. When "Beam Guardrail Type - \_\_ Ft. Long Post" is specified in the Contract, the post length shall be stamped with numbers, 1 1/2" (in) min. high and 3/4" (in) wide at the location where the letter "H" is shown in the ASSEMBLY DETAIL. For wood post applications, the letter shall be stamped to a minimum depth of 1/4" (in). For steel post applications, the letter shall be legible after the post is galvanized. After post installation, it shall be the Contractor's responsibility to ensure the stamped numbers remain visible.

**WOOD POST**

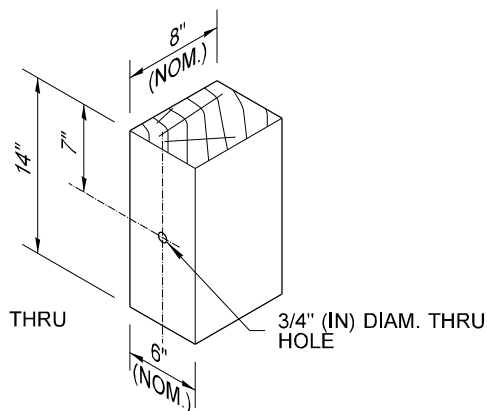
POST LENGTH TABLE	
GUARDRAIL TYPE	LENGTH
TYPE 31	6' - 0" *
THRIE BEAM	VARIABLES **

\* SEE CONTRACT FOR "BEAM GUARDRAIL TYPE - \_\_ FT. LONG POST" LENGTHS. (SEE NOTE 5)

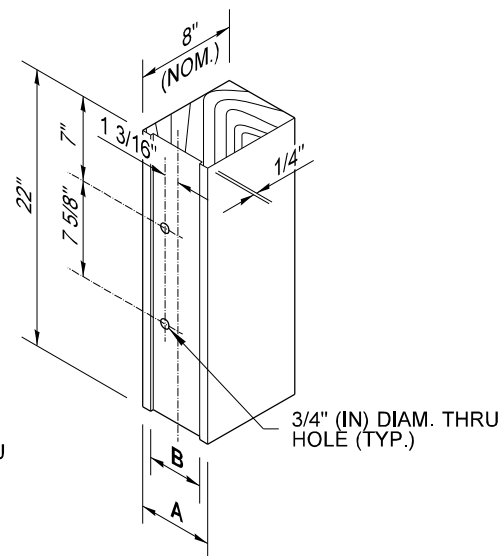
\*\* SEE STANDARD PLANS FOR THRIE BEAM POST LENGTHS



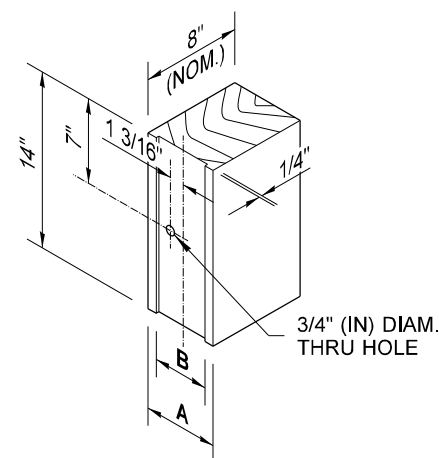
THRIE BEAM WOOD BLOCK FOR WOOD POST



W-BEAM WOOD BLOCK FOR WOOD POST



THRIE BEAM WOOD BLOCK FOR STEEL POST



W-BEAM WOOD BLOCK FOR STEEL POST

WOOD BLOCKS FOR STEEL POST TABLE		
POST	A	B
W6 x 8.5	6" ***	4 1/4"
W6 x 9	6" ***	4 1/4"
W6 x 12	6" ***	4 1/4"
W6 x 15	8" ***	6 1/4"

\*\*\* NOMINAL (NOM.)



Sep 8, 2022

**BEAM GUARDRAIL POSTS AND BLOCKS**

**STANDARD PLAN C-1b**

SHEET 1 OF 1 SHEET

APPROVED FOR PUBLICATION  
*Mark Gaines*  
 Mark Gaines (Sep 8, 2022 10:16 PDT) Sep 8, 2022  
 STATE DESIGN ENGINEER  
 Washington State Department of Transportation

DRAWN BY: FERN LIDDELL