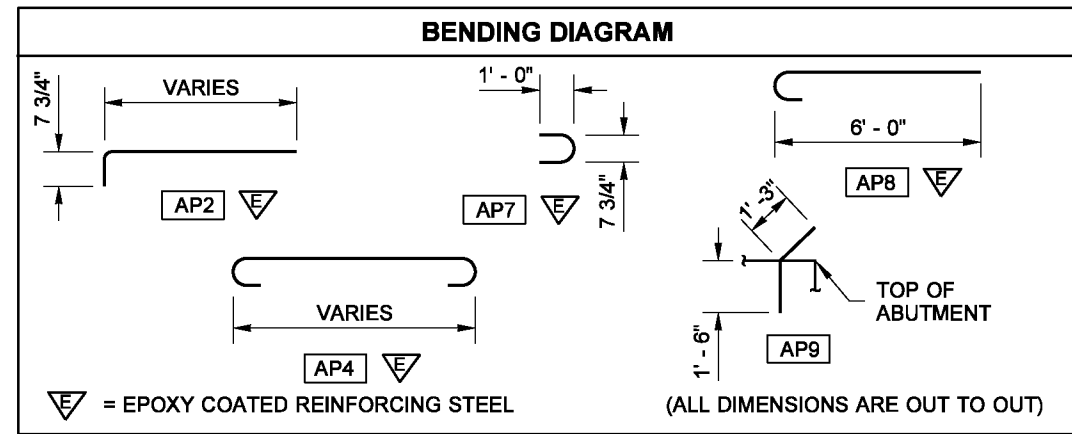
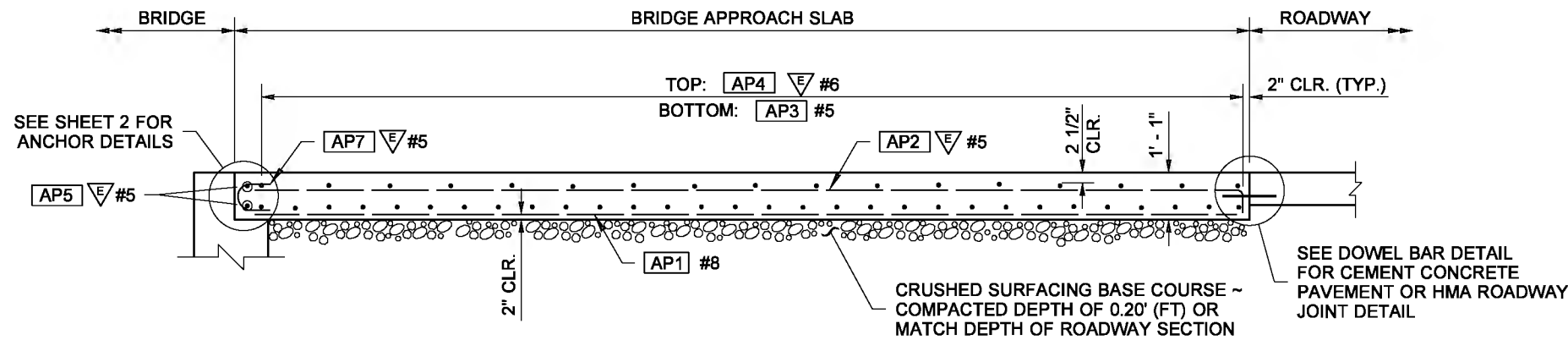
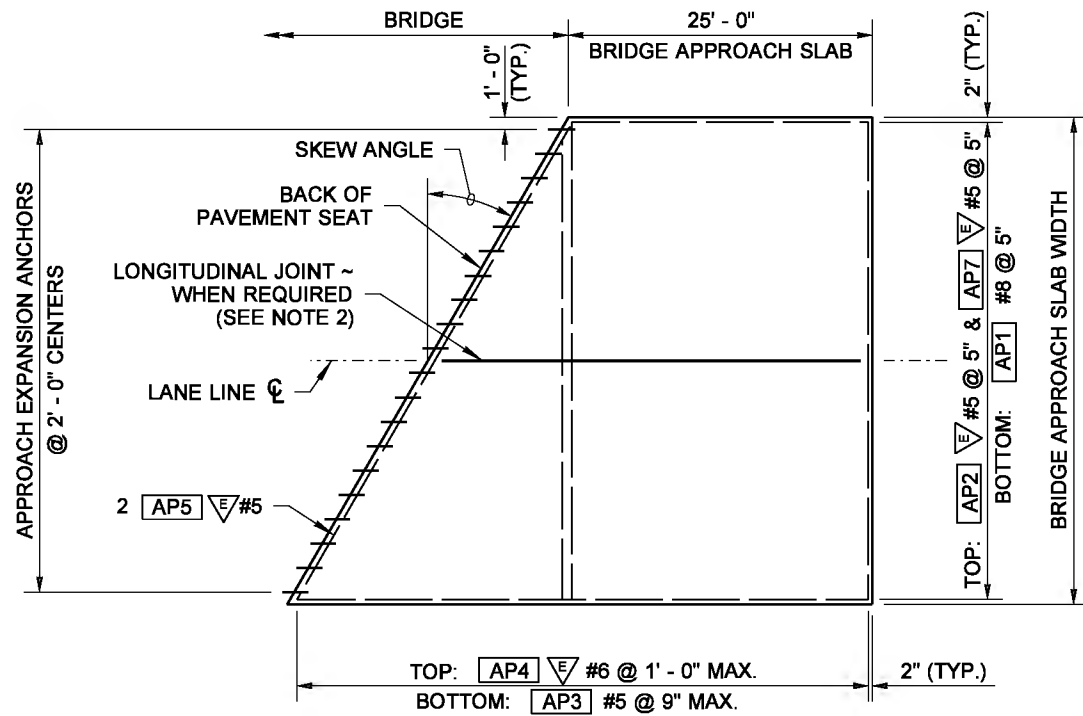


DRAWN BY: COLBY FLETCHER

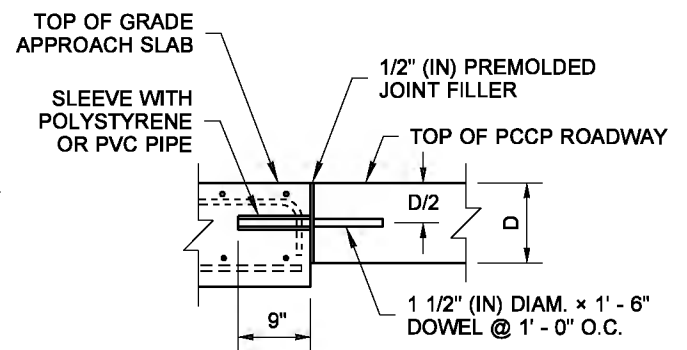
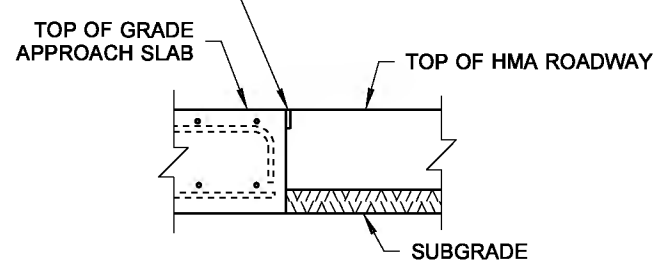


AP8 #6 BARS SHALL BE PLACED WITH THE AP4 #6 BARS ALONG EACH EDGE OF BRIDGE APPROACH SLAB HAVING A TRAFFIC BARRIER.

NOTES

- All edges of the approach slab shall have 1/2" (in) radii except at longitudinal construction joints and adjacent to L-Type abutments.
- Longitudinal joints shall be placed on lane lines and shall be constructed and sealed in accordance with **Standard Specification Section 5-05.3(8)**. Joints may be either a sawcut crack control joint or a construction joint. Sawcut joints shall terminate 1' - 0" before reaching edge of slab and must be sawcut as soon as possible after placement of concrete.
 - (A) Approach slabs less than 40' (ft) wide -- no joint is required.
 - (B) Approach slabs wider than 40' (ft) -- one or more joints are required to divide the slab into approximately 24' (ft) wide sections.
- The minimum lap splice of #5 is 2' - 0". ▽#5 is 2' - 6". ▽#6 is 3' - 0". And #8 is 3' - 3". All lap splices shall be staggered so that no more than 50% of rebar is spliced at the same location. Lap splices shall be located within the middle half of the bridge approach slab. Optional splices are allowed for AP4 ▽#6.

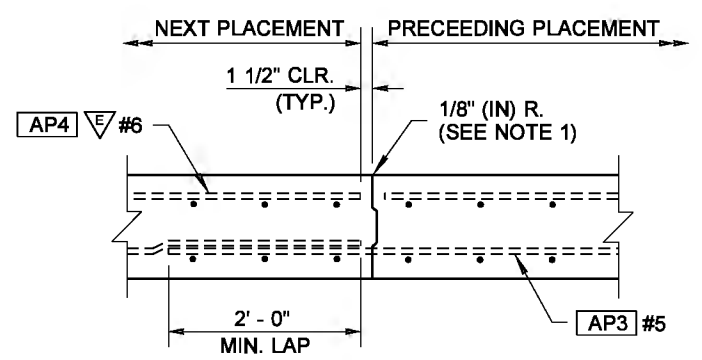
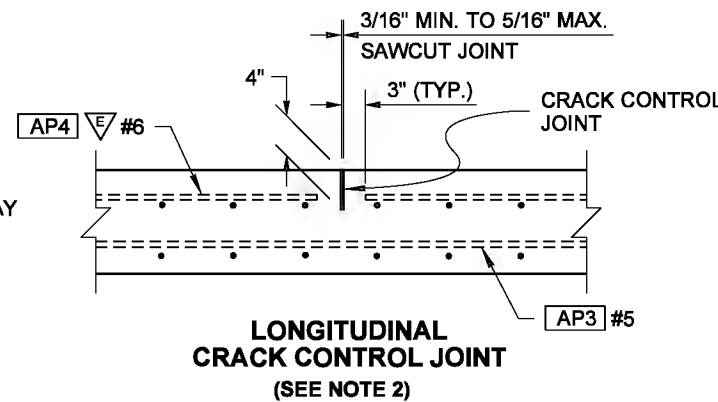
SEE STANDARD PLAN A-40.20 (DETAIL 3) FOR JOINT DETAILS



INSERT DOWELS PARALLEL TO CENTER LINE ALONG TRANSVERSE CONSTRUCTION JOINT

DOWEL BAR DETAIL FOR CEMENT CONCRETE PAVEMENT

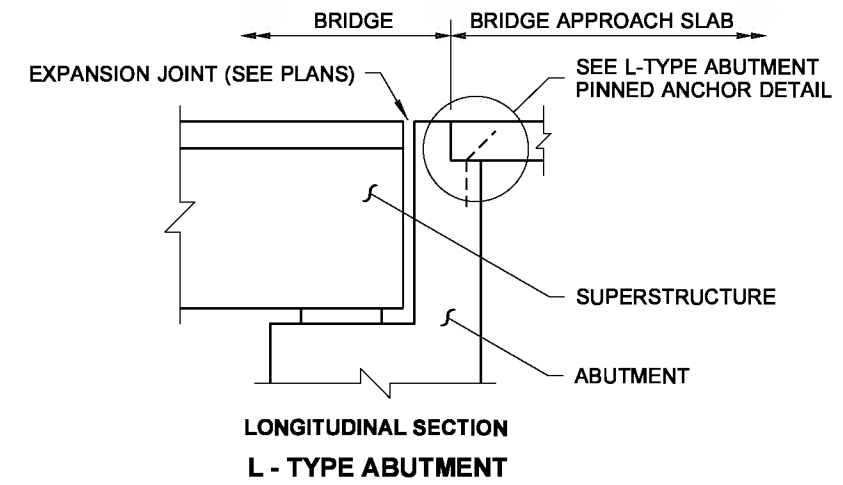
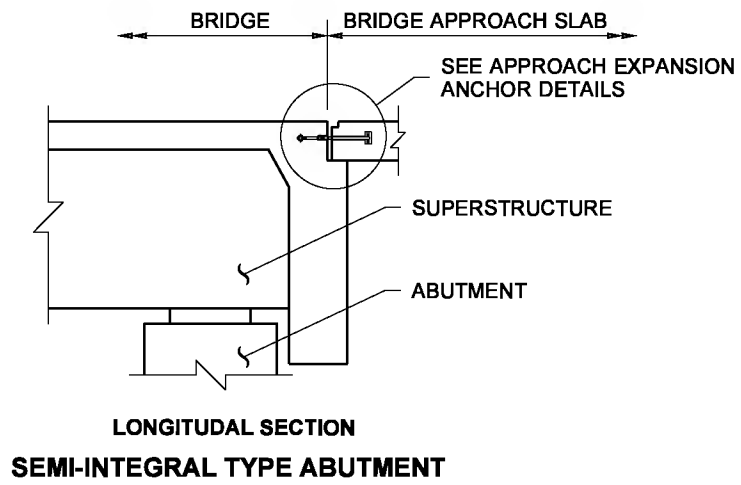
FOR LOCAL AGENCY USE ONLY



BRIDGE APPROACH SLAB
STANDARD PLAN A-40.50-02

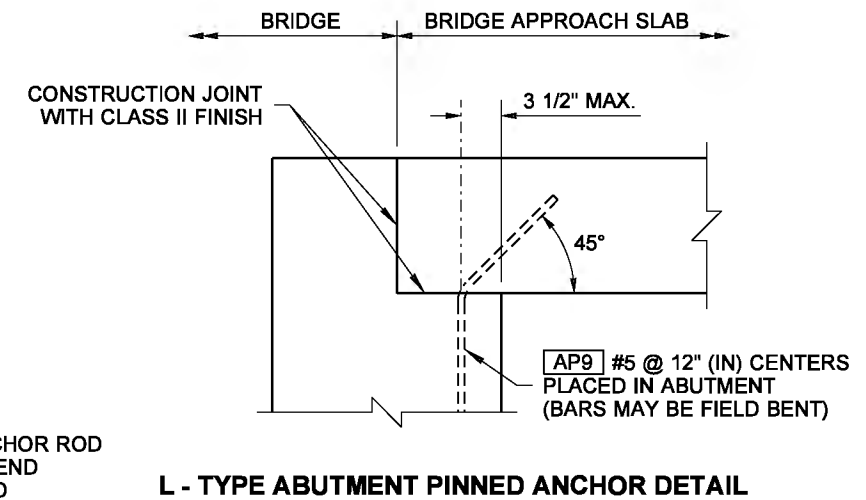
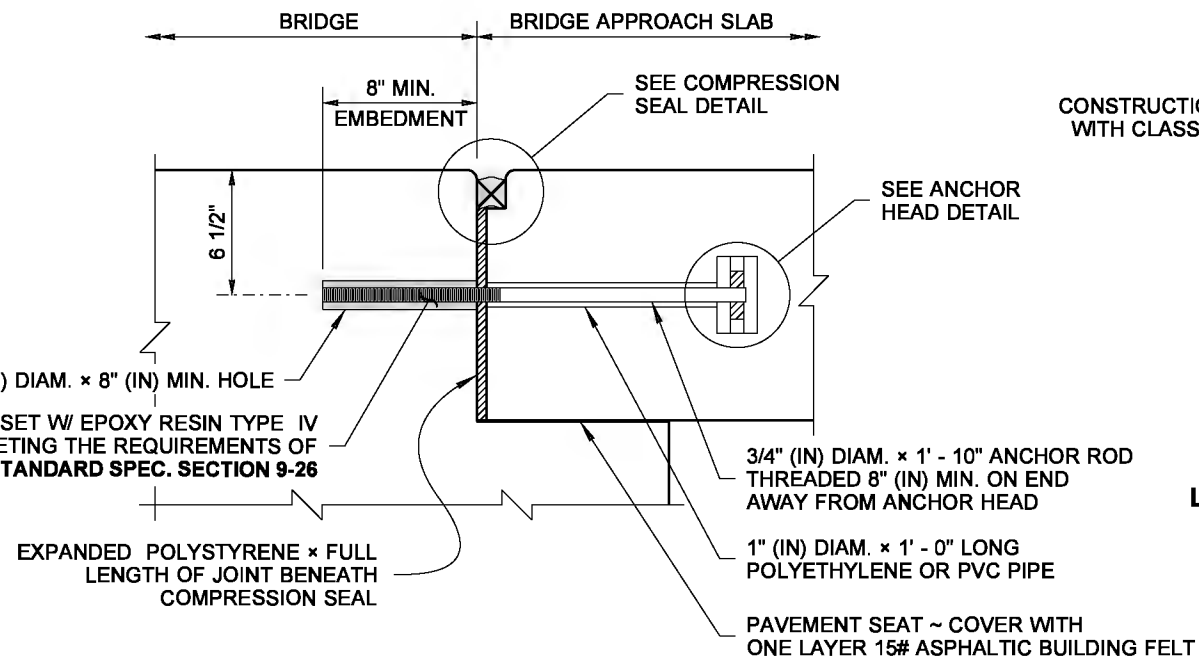
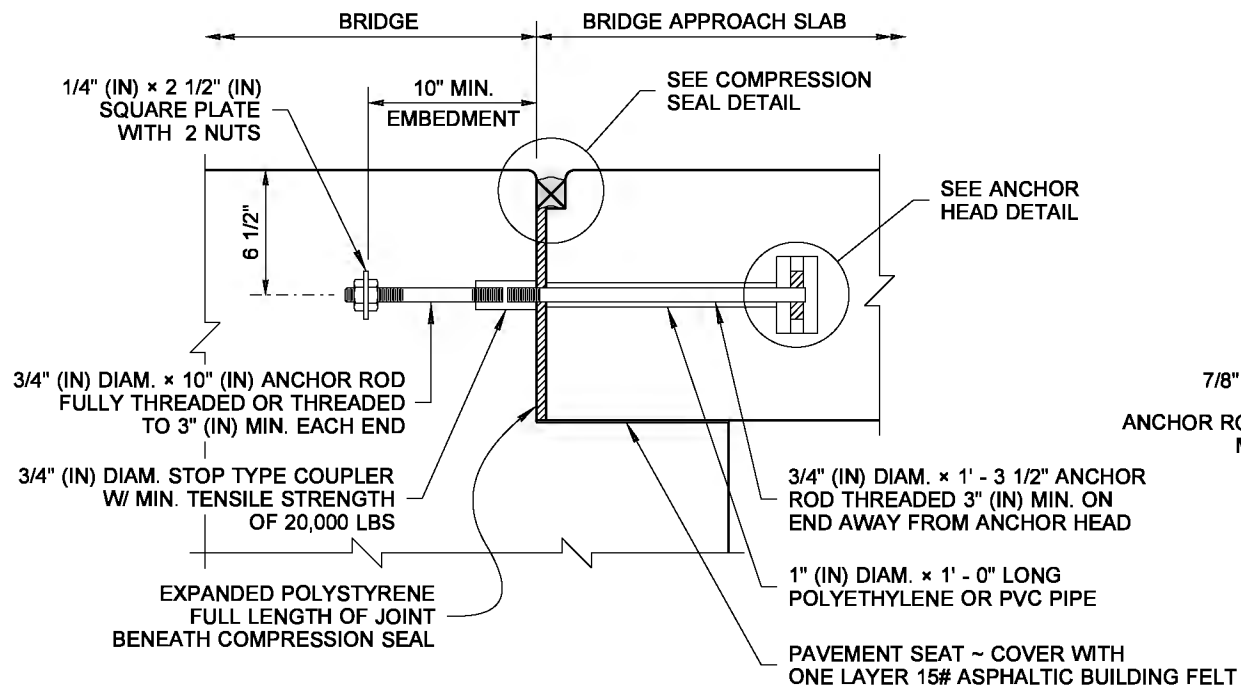
SHEET 1 OF 2 SHEETS
APPROVED FOR PUBLICATION

DRAWN BY: COLBY FLETCHER



NOTE

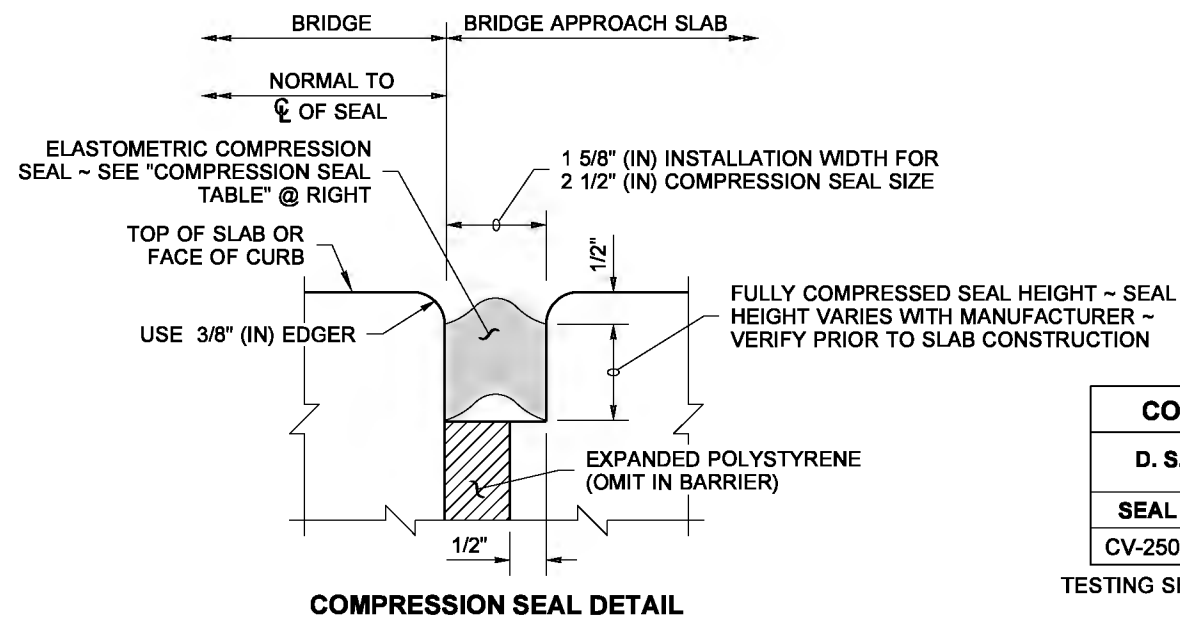
THE METAL COMPONENTS OF THE APPROACH EXPANSION ANCHOR SHALL EITHER BE PAINTED WITH ONE COAT OF INORGANIC ZINC PAINT CONFORMING TO STANDARD SPECIFICATION SECTION 9-08.1(2)F OR BE GALVANIZED IN ACCORDANCE WITH AASHTO M 232.



FOR LOCAL AGENCY USE ONLY

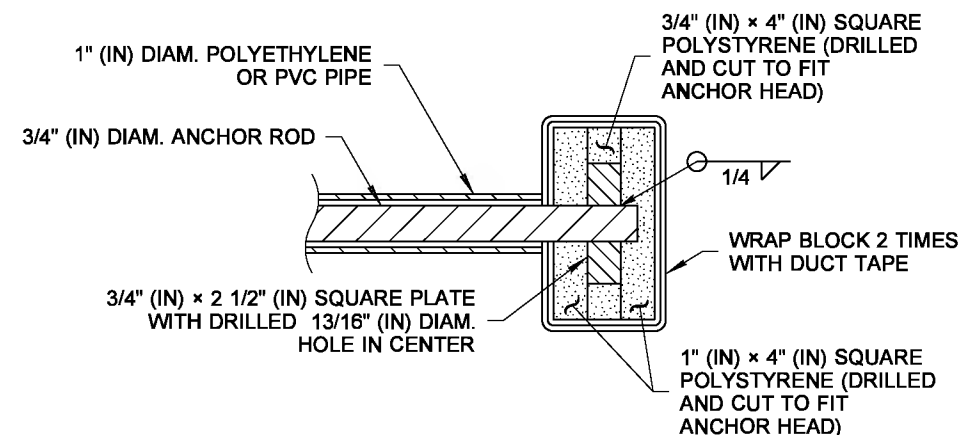
**APPROACH EXPANSION ANCHOR ~ METHOD A
SEMI-INTEGRAL TYPE ONLY**

**APPROACH EXPANSION ANCHOR ~ METHOD B
SEMI-INTEGRAL TYPE ONLY**



COMPRESSION SEAL TABLE			
D. S. BROWN		WATSON BOWMAN ACME	
SEAL	WIDTH	SEAL	WIDTH
CV-2502	2 1/2	WA-250	2 1/2

TESTING SHALL BE PER ASTM D2628 PRIOR TO USE



ANCHOR HEAD DETAIL



**BRIDGE APPROACH SLAB
STANDARD PLAN A-40.50-02**

SHEET 2 OF 2 SHEETS

APPROVED FOR PUBLICATION

STATE DESIGN ENGINEER
Washington State Department of Transportation