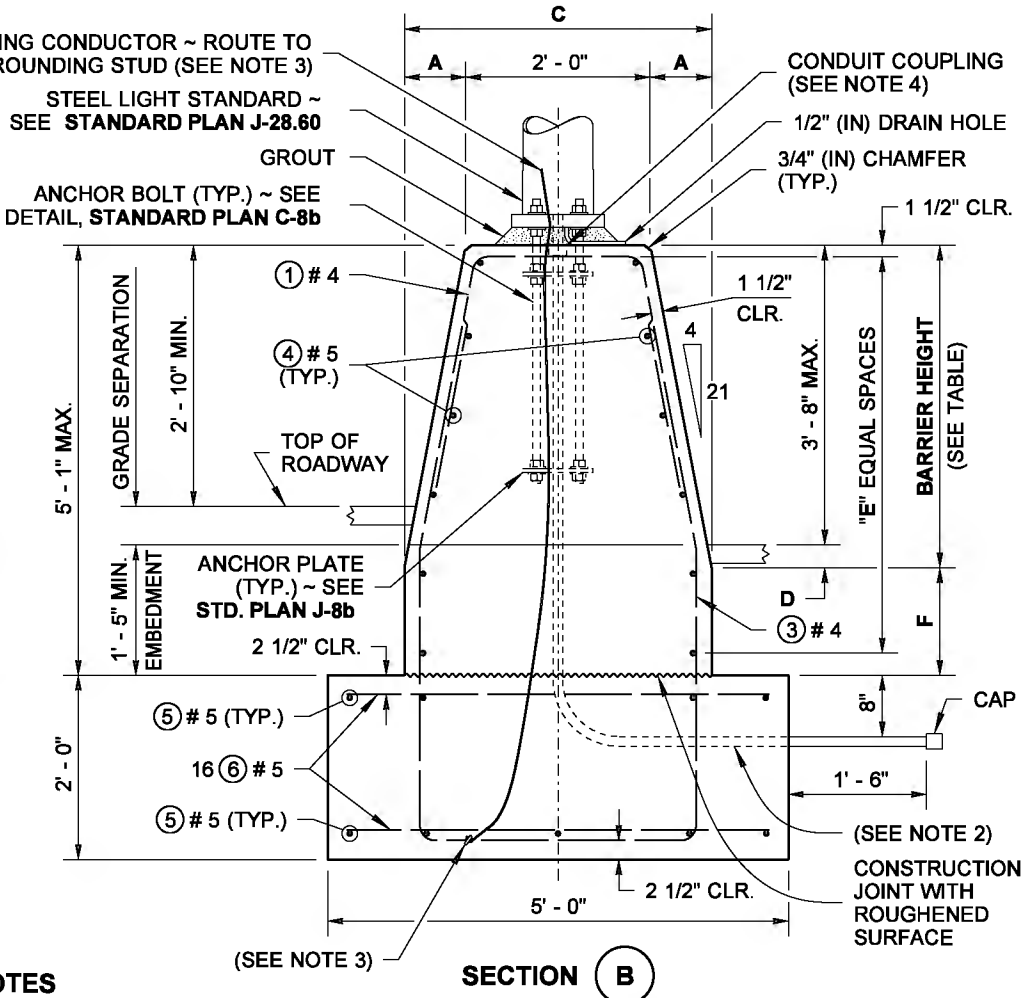
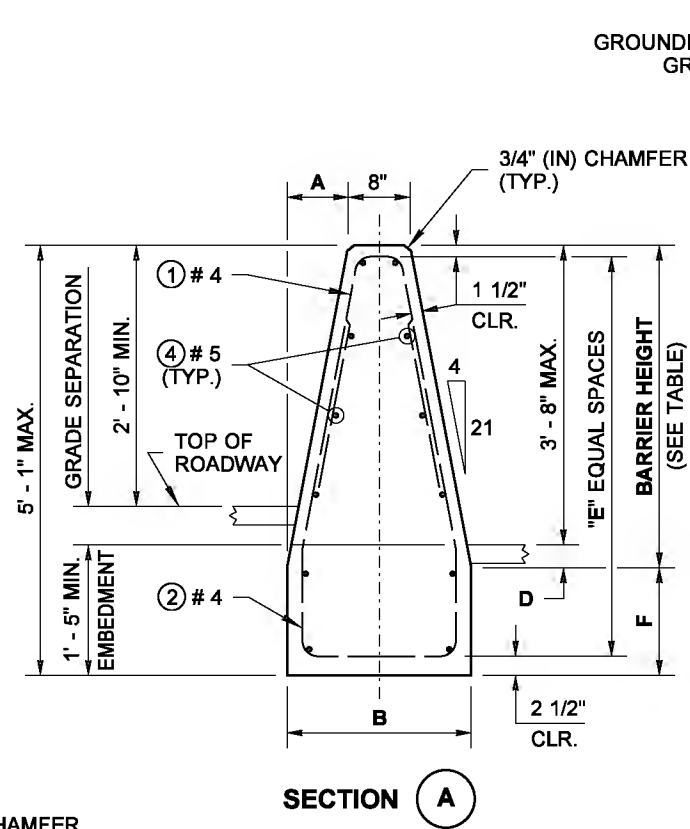
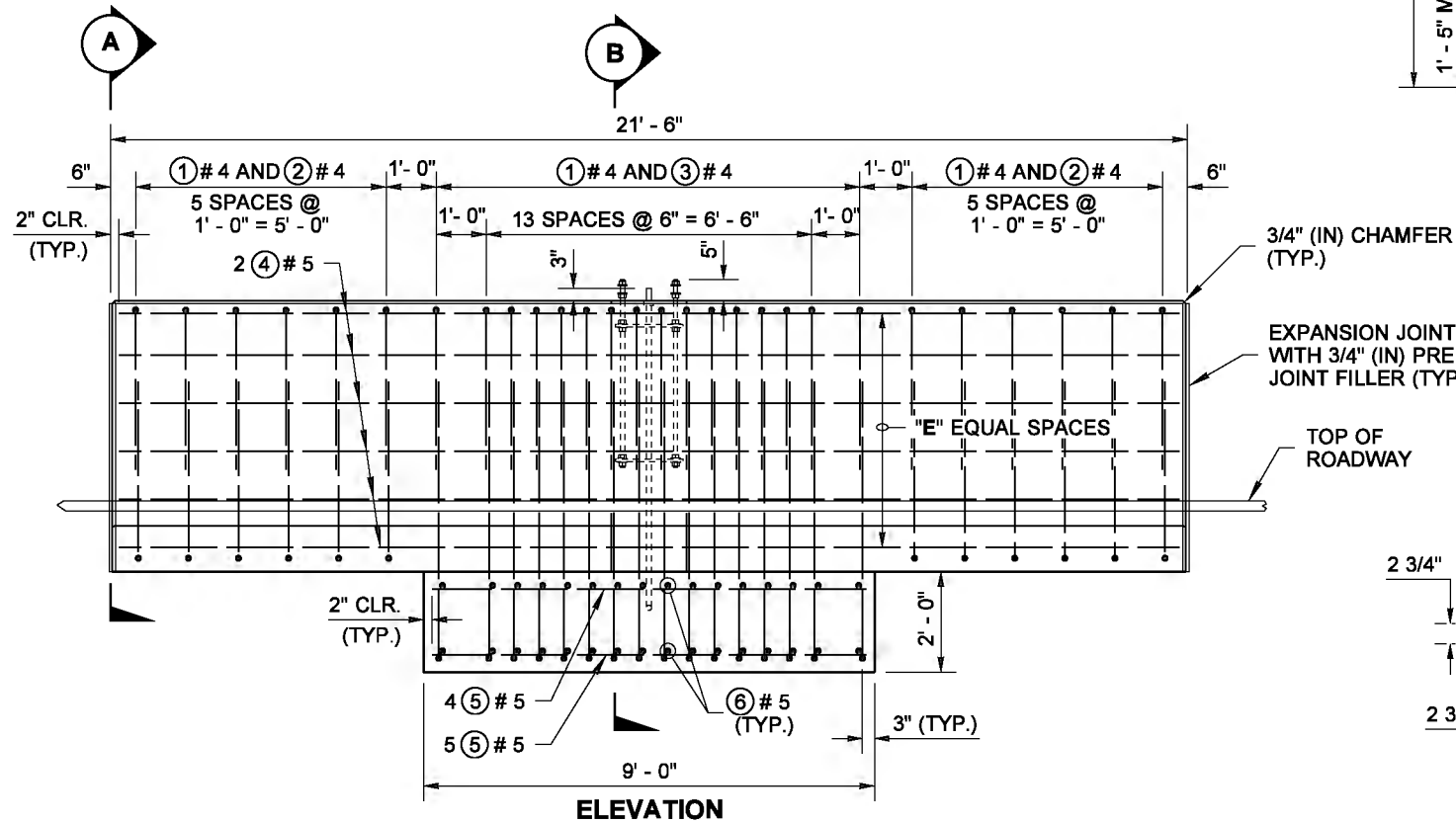
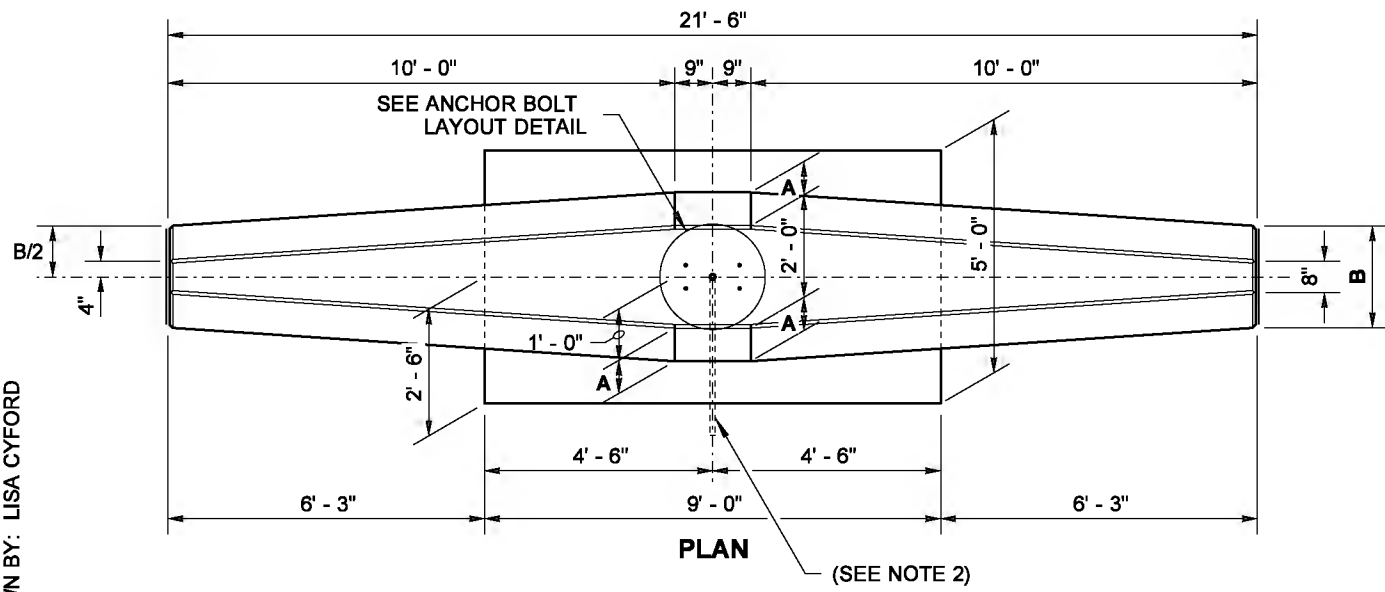
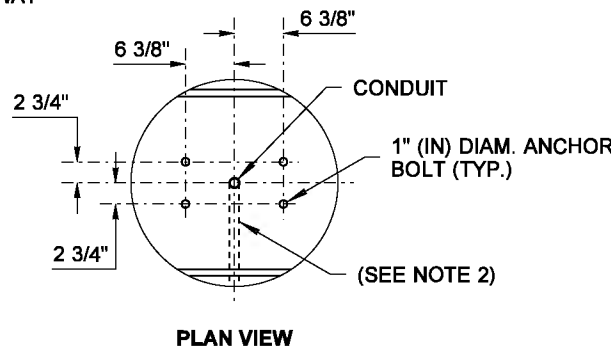


DRAWN BY: LISA CYFORD

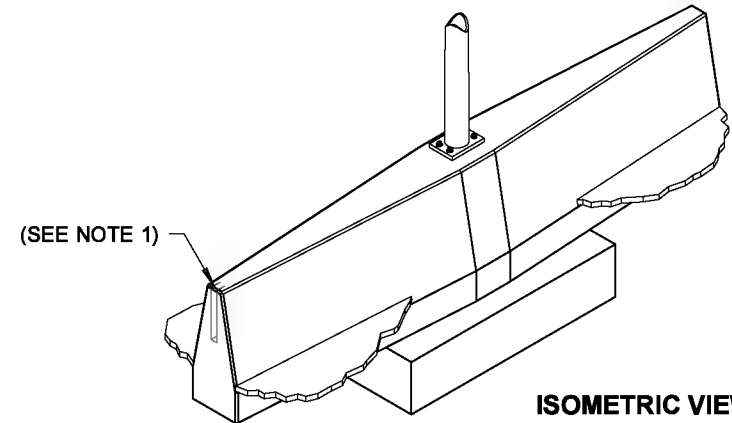


NOTES

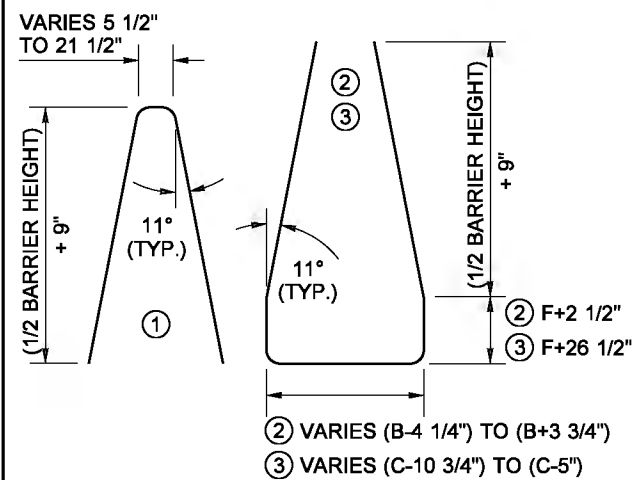
- When connecting between cast-in-place and precast Single-Slope Barrier, provide a Connection Blockout and Rebar Grid as shown on Standard Plan C-70.10.
- See the Contract Plans for conduit placement.
- Grounding Conductor shall be non-insulated #4 AWG stranded copper; provide 3' - 0" min. slack. Clamp steel reinforcing bar with connector suitable for use embedded in concrete.
- Install Conduit Coupling flush with top of foundation. Do not glue PVC stubout.
- This plan shall be used for 40' (ft) and 50' (ft) Light Standards with 16' (ft) max. length double mast arms.
- Concrete shall be Class 4000.
- This spread footing is designed for an allowable soil bearing pressure of 2500 psf or better.



ANCHOR BOLT LAYOUT DETAIL

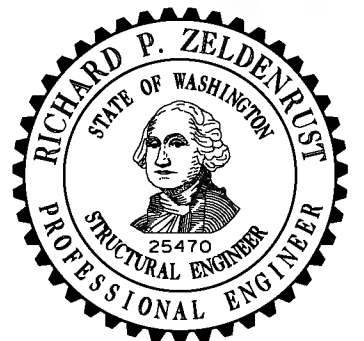


ALL DIMENSIONS ARE OUT TO OUT
ALL BENDS ARE 2" (IN) RADIUS



BAR LIST			
MARK NO.	LOCATION	SIZE	QUANTITY
1	BARRIER ~ TOP VERTICAL	# 4	28
2	BARRIER ~ BOTTOM VERTICAL	# 4	12
3	FND. & BARRIER ~ VERTICAL	# 4	16
4	BARRIER ~ HORIZONTAL	# 5	"Q"
5	FOUNDATION	# 5	9
6	FOUNDATION	# 5	32

TABLE								
GRADE SEPARATION	BARRIER HEIGHT	A	B	C	D	E	F	Q
0 TO 5"	3' - 6"	8"	2' - 0"	3' - 4"	3" MIN.	5	1' - 2"	12
UP TO 7"	4' - 0"	9 1/8"	2' - 2 1/4"	3' - 6 1/4"	7" MIN.	5	10"	12
UP TO 10"	4' - 6"	10 1/4"	2' - 4 1/2"	3' - 8 1/2"	10" MIN.	6	7"	14



SINGLE-SLOPE CONCRETE BARRIER LIGHT STANDARD FOUNDATION
STANDARD PLAN C-85.14-01

SHEET 1 OF 1 SHEET

APPROVED FOR PUBLICATION