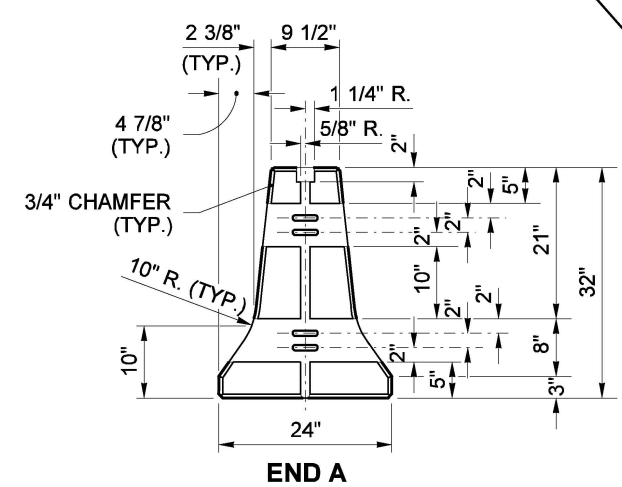


TYPICAL SLOT DETAIL - END A

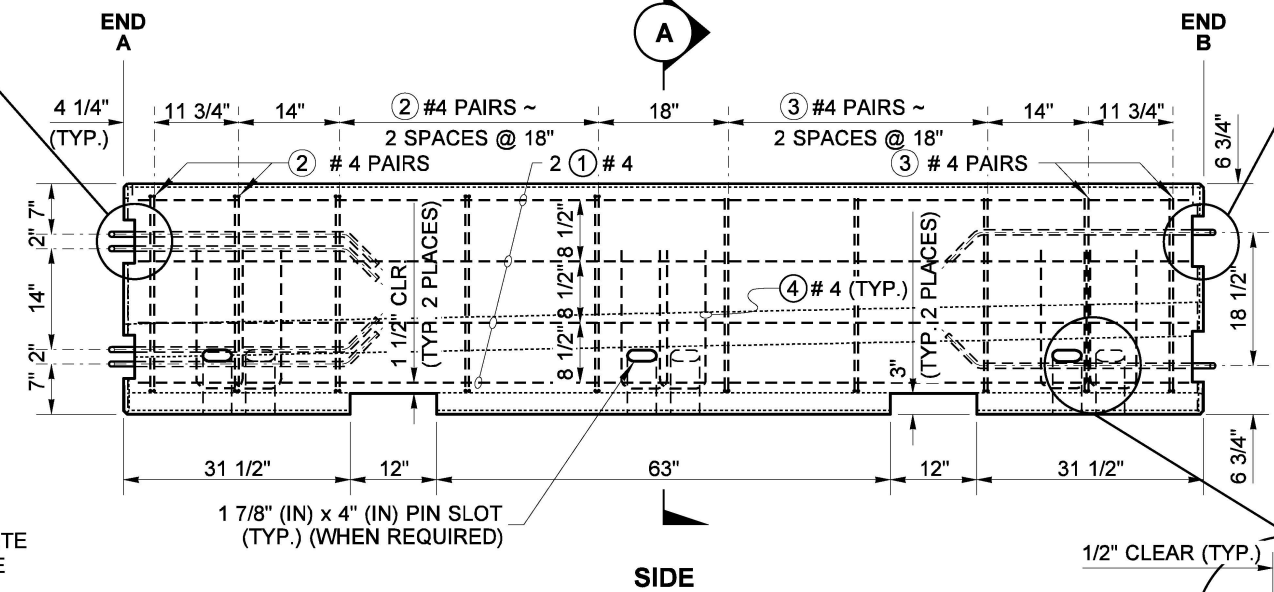
TYPICAL SLOT DETAIL - END B
(MIRROR IMAGE FOR LOWER SLOT)

NOTES

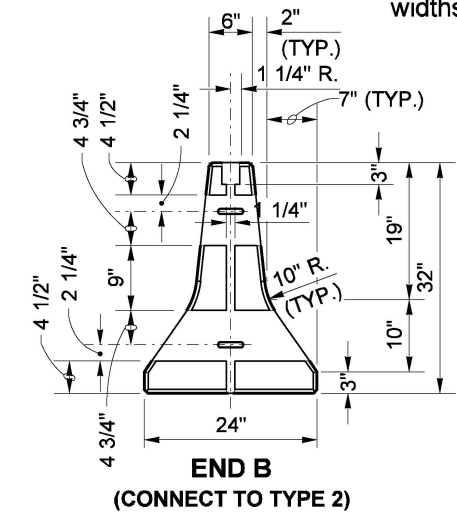
1. Concrete for Type F transition to Type 2 barrier shall be Class 5000.
2. Remove slack between barrier segments after inserting the connecting pin.
3. See **Standard Plan C-60.10** and **C-60.70** for Barrier Anchoring Details (when being anchored).
4. Provide 2" minimum concrete cover over reinforcing steel, except for areas noted on plan.
5. Connecting Pin head designs vary among different manufacturers. Pin designs that are shaped differently than those shown in the detail are acceptable, if the bearing surface is within the minimum and maximum widths specified.



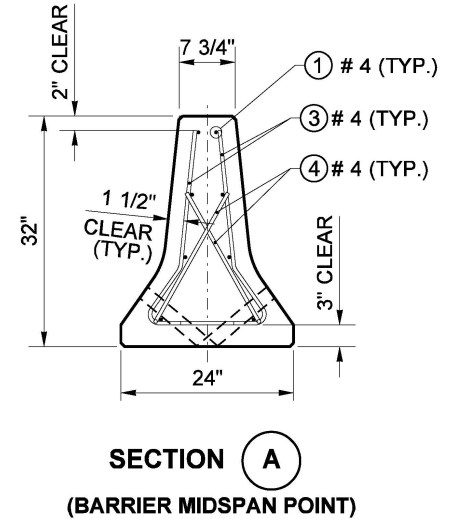
END A



SIDE

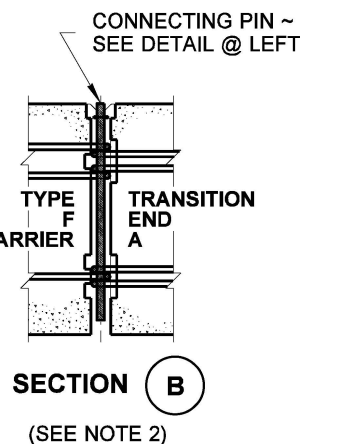
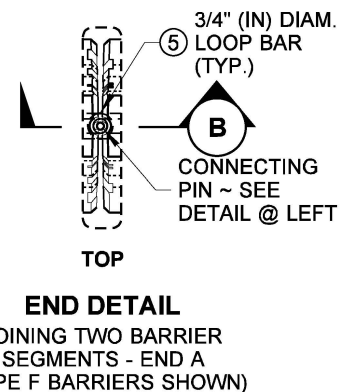
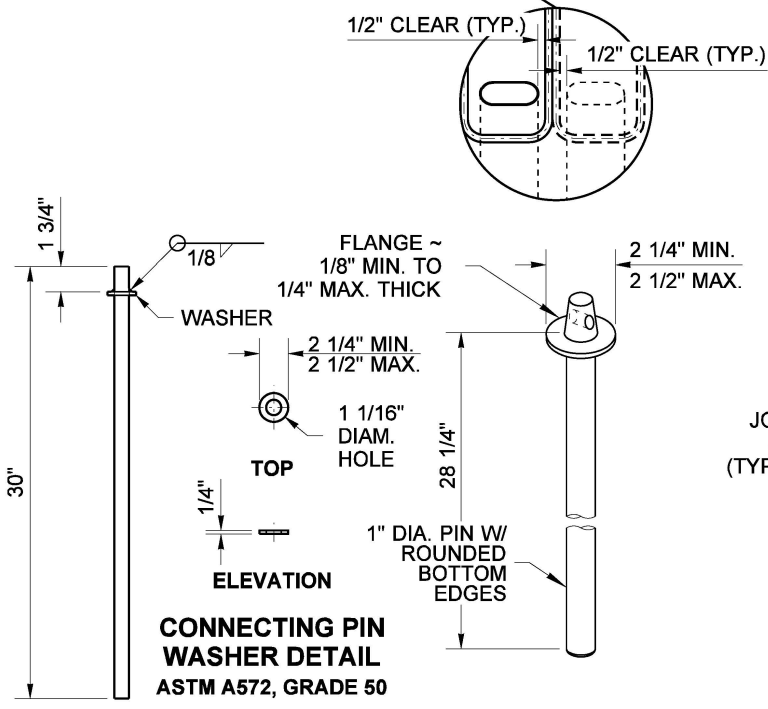
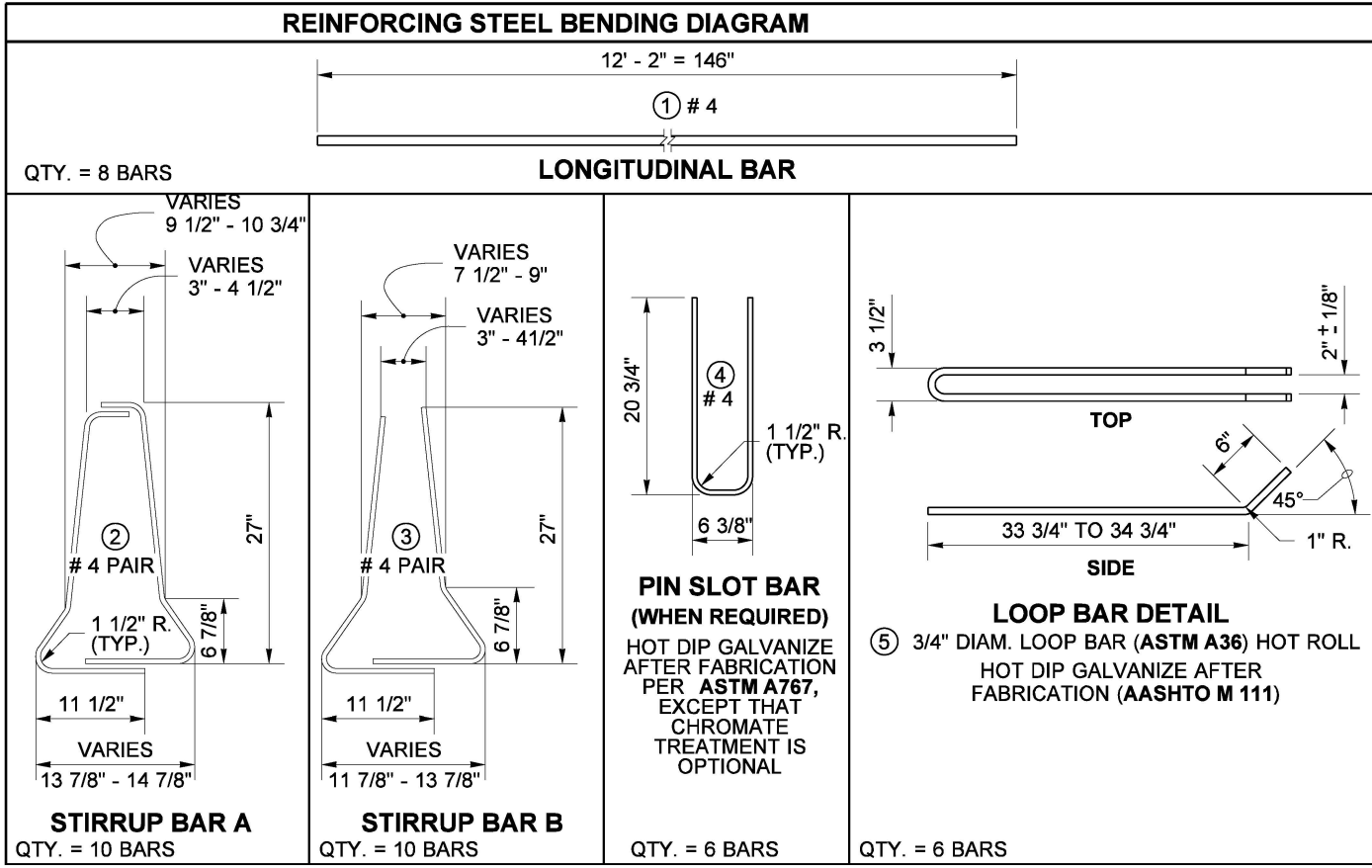


END B
(CONNECT TO TYPE 2)



SECTION A
(BARRIER MIDSPAN POINT)

NOTE: (CONNECT TO TYPE F)
STEEL WELDED WIRE REINFORCEMENT DEFORMED FOR CONCRETE MAY BE SUBSTITUTED FOR REINFORCING STEEL IN ACCORDANCE WITH **STANDARD SPECIFICATION, SECTION 6-10.3**



Jul 18, 2024

TYPE F TRANSITION TO TYPE 2 BARRIER PLAN
STANDARD PLAN C-60.30-02

SHEET 1 OF 1 SHEET

APPROVED FOR PUBLICATION

Mark A. Davis Jul 21, 2024

STATE DESIGN ENGINEER

