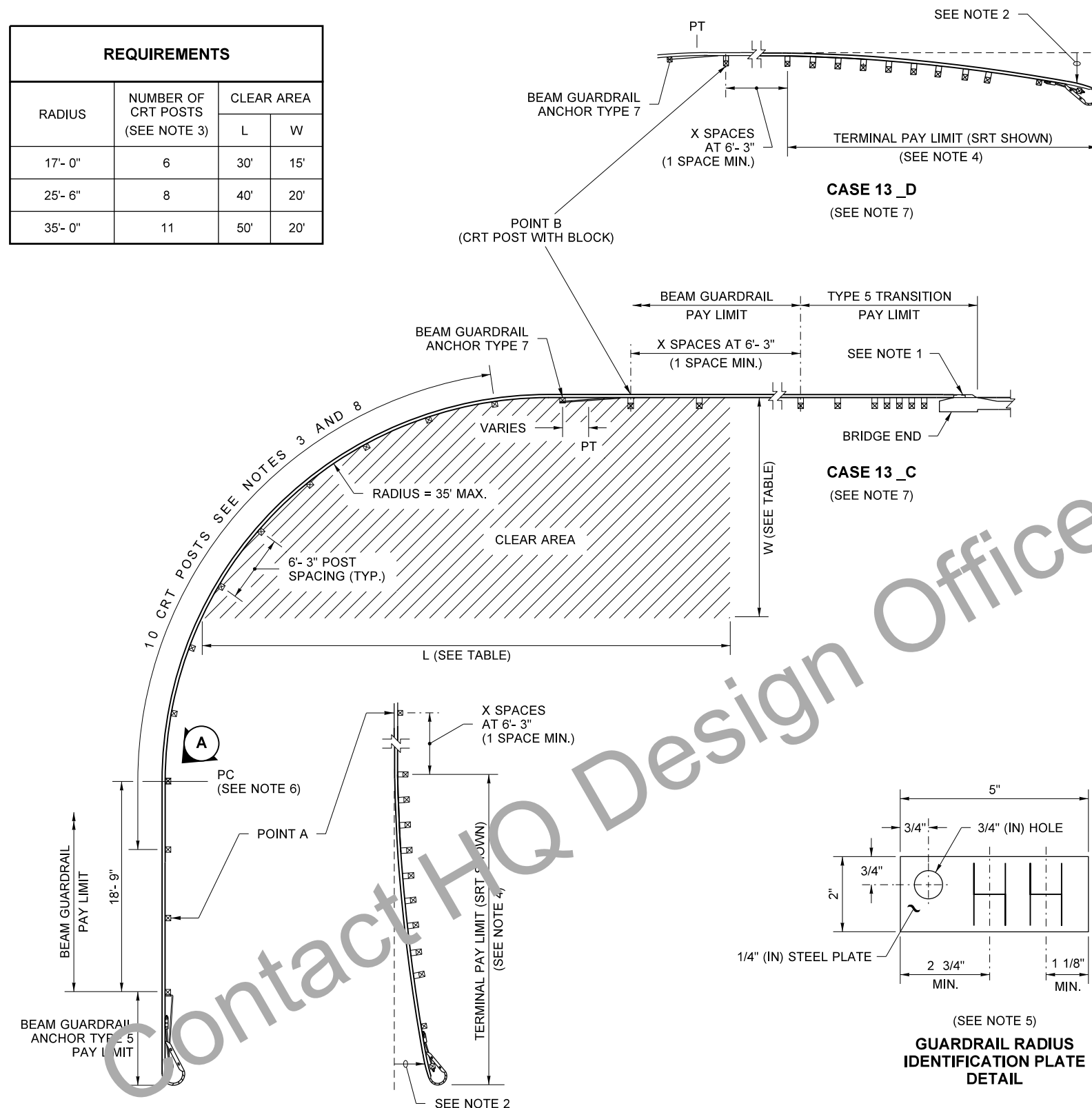


REQUIREMENTS			
RADIUS	NUMBER OF CRT POSTS (SEE NOTE 3)	CLEAR AREA	
		L	W
17'- 0"	6	30'	15'
25'- 6"	8	40'	20'
35'- 0"	11	50'	20'



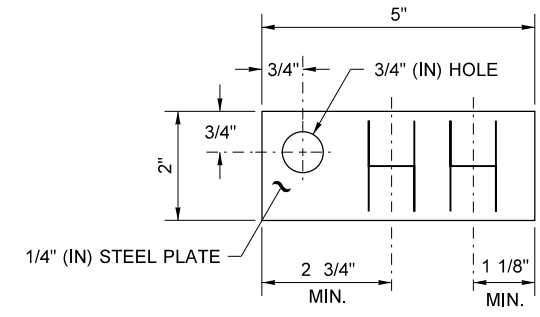
CASE 13_D
(SEE NOTE 7)

CASE 13_C
(SEE NOTE 7)

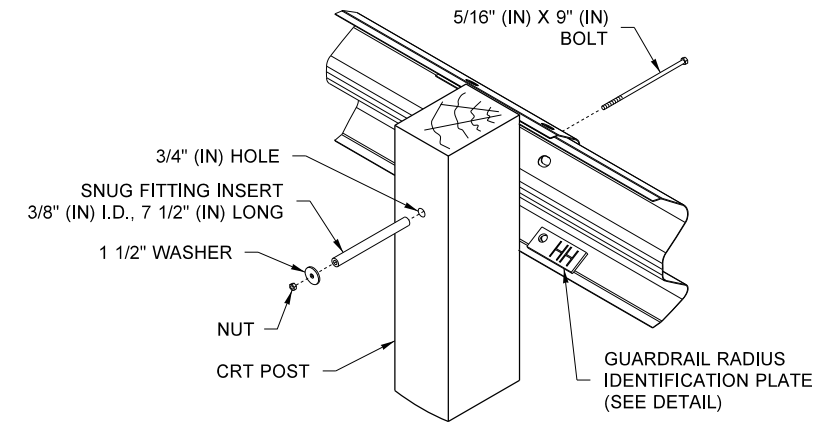
CASE 13 A_
(SEE NOTE 7)

CASE 13 B_
(SEE NOTE 7)

**TYPE 1 GUARDRAIL PLACEMENT WEAK POST INTERSECTION DESIGN
(35' MAX RADIUS) (CASES 13AC, 13AD, 13BC & 13BD)**



(SEE NOTE 5)
GUARDRAIL RADIUS IDENTIFICATION PLATE DETAIL



(SEE NOTES 3, 6 & 8)
VIEW A

NOTES

- SEE CONTRACT PLANS FOR GUARDRAIL CONNECTION TO BRIDGE RAIL AND CONCRETE BARRIER.
- THE SLOPE FROM THE EDGE OF THE SHOULDER INTO THE FACE OF THE GUARDRAIL SHOULD NOT BE STEEPER THAN 10H : 1V.
- FEWER CRT POSTS ARE REQUIRED FOR SMALLER RADII; INCLUDE CRT POST AT POINT B. ATTACH GUARDRAIL TO POST WITH A 5/16" X 9" (IN) LONG BOLT, A 3/8" (IN) I.D. X 7 1/2" (IN) SNUG FITTING INSERT, AND A 1 1/2" (IN) WASHER WITH NUT ON BACK OF POST.
- FOR TERMINAL TYPE "AN" DETAILS, SEE CONTRACT AND APPLICABLE PLANS.
- RADIUS DIMENSIONS SHALL BE ETCHED INTO PLATE REPLACING THE LETTERS "HH", SHOWN ON THE GUARDRAIL RADIUS IDENTIFICATION PLATE DETAIL. DIGITS SHALL BE 1 1/2" (IN) MINIMUM HEIGHT AND 3/4" (IN) MAXIMUM WIDTH. PLATE SHALL BE GALVANIZED AFTER ETCHING.
- THE GUARDRAIL RADIUS IDENTIFICATION PLATE SHALL BE MOUNTED ON THE BACK SIDE OF THE RAIL ELEMENT USING THE LOWEST SPLICE BOLT NEAREST THE PC OF THE GUARDRAIL RADIUS (SEE VIEW A).
- THE FIRST LETTER OF THE CASE DESIGNATION INDICATES THE END TREATMENT ON THE SIDE ROAD. THE SECOND LETTER INDICATES THE END TREATMENT ON THE MAIN ROAD. FOR EXAMPLE, A TYPE 5 ANCHOR ON THE SIDE ROAD WITH A BRIDGE CONNECTION ON THE MAIN ROAD WOULD BE CASE 13 AC, THE COMBINATION SHOWN.
- FOR CRT POST DETAILS, SEE STANDARD PLAN C1b.

FILE NAME	S:\Design R P& S\4-Standards\2-Plan Sheet Library\02-PSL Work in Progress\C series conversion\TB-c2g\TB-C2g.dgn			FED.AID PROJ.NO.		<p>Washington State Department of Transportation</p>	PLAN REF NO	TB-C2g	
TIME	7:47:16 AM			REGION NO.	10		STATE	WASH	
DATE	8/2/2018			JOB NUMBER		CONTRACT NO.		SHEET	
PLOTTED BY	liddelf			LOCATION NO.		DATE		OF	
DESIGNED BY						P.E. STAMP BOX		SHEETS	
ENTERED BY									
CHECKED BY									
PROJ. ENGR.									
REGIONAL ADM.									
	REVISION		DATE	BY					