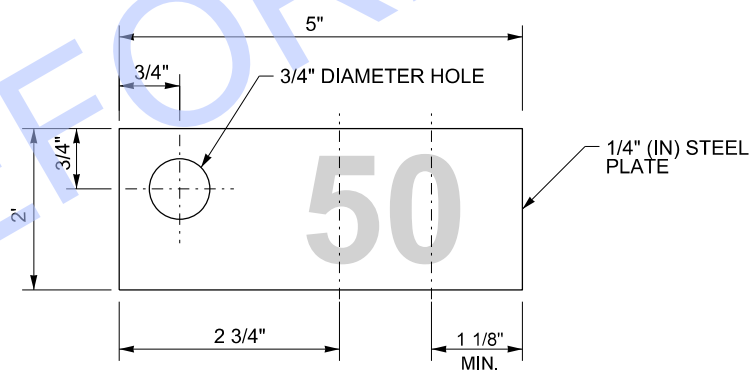
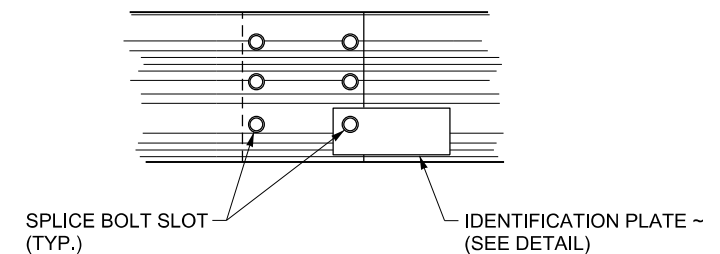


**NOTES**

1. See Contract for transition and connection type.
2. For additional installation requirements for Non-Flared Terminal placement, see **Standard Plan C-22.40**, or **C-22.45**.
3. Guardrail installation shall be Beam Guardrail Type 31 with standard post and block. See **Standard Plan C-20.10** for additional details.
4. The first letter of case designation indicates the end treatment on the side road. The second letter indicates the end treatment on the main road. For instance, a terminal on a side road and a bridge connection on the main road would be **Case 22BC-31**.
5. The radius dimension shall be etched into the plate as shown in the example on the Identification Plate Detail. Numerals shall be 1 1/2" (in) high minimum, and 3/4" (in) wide maximum. Plate shall be galvanized after etching and the letter shall remain permanently legible.
6. The guardrail Identification Plate shall be mounted at the lower splice bolt on the back side of the rail element at the PC of the guardrail radius.



**IDENTIFICATION PLATE  
DETAIL  
(SEE NOTE 6)**



**IDENTIFICATION PLATE MOUNTING  
DETAIL  
(SEE NOTE 6)**

FILE NAME S:\Design R P & S\4-Standards\2-Plan Sheet Library\04-PSL Work In Progress\C plans to be convert to TB 2024\TB-127.dgn				FED.AID PROJ.NO.		<p>Washington State Department of Transportation</p>	<p><b>GUARDRAIL PLACEMENT STRONG POST ~ TYPE 31 INTERSECTION DESIGN</b></p>	PLAN REF NO
TIME 1:24:13 PM	DATE 9/18/2024	REGION NO. 10	STATE WASH	LOCATION NO.	SHEET 1 OF 1 SHEETS			
PLOTTED BY BerensB	DESIGNED BY	JOB NUMBER	CONTRACT NO.	DATE				
ENTERED BY	CHECKED BY	PROJ. ENGR.	REGIONAL ADM.	REVISION	DATE			BY