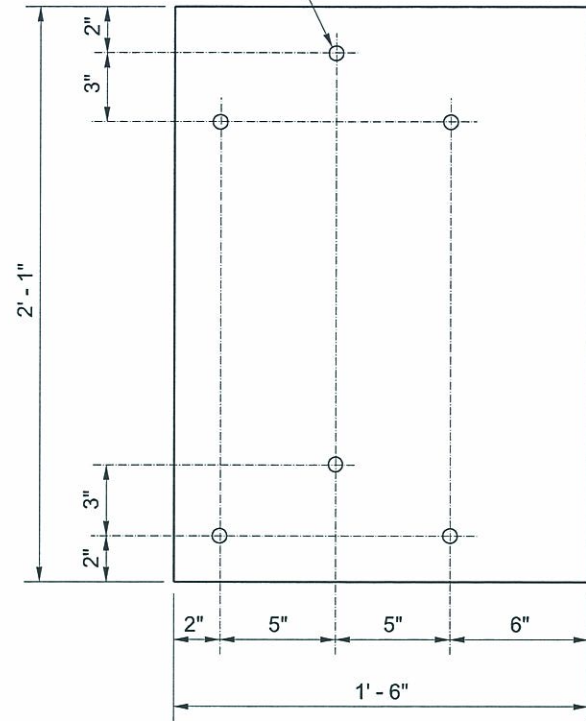


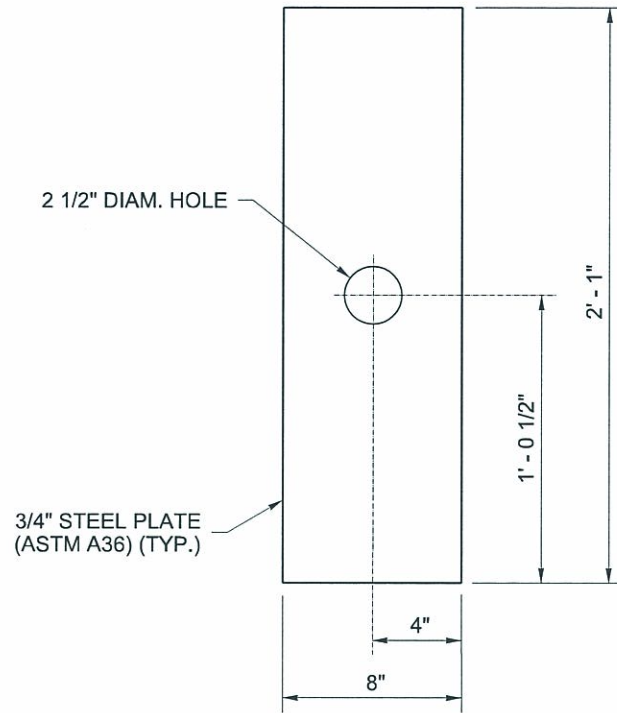


7/8" DIAM. HOLE FOR 5/8" DIAM. RESIN BONDED ANCHOR (TYP.)



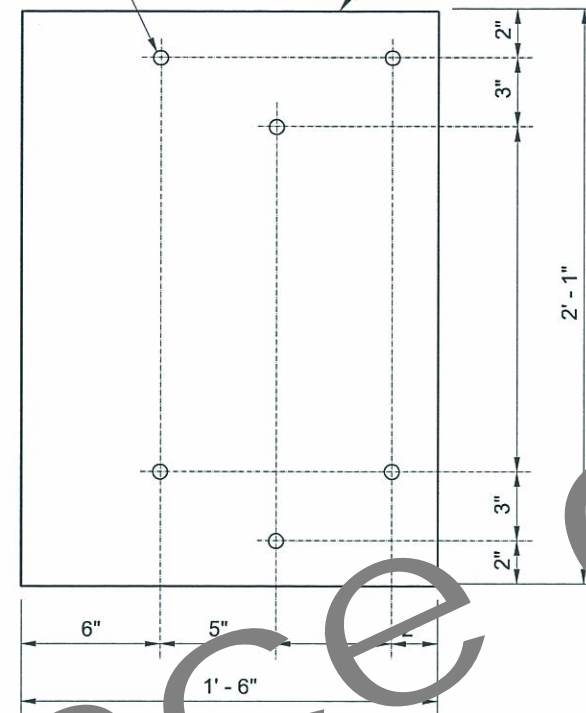
LEFT PANEL

7/8" DIAM. HOLE FOR 5/8" DIAM. RESIN BONDED ANCHOR (TYP.)

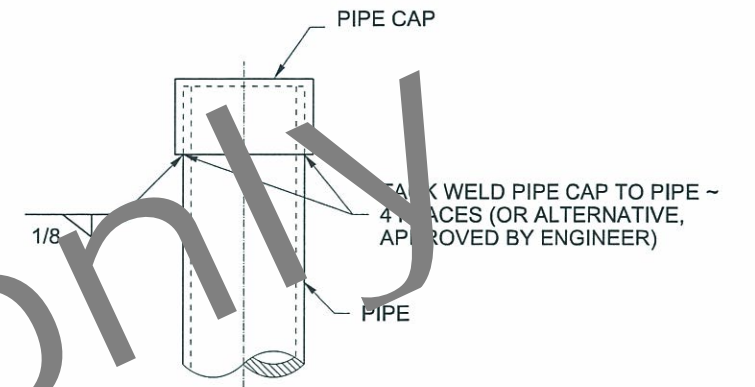


TOP PANEL

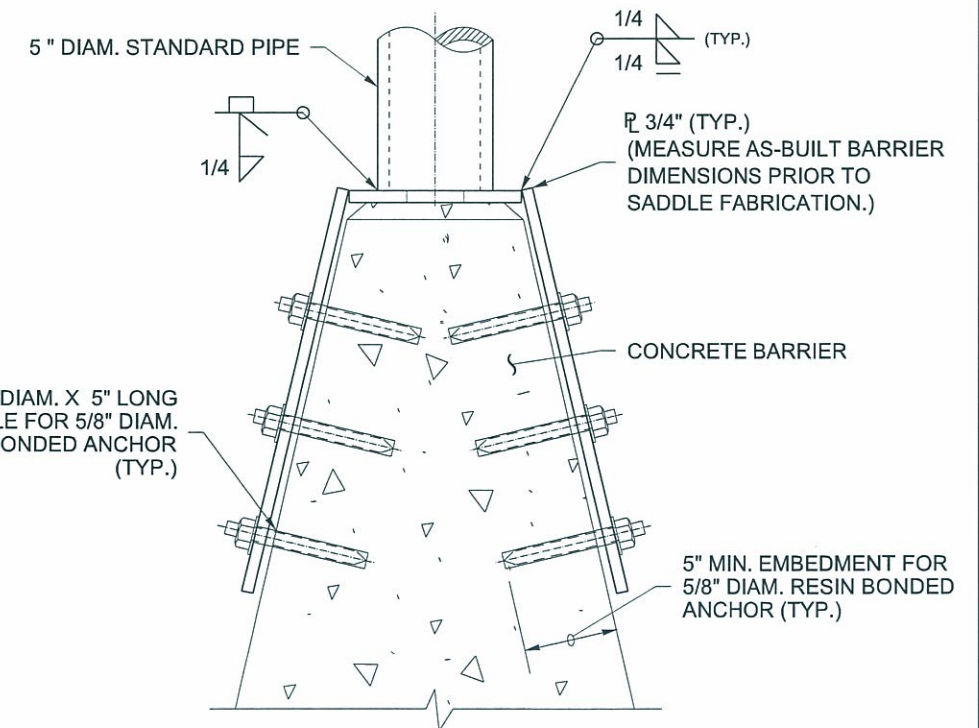
3/4" STEEL PLATE (ASTM A36) (TYP.)



RIGHT PANEL



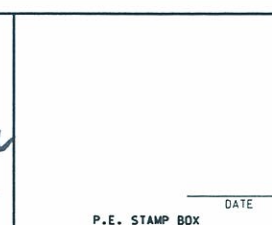
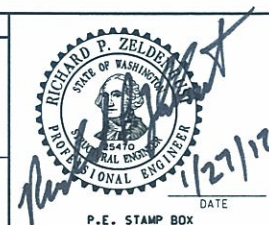
CAP DETAIL



TYPICAL SECTION

For Reference only

FILE NAME	S:\Design R P& S\4-Standards\2-Plan Sheet Library\05-Signing Details (SD)\SD-4.dgn		
TIME	1:27:53 PM		
DATE	1/27/2012		
PLOTTED BY	CyfordL		
DESIGNED BY			
ENTERED BY			
CHECKED BY			
PROJ. ENGR.			
REGIONAL ADM.	REVISION	DATE	BY
REGION	STATE	FED.AID PROJ.NO.	
10	WASH		
		JOB NUMBER	
		CONTRACT NO.	LOCATION NO.



**BARRIER - MOUNTED SIGN POST**

PLOT2  
SD-4  
SHEET 2 OF 2 SHEETS