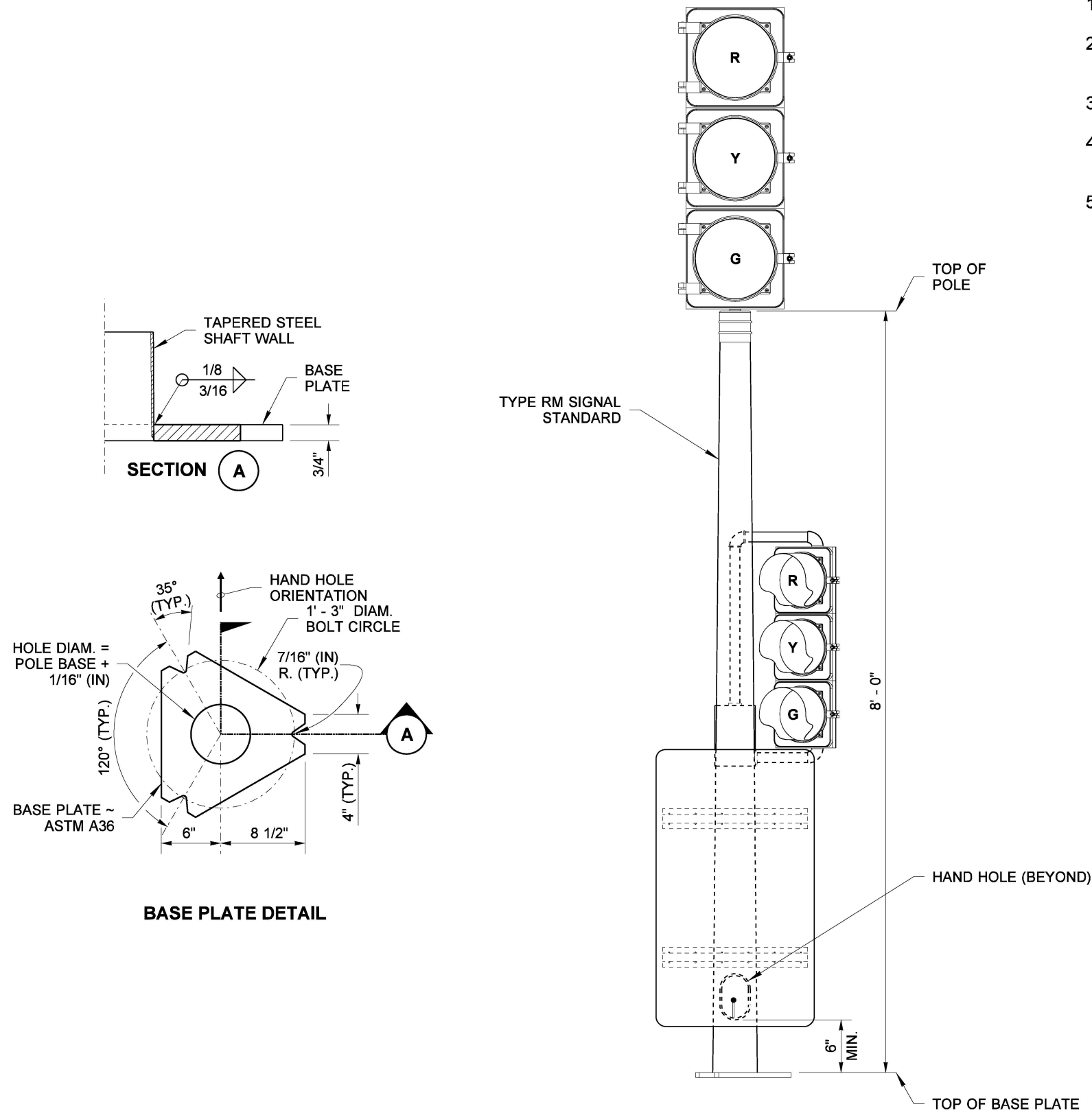
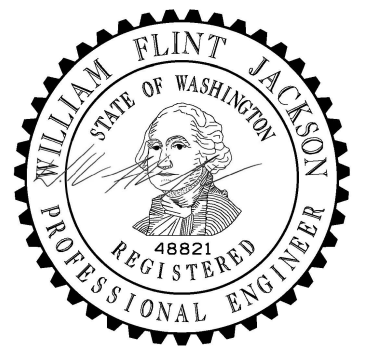
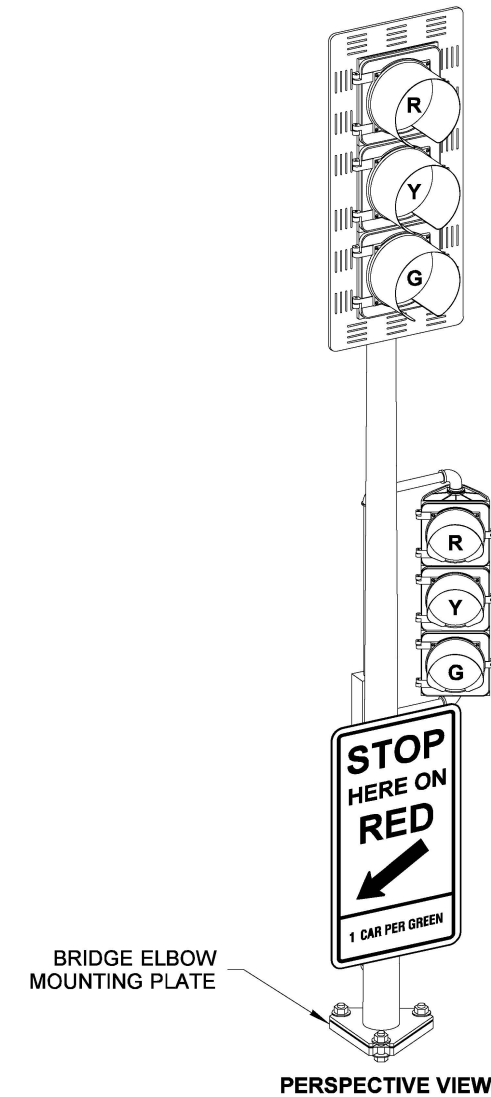


NOTES

1. See **Standard Plan J-22.17** for Installation Details.
2. Steel shaft shall be tapered either round or dodecagon (12-sided), 11-gage, 4 1/2" (in) O.D. at slipfitter. Taper shall be 0.14" (in) per foot.
3. All poles shall be hot-dip galvanized per **AASHTO M111**.
4. Welding of structures shall be in accordance with the latest edition of the **AWS D1.1 Structural Welding Code** - Steel. All butt welds shall be ground flush with base metal.
5. Type RM signal standard for bridge elbow installation only.



RAMP METER (TYPE RM) SIGNAL STANDARD



Jun 20, 2024

**RAMP METER (TYPE RM)  
SIGNAL STANDARD  
DETAILS  
STANDARD PLAN J-22.15-03**

SHEET 1 OF 1 SHEET

APPROVED FOR PUBLICATION

*Mark A. Daines* Jun 21, 2024

STATE DESIGN ENGINEER

