

LAST REVISED: 09/08/2025

STEEL SHAPE TYPES										
MANUFACTURER	ITEM NAME	BRIDGE DECK			TRAFFIC BARRIER					
		TYPE	S	T	TYPE	V	W	TYPE	X	Y
D.S. BROWN	DSB STRIP SEAL	SSCM2	1 1/4"	3 3/4"	SSA2 <4>	1 1/4"	2"	SSE2M <4>	1"	1 1/2"
WATSON BOWMAN ACME	WABO STRIP SEAL	R	1 1/4"	3 1/4"	A	1 1/4"	2"	E	1 1/2"	1 1/2"
R.J. WATSON, INC.	RJ STRIP SEAL	RJM	2 3/4"	3 1/4"	RJA	1 1/4"	2"	RJE	1 1/4"	1 1/2"

2" MOTION RANGE								
** GROUP	MANUFACTURER	ITEM NAME	OPENING "G" NORMAL TO JT.		MIN. INSTALLATION WIDTH NORMAL TO JOINT	OPENING "G" NORMAL TO JT.		
			MIN.	MAX.		@ 40° F	@ 64° F	@ 80° F
1	D.S. BROWN	A2R-400 OR E2M-SEAL <5>	1/2"	4 1/2"	2"			
2	WATSON BOWMAN ACME	WABO STRIP SEAL SE-300	0"	3"	1 1/2"			
2	R.J. WATSON, INC.	R.J. STRIP SEAL 200	0"	2"	1 1/2"			

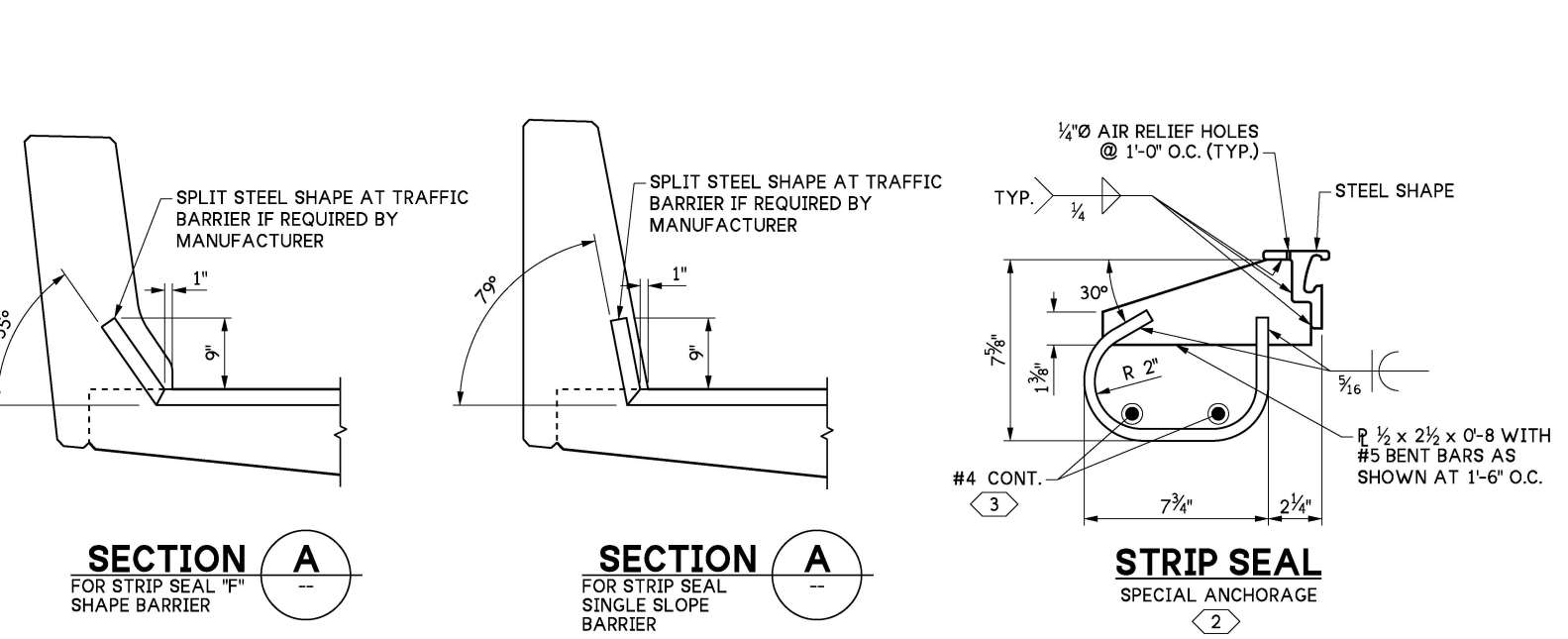
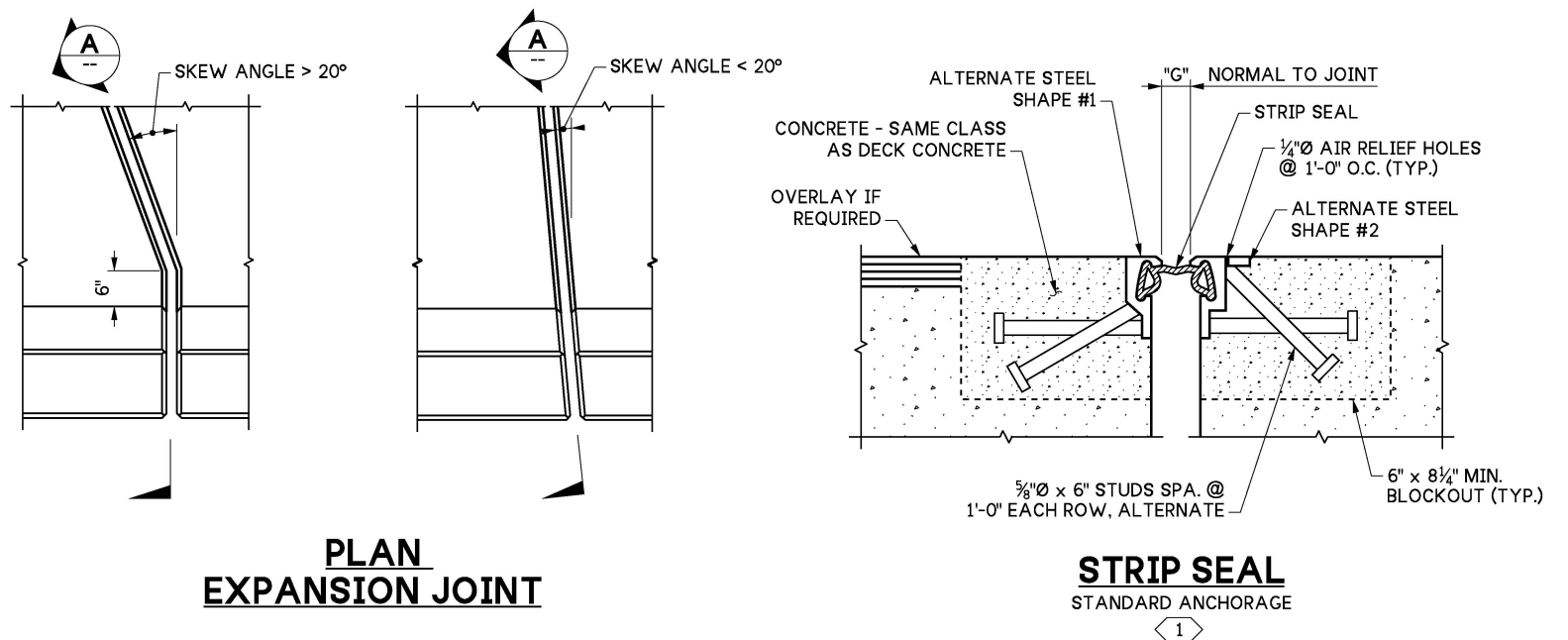
3" MOTION RANGE								
** GROUP	MANUFACTURER	ITEM NAME	OPENING "G" NORMAL TO JT.		MIN. INSTALLATION WIDTH NORMAL TO JOINT	OPENING "G" NORMAL TO JT.		
			MIN.	MAX.		@ 40° F	@ 64° F	@ 80° F
1	D.S. BROWN	A2R-400 OR E2M-SEAL <5>	1/2"	4 1/2"	2"			
2	WATSON BOWMAN ACME	WABO STRIP SEAL SE-300	0"	3"	1 1/2"			
2	R.J. WATSON, INC.	R.J. STRIP SEAL 300	0"	3"	1 1/2"			

4" MOTION RANGE								
** GROUP	MANUFACTURER	ITEM NAME	OPENING "G" NORMAL TO JT.		MIN. INSTALLATION WIDTH NORMAL TO JOINT	OPENING "G" NORMAL TO JT.		
			MIN.	MAX.		@ 40° F	@ 64° F	@ 80° F
1	D.S. BROWN	A2R-400 OR E2M-SEAL <5>	1/2"	4 1/2"	2"			
2	WATSON BOWMAN ACME	WABO STRIP SEAL SE-400	0"	4"	1 1/2"			
2	R.J. WATSON, INC.	R.J. STRIP SEAL 400	0"	4"	1 1/2"			

5" MOTION RANGE								
** GROUP	MANUFACTURER	ITEM NAME	OPENING "G" NORMAL TO JT.		MIN. INSTALLATION WIDTH NORMAL TO JOINT	OPENING "G" NORMAL TO JT.		
			MIN.	MAX.		@ 40° F	@ 64° F	@ 80° F
1	D.S. BROWN	DSB STRIP SEAL A2R-XTRA <6>	1/2"	5 1/2"	2"			
2	WATSON BOWMAN ACME	WABO STRIP SEAL SE-500	0"	5"	1 1/2"			
1	R.J. WATSON, INC.	R.J. STRIP SEAL 500	1/2"	5"	1 1/2"			

**GROUP COLUMN NOT TO BE SHOWN IN CONTRACT PLANS. FOR DESIGN PURPOSES ONLY.

NOTES TO DESIGNER:
 DESIGNER TO USE APPROPRIATE DETAILS FROM THIS SHEET AND CONSULT WITH EXPANSION JOINT SPECIALIST FOR LATEST PLAN SHEET LAYOUT, NOTES, AND UP-TO-DATE DETAILS.
 PAGE SHOULD BE RECOGNIZED ACCORDINGLY AFTER ANY DETAILS OR TABLES ARE REMOVED. PAGE SHOULD BE FORMATTED AND VIEWS ALIGNED IN ACCORDANCE WITH CAD STANDARDS AND PRACTICES.



- STRIP SEAL DESIGN NOTES:**
- DESIGNER SHALL INCLUDE APPROPRIATE DETAILS AND TABLES IN THE PLANS.
 - SEE BDM SECTION 9.1.4B AND DESIGN EXAMPLE FOR STRIP SEAL DESIGN AND FOR DETERMINING OPENING "G" NORMAL TO THE JOINT. FILL IN AMOUNTS CALCULATED AND STEEL SHAPES SELECTED.
 - FOR SKEW ANGLE GREATER THAN 30° SEE JOINT SPECIALIST.
 - SEE JOINT SPECIALIST PRIOR TO SPECIFYING A 5" MOTION RANGE STRIP SEAL.
 - A GROUP 1 STRIP SEAL DOES NOT ALLOW FULL CLOSURE OF STEEL SHAPES. A GROUP 2 STRIP SEAL ALLOWS FULL CLOSURE OF STEEL SHAPES.
 - DO NOT USE STEEL SHAPES WITH HORIZONTAL LEGS IN CURB OR BARRIER REGION.

- KEY NOTES:**
- USE FOR NORMAL TRAFFIC VOLUME EXTEND SLAB STEEL INTO BLOCKOUT.
 - USE FOR HIGH TRAFFIC VOLUME REQUIRES 9" x 1'-0" MIN. BLOCKOUT. EXTEND SLAB STEEL INTO THE BLOCKOUT, EXTEND BLOCKOUT TO EDGE OF DECK.
 - PLACED AFTER EXPANSION JOINT IS IN POSITION. THREAD INTO PLACE FROM THE ENDS.
 - ALTERNATIVELY, TRIM VERTICAL LEG OF SSCM2 SHAPE FOR USE IN TRAFFIC BARRIER.
 - USE E2M-SEAL WITH SSE2M SHAPE ONLY.
 - NO SEAL AVAILABLE FOR SSE2M SHAPE.

9.1-A2-1

FILE NAME	9.1-A2-1_Strip Seal.dgn			REGION NO.	STATE
BRIDGE DES. ENG.				10	WASH
BRIDGE PROJ. ENG.					
SUPERVISOR					
DESIGNED BY					
CHECKED BY					
ENTERED BY					
PRELIM. PLAN BY					
ARCH. / SPEC.					
	REVISION	DATE	BY		

 PRELIMINARY PLAN NOT FOR CONSTRUCTION	SEE CERTIFICATION SHEET DATE	SEE CERTIFICATION SHEET DATE	STANDARD DESIGN DRAWINGS EXPANSION JOINTS STRIP SEAL DETAILS	PLAN REF NO
	STAMP BOX	STAMP BOX		SHEET OF SHEETS