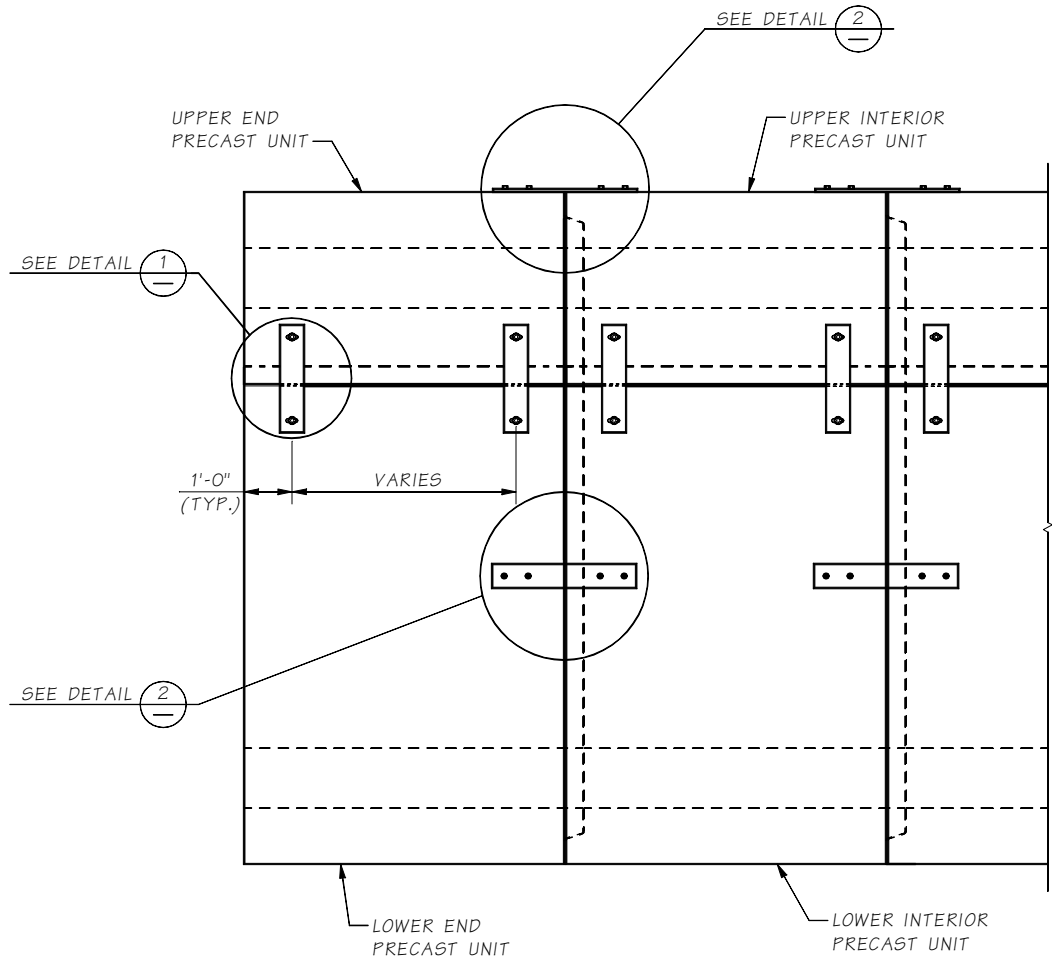


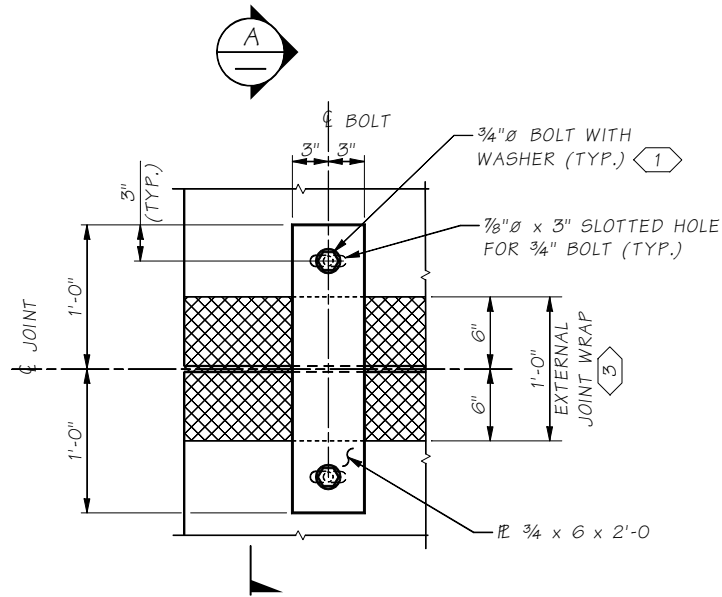
Last revised on: 07/07/2023

1 SHEETS JOB NO. SR

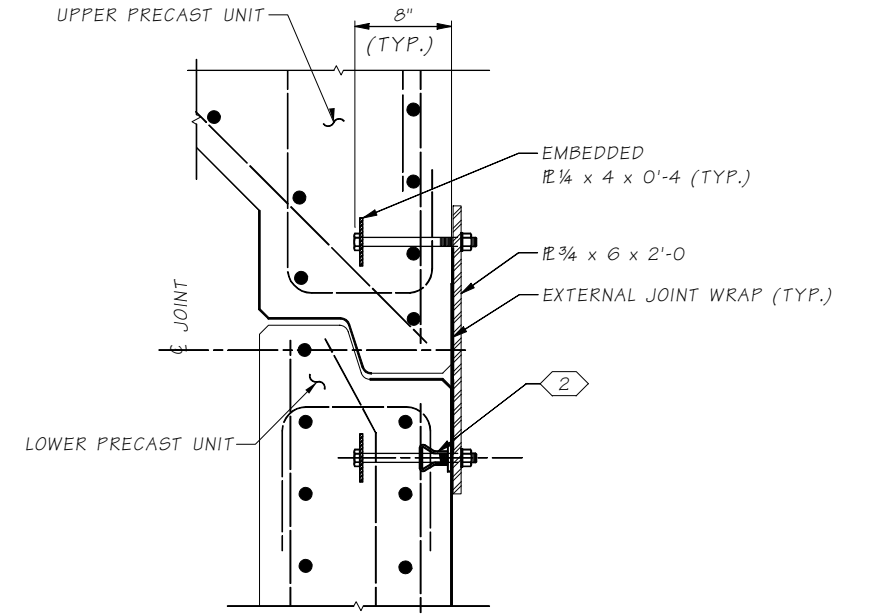
8.3-A2-B



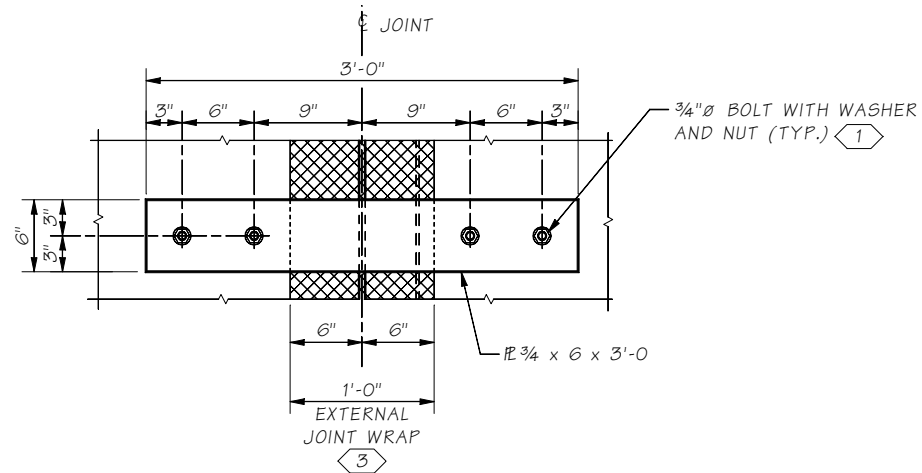
ELEVATION



DETAIL 1
VERTICAL TIE PLATE



SECTION A
REINFORCEMENT NOT SHOWN FOR CLARITY



DETAIL 2
LONGITUDINAL TIE PLATE

NOTES:

- 1 ANCHOR BOLTS SHALL CONFORM TO ASTM F1554 GRADE 105 AND HOT DIP GALVANIZED PER ASTM F2329
- 2 OTHER ANCHOR DEVICE OR DRILLED HOLE WITH EPOXY RESIN ANCHOR MAY BE USED, SUBMIT DETAILS TO THE ENGINEER FOR APPROVAL. IF DRILLED HOLES ARE USED THE FABRICATOR SHALL MARK LOCATIONS OF DRILLED HOLES THAT WILL NOT CONFLICT WITH REINFORCEMENT.
- 3 PLACE EXTERNAL JOINT WRAPS UNDER THE CONNECTION TIE PLATES.

Bridge Design Engr.	M:\STANDARDS\Buried Structures\BURIED STRUCTURES\8.3_A2-B SB Tie Plate Connection Details.MAN						
Supervisor			REGION NO.	STATE	FED. AID PROJ. NO.	SHEET NO.	TOTAL SHEETS
Designed By			10	WASH.			
Checked By			JOB NUMBER				
Detailed By							
Bridge Projects Engr.							
Prelim. Plan By							
Architect/Specialist	DATE	REVISION	BY	APPD			

BRIDGE AND STRUCTURES OFFICE



SPLIT BOXES

TIE PLATE CONNECTION DETAILS

BRIDGE SHEET NO.
SHEET
OF
SHEETS