

**ELEVATION  
CABLE FENCE**

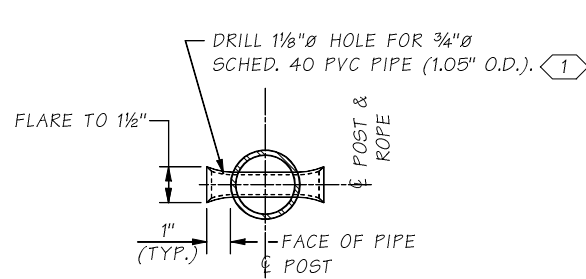
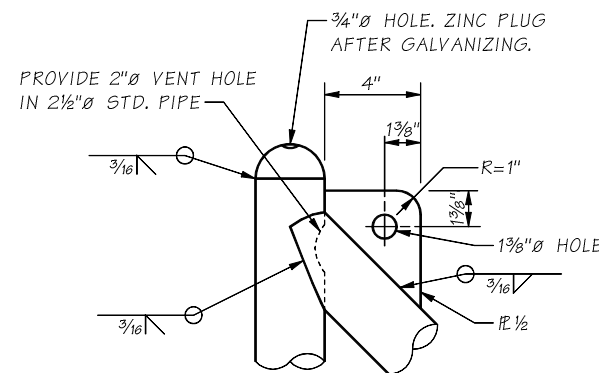
**NOTES:**

1. ALL STEEL PIPE SHALL BE ASTM A53 GRADE B, TYPE E OR S, OR EQUIVALENT HSS ROUND TUBE ASTM A 500 GRADE B
2. ALL STEEL PLATE SHALL BE ASTM A 36 OR ASTM A 572
3. WIRE ROPE SHALL CONSIST OF ZINC-COATED WIRES CONFORMING TO ASTM A 603, OR ASTM A 1023 WITH A PRESTRETCHED MODULUS OF ELASTICITY OF 15,000 KSI, OR "PHILLYSTRAN" ROPE.
4. ALL PARTS EXCEPT ROPE SHALL BE HOT DIP GALVANIZED IN ACCORDANCE WITH AASHTO M111, M232, OR ASTM F2329 AFTER FABRICATION, UNLESS NOTED OTHERWISE.
5. THE SPELTER SOCKETS AND SOCKETING PROCEDURE SHALL BE IN ACCORDANCE WITH THE SPELTER SOCKET AND ROPE MANUFACTURERS RECOMMENDATIONS.
6. ROPE SHALL BE INSTALLED TO 400 LBS TENSION LEAVING A TAKE UP OF 6" STILL AVAILABLE IN THE TURNBUCKLE.
7. EACH CONTINUOUS LENGTH OF CABLE SHALL HAVE A TURNBUCKLE AT ONE END ONLY AND BE ANCHORED TO END POST WITH BRACE AT BOTH ENDS.
8. INTERMEDIATE POSTS AND BRACES SHALL NOT TO BE INSTALLED ACROSS EXPANSION JOINT.
9. CABLE FENCE WAS DESIGNED FOR A 200 LB. LOAD ON THE TOP RAIL APPLIED IN ANY DIRECTION, AS REQUIRED BY WASHINGTON ADMINISTRATIVE CODE 296-880.
10. ROPE, SPELTER SOCKETS, TURNBUCKLES AND THEIR CONNECTIONS SHALL HAVE A MINIMUM BREAKING STRENGTH OF 26 KIPS.
11. ALL POSTS TO BE INSTALLED VERTICAL AND ON THE RETAINED UP-HILL SIDE OF THE WALL. ROPE TO BE INSTALLED PARALLEL TO THE TOP OF WALL.

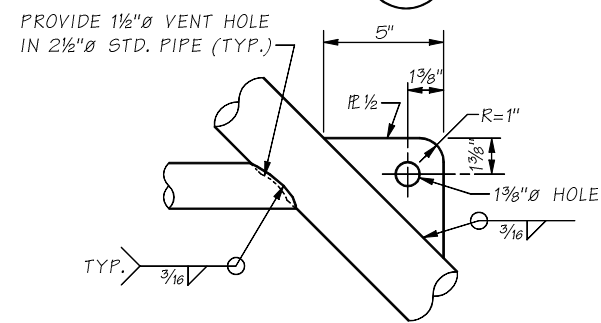
**KEYNOTES:**

- ① BEVEL EDGES OF INSIDE DIA. TO PREVENT CHAFING. PLACE THRU CENTER OF POST AND FLARE ENDS (TYP.).
- ② ANGLES VARY WITH THE SLOPE OF THE TOP OF WALL. APPROX. 45° WHEN INSTALLED ON A LEVEL SURFACE.
- ③ MEASURED PERPENDICULAR TO THE POSTS.
- ④ OMIT INTERMEDIATE POST WHEN SPACING BETWEEN END POST AND INTERMEDIATE BRACE IS LESS THAN 8'-6".

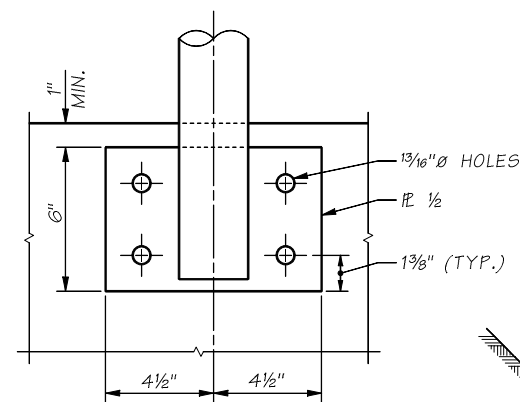
**PVC PIPE SLEEVE DETAIL**



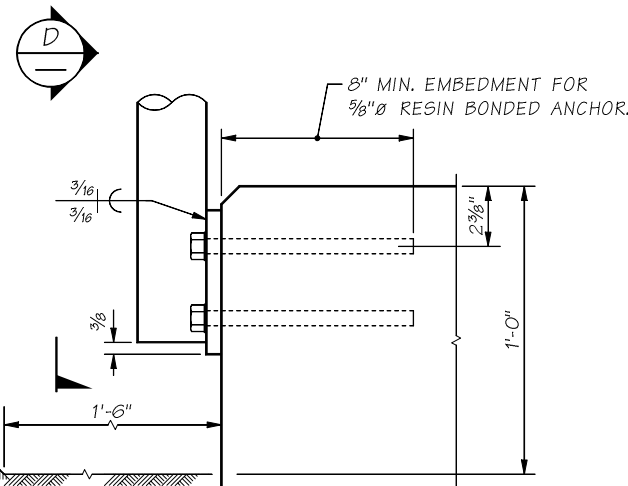
**DETAIL 1**



**DETAIL 2**



**VIEW D**



**SECTION C**

LAST REVISED: 04/20/2022

SHEET

SR JOB NO.

8.1-A6-1

Bridge Design Engr.	MASTANDARDSWallCABLE RAILING-FENCE\8.1-A6-1_CABLE FENCE_SIDE MOUNT.MAN				REGION NO.	STATE	FED. AID PROJ. NO.	SHEET NO.	TOTAL SHEETS
Supervisor					10	WASH.			
Designed By					JOB NUMBER				
Checked By									
Detailed By									
Bridge Projects Engr.									
Prelim. Plan By									
Architect/Specialist	DATE	REVISION	BY	APPD					

**BRIDGE  
AND  
STRUCTURES  
OFFICE**



CABLE FENCE - SIDE MOUNT

BRIDGE SHEET NO.  
SHEET  
OF  
SHEETS