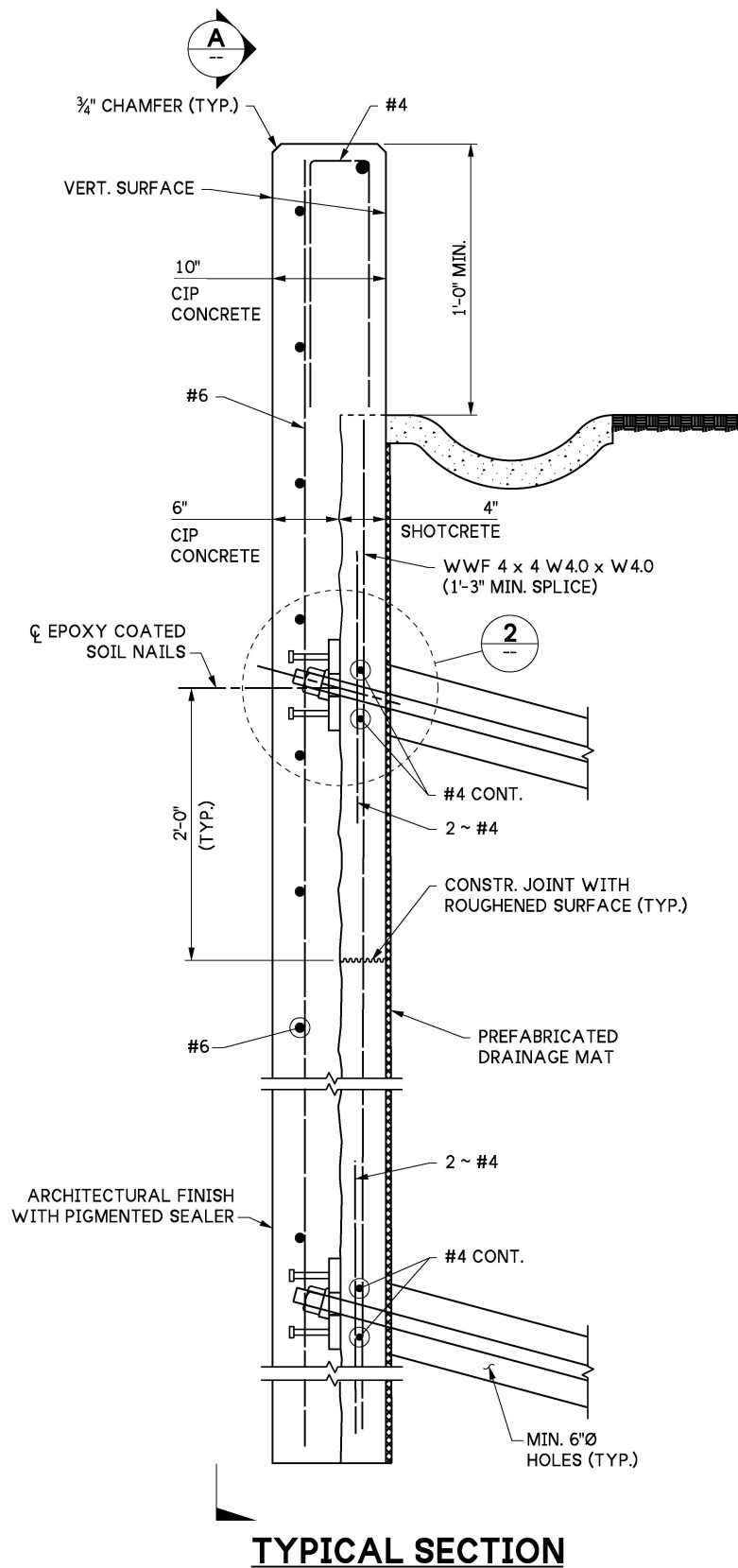
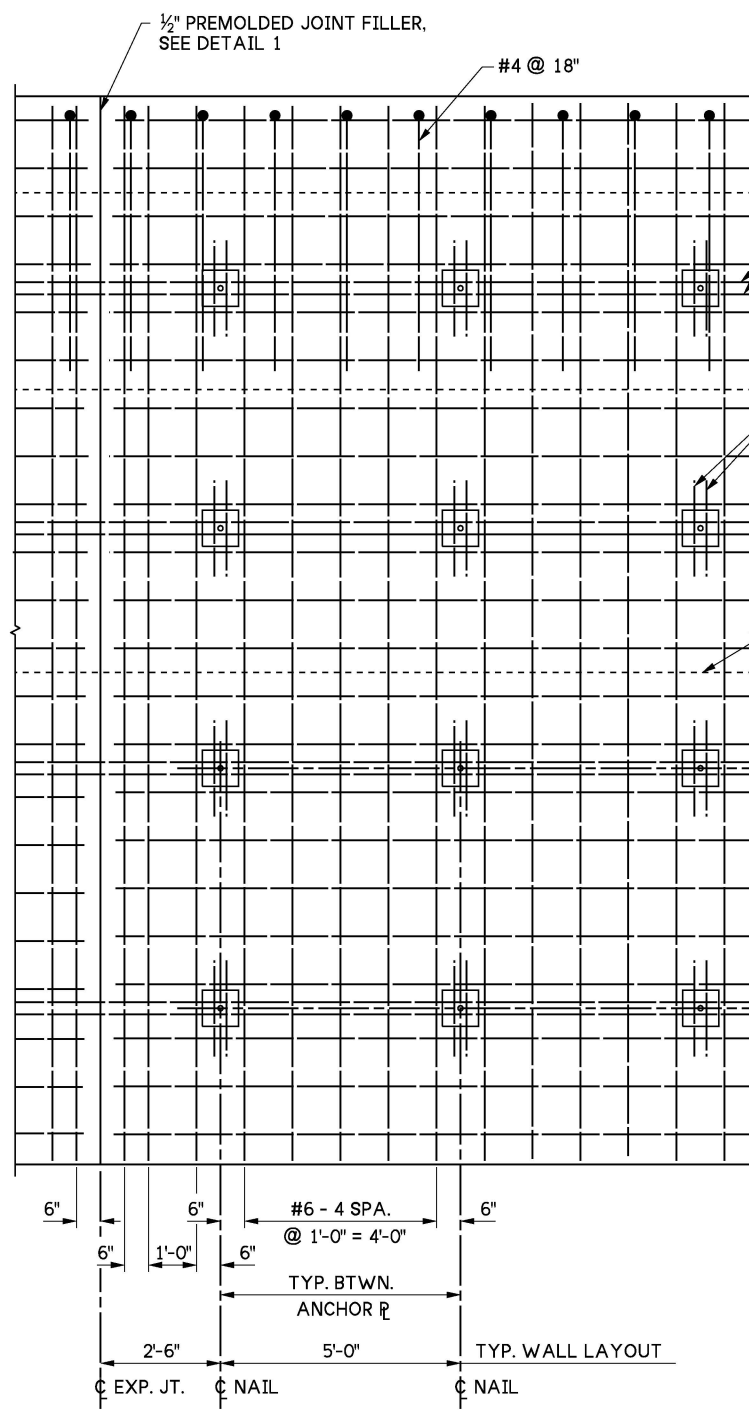


LAST REVISED: 06/13/2025

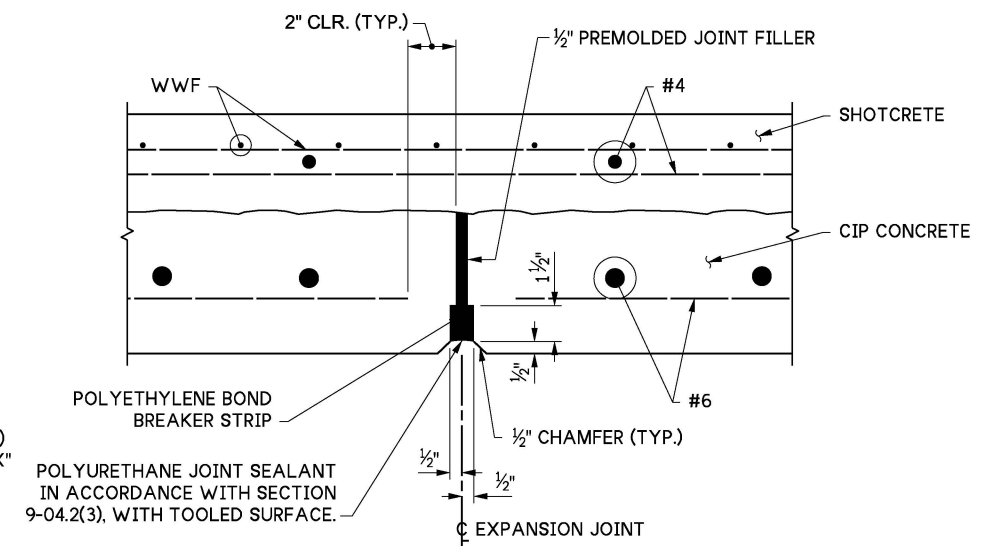


TYPICAL SECTION



FASCIA WALL REINFORCEMENT
WWF NOT SHOWN FOR CLARITY

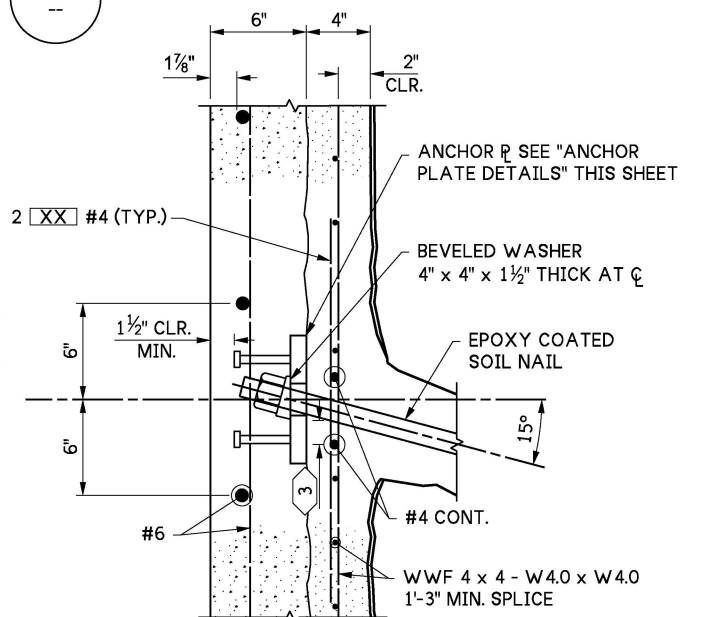
EPOXY COATED SOIL NAILS



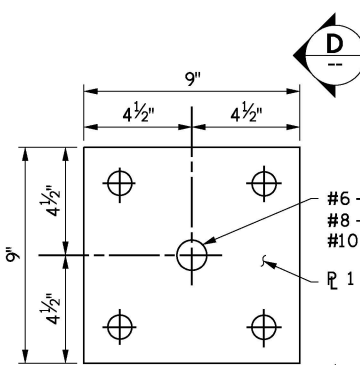
DETAIL 1

NOTES TO DESIGNER:

1. THE REINFORCEMENT SHOWN ON THIS SHEET IS NOT STANDARD. REINFORCEMENT SIZE AND SPACING NEEDS TO BE DESIGNED FOR THE PROJECT SPECIFIC FACTORED DESIGN LOADS.
2. ANCHOR PLATE DETAILS AND HEADED STUD SIZE AND LENGTH SHOWN ON THIS SHEET IS NOT STANDARD AND SHALL BE DESIGNED FOR THE PROJECT SPECIFIC FACTORED DESIGN LOADS.
3. THE VERTICAL BARS PLACED ON EITHER SIDE OF THE SOIL NAIL IN THE INITIAL SHOTCRETE FACING SHALL BE A MINIMUM LENGTH OF 0.6Sv, SEE AASHTO LRFD BDS FIGURE 11.12.6.2.2-1.

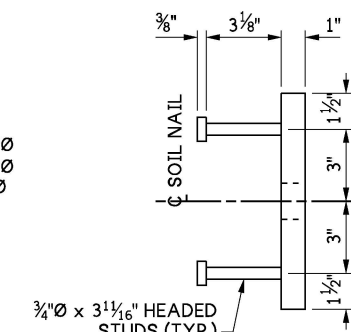


DETAIL 2



ANCHOR PLATE DETAILS

AASHTO A 36



VIEW D

KEY NOTES:

- 1 EXPANSION JOINT SPACING SHALL BE AS SHOWN ON BRIDGE SHEET ??
- 2 2'-0" MINIMUM LAP SPLICE
- 3 1 1/2" CLEAR.

8.1-A4-3

FILE NAME	8.1-A4-3_Soil Nail Fascia Epoxy Coated.dgn		
BRIDGE DES. ENG.			
BRIDGE PROJ. ENG.			
SUPERVISOR			
DESIGNED BY			
CHECKED BY			
ENTERED BY			
PRELIM. PLAN BY			
ARCH. / SPEC.			
PLOT DATE: 18-Feb-2026	PLOT TIME: 8:09:19 AM	PLOTTED BY: deboejak	FILE PATH: pw://projectstore.wsdot.wa.gov:WSDOT/Documents/_HQ/Bridge & Structures/Bridge Design/_Design Standards/Standard Drawings and Details/Walls and Fall Protection/Soil Nail Walls/_DGN/8.1-A4-3_Soil Nail Fascia Epoxy Coated.dgn

REGION NO.	STATE
10	WASH
JOB NUMBER	
CONTRACT NO.	



SEE CERTIFICATION SHEET DATE	SEE CERTIFICATION SHEET DATE
STAMP BOX	STAMP BOX

STANDARD DESIGN DRAWINGS SOIL NAIL WALLS		PLAN REF NO
SOIL NAIL WALL FASCIA - EPOXY COATED DETAILS 3 OF 4		SHEET OF SHEETS