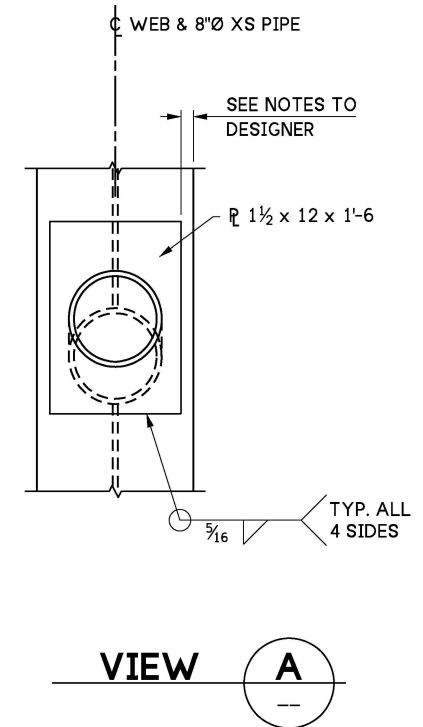
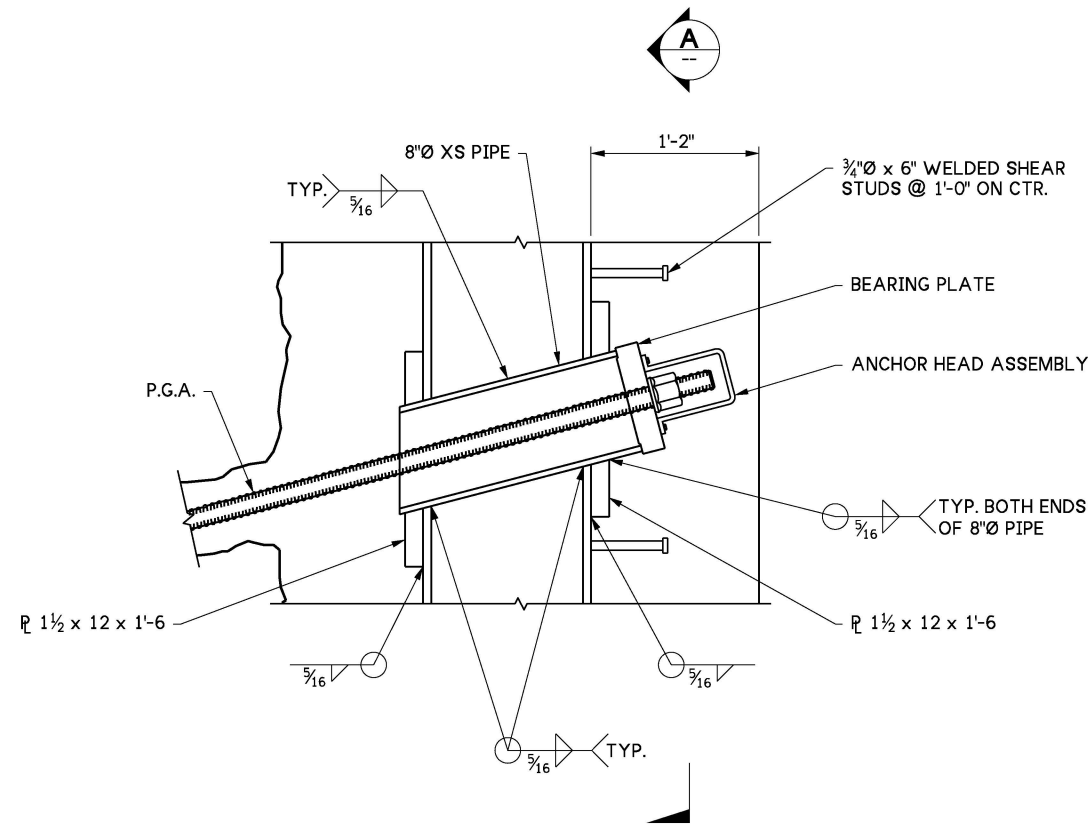
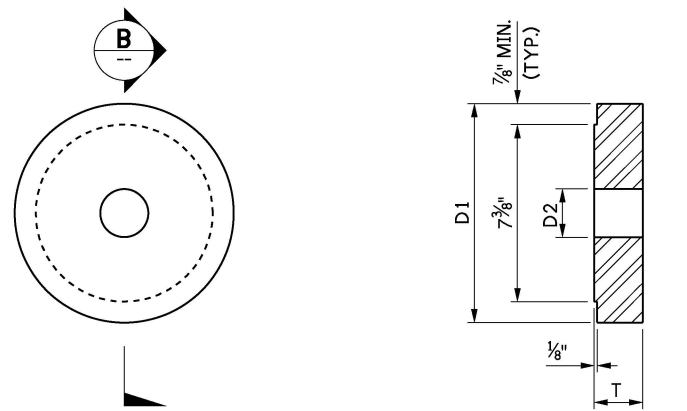


LAST REVISED: 10/16/2025



**ELEVATION - SOLDIER PILE  
WITH P.G.A. THRU WEB**



**BEARING PLATE**  
BEARING PLATE SHALL BE SIZED IN  
ACCORDANCE WITH THE STD.  
SPEC. SECTION 6-17.3(5).

**SECTION B**

**NOTES TO DESIGNER:**

1. PLATES MUST BE CHECKED FOR SIZE AND WELDS. PLATES ARE USED TO REPLACE FLANGE STEEL REMOVED FOR PIPE INSTALLATION.
2. WELD MUST BE CHECKED ALONG WEB TO PIPE AND PLATE TO FLANGE. WELDS MUST BE CAPABLE OF TRANSFERRING PGA LOADS AND FLEXURAL LOADS.
3. FOR WALLS WITH P.G.A. USE SECTION SIZE WITH A FLANGE WIDTH GREATER THAN OR EQUAL TO HP 12X53 OR W 12X65.

8.1-A3-4

FILE NAME: 8.1-A3-4_Soldier Pile-Tieback Wall Details 3 of 3.dgn				REGION NO. 10	STATE WASH		STANDARD DESIGN DRAWINGS WALLS	PLAN REF NO.
BRIDGE DES. ENG.				JOB NUMBER				SHEET OF SHEETS
BRIDGE PROJ. ENG.				CONTRACT NO.		PRELIMINARY PLAN NOT FOR CONSTRUCTION	SOLDIER PILE / TIEBACK WALL DETAILS 3 OF 3	
SUPERVISOR								
DESIGNED BY								
CHECKED BY								
ENTERED BY								
PRELIM. PLAN BY								
ARCH. / SPEC.								
REVISION				DATE	BY			
PLOT DATE: 05-Jan-2026				PLOT TIME: 1:19:53 PM		PLOTTED BY: deboejak		FILE PATH: pw://projectstore.wsdot.wa.gov:WSDOT/Documents/_HQ/Bridge & Structures/Bridge Design/_Design Standards/Standard Drawings and Details/Walls and Fall Protection/Tieback Walls/_DGN/8.1-A3-4_Soldier Pile-Tieback Wall Details 3 of 3.dgn