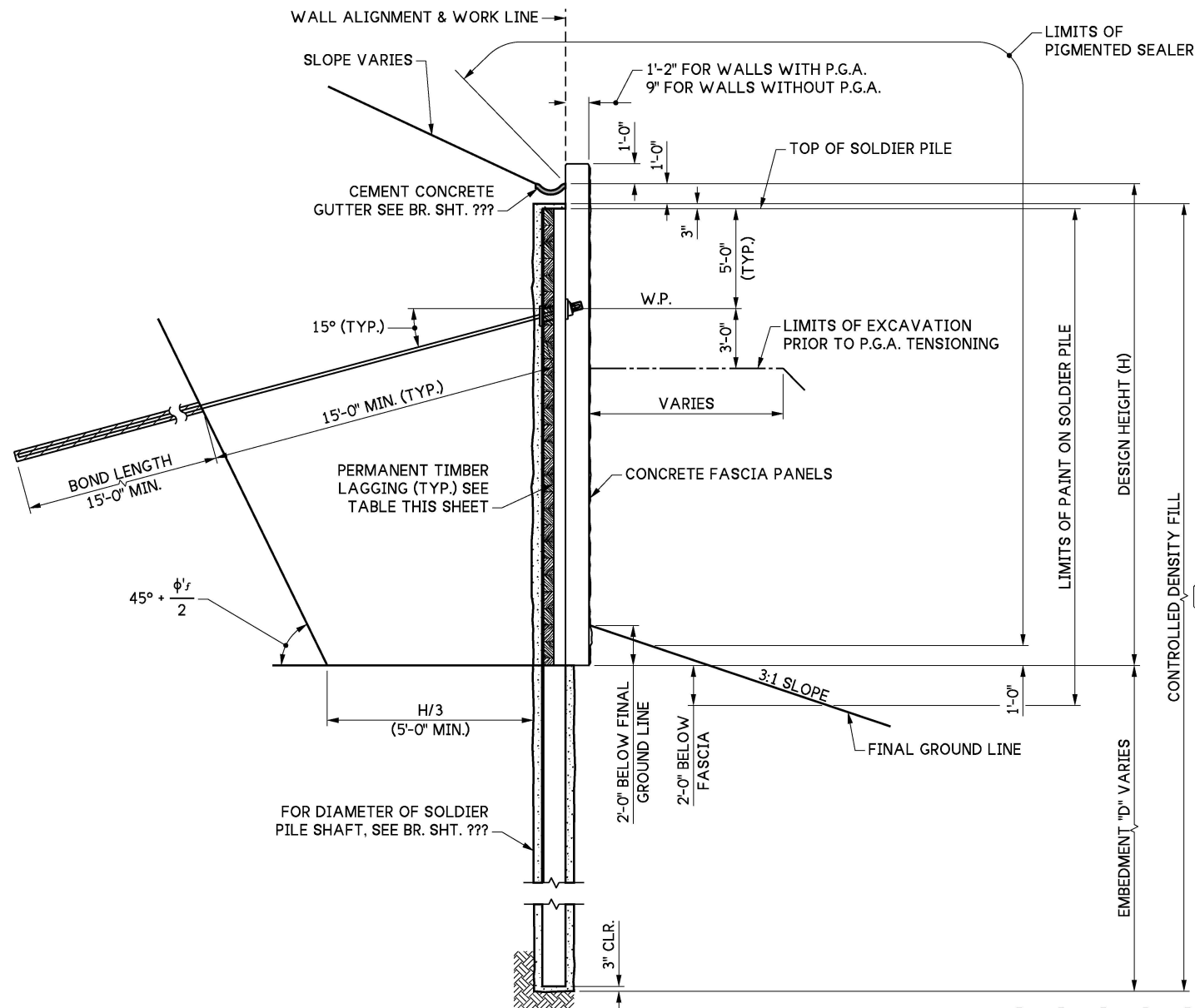


LAST REVISED: 10/14/2025



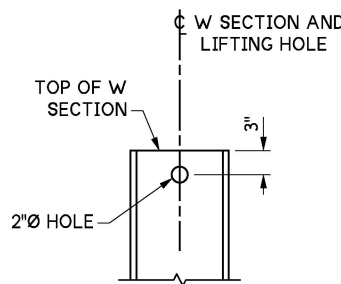
TYPICAL SECTION
 SHOWN FOR SOLDIER PILE WITH P.G.A.
 SIMILAR FOR SOLDIER PILE WITHOUT P.G.A.
 P.G.A. = PERMANENT GROUND ANCHOR

PERMANENT TIMBER LAGGING SIZES μ	
DEPTH (FT) τ	SIZE τ
0 - 9	4 x
9 - 18	6 x
18 - 30	8 x

4 x - OPTIONAL 4 x 8, 4 x 10, OR 4 x 12
 6 x - OPTIONAL 6 x 8, 6 x 10, OR 6 x 12
 8 x - OPTIONAL 8 x 8, 8 x 10, OR 8 x 12

KEY NOTES:

- 1 USE EITHER CONTROLLED DENSITY FILL OR LEAN CONCRETE TYPE 1 WHEN PLACED IN THE DRY. USE LEAN CONCRETE TYPE 1 WHEN PLACED IN THE WET.



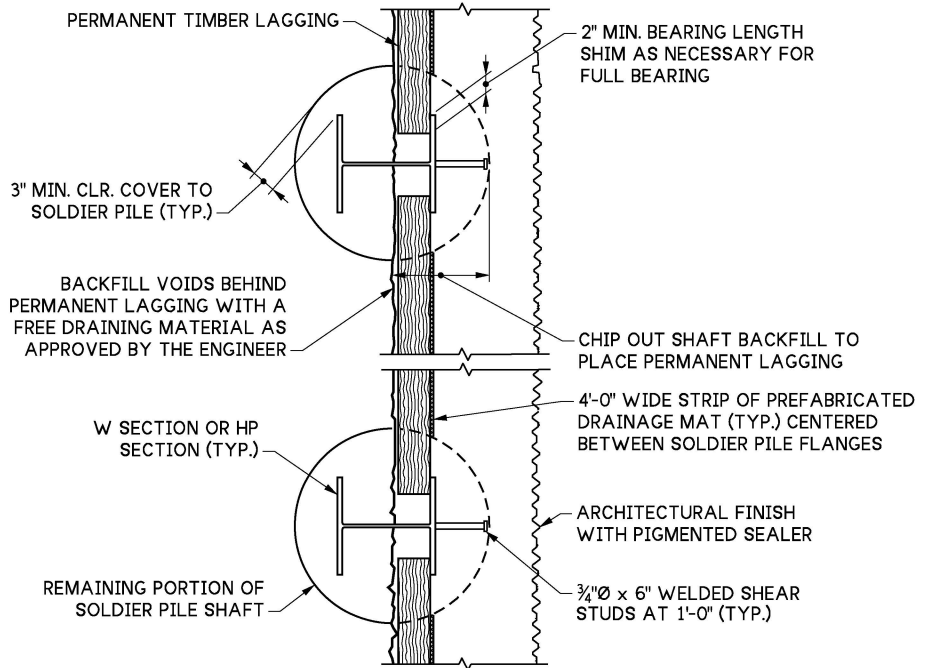
SOLDIER PILE LIFTING HOLE

LIFTING HOLE TO BE DRILLED IN THE SHOP PRIOR TO PAINTING THE PILE

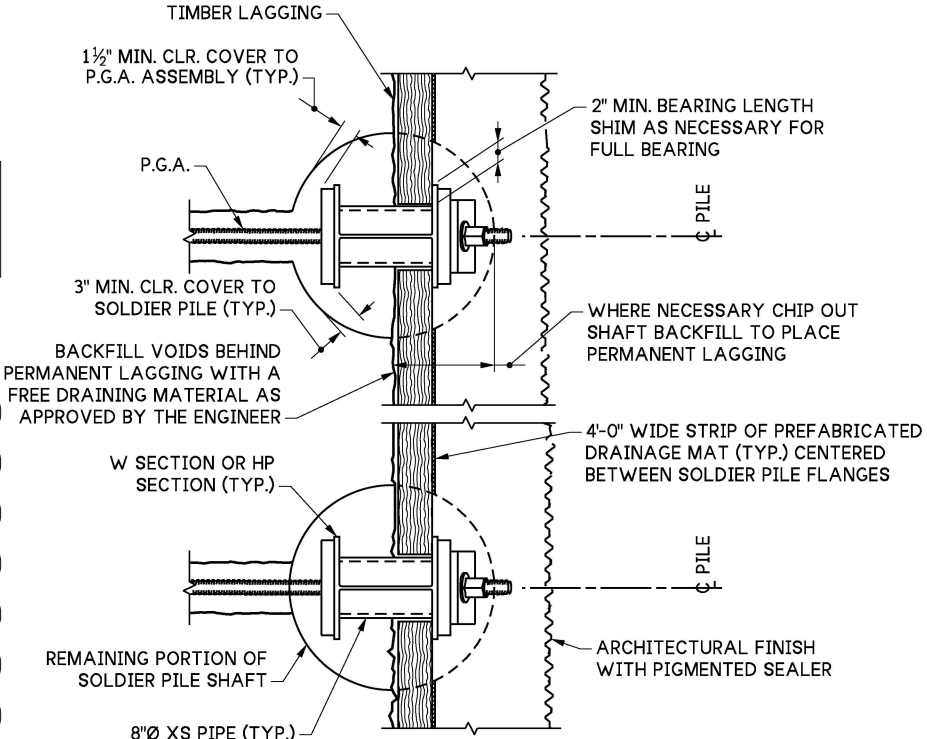
LAGGING IN SERVICE LESS THAN 36 MONTHS

NOTES TO DESIGNER:

- τ DEPTHS AND SIZES SHOWN ARE FOR EXAMPLE ONLY. FILL IN THE TABLE ACCORDING TO THE EARTH PRESSURE DIAGRAM AND RECOMMENDATIONS FROM THE GEOTECHNICAL SERVICES BRANCH, BASED ON LRFD TIMBER DESIGN FOR PERMANENT LAGGING.
 - μ DETERMINE, IF POSSIBLE, THE LENGTH OF TIME THAT THE WALL LAGGING WILL BE USED AS THE PRIMARY STRUCTURAL MEMBER IN THE TRANSVERSE DIRECTION BEFORE A PERMANENT WALL FASCIA IS APPLIED.
- FOR WALLS WITH P.G.A. USE A SECTION SIZE WITH A FLANGE WIDTH BIGGER THAN OR EQUAL TO HP12x53 OR W12x65.
- FOR WALLS WITHOUT CONCRETE FASCIA PANELS:
- HEM-FIR TIMBER LAGGING SHALL NOT BE USED.
 - DOUGLAS FIR-LARCH, GRADE 2 OR BETTER, TREATED IN ACCORDANCE WITH SECTION 9-09.3(1), SHALL BE USED AND SHALL BE SPECIFIED IN THE PLAN SHEETS AND SPECIAL PROVISIONS.



PLAN SOLDIER PILE WALL WITHOUT P.G.A.



PLAN SOLDIER PILE WALL WITH P.G.A.

8.1-A3-3

FILE NAME	8.1-A3-3_Soldier Pile-Tieback Details 2 of 3.dgn		
BRIDGE DES. ENG.			
BRIDGE PROJ. ENG.			
SUPERVISOR			
DESIGNED BY			
CHECKED BY			
ENTERED BY			
PRELIM. PLAN BY			
ARCH. / SPEC.			
	REVISION	DATE	BY

REGION No.	STATE
10	WASH
JOB NUMBER	
CONTRACT NO.	



SEE CERTIFICATION SHEET DATE	SEE CERTIFICATION SHEET DATE
STAMP BOX	STAMP BOX

STANDARD DESIGN DRAWINGS WALLS	PLAN REF NO
SOLDIER PILE / TIEBACK WALL DETAILS 2 OF 3	SHEET OF SHEETS