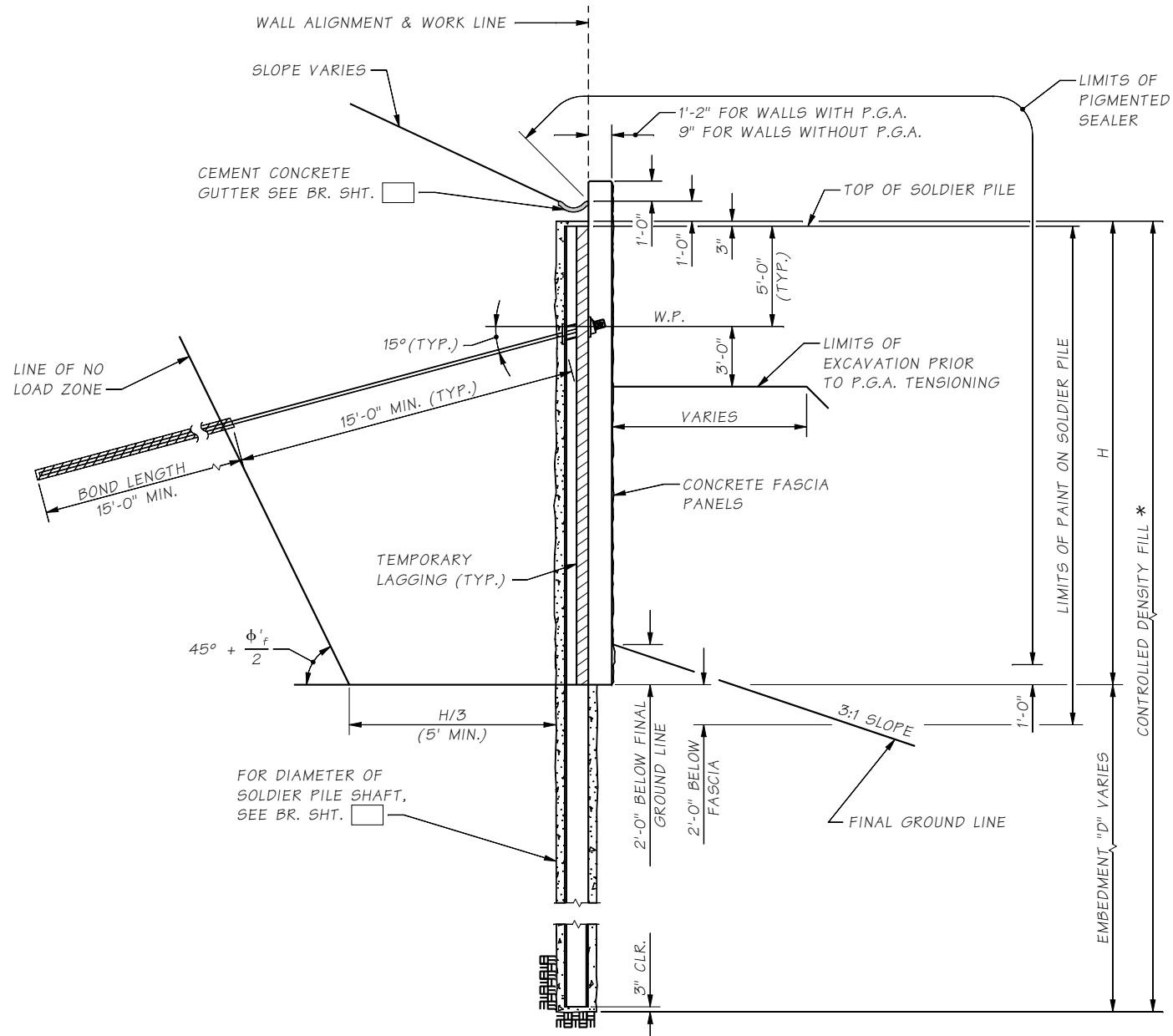


Last revised on : 04/08/2019

SHEET NO. JOB NO. SR

8.1-A3-2



TYPICAL SECTION

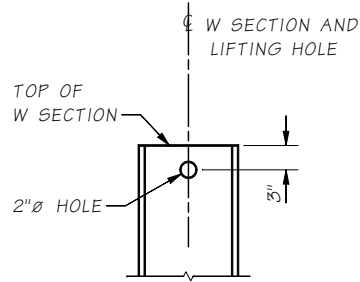
SHOWN FOR SOLDIER PILE WITH P.G.A.
SIMILAR FOR SOLDIER PILE WITHOUT P.G.A.
P.G.A.= PERMANENT GROUND ANCHOR
TEMPORARY LAGGING SHALL CONFORM TO
STANDARD SPECIFICATION SECTION 6-16.3(6).

* USE CONTROLLED DENSITY FILL WHEN PLACED
IN THE DRY. USE PUMPABLE LEAN CONCRETE
WHEN PLACED IN THE WET.

Note to Designer:

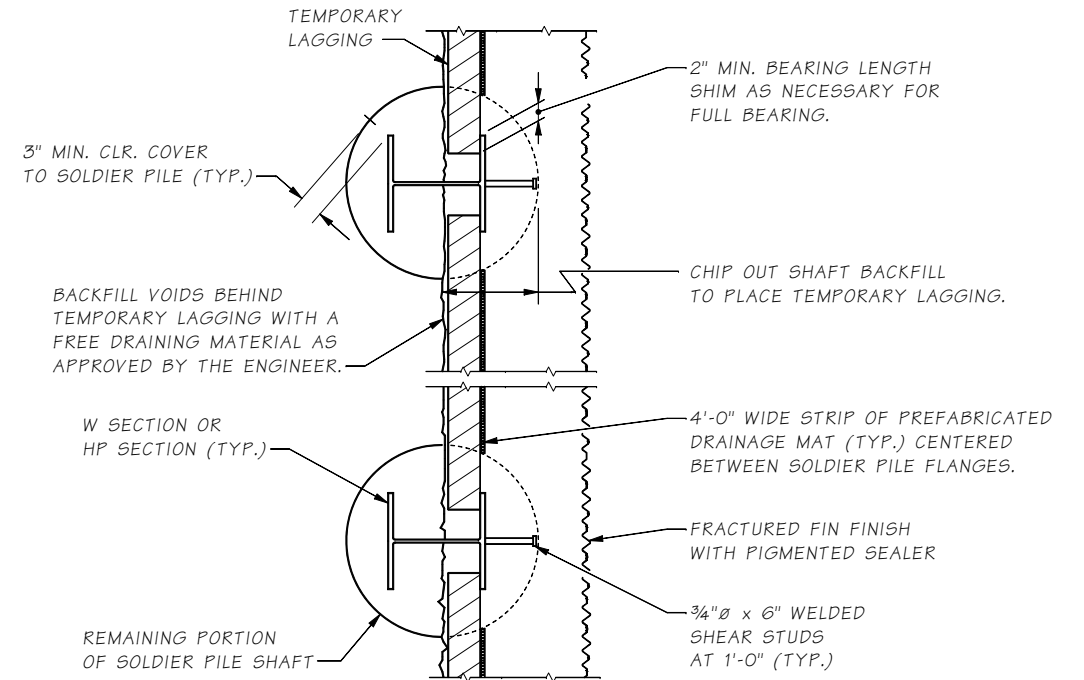
For walls with P.G.A. use a
section size with a flange
width bigger than or equal to
HP12x53 or W12x65

LAGGING IN SERVICE
LESS THAN 36 MONTHS

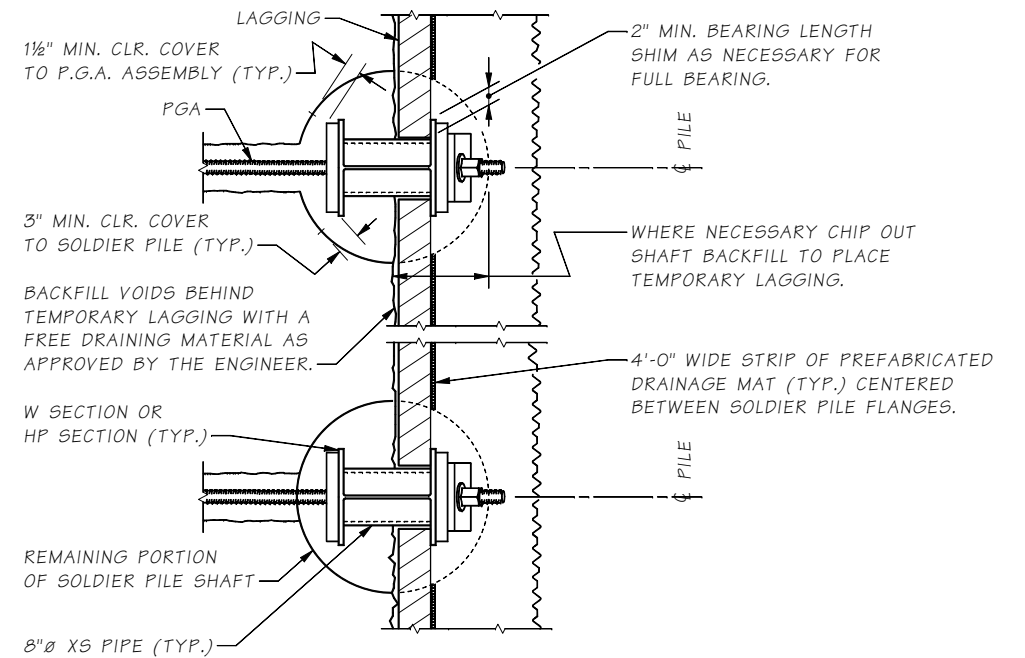


**SOLDIER PILE
LIFTING HOLE**

LIFTING HOLE TO BE DRILLED
IN THE SHOP PRIOR TO
PAINTING THE PILE.



**PLAN
SOLDIER PILE WALL
WITHOUT P. G. A.**



**PLAN
SOLDIER PILE WALL
WITH P. G. A.**

Bridge Design Engr.	M:\STANDARDS\Wall\SOLDIER TIEBACK\SOLDIER TIEBACK DETAILS A.MAN						
Supervisor			REGION NO.	STATE	FED. AID PROJ. NO.	SHEET NO.	TOTAL SHEETS
Designed By			10	WASH.			
Checked By			JOB NUMBER				
Detailed By							
Bridge Projects Engr.							
Prelim. Plan By							
Architect/Specialist	DATE	REVISION	BY	APP'D			

Mon Apr 08 14:14:26 2019

**BRIDGE
AND
STRUCTURES
OFFICE**



SOLDIER PILE/TIEBACK WALL
DETAILS 1 OF 3

BRIDGE SHEET NO.
SHEET
OF
SHEETS