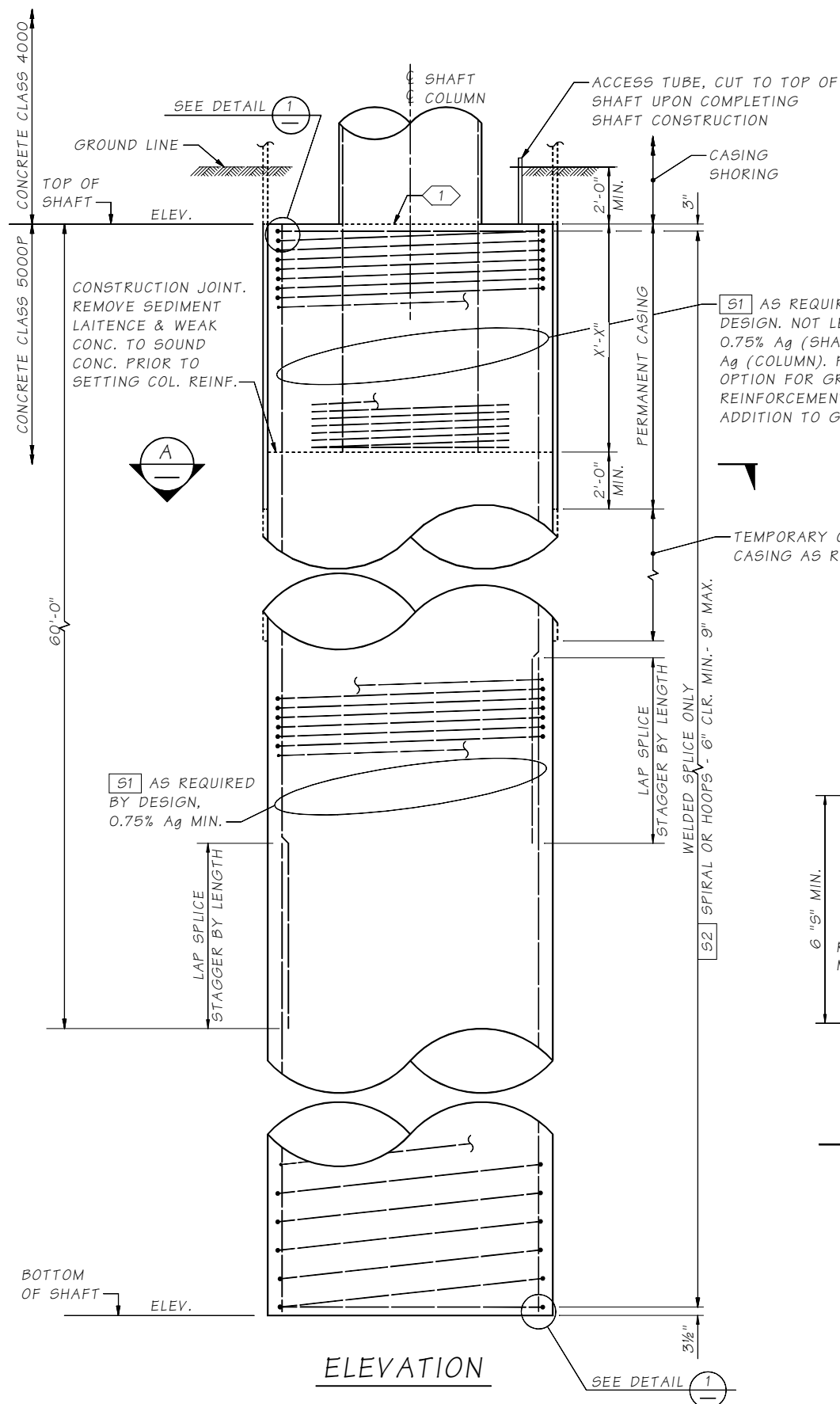
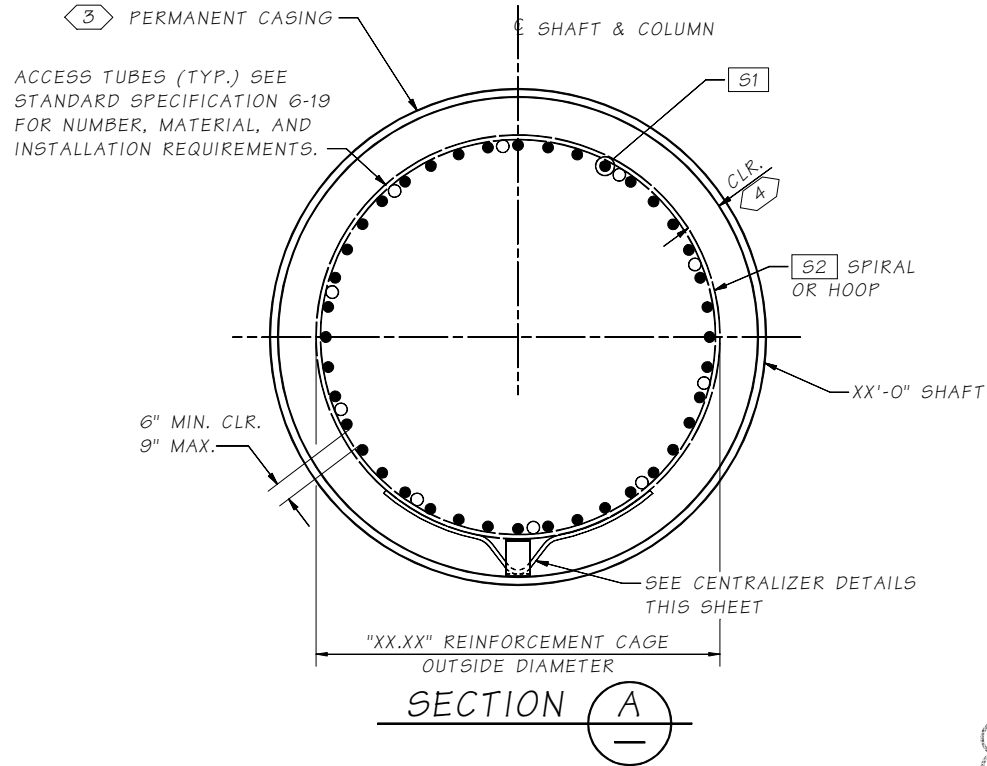


LAST REVISED: 03/14/2023

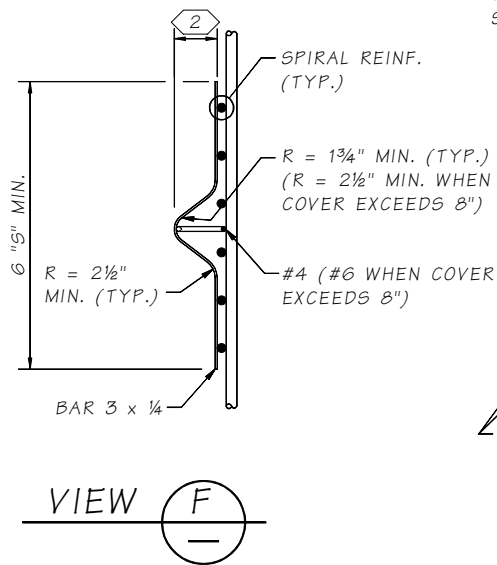
SR JOB NO. SHEET 7.8.2-1



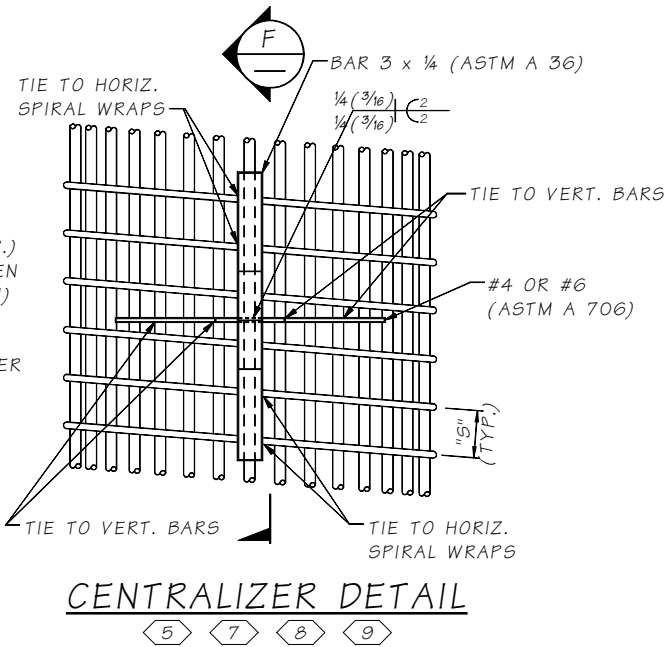
ELEVATION



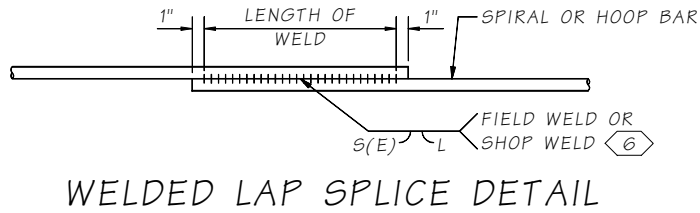
SECTION A



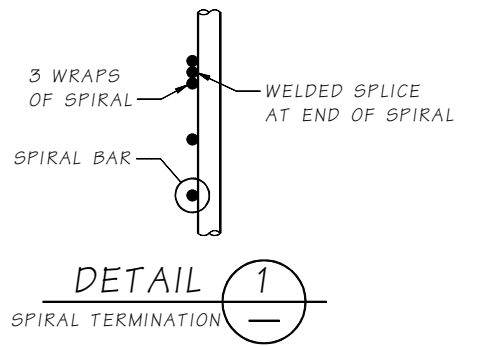
VIEW F



CENTRALIZER DETAIL



WELDED LAP SPLICE DETAIL



DETAIL 1
SPIRAL TERMINATION

SHAFT HOOP OPTIONS

	WELD DIMENSIONS (IN.)		
	S	E	LENGTH (L)
#7	7/16	1/4	7
#8	1/2	1/4	8
#9	9/16	5/16	8

SHAFT SPIRAL OPTIONS

	WELD DIMENSIONS (IN.)		
	S	E	LENGTH (L)
#4	1/4	1/8	4
#5	5/16	3/16	6
#6	3/8	3/16	6

Designer Notes:
Butt welded hoops required if plastic hinging is expected.

Specify optional splice / mechanical coupler for S1 bar lengths 80'-0" or less. Bars are often available at 80'-0"

Mechanical coupler required for bar sizes #14 and #18

Reinforcement cage outside diameter shall be per BDM table 7.8.2-2

Geotech to provide "X" feet in Note 10. Remove Note 10 if not required.

KEY NOTES:

- CONSTRUCTION JOINT WITH ROUGHENED SURFACE.
- MINIMUM CONCRETE COVER MINUS 1/2".
- SEE STD. SPEC. 6-19.3(3)B5 FOR PERMANENT SLIP CASING.
- SEE STD. SPEC. 6-19.3(5)C. FOR MINIMUM CONCRETE COVER.
- SEE STD. SPEC. 6-19.3(5)B FOR SPACING REQUIREMENTS.
- WELDING SHALL MEET THE REQUIREMENTS OF STD. SPEC. 6-02.3(24)E FOR WELD DIMENSIONS, SEE SHAFT SPIRAL / HOOP OPTIONS TABLE THIS SHEET
- CENTRALIZERS SHALL BE EPOXY COATED OR PAINTED WITH PAINT CONFORMING TO STANDARD SPECIFICATION 9-08.1(2)C OR 9-08.1(2)F AFTER FABRICATION.
- EACH LEG SHALL BE TIED TO TWO (2) VERTICAL BAR AND TWO (2) SPIRAL WRAPS OR TWO (2) HOOPS.
- CAGECASTER® REBAR CAGE SPACERS BY FOUNDATION TECHNOLOGIES MAY BE USED IN LIEU OF DETAIL SHOWN. SPACING REQUIREMENTS SHALL BE PER MANUFACTURER'S RECOMMENDATIONS. EACH LEG SHALL BE TIED TO A MINIMUM OF TWO (2) SPIRAL WRAPS OR HOOPS.
- EXCAVATION IN ADVANCE OF THE CASING TIP SHALL NOT EXCEED "X" FEET.

Bridge Design Engr.	M:\STANDARDS\Shafts and Columns\7.8.2-1_TYPICAL SHAFT DETAILS.MAN	REGION NO.	STATE	FED. AID PROJ. NO.	SHEET NO.	TOTAL SHEETS
Supervisor		10	WASH.			
Designed By		JOB NUMBER				
Checked By						
Detailed By						
Bridge Projects Engr.						
Prelim. Plan By						
Architect/Specialist	DATE	REVISION	BY	APPD		

Tue Mar 14 11:37:50 2023

BRIDGE
AND
STRUCTURES
OFFICE



TYPICAL SHAFT DETAILS

BRIDGE SHEET NO.
SHEET
OF
SHEETS