

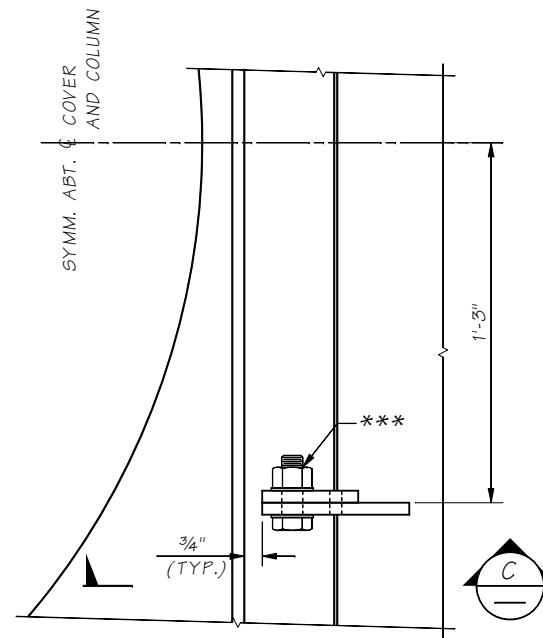
* COLUMN RADIUS + 1/2"
 ** SILO RADIUS + 3" MIN.

PLAN
COLUMN SILO COVER

REQUIRED AT PIERS ??? - ??? TOTAL.

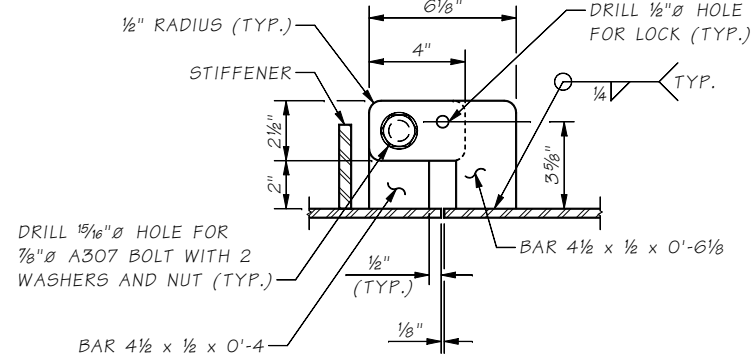
NOTE:
 COLUMN SILO COVER IS DESIGNED FOR A MAXIMUM CLEAR DISTANCE OF 2'-9" BETWEEN COLUMN AND COLUMN SILO. DESIGNER TO VERIFY MEMBER SIZES.

NOTE:
 THE CONTRACTOR SHALL FIELD MEASURE THE LOCATION OF THE COLUMN RELATIVE TO THE LOCATION OF THE SHAFT AND MODIFY THE COLUMN SILO COVER DETAILS TO PROVIDE THE MINIMUM OVERHANG BEYOND THE COLUMN SILO.

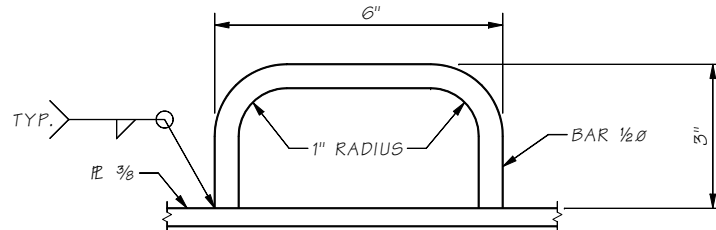


DETAIL B
 HINGE

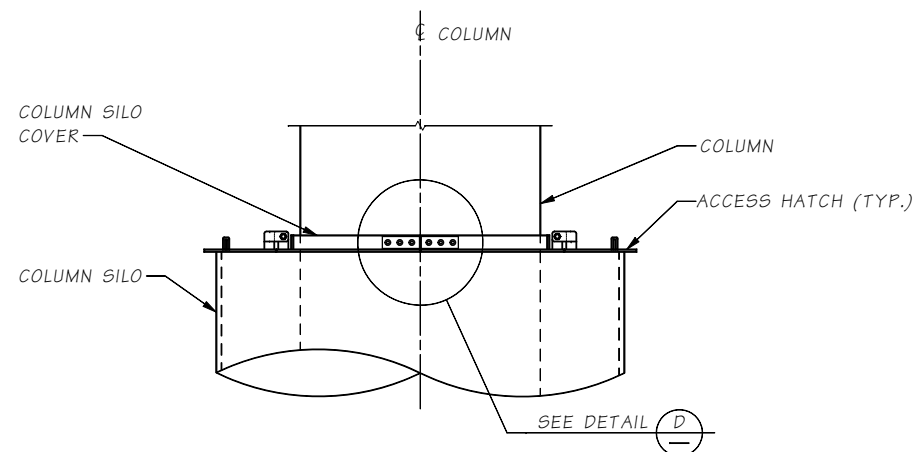
*** INSTALL NUT SO THAT HATCH OPENS FREELY. TACK WELD NUT TO BOLT. APPLY TWO COATS OF GALVANIZING REPAIR PAINT FORMULA A-9-73.



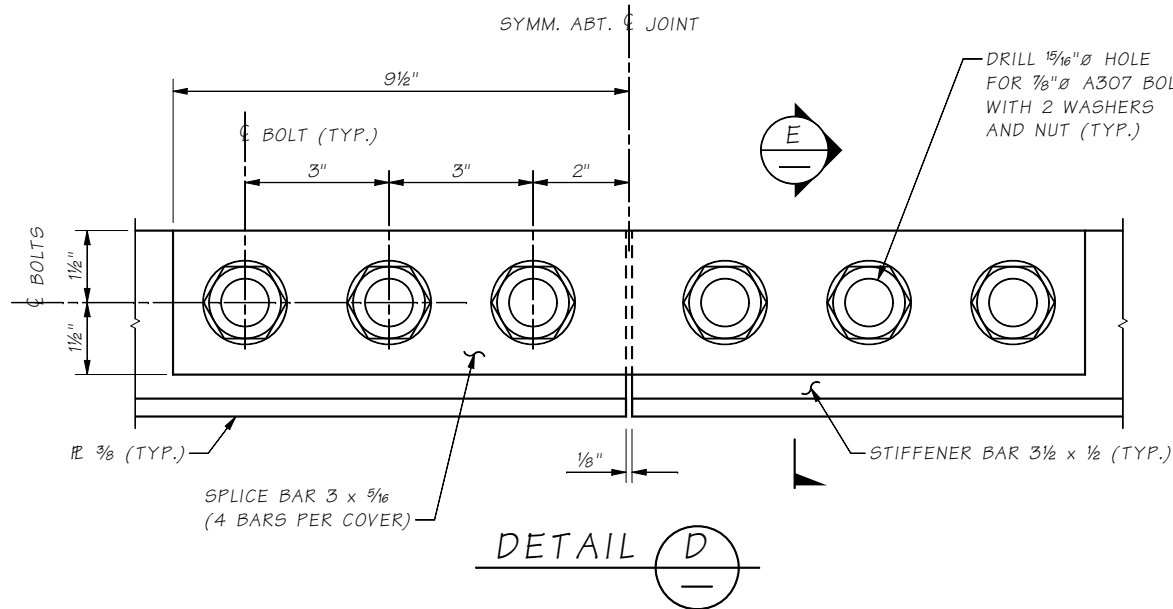
SECTION C



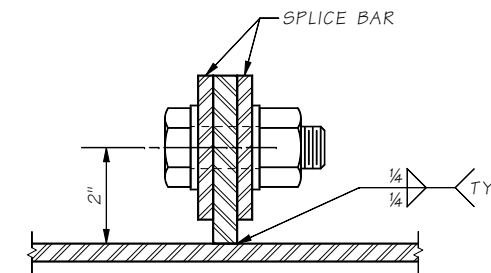
DETAIL A
 HANDLE; 4 EACH



COLUMN SILO COVER DETAIL



DETAIL D



SECTION E

THE CONTRACTOR SHALL VERIFY THAT THE COVER FITS OVER THE ACTUAL COLUMN SILO.

Last revised on : 3/6/2017

7.3-A1-1

Bridge Design Engr.	M:\STANDARDS\shafts and Columns\COLUMN SILO COVER.MAN					REGION NO.	STATE	FED. AID PROJ. NO.	SHEET NO.	TOTAL SHEETS
Supervisor						10	WASH.			
Designed By						JOB NUMBER				
Checked By										
Detailed By										
Bridge Projects Engr.										
Prelim. Plan By										
Architect/Specialist	DATE	REVISION	BY	APP'D						

BRIDGE AND STRUCTURES OFFICE

Washington State Department of Transportation

BRIDGE SHEET NO.

SHEET

OF

SHEETS

COLUMN SILO COVER DETAILS