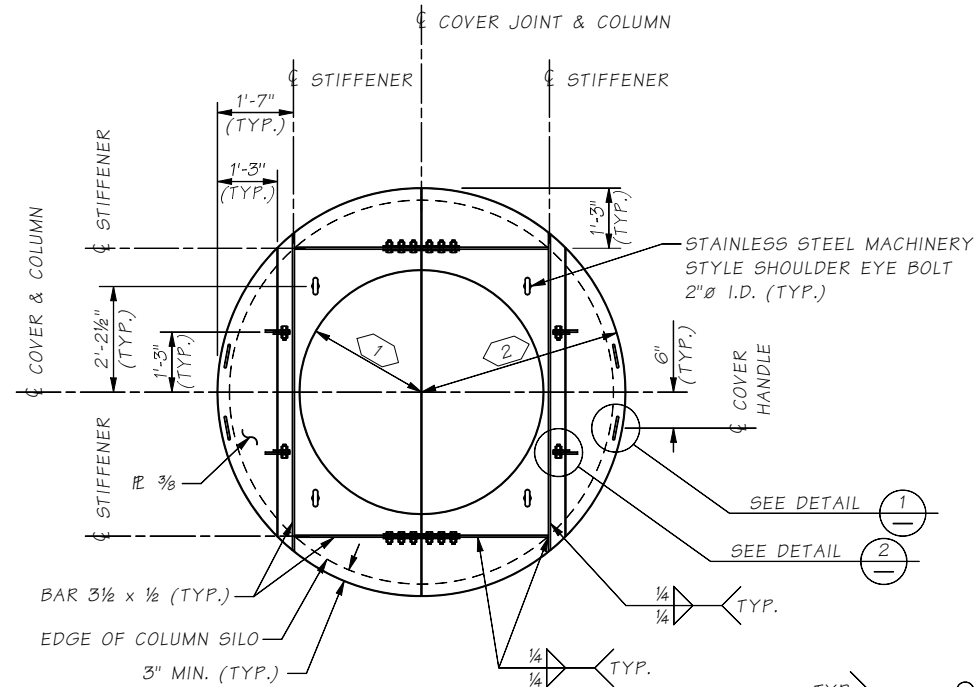


Last revised on : 01/20/2021

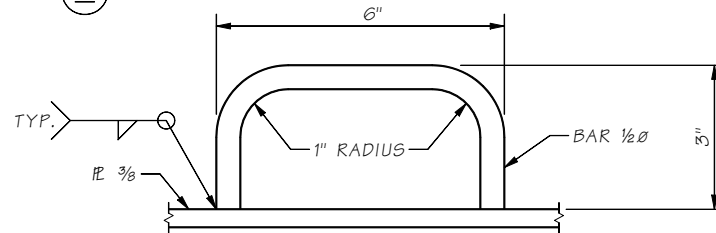
SR 5 FILE NO. SHEET 1

7.3-A1-1

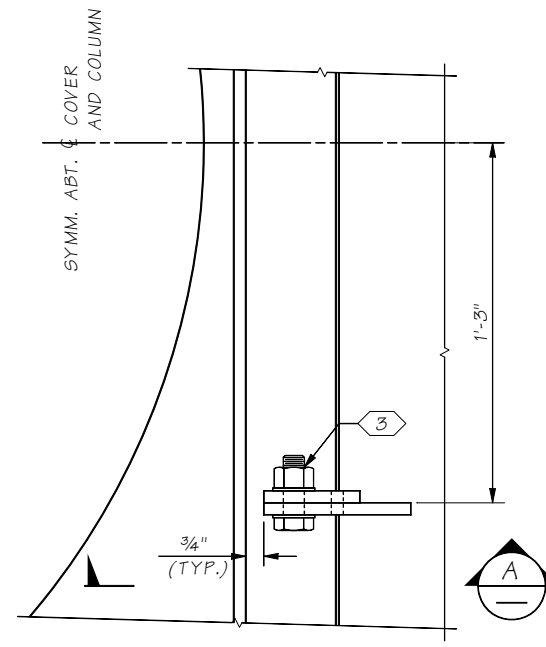


**PLAN**  
**COLUMN SILO COVER**  
REQUIRED AT PIERS ??? - ??? TOTAL.

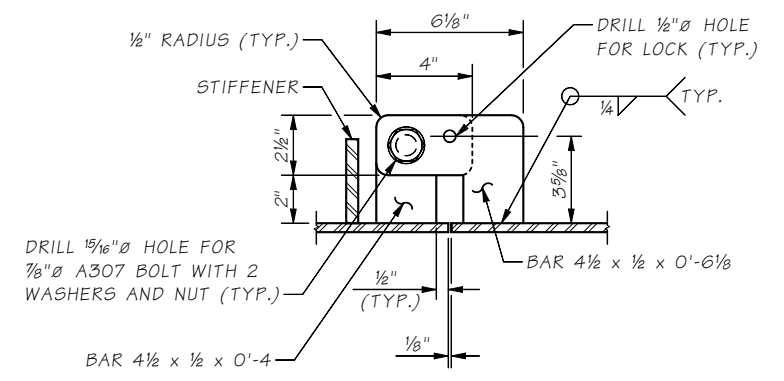
**NOTE TO DESIGNER:**  
COLUMN SILO COVER IS DESIGNED FOR A MAXIMUM CLEAR DISTANCE OF 2'-9" BETWEEN COLUMN AND COLUMN SILO. DESIGNER TO VERIFY MEMBER SIZES.



**DETAIL 1**  
HANDLE; 4 EACH

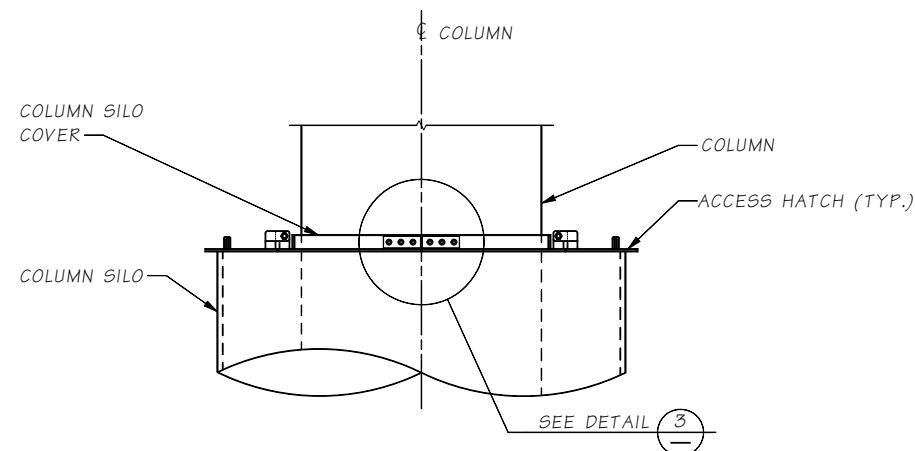


**DETAIL 2**  
HINGE

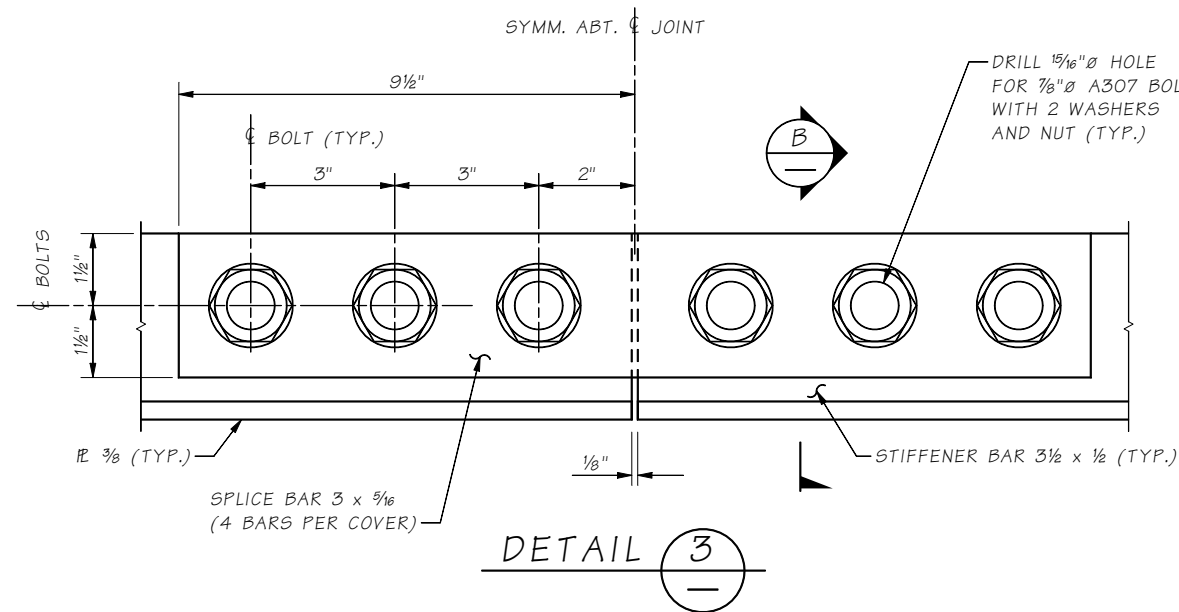


**SECTION A**

**SECTION B**



**COLUMN SILO COVER DETAIL**



**DETAIL 3**

**SILO COVER NOTES:**

1. THE CONTRACTOR SHALL FIELD MEASURE THE LOCATION OF THE COLUMN RELATIVE TO THE LOCATION OF THE SHAFT AND MODIFY THE COLUMN SILO COVER DETAILS TO PROVIDE THE MINIMUM OVERHANG BEYOND THE COLUMN SILO.
2. THE CONTRACTOR SHALL VERIFY THAT THE COVER FITS OVER THE ACTUAL COLUMN SILO.

**NOTES:**

- ① COLUMN RADIUS + 1/2"
- ② SILO RADIUS + 3" MIN.
- ③ INSTALL NUT SO THAT HATCH OPENS FREELY. TACK WELD NUT TO BOLT. APPLY TWO COATS OF GALVANIZING REPAIR PAINT FORMULA A-9-73.

Bridge Design Engr.	M:\STANDARDS\shafts and columns\COLUMN SILO COVER.MAN	REGION NO.	STATE	FED. AID PROJ. NO.	SHEET NO.	TOTAL SHEETS
Supervisor		10	WASH.			
Designed By		JOB NUMBER				
Checked By						
Detailed By						
Bridge Projects Engr.						
Prelim. Plan By						
Architect/Specialist	DATE	REVISION	BY	APPD		

**BRIDGE AND STRUCTURES OFFICE**



COLUMN SILO COVER DETAILS

BRIDGE SHEET NO.  
SHEET  
OF  
SHEETS