

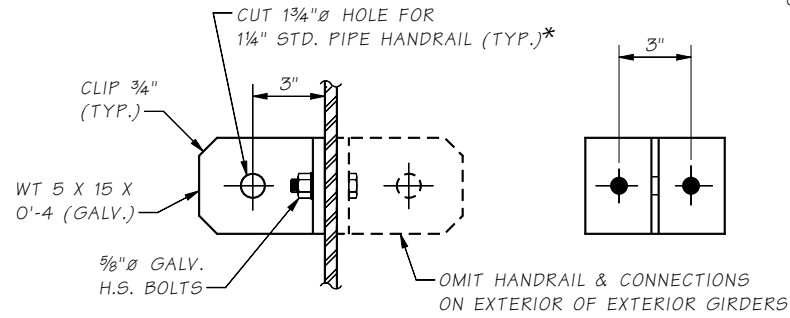
LAST REVISION 12-11-2014

SHEET

6.4-A9

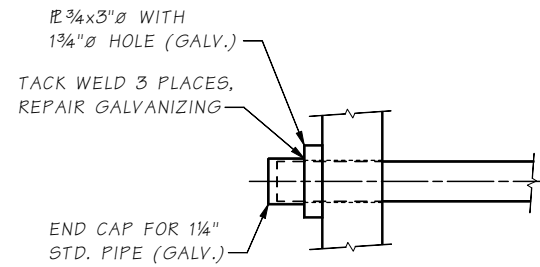
SR JOB NO.

* ENLARGE HOLES FOR CURVED GIRDERS

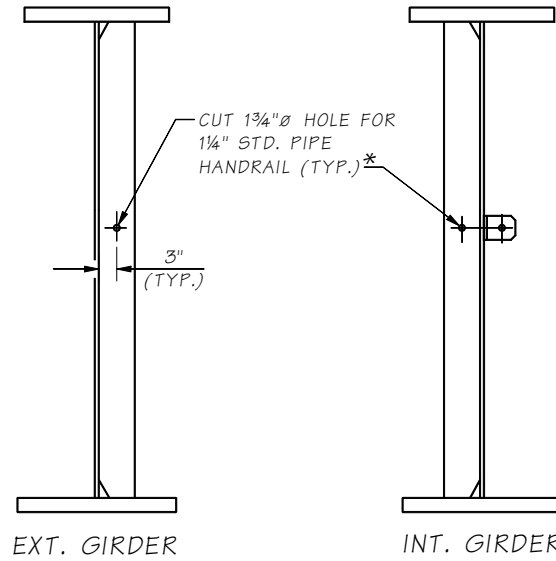


CLIP DETAIL

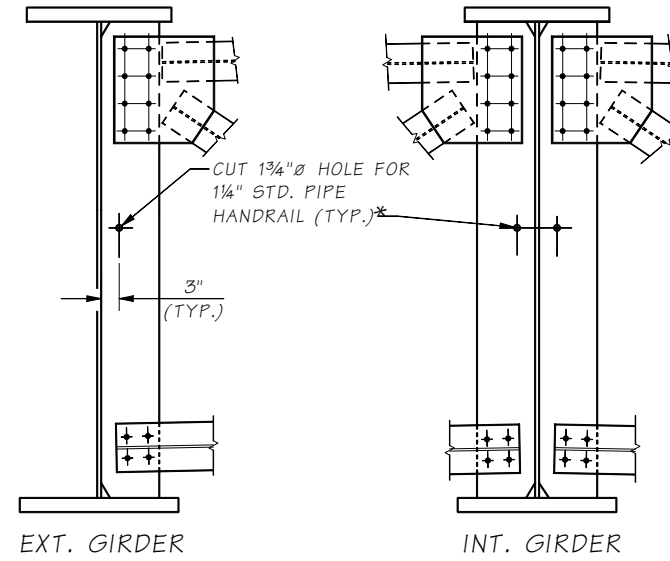
USE CLIP DETAIL(S) BETWEEN WEB STIFFENERS TO PROVIDE SUPPORT AT 8'-0" MAXIMUM SPACING.



END CONNECTION DETAIL



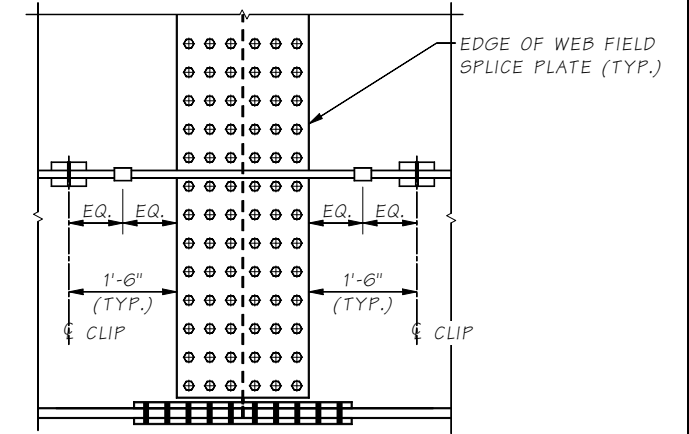
SECTION A



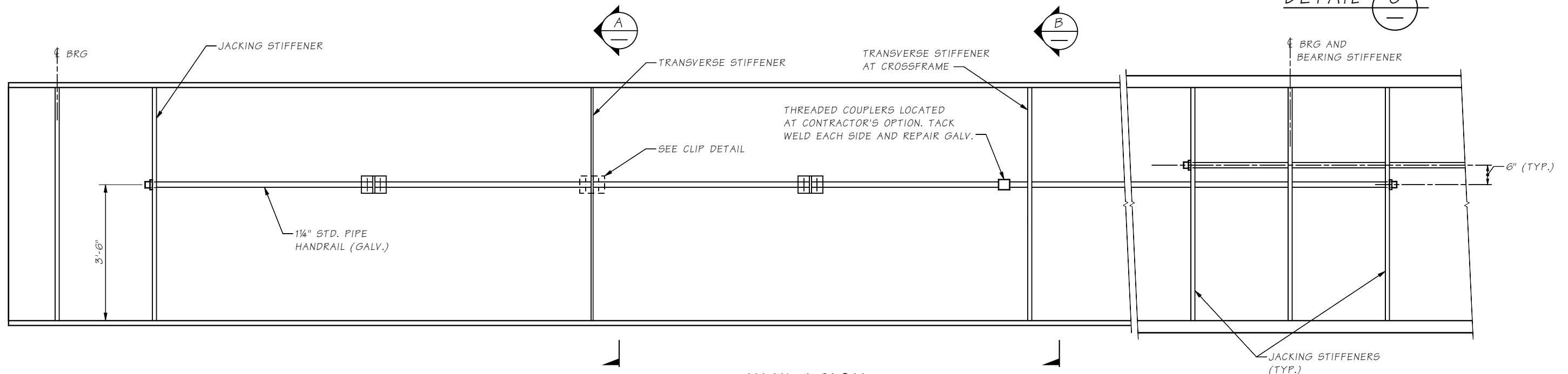
SECTION B

NOTES:

1. THE HANDRAIL SHALL BE 1 1/4" STD PIPE, ASTM A53 GR. A OR B. ALL HARDWARE SHALL BE HOT DIPPED GALVANIZED.
2. THE INTERMEDIATE CLIPS SHALL BE ASTM A 992 OR ASTM A572 GR 50, GALVANIZED AFTER FABRICATION. HIGH STRENGTH BOLTS SHALL BE ASTM A 325, GALVANIZED. NUTS SHALL BE HEAVY HEX ASTM A 563 GRADE DH. UNION COUPLERS MAY BE UTILIZED IN THE VICINITY OF GIRDER FIELD SPLICES, PROPERLY TIGHTENED AND TACK WELDED SEE **DETAIL C**.
3. FASTEN TO BRIDGE AFTER GIRDERS ARE SHOP PAINTED. OVERSPRAY FROM FIELD PAINTING IS PERMITTED.
4. HANDRAIL IS DESIGNED TO BE USED WITH SHORT LENGTH, FIXED LANYARDS. DESIGN LOADING IS 200 LB VERTICAL AND HORIZONTAL, ACTING CONCURRENTLY. ONLY ONE PERSON IS PERMITTED TO ATTACH WITHIN EACH 8 FOOT BAY.



DETAIL C



ELEVATION GIRDER WITH HANDRAIL

Bridge Design Engr.	<Window files>S64-A9		REGION NO.	STATE	FED. AID PROJ. NO.	SHEET NO.	TOTAL SHEETS
Supervisor			10	WASH.			
Designed By			JOB NUMBER				
Checked By							
Detailed By							
Bridge Projects Engr.							
Prelim. Plan By							
Architect/Specialist	DATE	REVISION	BY	APP'D			

BRIDGE AND STRUCTURES OFFICE



EXAMPLE - HANDRAIL

BRIDGE SHEET NO.
SHEET
OF
SHEETS