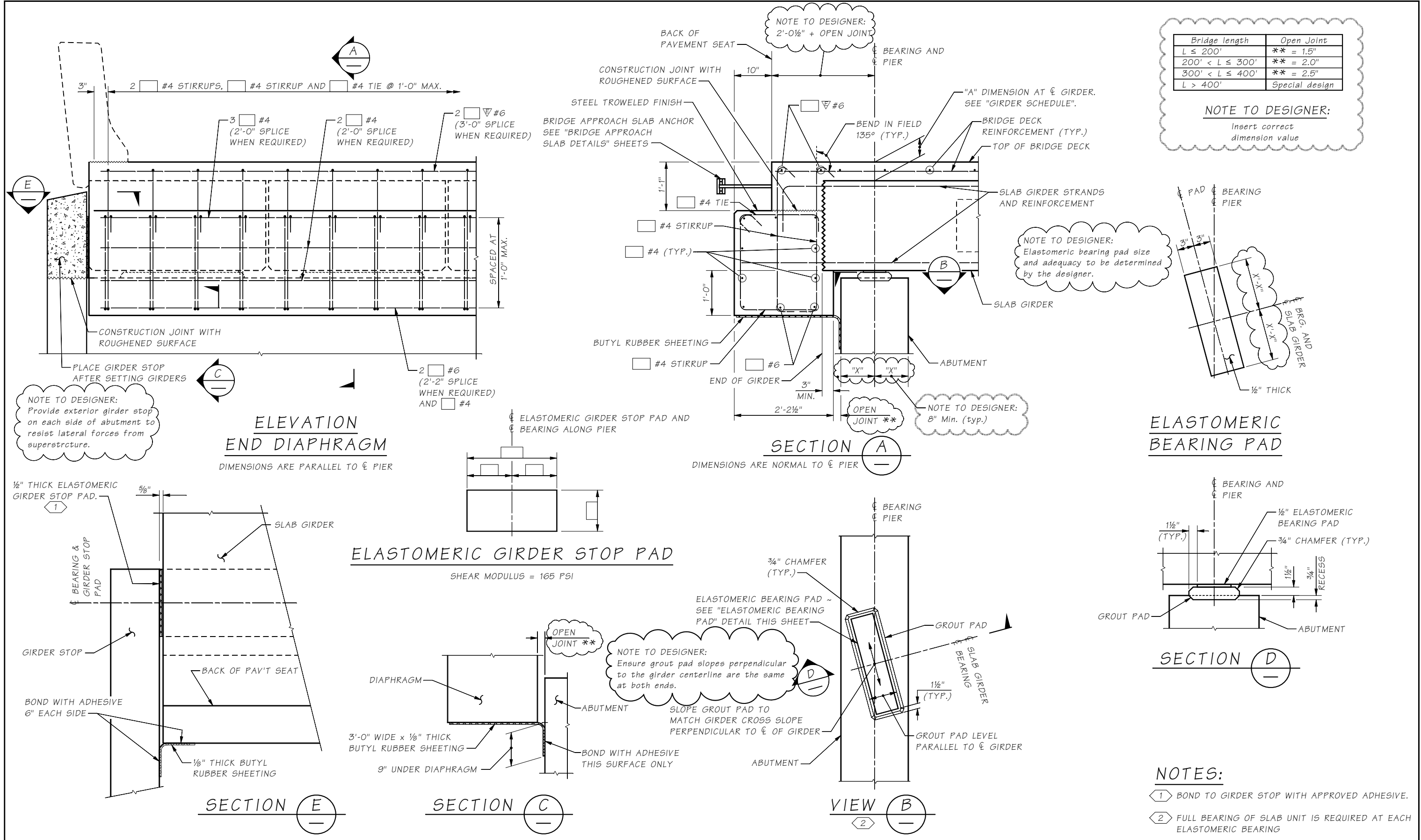


Last revised on : 03/19/2020

SR FILE NO. SHEET 5.6-A8-5



Bridge length	Open Joint
$L \leq 200'$	** = 1.5"
$200' < L \leq 300'$	** = 2.0"
$300' < L \leq 400'$	** = 2.5"
$L > 400'$	Special design

NOTE TO DESIGNER:
Insert correct dimension value

NOTE TO DESIGNER:
Elastomeric bearing pad size and adequacy to be determined by the designer.

NOTE TO DESIGNER:
8" Min. (typ.)

NOTE TO DESIGNER:
2'-0 1/2" + OPEN JOINT

NOTE TO DESIGNER:
Ensure grout pad slopes perpendicular to the girder centerline are the same at both ends.

NOTE TO DESIGNER:
Provide exterior girder stop on each side of abutment to resist lateral forces from superstructure.

Bridge Design Engr.	M:\STANDARDS\Girders\Flat Slab\SLAB GIRDER END DIAPHRAGM.MAN				
Supervisor		REGION NO.	STATE	FED. AID PROJ. NO.	SHEET NO.
Designed By		10	WASH.		TOTAL SHEETS
Checked By		JOB NUMBER			
Detailed By					
Bridge Projects Engr.					
Prelim. Plan By					
Architect/Specialist	DATE	REVISION	BY	APPD	

BRIDGE AND STRUCTURES OFFICE		STANDARD PRESTRESSED CONCRETE GIRDERS	BRIDGE SHEET NO.
		SLAB GIRDER END DIAPHRAGM	SHEET OF SHEETS