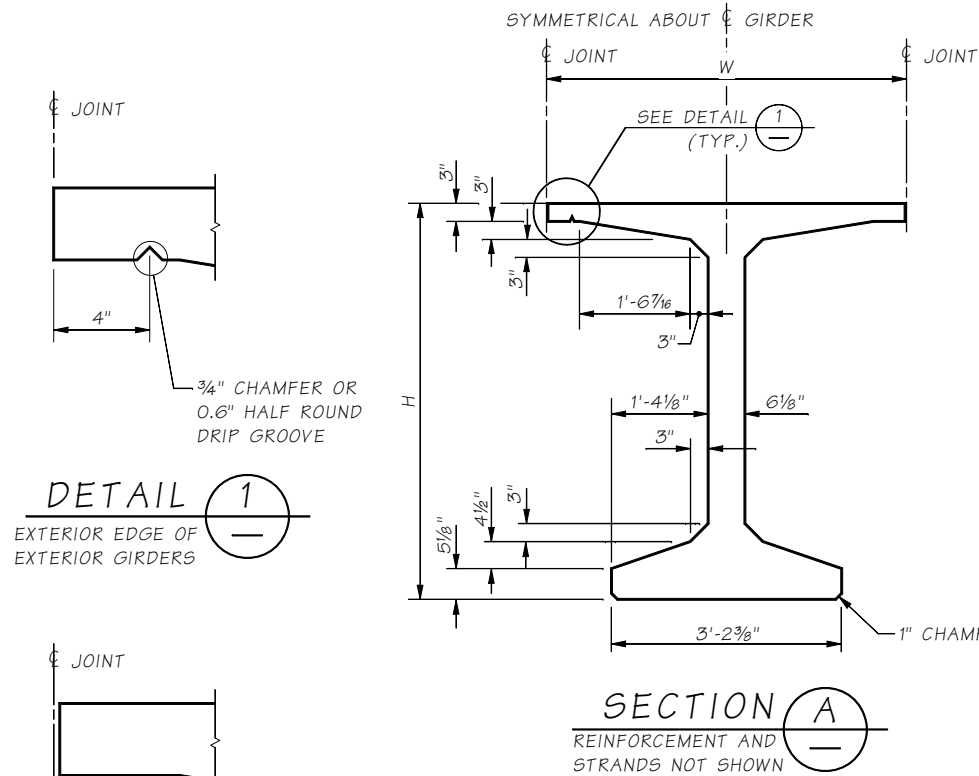
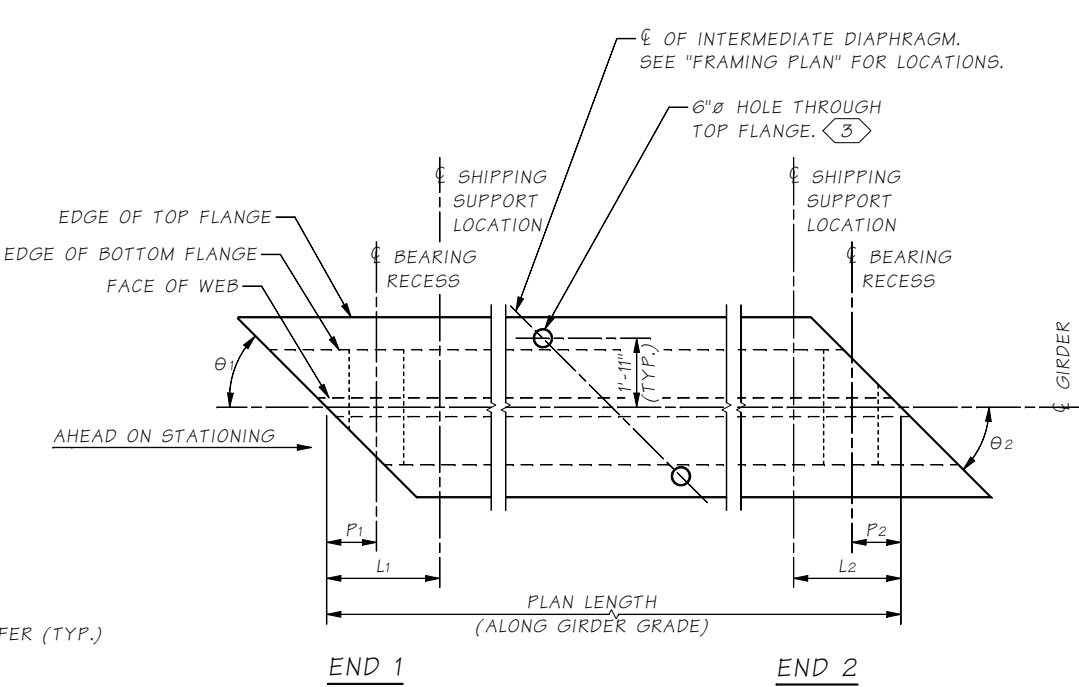


Last revised on : 07/10/2020

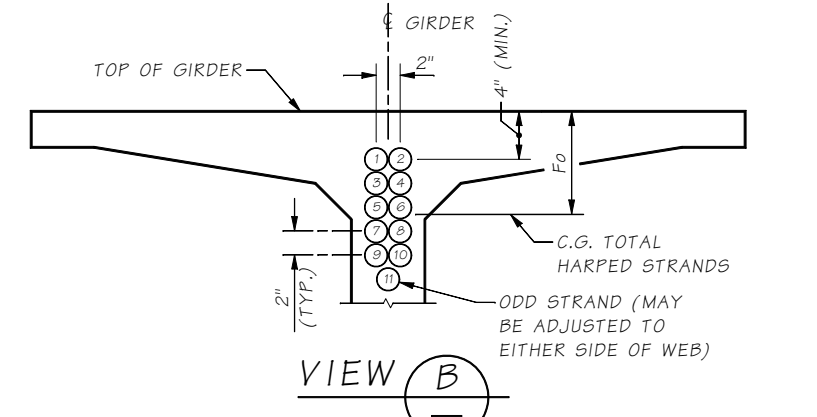
SR FILE NO. 5.6-A5-2 SHEET



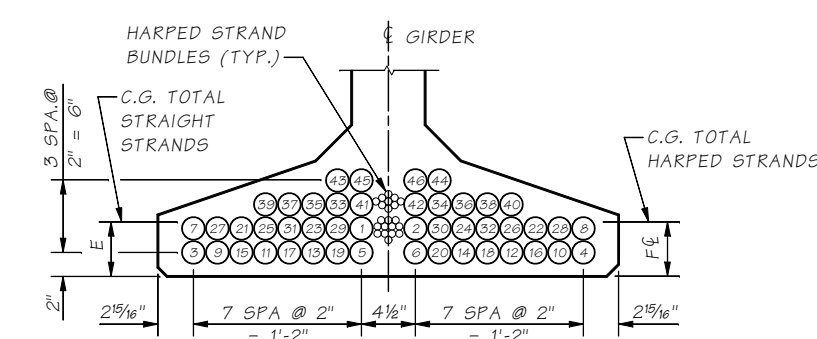
SECTION A
REINFORCEMENT AND STRANDS NOT SHOWN



GIRDER PLAN



VIEW B



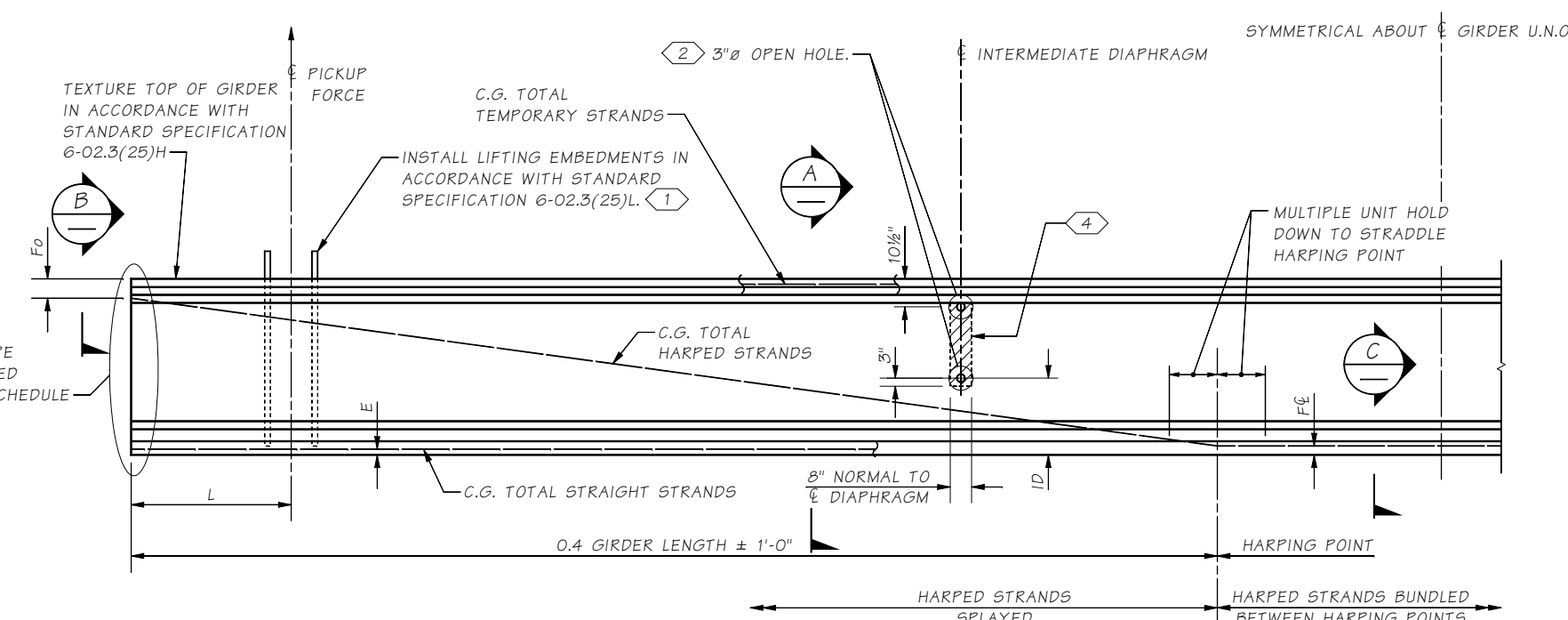
SECTION C



DETAIL 1
ALL OTHER LOCATIONS



DETAIL 1
EXTERIOR EDGE OF EXTERIOR GIRDERS



GIRDER ELEVATION

GIRDER SERIES	H GIRDER HEIGHT	ID PARTIAL DEPTH INT. DIAPHRAGM	ID FULL DEPTH INT. DIAPHRAGM
WF36TDG	3'-0"	1'-2 1/8"	1'-2 1/8"
WF42TDG	3'-6"	1'-6"	1'-2 1/8"
WF50TDG	4'-2"	1'-9 1/2"	1'-2 1/8"
WF58TDG	4'-10"	2'-3"	1'-2 1/8"
WF66TDG	5'-6"	2'-4 3/4"	1'-2 1/8"
WF74TDG	6'-2"	2'-8"	1'-2 1/8"
WF83TDG	6'-10 3/8"	2'-1 3/8"	1'-2 1/8"
WF95TDG	7'-10 1/2"	3'-1 1/2"	1'-2 1/8"
WF100TDG	8'-4"	2'-8"	1'-2 1/8"

NOTES:

- ① REMOVE TO TOP OF GIRDER AFTER ERECTION.
- ② ADJUST HOLE LOCATION VERTICALLY TO MISS HARPED STRANDS. OMIT HOLES AND PLACE INSERTS ON THE INTERIOR FACE OF EXTERIOR GIRDERS. PLACE HOLES AND INSERTS PARALLEL TO DIAPHRAGM CENTERLINE. INSERTS SHALL BE 1" MEADOWBURKE MX-3 HI-TENSILE, 1" MEADOWBURKE FX-19 FERRULE INSERT, 1" x 5 1/2" WILLIAMS F22 OPEN FERRULE INSERT, 1" x 4 5/8" DAYTON-SUPERIOR F-62 FLARED THIN SLAB FERRULE INSERT OR APPROVED EQUAL.
- ③ OMIT ON EXTERIOR SIDE OF EXTERIOR GIRDER. ADJUST REINFORCEMENT AS REQUIRED (TYP.)
- ④ APPLY APPROVED RETARDANT FOR 1/4" ETCH TO SIDE FORMS OR 1/4" ROUGHENED SURFACE TREATMENT BY APPROVED MECHANICAL METHOD. OMIT AT EXTERIOR FACE OF EXTERIOR GIRDERS.

Bridge Design Engr.		M:\STANDARDS\Girders\WFTDG\WFTD GIRDER DETAILS 2 OF 5.MAN		REGION NO.	STATE	FED. AID PROJ. NO.	SHEET NO.	TOTAL SHEETS
Supervisor		10	WASH					
Designed By		JOB NUMBER						
Checked By								
Detailed By								
Bridge Projects Engr.								
Prelim. Plan By								
Architect/Specialist	DATE	REVISION	BY	APPD				

Fri Jul 10 08:16:52 2020

BRIDGE AND STRUCTURES OFFICE



STANDARD PRESTRESSED CONCRETE GIRDERS
WF THIN DECK GIRDER
DETAILS 2 OF 5

BRIDGE SHEET NO.
SHEET
OF
SHEETS