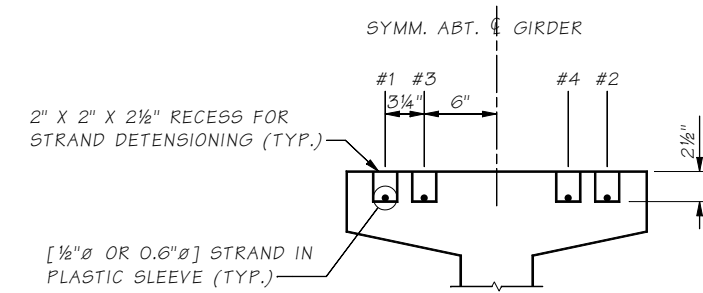
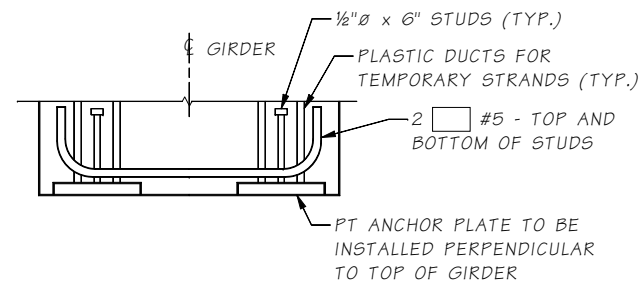


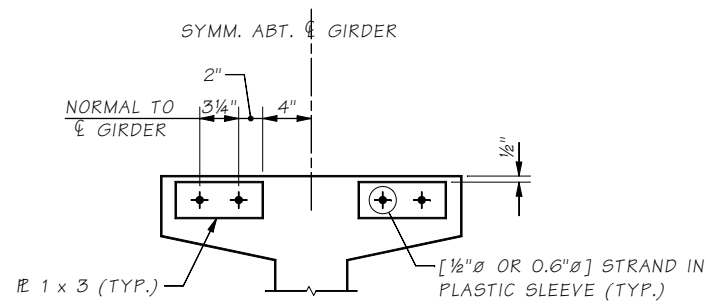
PLAN  
PRETENSIONED TEMPORARY  
TOP STRANDS  
①



SECTION A

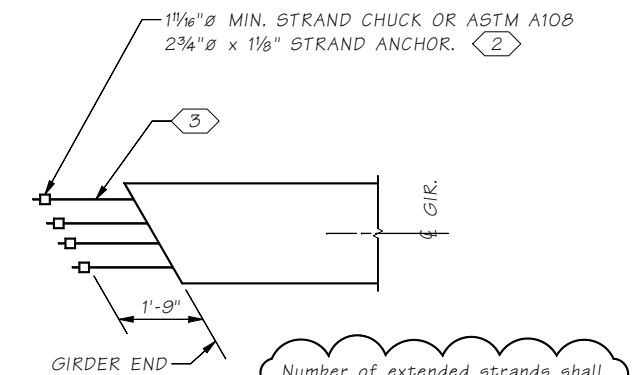


PLAN  
TEMPORARY STRAND  
POST-TENSIONED ALTERNATE



END VIEW  
TEMPORARY STRAND  
POST-TENSIONED ALTERNATE

ADJUST [G4] BARS TO  
CLEAR THE STEEL PLATE



STRAND EXTENSION DETAIL

Number of extended strands shall be determined by the designer.

NOTES:

- ① POST-TENSIONED TEMPORARY TOP STRANDS SIMILAR, EXCEPT 10'-0" LENGTH OF BONDING OCCURS AT ONE END ONLY. THE OPPOSING END IS ANCHORED WITH PLATES AND STRAND CHUCKS. SEE "GIRDER SCHEDULE" FOR NUMBER OF TEMPORARY STRANDS REQUIRED.
- ② ANCHOR STRAND WITH WEDGES BEFORE GIRDER ERECTION. VERIFY WEDGES ARE SEATED TIGHTLY IMMEDIATELY BEFORE PLACING DIAPHRAGM CONCRETE.
- ③ EXTEND STRAIGHT STRANDS (3) THROUGH (6) AT END HEAD ON STATION. EXTEND STRAIGHT STRANDS (7) THROUGH (10) AT END BACK ON STATION.

Last revised: 07/07/2020

JOB NO. 3 SHEET

5.6-A3-7

Bridge Design Engr.	M:\STANDARDS\Girders\W58G\W58G3.man				REGION NO.	STATE	FED. AID PROJ. NO.	SHEET NO.	TOTAL SHEETS
Supervisor					10	WASH.			
Designed By					JOB NUMBER				
Checked By									
Detailed By									
Bridge Projects Engr.									
Prelim. Plan By									
Architect/Specialist	DATE	REVISION	BY	APPD					

BRIDGE  
AND  
STRUCTURES  
OFFICE



STANDARD  
PRESTRESSED CONCRETE GIRDERS

W58G GIRDER  
DETAILS 3 OF 3

BRIDGE SHEET NO.  
SHEET  
OF  
SHEETS