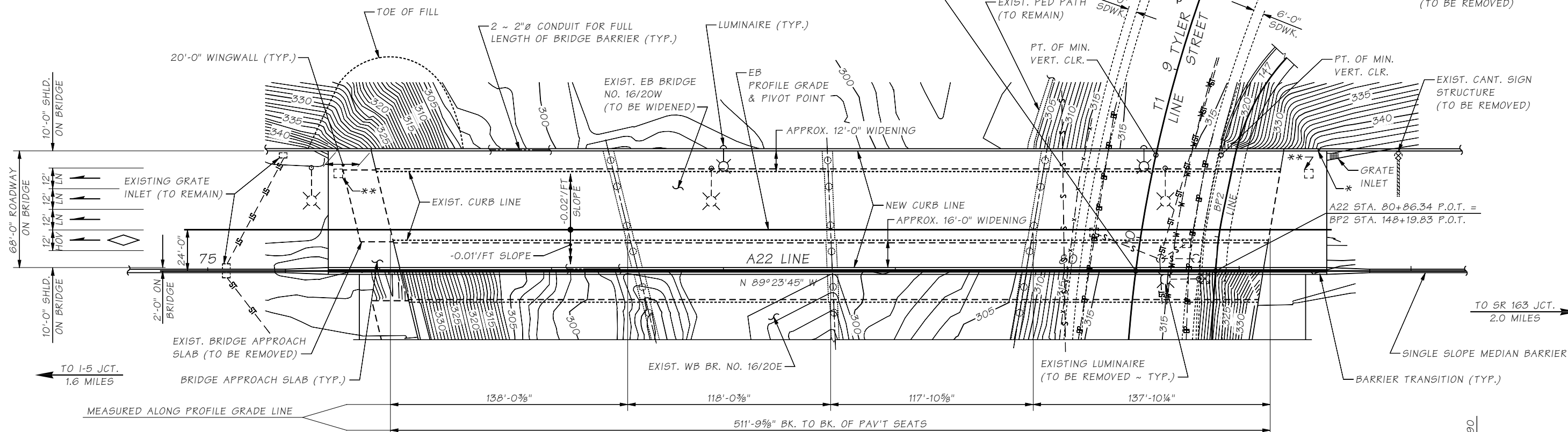


CURVE DATA

P.I. STATION	Δ	RADIUS	TANGENT	LENGTH	BK. TANGENT BRG.
T1 10+51.02	29°00'00" LT.	800.00'	206.90'	404.92'	N 20°33'04" E
BP2 146+85.44	101°23'40" LT.	125.00'	152.71'	221.21'	S 66°09'27" E
BP2 147+99.54	07°43'32" LT.	200.00'	13.50'	26.97'	N 12°26'53" E
BP2 148+39.16	01°13'18" LT.	550.00'	5.86'	11.73'	N 04°43'22" E

SEC. 12, T.20N., R.2E., W.M.
CITY OF TACOMA

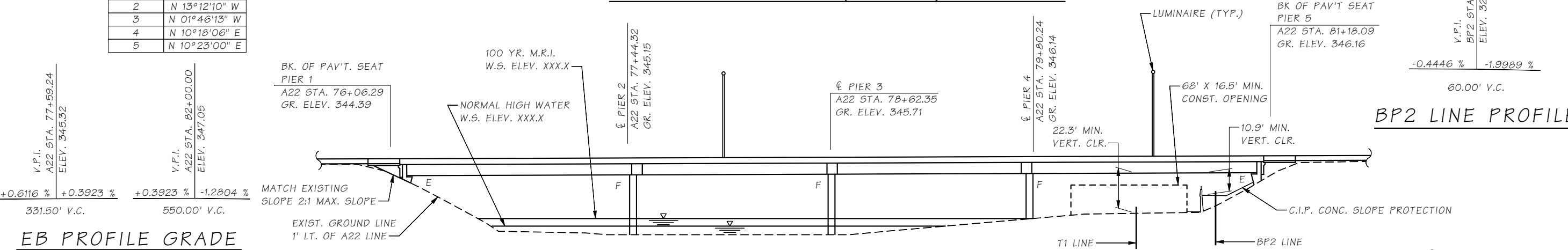
SR 16



FIELD MEASURED BEARINGS

PIER	BEARING
1	N 13°05'04" W
2	N 13°12'10" W
3	N 01°46'13" W
4	N 10°18'06" E
5	N 10°23'00" E

PLAN ~ EB BRIDGE (16/20W) WIDENING



EB PROFILE GRADE

ELEVATION ~ EB BRIDGE (16/20W) WIDENING

P.C. GIRDERS (W74G) WIDENING CONTINUOUS FOR LIVE LOAD

LOADING : HS-25 OR TWO 24 K AXLES @ 4' CTR'S

PLAN APPROVED BY:
BRIDGE AND STRUCTURES ENGINEER
PROJECT DEVELOPMENT ENGINEER

DATUM
NAVD 1988

REFERENCE LINE ELEVATION 290.0
NOTE: 500 YR MRI W.S. ELEV. XXX.X

SEE STD. PLAN A-50.20-01 FOR EMBANKMENT WIDENING AT BRIDGE ENDS. GRADE ELEVATIONS SHOWN ARE FINISH GRADES 24'-0" LT. OF A22 LINE AND ARE EQUAL TO THE PROFILE GRADE.

BRIDGE AND STRUCTURES OFFICE



BRIDGE DESIGN ENGR.	M:\BRIDGELIB\BDM\Chapter 2\window files\S2B7.wnd	STATE	FED. AID PROJ. NO.	SHEET NO.	TOTAL SHEETS
Supervisor		10 WASH.			
Designed By		JOB NUMBER			
Checked By					
Detailed By					
Bridge Projects Engr.					
Prelim. Plan By					
Architect/Specialist	DATE	REVISION	BY	APP'D	

BRIDGE WITH APPROACH FILLS W74G P.C. GIRDERS "A" DIMENSION = 11 1/2" (PRELIMINARY ~ NOT FOR DESIGN) CAST-IN-PLACE CONC. SHALL BE 4000 PSI DECK PROTECTIVE SYSTEM 1 (EPOXY COATED REBARS) POINT OF MINIMUM VERTICAL CLEARANCE: A22 STA. 80+89.0 (67.0' LT) = A22 STA. 80+51.6 (67.4' LT) = T1 STA. 9+51.0 (4) COAST GUARD LIAISON COAST GUARD PERMIT NOT REQ'D PERMIT TARGET DATE LAST REVISION: 12/1/2016 2-B-7 SR

PROJ. NO. X1200 ~ OLYMPIC REGION ~ SR 16 ~ UNION AVE. TO PEARL ST. ~ SNAKE LAKE NORTH BRIDGE NO. 16/20W WIDENING