

PT. OF MIN. VERT. CLR.
 NE 129TH STA. 9+91.32 (23.0' LT.) =
 L STA. 360+57.63 (25.1' LT.)
 NE 129TH STA. 10+84.27 (23.0' LT.) =
 L STA. 360+34.10 (87.4' RT.)

LAST REVISION: 12/1/2016

BRIDGE WITH APPROACH FILLS
 4'-5" DEEP CONCRETE BOX GIRDER SUPERSTRUCTURE
 DECK PROTECTIVE SYSTEM 1 (EPOXY COATED REBAR)
 CAST-IN-PLACE CONCRETE SHALL BE CLASS 4000

SHEET NO. 2-B-4

CURVE DATA

P.I. STATION	Δ	RADIUS	TANGENT	LENGTH	BK. TANGENT BRG.
L 347+80.00	37°42'00" LT.	4590.00'	1567.03'	3020.17'	N 21°44'52" E

SEC. 26, T.3N., R.1E., W.M.
 CLARK COUNTY

SR 5

NOTE:
 EXIST. STORM DRAIN PIPE, MANHOLES
 AND CATCH BASINS, TO BE ABANDONED
 UNLESS OTHERWISE NOTED.

EXISTING OVERHEAD
 POWER LINE (TO REMAIN)
 EXISTING FENCE
 (TO BE REMOVED)
 PROFILE GRADE
 & PIVOT POINT
 R/W

NE 129TH STA. 8+35.19 =
 NE 18TH STA. 10+00

NE 18TH STA. 10+42.54 P.C.

P.I.V.C.
 129TH STA. 10+50
 ELEV. 213.70
 +0.5357%
 -5.8696%
 360' V.C.

**NE 129TH LINE
 PROFILE**

JUNCTION BOX
 (TYP. 2 LOCATIONS)

BK. OF PAV'T SEAT
 PIER 1
 NE 129TH STA. 9+20.00
 GR. ELEV. 212.78

BRIDGE RAILING TYPE
 CHAIN LINK FENCE

EXISTING GROUND LINE
 26.50' RT. OF NE 29TH LINE

1:2 MAX. SLOPE (TYP.)

CONC. BARRIER TYPE 4

REFERENCE LINE
 ELEVATION 170.00

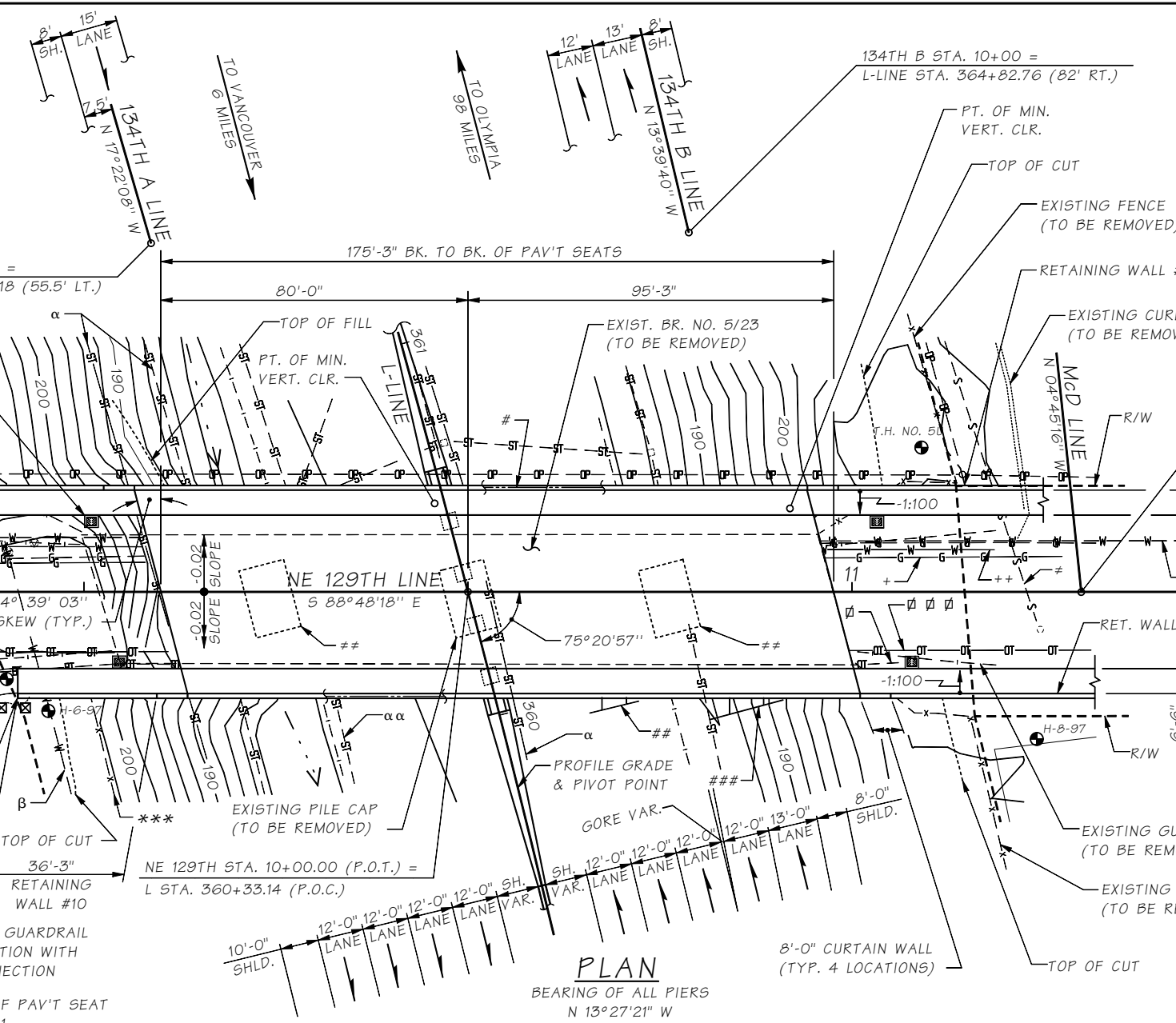
DATUM
 N.A.V.D. OF 1988

PLAN APPROVED BY:

J. A. Weigel 04/01
 BRIDGE AND STRUCTURES ENGINEER
 Mike Clark 01/01
 PROJECT DEVELOPMENT ENGINEER

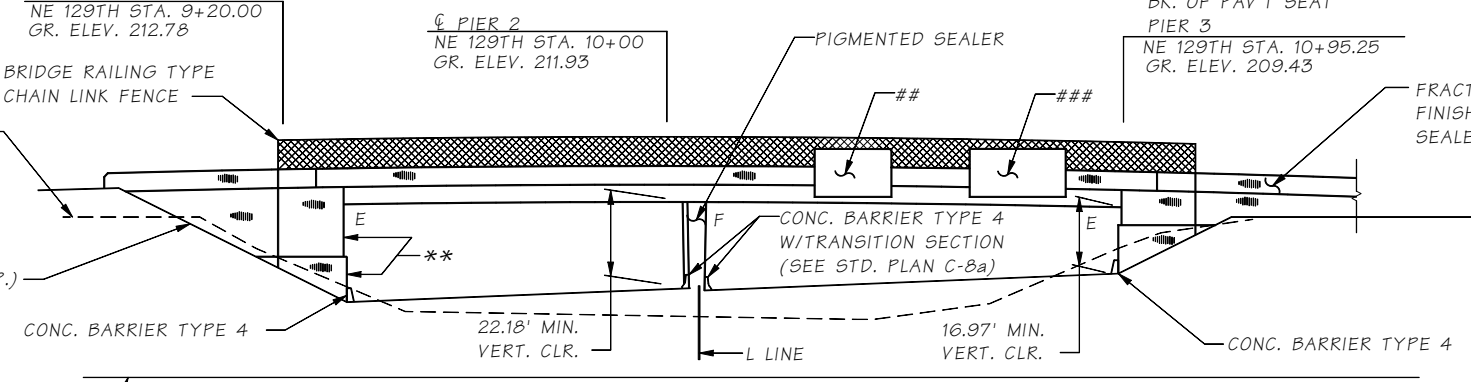
BRIDGE DESIGN ENGR.	M:\BRIDGELIB\BDM\Chapter 2\window files\S2B4.wnd	STATE	FED. AID PROJ. NO.	SHEET NO.	TOTAL SHEETS
Supervisor		10 WASH.			
Designed By		JOB NUMBER			
Checked By					
Detailed By					
Bridge Projects Engr.					
Prelim. Plan By					
Architect/Specialist	DATE	REVISION	BY	APP'D	

Wed Nov 30 15:18:17 2016



PLAN

BEARING OF ALL PIERS
 N 13° 27' 21" W



ELEVATION

GRADE ELEVATIONS SHOWN ARE FINISH GRADES AT TOP OF ROADWAY SLAB ON NE 129TH LINE AND ARE EQUAL TO PROFILE GRADE.
 SEE STD. PLAN H-9 FOR EMBANKMENT DETAILS AT SOUTHWEST END OF BRIDGE.

**PRECAST POST-TENSIONED
 CONCRETE BOX GIRDER
 LOADING: HL-93**

BRIDGE AND STRUCTURES OFFICE



PRELIMINARY PLAN

BRIDGE SHEET NO.	1
SHEET	OF
SHEETS	

PROJ. NO. 0602 ~ SR 5 ~ SOUTH WEST REGION ~ SALMON CREEK TO SR 205 ~ SR 5 ~ NE 129TH ST. BR. NO. 5/23 REPLACEMENT