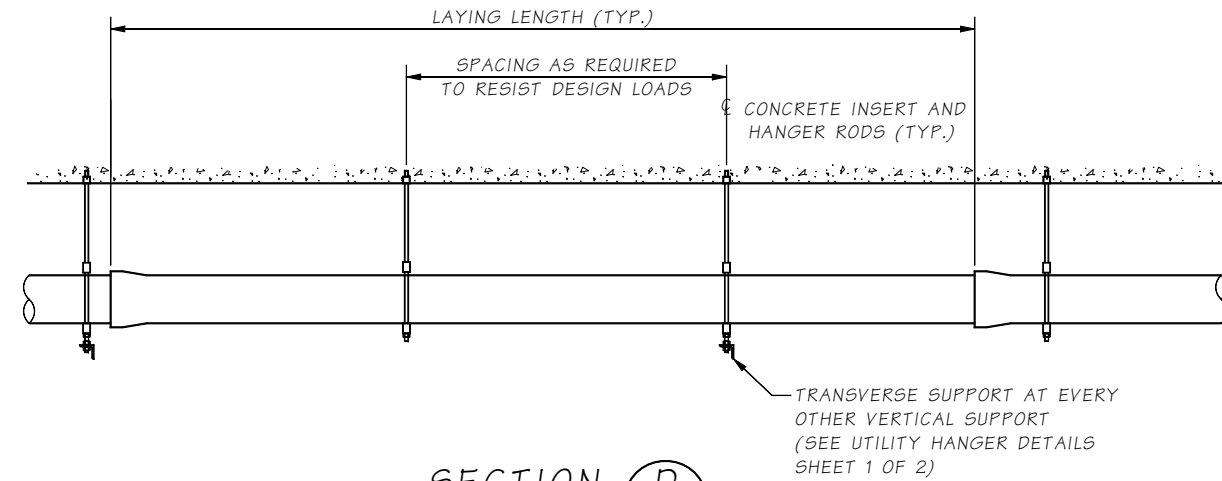
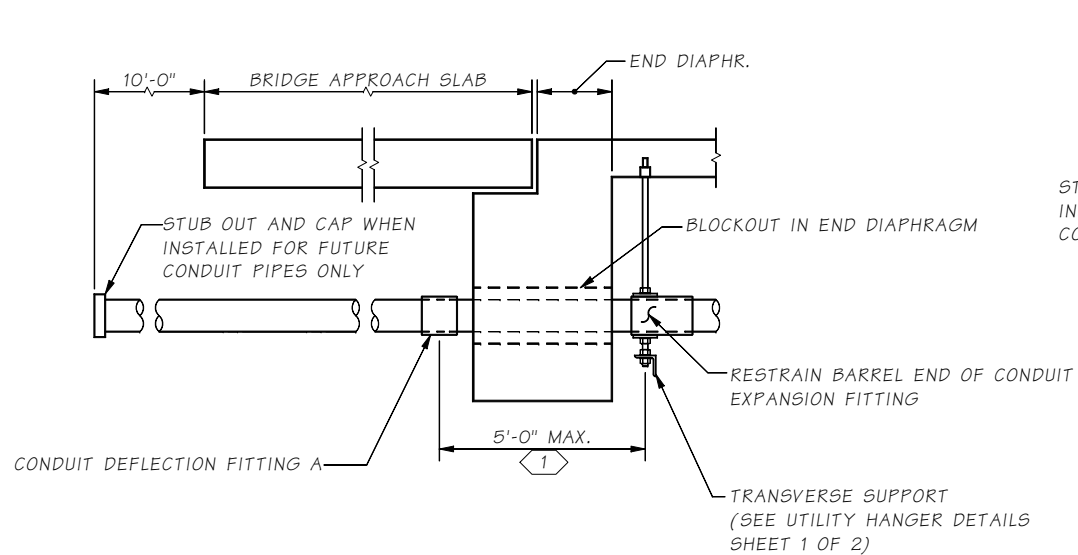


SECTION **D**  
RGS OR PVC CONDUIT



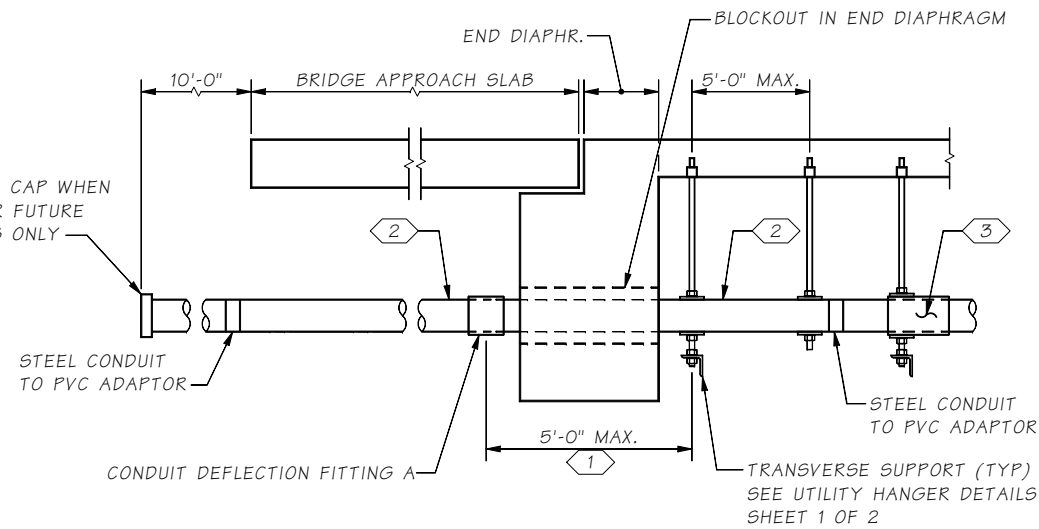
SECTION **D**  
UTILITIES OTHER THAN RGS OR PVC CONDUITS

NOTE TO DESIGNER:  
COORDINATE WITH UTILITY ENGINEER FOR CONDUIT PLACEMENT DETAILS AT ABUTMENTS FOR UTILITIES OTHER THAN RGS OR PVC.



UTILITY CONDUIT  
PLACEMENT DETAIL ~ RGS

SEE TRAFFIC BARRIER SHEETS FOR CONDUIT DEFLECTION FITTING A DETAIL.



UTILITY CONDUIT  
PLACEMENT DETAIL ~ PVC

**GENERAL NOTES:**

1. SET POSITION OF EXPANSION FITTING BASED ON MANUFACTURER RECOMMENDATIONS AND TEMPERATURE AT TIME OF INSTALLATION.
2. EXPANSION FITTINGS SHALL BE INSTALLED EVERY 100'-0" MAX, AND SHALL ACCOMMODATE 5.1 INCHES OF MOVEMENT. THE DESIGN TEMPERATURE RANGE IS 125 DEGREES (-15° TO 110°).
3. SEE TRAFFIC BARRIER SHEETS FOR CONDUIT DEFLECTION FITTING A DETAIL.

**NOTES:**

- ① DIMENSION MAY BE INCREASED IF REQUIRED FOR GEOMETRY
- ② 10'-0" STEEL CONDUIT SECTION BETWEEN CONDUIT DEFLECTION FITTING A AND PVC CONDUIT ADAPTOR
- ③ RESTRAIN BARREL END OF CONDUIT EXPANSION FITTING

Last revised on : 03/31/2020

1 SHEETS

10.8-A1-2

Bridge Design Engr.	M:\STANDARDS\Utilities\Working and New Versions\Utility Hanger Details 2.MAN					REGION NO.	STATE	FED. AID PROJ. NO.	SHEET NO.	TOTAL SHEETS
Supervisor						10	WASH.			
Designed By						JOB NUMBER				
Checked By										
Detailed By										
Bridge Projects Engr.										
Prelim. Plan By										
Architect/Specialist	DATE	REVISION	BY	APPD						

BRIDGE AND STRUCTURES OFFICE



UTILITY INSTALLATION GUIDELINE DETAILS

UTILITY HANGER DETAILS

BRIDGE SHEET NO.  
SHEET  
OF  
SHEETS