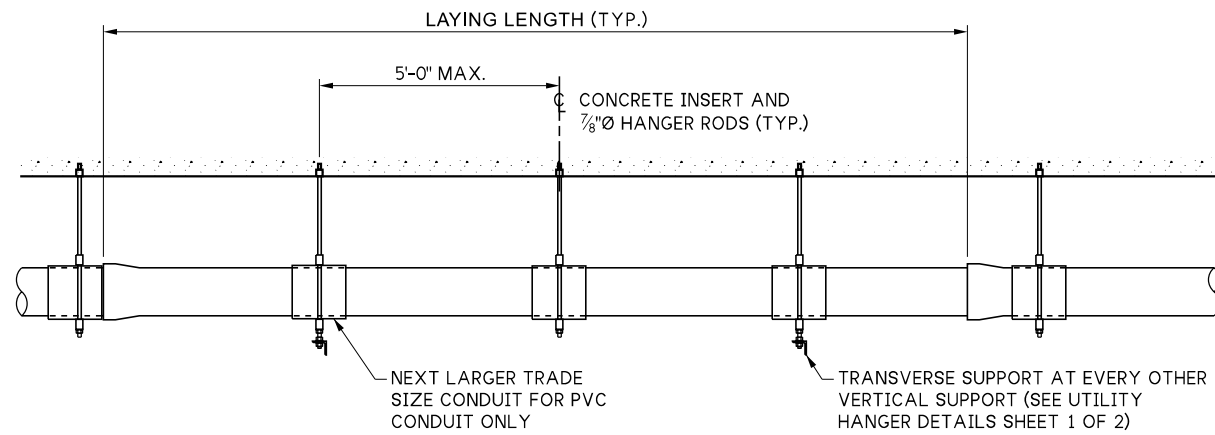
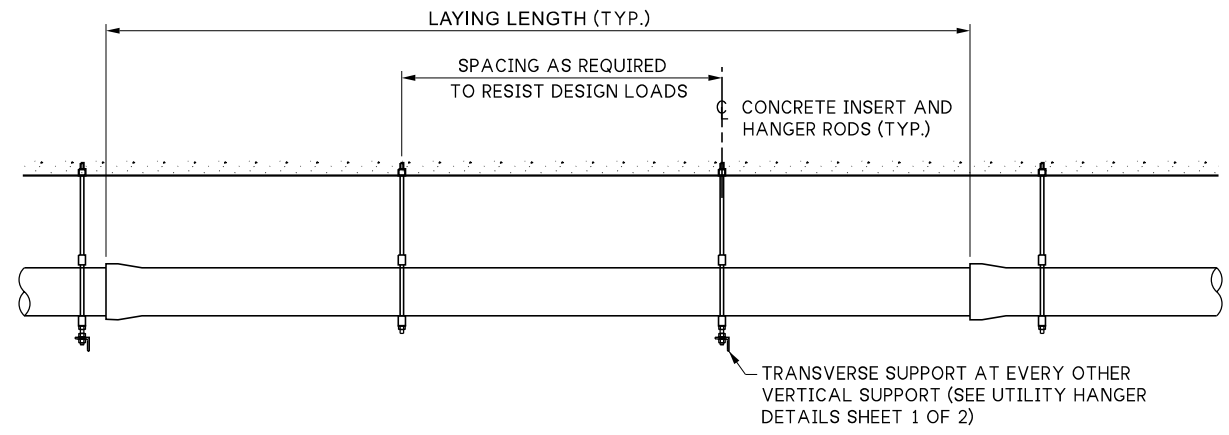


LAST REVISED: 05/22/2025

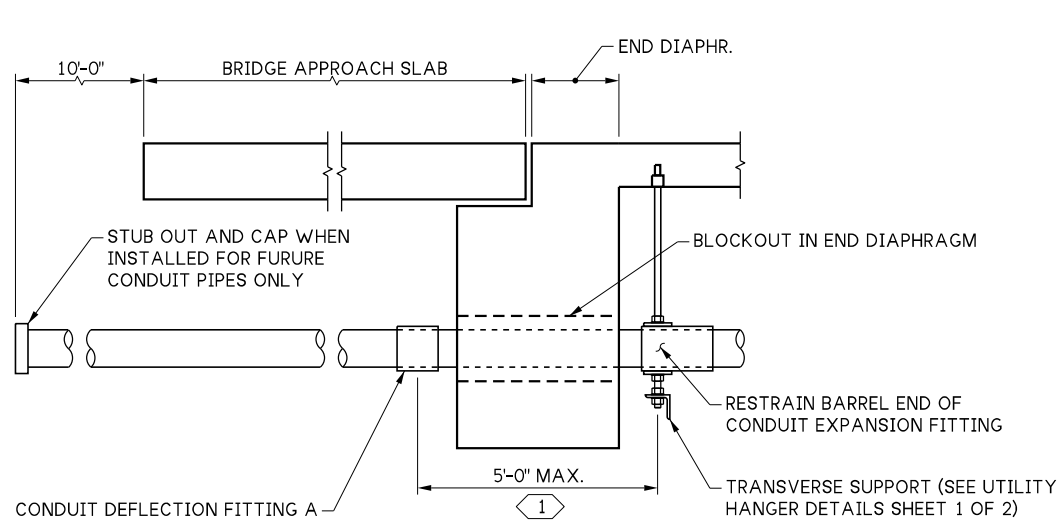


**SECTION D**  
RGS OR PVC CONDUIT



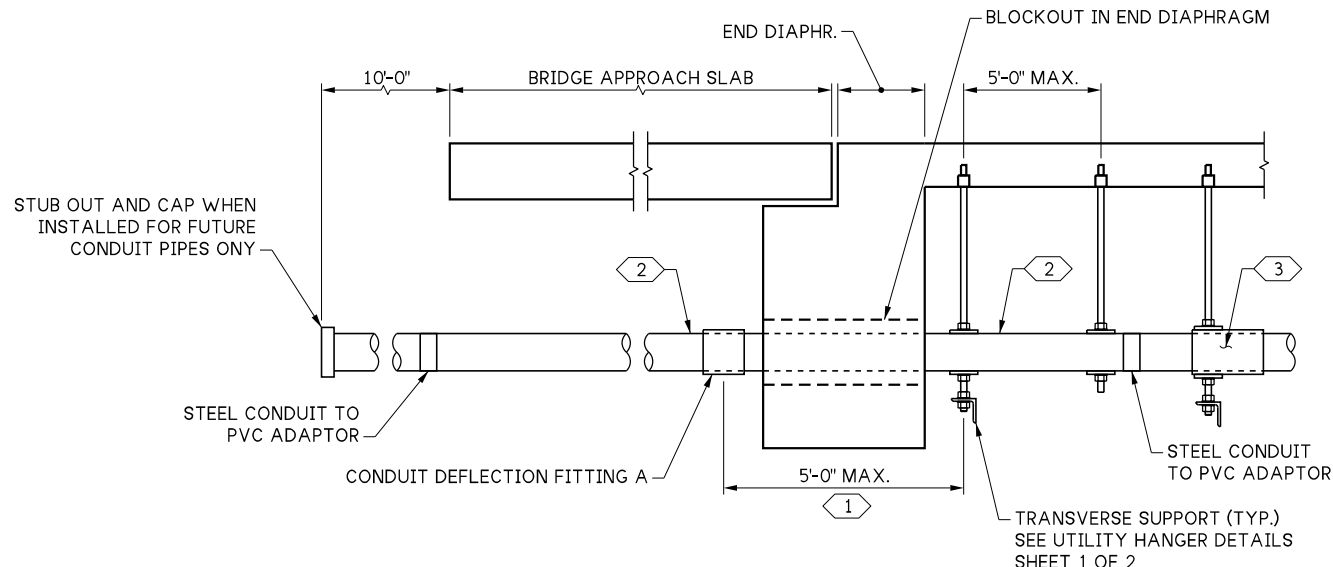
**SECTION D**  
UTILITIES OTHER THAN RGS OR PVC CONDUITS

**NOTES TO DESIGNER:**  
 1. COORDINATE WITH UTILITY ENGINEER FOR CONDUIT PLACEMENT DETAILS AT ABUTMENTS FOR UTILITIES OTHER THAN RGS OR PVC.  
 2. CONDUIT USAGE FOR WSDOT SHALL BE RGS.



**UTILITY CONDUIT PLACEMENT DETAIL ~ RGS**

SEE TRAFFIC BARRIER SHEETS FOR CONDUIT DEFLECTION FITTING DETAIL.



**UTILITY CONDUIT PLACEMENT DETAIL ~ PVC**

**GENERAL NOTES:**

1. SET POSITION OF EXPANSION FITTING BASED ON MANUFACTURER RECOMMENDATIONS AND TEMPERATURE AT TIME OF INSTALLATION.
2. EXPANSION FITTINGS SHALL BE INSTALLED EVERY 100'-0" MAX. AND SHALL ACCOMMODATE 5.1 INCHES OF MOVEMENT. THE DESIGN TEMPERATURE RANGE IS 125 DEGREES (-15° TO 110°).
3. SEE TRAFFIC BARRIER SHEETS FOR CONDUIT DEFLECTION FITTING A DETAIL.

**KEY NOTES:**

- ① DIMENSION MAY BE INCREASED IF REQUIRED FOR GEOMETRY.
- ② 10'-0" STEEL CONDUIT SECTION BETWEEN CONDUIT DEFLECTION FITTING A AND PVC CONDUIT ADAPTOR.
- ③ RESTRAIN BARREL END OF CONDUIT EXPANSION FITTING.

10.8-A 1-2

FILE NAME	10.8-A 1-2_Utility Hanger Details 2 of 2.dgn			
BRIDGE DES. ENG.				
BRIDGE PROJ. ENG.				
SUPERVISOR				
DESIGNED BY				
CHECKED BY				
ENTERED BY				
PRELIM. PLAN BY				
ARCH. / SPEC.				
	REVISION	DATE	BY	

REGION NO.	STATE
10	WASH
JOB NUMBER	
CONTRACT NO.	



SEE CERTIFICATION SHEET DATE	SEE CERTIFICATION SHEET DATE
STAMP BOX	STAMP BOX

STANDARD DESIGN DRAWINGS UTILITY HANGERS
UTILITY HANGER DETAILS 2 OF 2

PLAN REF NO
SHEET OF SHEETS