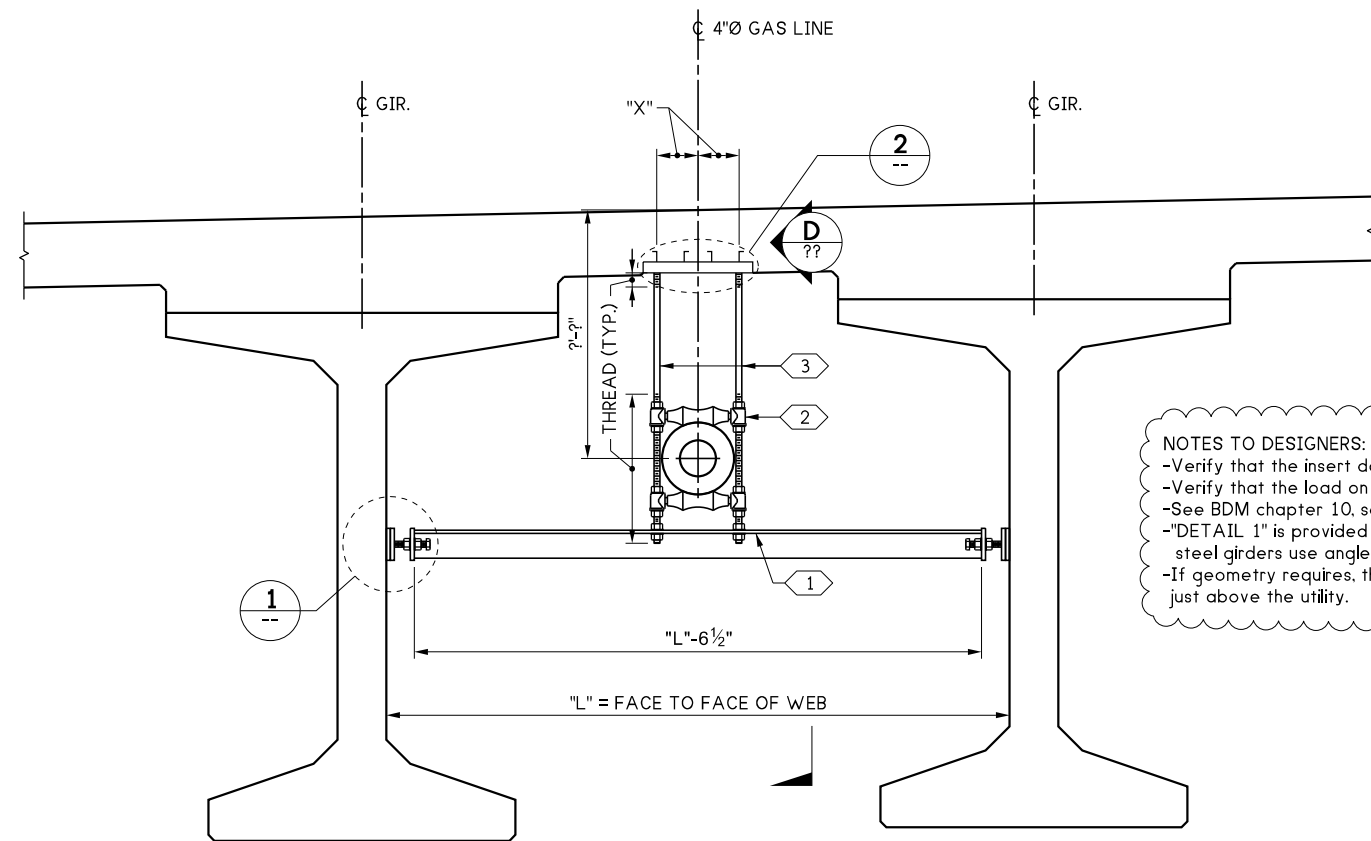
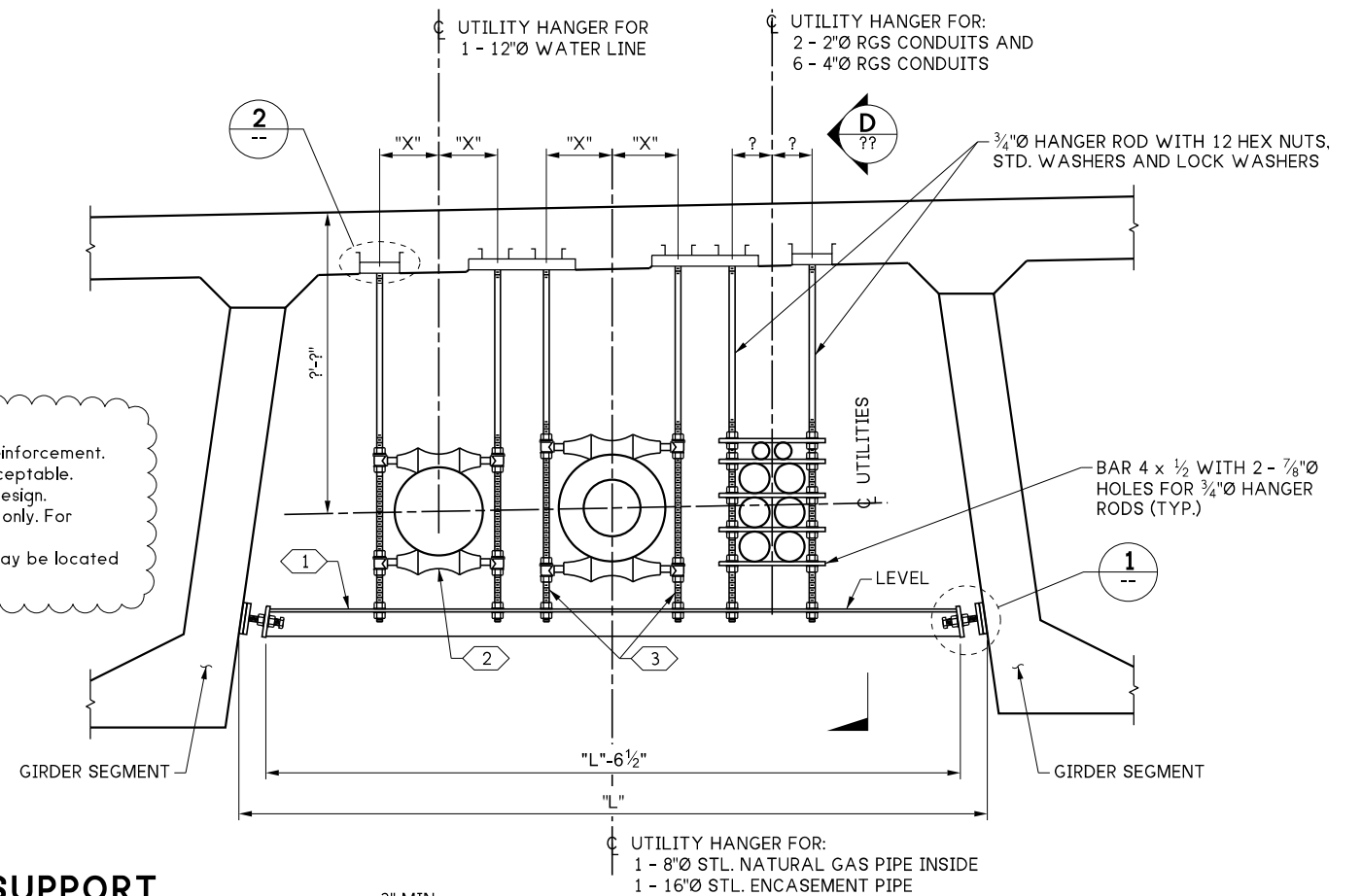


LAST REVISED: 05/22/2025

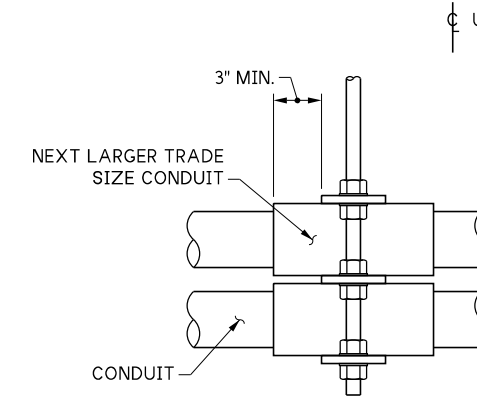


NOTES TO DESIGNERS:
 -Verify that the insert does not interfere with reinforcement.
 -Verify that the load on the insert and rod is acceptable.
 -See BDM chapter 10, section 10.8.6 for insert design.
 -"DETAIL 1" is provided for prestressed girders only. For steel girders use angle iron bolted connections.
 -If geometry requires, the transverse support may be located just above the utility.

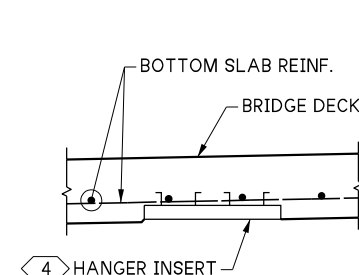


HANGER UTILITY SUPPORT

"X" DETERMINED FROM MANUFACTURER



VIEW C



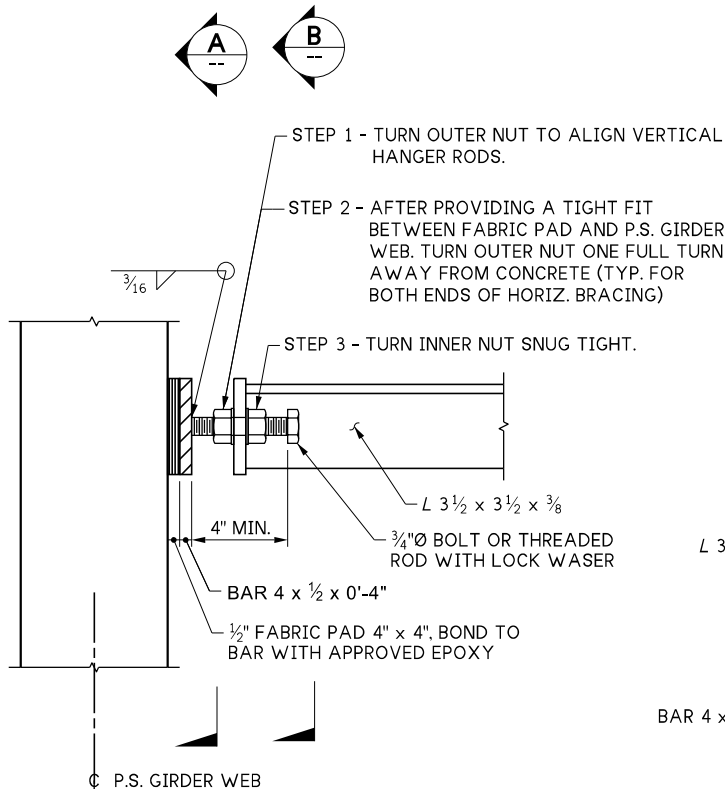
DETAIL 2

GENERAL NOTES

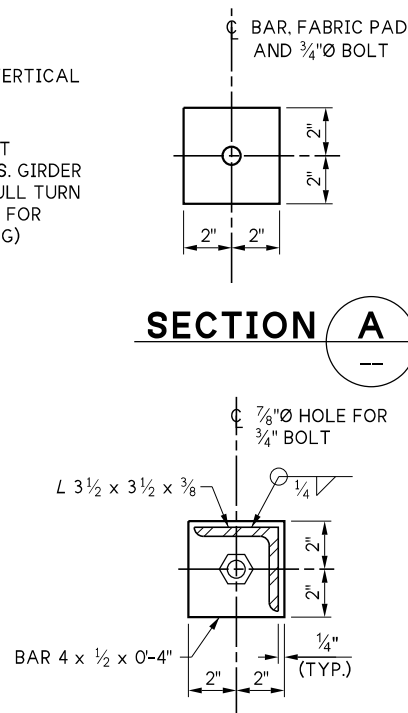
1. ALL MATERIALS SHALL BE GALVANIZED AFTER FABRICATION PER AASHTO M 111 OR AASHTO M 232 EXCEPT PIPE ROLLERS.
2. PAINT ROLLERS WITH THREE COATS OF GALVANIZING REPAIR PAINT. SEE STD. SPEC. SECTION 9-08.1(2)B.

KEY NOTES:

- 1 L 3 1/2 x 3 1/2 x 3/8 WITH 2 - X"Ø HOLES FOR X"Ø HANGER RODS AT EVERY OTHER VERTICAL SUPPORT, NEAR PIERS, AND AT EXPANSION JOINTS.
- 2 ANVIL PIPE ROLL FIG. 171, B-LINE B3114, CARPENTER AND PATTERSON FIG. 142 OR APPROVED EQUAL.
- 3 X"Ø GALV. HANGER RODS WITH 6 HEX HEAD NUTS, STD. WASHERS, AND LOCK WASHERS. "X" DETERMINED FROM MANUFACTURER.
- 4 COOPER B-LINE B22-I-??, POWERSTRUT PS 349-??, OR UNISTRUT P32??, WITH SPRING NUT (TYP.). CHASE THREADS ON HANGER ROD FOR THREAD COMPATIBILITY WITH SPRING NUT. INSERT TO BE INSTALLED LEVEL LONGITUDINALLY AND TRANSVERSELY. PLACE INSERT TO PROVIDE FOR TRANSVERSE ADJUSTMENT OF HANGER RODS. HANGER RODS SHALL NOT BE WITHIN 2" OF THE END OF THE INSERT. TWO INSERTS MAY BE USED TO ACCOMMODATE SUPERELEVATION.
- 5 AT EACH HANGER LOCATION BETWEEN EXPOSED FITTINGS (TYP.).

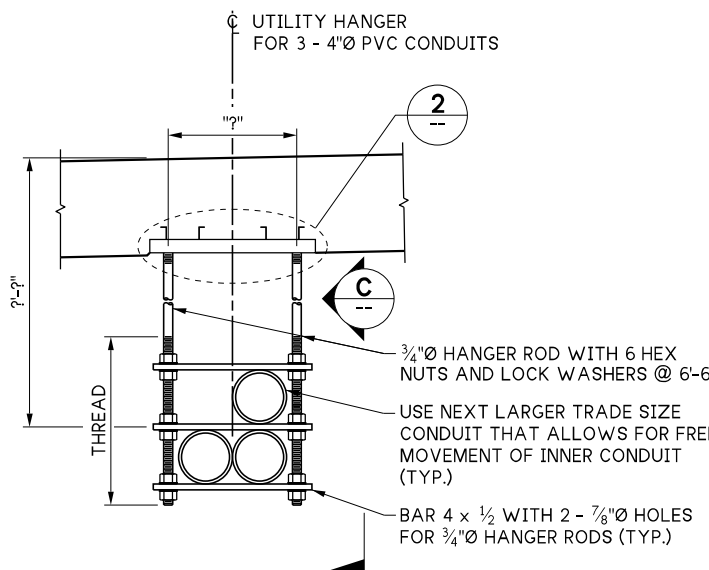


DETAIL 1



SECTION A

SECTION B



PVC CONDUIT SUPPORT DETAIL

10.8-A1-1

FILE NAME	10.8-A1-1_Utility Hanger Details 1 of 2.dgn		
BRIDGE DES. ENG.			
BRIDGE PROJ. ENG.			
SUPERVISOR			
DESIGNED BY			
CHECKED BY			
ENTERED BY			
PRELIM. PLAN BY			
ARCH. / SPEC.			
PLOT DATE: 08-Oct-2025	PLOT TIME: 3:17:33 PM	PLOTTED BY: deboejak	FILE PATH: pw://projectstore.wsdot.wa.gov:WSDOT/Documents/_HQ/Bridge & Structures/Bridge Design/_Design Standards/Standard Drawings and Details/Drainage and Utility Components/Utility Hangers/_DGN/10.8-A1-1_Utility Hanger Details 1 of 2.dgn

REGION NO.	STATE
10	WASH
JOB NUMBER	
CONTRACT NO.	
REVISION	DATE BY

WSDOT
 PRELIMINARY PLAN
 NOT FOR CONSTRUCTION

SEE CERTIFICATION SHEET DATE	SEE CERTIFICATION SHEET DATE
STAMP BOX	STAMP BOX

STANDARD DESIGN DRAWINGS UTILITY HANGERS	PLAN REF NO
UTILITY HANGER DETAILS 1 OF 2	SHEET OF SHEETS