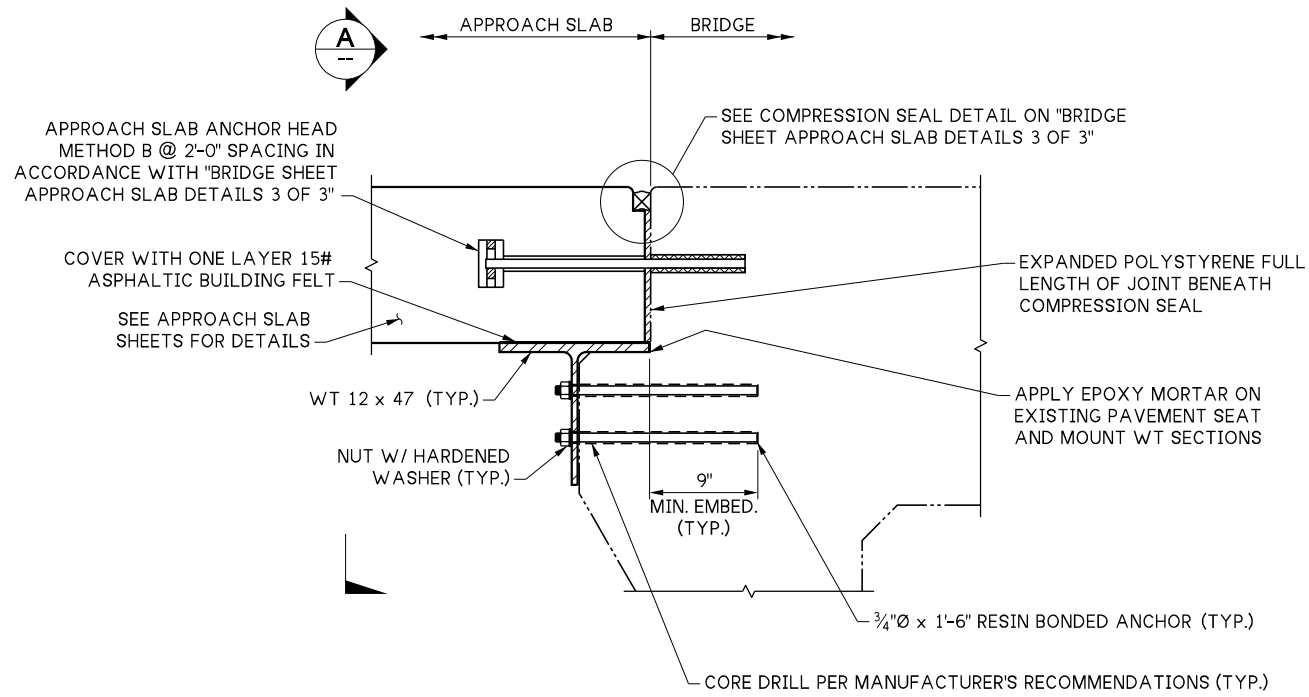
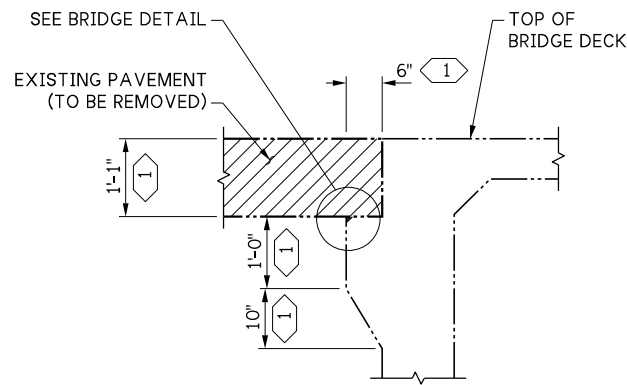


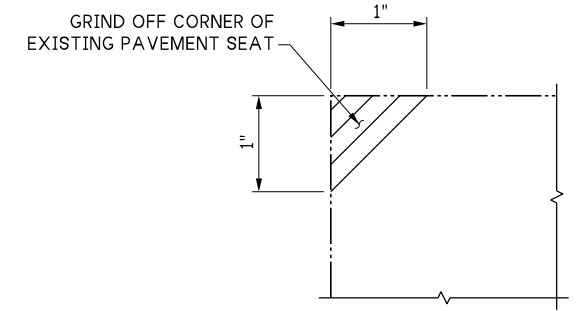
LAST REVISED: 08/09/2024



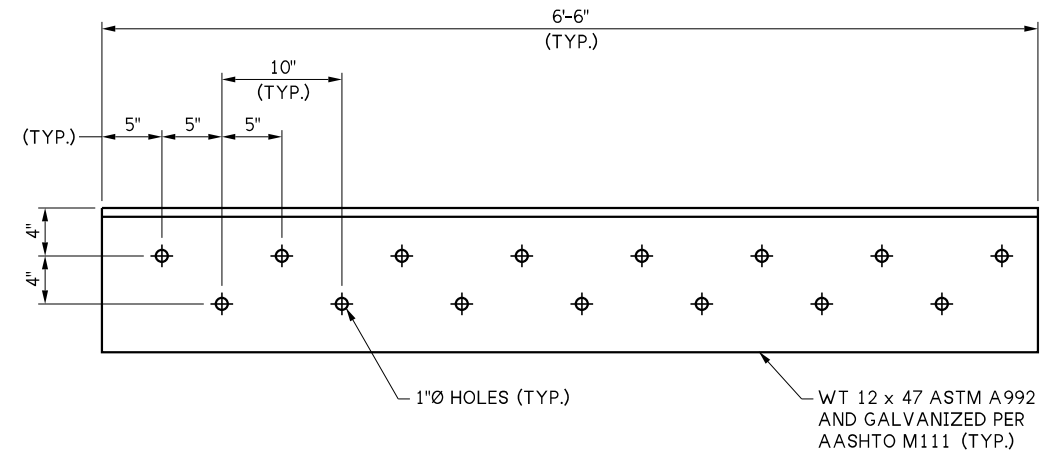
PAVEMENT SEAT REPLACEMENT



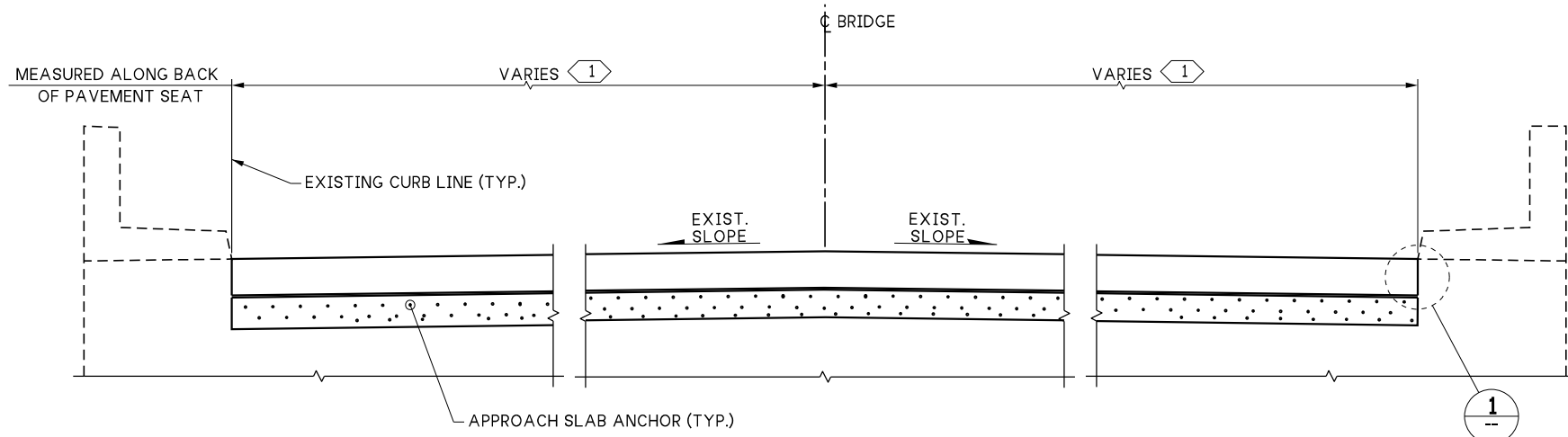
PAVEMENT REMOVAL DETAIL



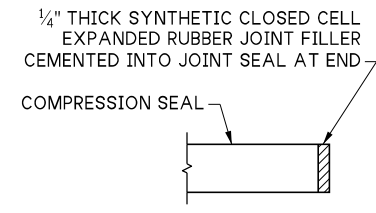
EDGE DETAIL



TYPICAL WT 12 SECTION DETAIL



SECTION A



DETAIL 1

GENERAL NOTES:

- 1. REPAIR EXISTING PAVEMENT SEAT CONCRETE PRIOR TO INSTALLING WT SECTIONS

KEY NOTES:

- 1 THE DIMENSIONS SHOWN IN THE PLANS ARE BASED ON ORIGINAL CONSTRUCTION RECORDS TOGETHER WITH SURVEY DATA. THESE DIMENSIONS SHALL BE MEASURED IN THE FIELD BY THE CONTRACTOR PRIOR TO FABRICATION OF ANY COMPONENTS.

10.6-A2-2

FILE NAME	10.6-A2-2_T-Section Pavement Seat Repair.dgn			
BRIDGE DES. ENG.				
BRIDGE PROJ. ENG.				
SUPERVISOR				
DESIGNED BY				
CHECKED BY				
ENTERED BY				
PRELIM. PLAN BY				
ARCH. / SPEC.				
	REVISION	DATE	BY	

REGION NO.	STATE
10	WASH
JOB NUMBER	
CONTRACT NO.	

WSDOT

PRELIMINARY PLAN
NOT FOR CONSTRUCTION

SEE CERTIFICATION SHEET DATE	SEE CERTIFICATION SHEET DATE
STAMP BOX	STAMP BOX

**STANDARD DESIGN DRAWINGS
PAVEMENT SEAT REPAIR**

T-SECTION PAVEMENT SEAT REPAIR DETAILS

PLAN REF NO
SHEET
OF
SHEETS