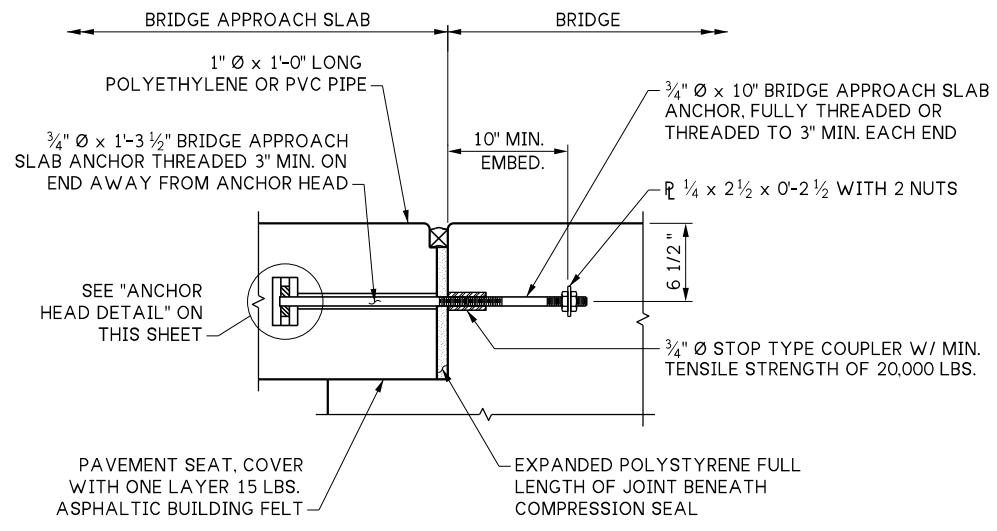
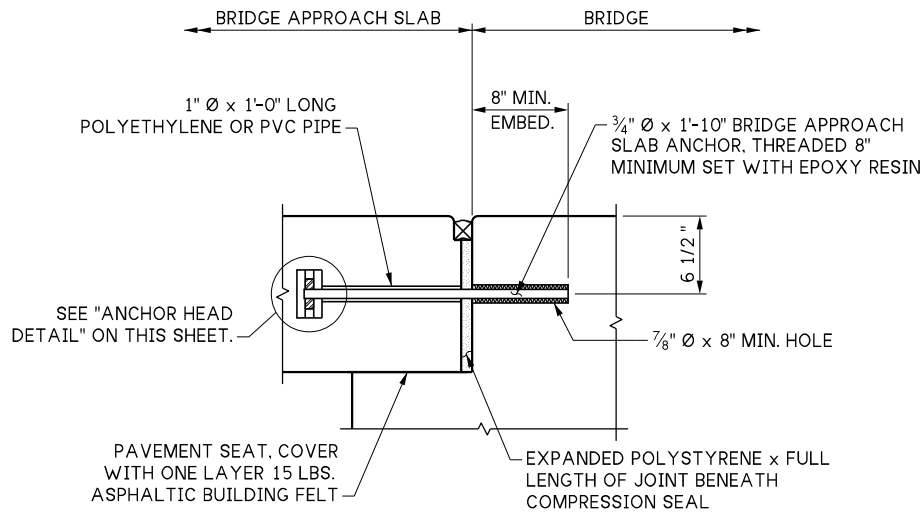


LAST REVISED: 08/07/2024



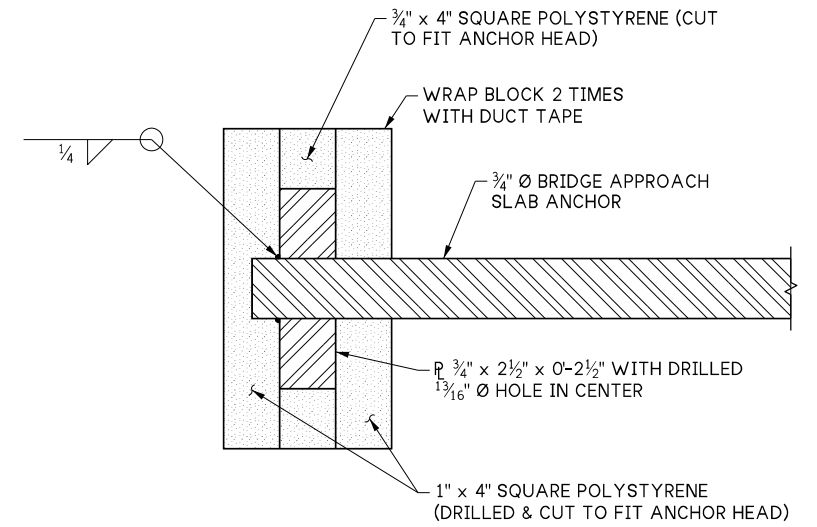
APPROACH EXPANSION ANCHOR - METHOD A

Not for "L" type abutments.

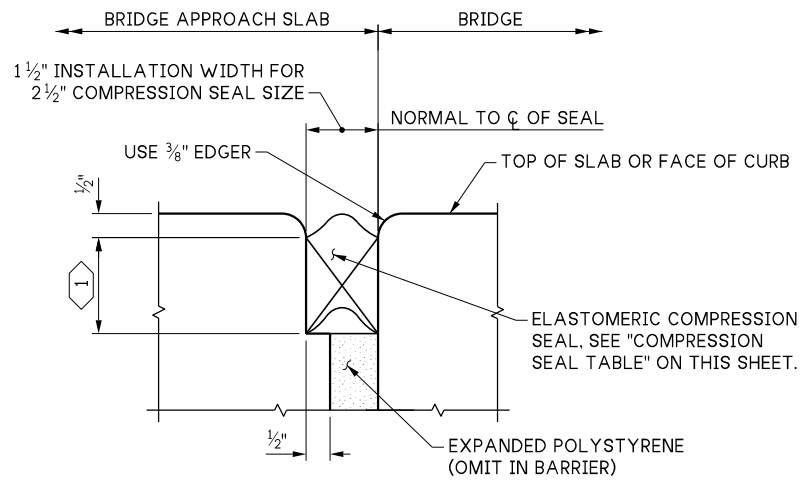


APPROACH EXPANSION ANCHOR - METHOD B

NOT FOR "L" TYPE ABUTMENTS

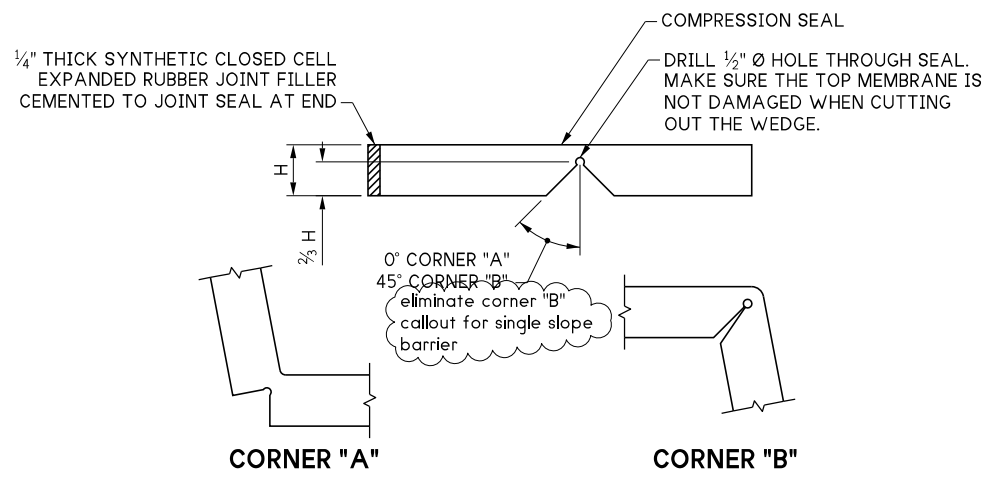


ANCHOR HEAD DETAIL



COMPRESSION SEAL DETAIL

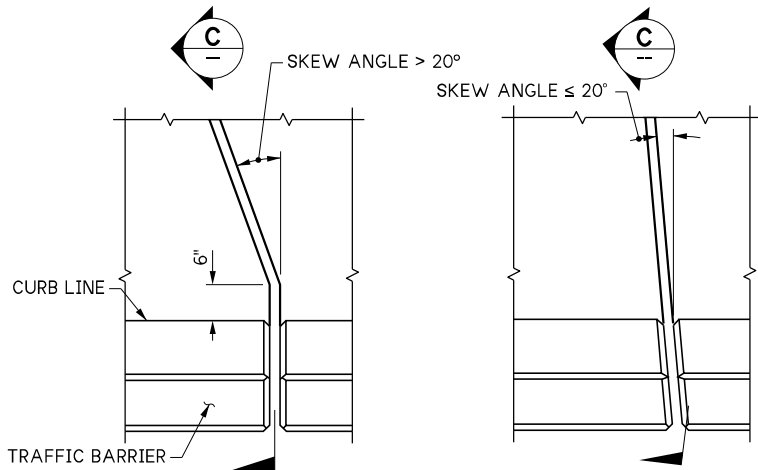
EXPANSION JOINT AT BACK OF PAVEMENT SEAT



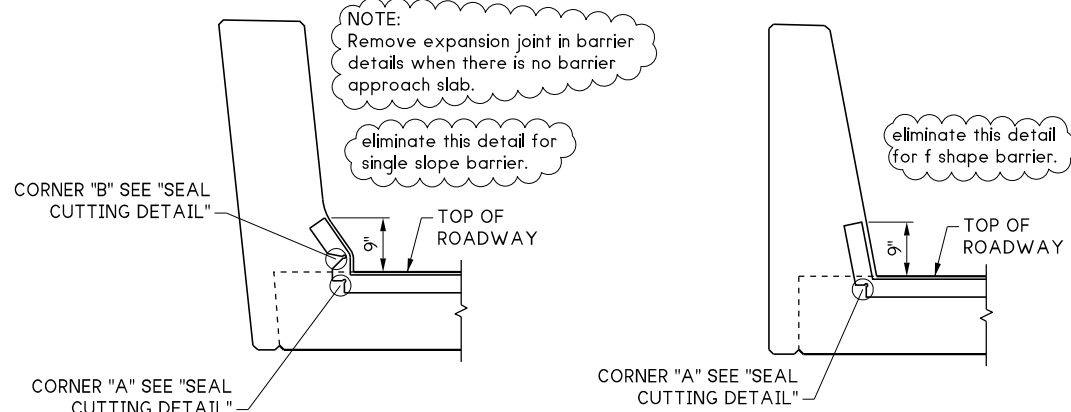
SEAL CUTTING DETAIL

COMPRESSION SEAL TABLE			
D.S. BROWN		WATSON BOWMAN ACME	
SEAL	WIDTH	SEAL	WIDTH
CV-2502	2 1/2	WA-250	2 1/2

TEST IN ACCORDANCE WITH ASTM 2628 PRIOR TO USE.



PLAN - EXPANSION JOINT



SECTION C

SECTION C

NOTES:

- ALL METAL PARTS OF THE APPROACH EXPANSION ANCHOR SHALL RECEIVE ONE COAT OF PAINT CONFORMING TO STANDARD SPECIFICATION SECTION 9-08.1(2)F OR BE GALVANIZED IN ACCORDANCE WITH AASHTO M 232.
- BRIDGE APPROACH SLAB ANCHORS SHALL BE INSTALLED PARALLEL TO ROADWAY AND TO EACH OTHER.

KEY NOTES:

- FULLY COMPRESSED SEAL HEIGHT. SEAL HEIGHT VARIES WITH MANUFACTURER. VERIFY PRIOR TO SLAB CONSTRUCTION.

10.6-A 1-3

FILE NAME	10.6-A 1-3_Approach Slab Details 3 of 3.dgn		
BRIDGE DES. ENG.			
BRIDGE PROJ. ENG.			
SUPERVISOR			
DESIGNED BY			
CHECKED BY			
ENTERED BY			
PRELIM. PLAN BY			
ARCH. / SPEC.			
PLOT DATE: 08-Oct-2025	PLOT TIME: 1:43:24 PM	PLOTTED BY: deboejak	FILE PATH: pw://projectstore.wsdot.wa.gov:WSDOT/Documents/_HQ/Bridge & Structures/Bridge Design/_Design Standards/Standard Drawings and Details/Approach Slabs/_DGN/10.6-A 1-3_Approach Slab Details 3 of 3.dgn

REGION NO.	STATE	
10	WASH	
JOB NUMBER		
CONTRACT NO.		

SEE CERTIFICATION SHEET DATE	SEE CERTIFICATION SHEET DATE
STAMP BOX	STAMP BOX

STANDARD DESIGN DRAWINGS BRIDGE APPROACH SLAB		PLAN REF NO
BRIDGE APPROACH SLAB DETAILS 3 OF 3		SHEET OF SHEETS