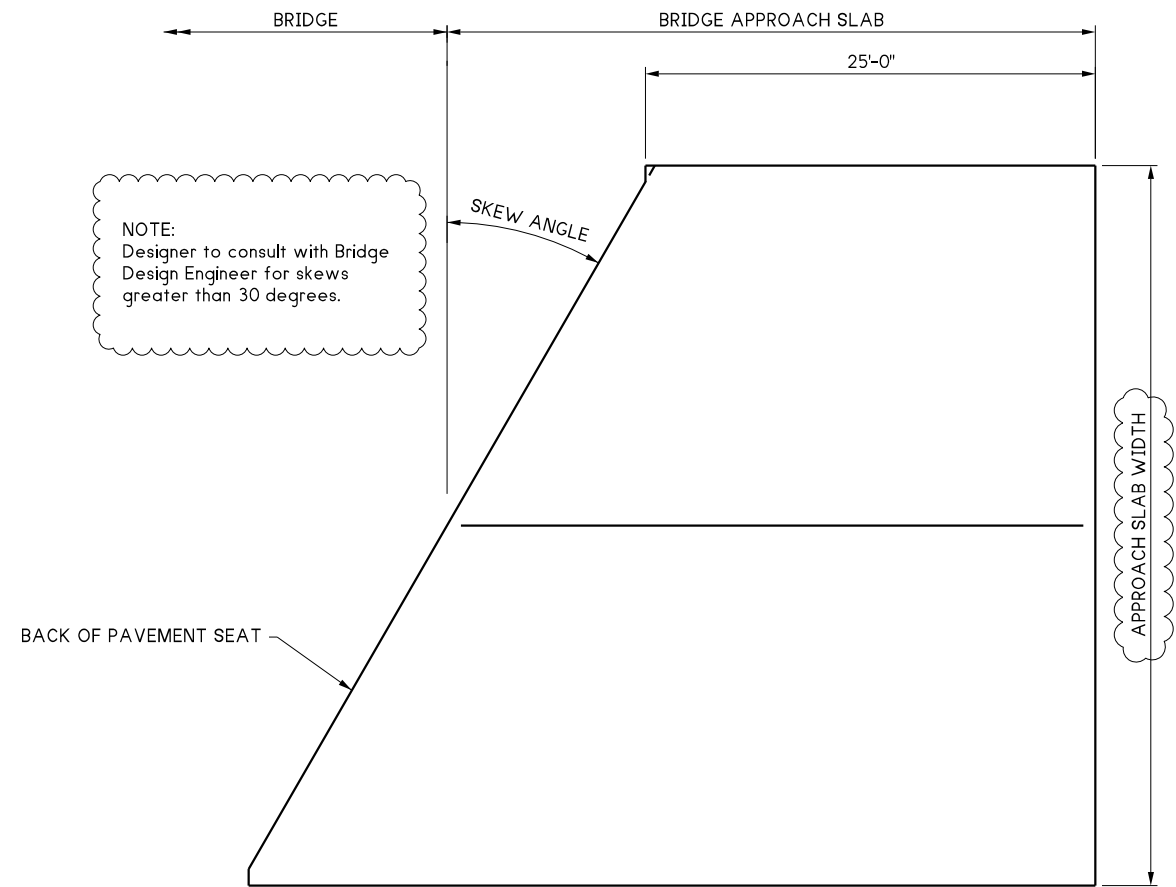
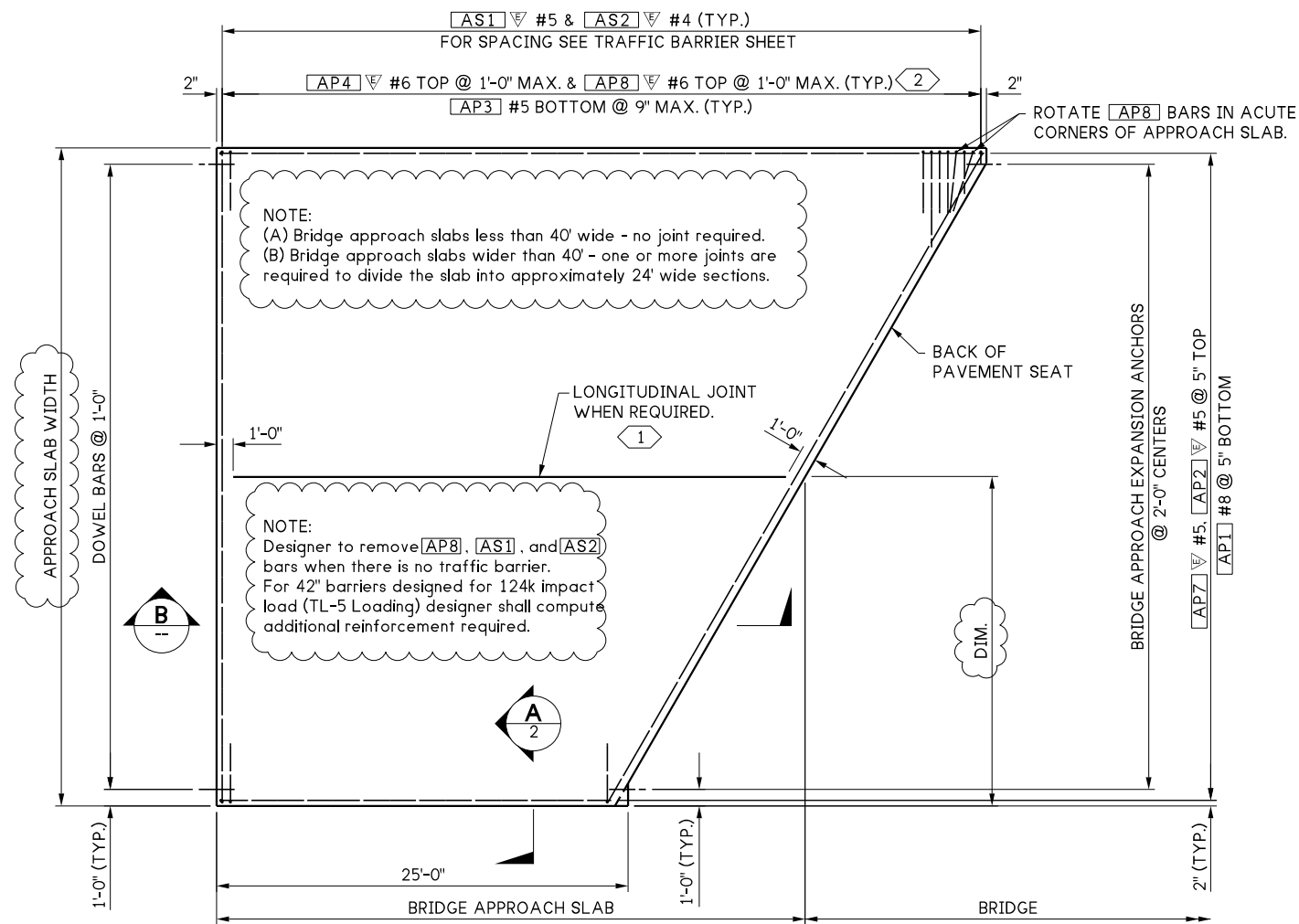


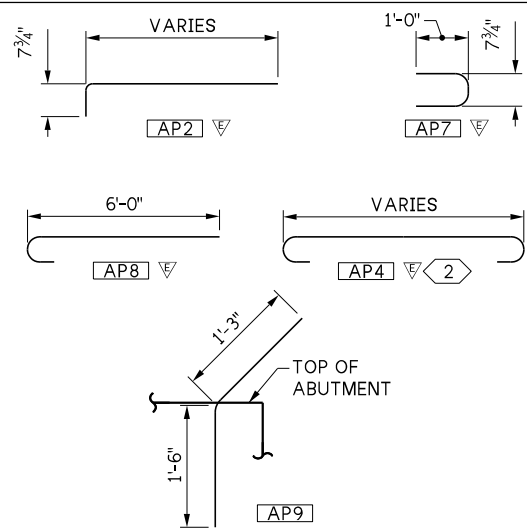
LAST REVISED: 08/06/2024



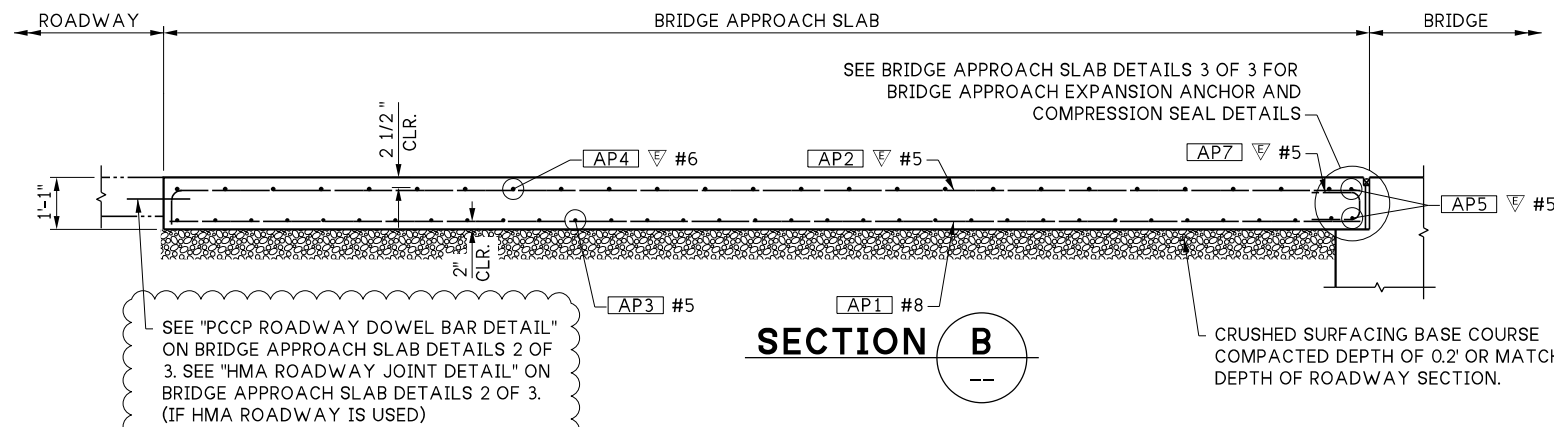
PLAN

NOTE:  
[AP9] bars are only applicable in L abutments or approach retrofits. Remove when not used.

**BENDING DIAGRAM**



▽ = EPOXY COATED REINFORCING STEEL  
NOTE: ALL DIMENSIONS ARE OUT TO OUT



SECTION B

**GENERAL NOTES:**

1. ALL EDGES OF BRIDGE APPROACH SLAB SHALL HAVE 1/2" RADIUS EXCEPT AT LONGITUDINAL JOINTS AND ADJACENT TO L-TYPE ABUTMENTS.
2. THE MINIMUM LAP SPLICE OF #5 IS 2'-0", #5 IS 2'-6", #6 IS 3'-0", AND #8 IS 3'-3". ALL LAP SPLICES SHALL BE STAGGERED SO THAT NO MORE THAN 50% OF REBAR IS SPLICED AT THE SAME LOCATION. LAP SPLICES SHALL BE LOCATED WITHIN THE MIDDLE HALF OF THE BRIDGE APPROACH SLAB. OPTIONAL SPLICES ARE ALLOWED FOR [AP4] #6.
3. FOR TRAFFIC BARRIER DETAILS, INCLUDING ANY BRIDGE APPROACH SLAB BLOCKOUT INFORMATION, SEE TRAFFIC BARRIER SHEETS.

NOTE:  
Designer to remove call outs that are not applicable in note. 1

**KEY NOTES:**

- 1 LONGITUDINAL JOINTS SHALL BE PLACED ON LANE LINES AND SHALL BE CONSTRUCTED AND SEALED IN ACCORDANCE WITH STD. SPEC. SECTION 5-05.3(8). JOINTS MAY BE EITHER A SAWCUT CRACK CONTROL JOINT OR A CONSTRUCTION JOINT. SAWCUT JOINTS SHALL TERMINATE 1'-0" BEFORE REACHING EDGE OF SLAB AND MUST BE SAW CUT AS SOON AS POSSIBLE AFTER PLACEMENT OF CONCRETE. SEE "LONGITUDINAL JOINT DETAIL" ON BRIDGE APPROACH SLAB DETAILS 2 OF 3.
- 2 [AP4] HOOKS ARE ONLY REQUIRED AT THE TRAFFIC BARRIER EDGE.

10.6-A 1-1

FILE NAME	10.6-A 1-1_Approach Slab Details 1 of 3.dgn		
BRIDGE DES. ENG.			
BRIDGE PROJ. ENG.			
SUPERVISOR			
DESIGNED BY			
CHECKED BY			
ENTERED BY			
PRELIM. PLAN BY			
ARCH. / SPEC.			
	REVISION	DATE	BY

REGION NO.	STATE
10	WASH
JOB NUMBER	
CONTRACT NO.	

**WSDOT**

PRELIMINARY PLAN  
NOT FOR CONSTRUCTION

SEE CERTIFICATION SHEET DATE	SEE CERTIFICATION SHEET DATE
STAMP BOX	STAMP BOX

STANDARD DESIGN DRAWINGS  
BRIDGE APPROACH SLAB

BRIDGE APPROACH SLAB  
DETAILS 1 OF 3

PLAN REF NO

SHEET OF SHEETS