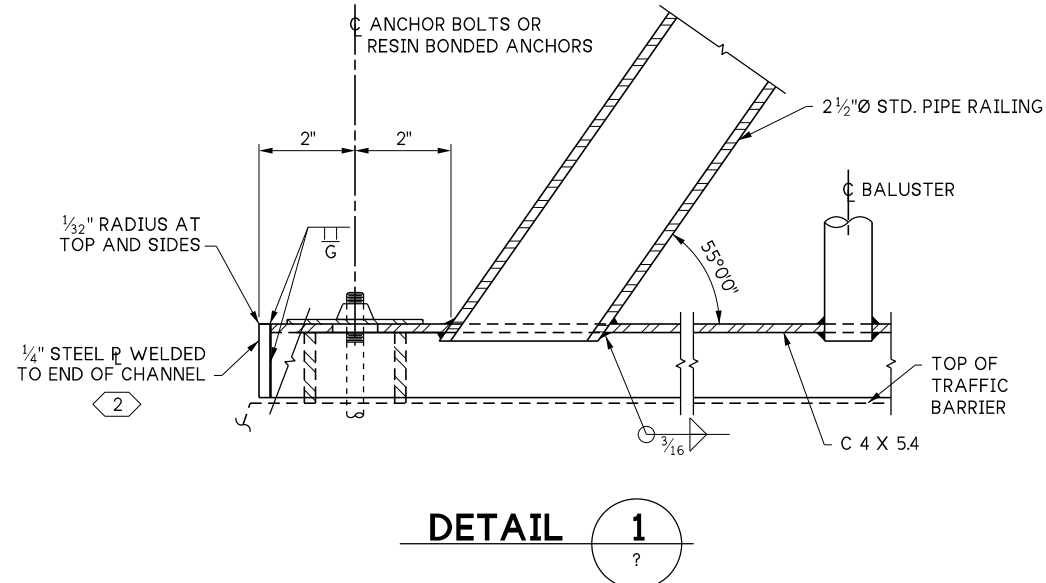
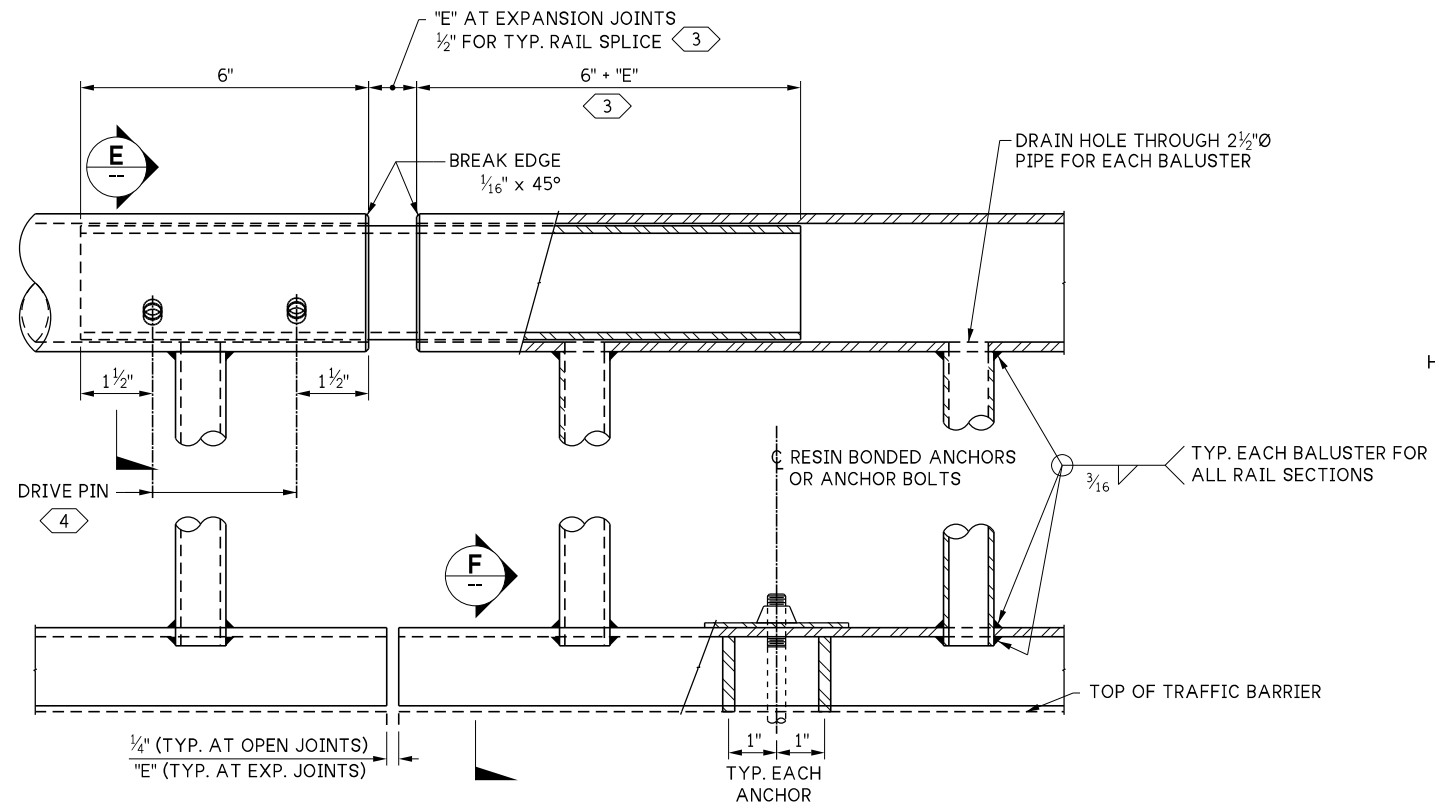


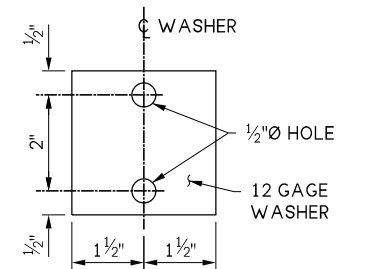
LAST REVISED: 06/10/2025



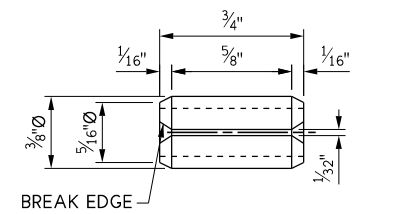
DETAIL 1



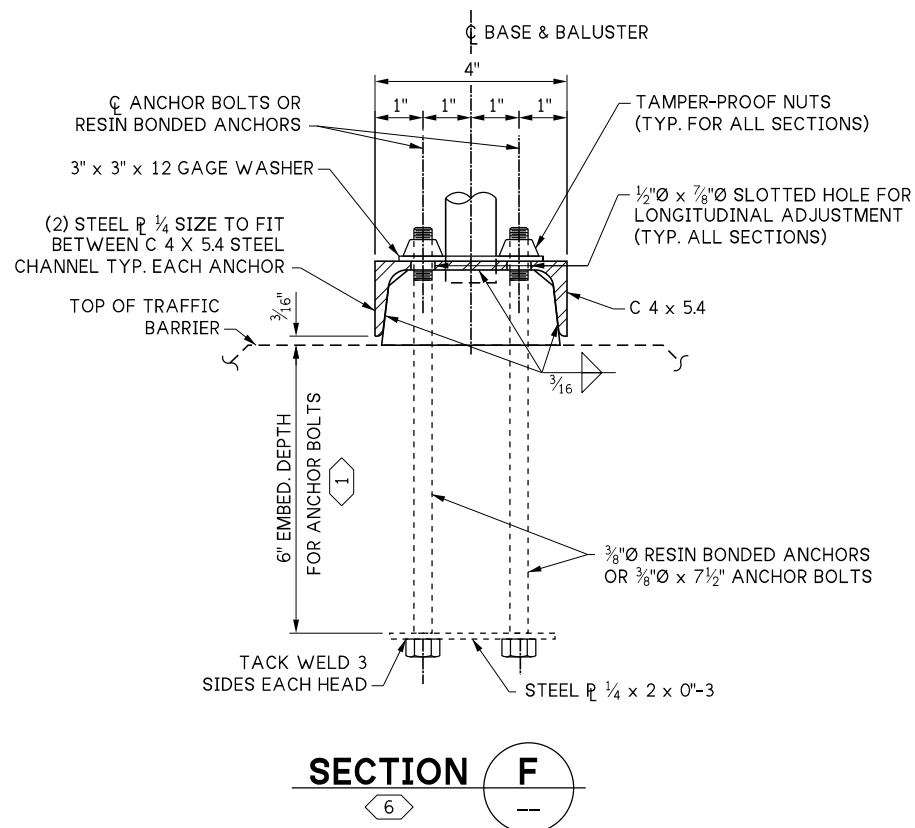
RAIL SPLICE DETAILS



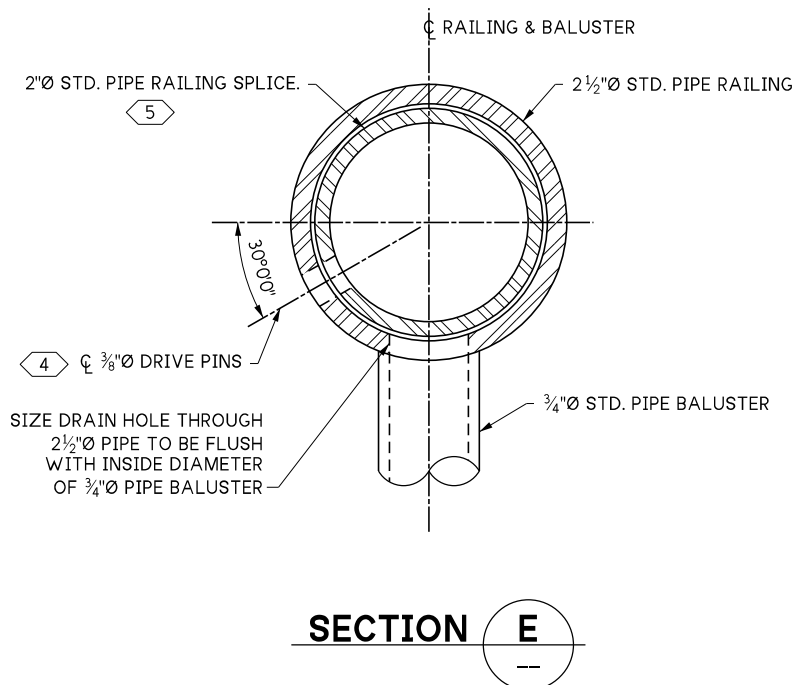
WASHER DETAIL
HOT DIP GALVANIZE AFTER FABRICATION



DRIVE PIN DETAIL
SLOTTED TYPE SPRING PIN (ANSI B18.8.2)



SECTION F



SECTION E

KEY NOTES:

- 1 FOR RESIN BONDED ANCHORS USE MFR'S RECOMMENDATION.
- 2 WELD BEFORE GALVANIZING.
- 3 "E" DIMENSION EQUALS MAX. OPENING OR CLOSING OF CONC. RAIL BASE AT EXPANSION JOINTS.
- 4 LOCATE ON OPPOSITE SIDE OF TRAFFIC. DRIVE PINS SHALL BE DRIVEN FLUSH WITH THE OUTSIDE FACE OF THE RAILING.
- 5 DRILL 3/8" HOLE FOR 3/8" DRIVE PIN AT LOCATION SHOWN.
- 6 ANCHOR BOLTS SHALL BE POSITIONED IN A JIG DURING WELDING.

10.5-A-72

FILE NAME	10.5-A72_Bridge Railing Type S-BP-12 Details 2 of 2.dgn			
BRIDGE DES. ENG.				
BRIDGE PROJ. ENG.				
SUPERVISOR				
DESIGNED BY				
CHECKED BY				
ENTERED BY				
PRELIM. PLAN BY				
ARCH. / SPEC.				
PLOT DATE: 07-Oct-2025	PLOT TIME: 3:56:08 PM	PLOTTED BY: deboejak	FILE PATH: pw://projectstore.wsdot.wa.gov:WSDOT/Documents/_HQ/Bridge & Structures/Bridge Design/_Design Standards/Standard Drawings and Details/Barriers and Railings/Bridge Railings_Pedestrian and BP/_DGN/10.5-A-72_Bridge Railing Type S-BP-12 Details 2 of 2.dgn	

REGION NO.	STATE
10	WASH
JOB NUMBER	
CONTRACT NO.	

WSDOT

PRELIMINARY PLAN
NOT FOR CONSTRUCTION

SEE CERTIFICATION SHEET DATE	SEE CERTIFICATION SHEET DATE
STAMP BOX	STAMP BOX

STANDARD DESIGN DRAWINGS BRIDGE RAILINGS		PLAN REF NO
BRIDGE RAILING TYPE S-BP-12 DETAILS 2 OF 2		SHEET OF SHEETS