

MATERIAL SPECIFICATION TABLE

MAT'L	PART	MATERIAL SPECIFICATION
STEEL	RAILS & BALUSTERS	ASTM A53 GRADE B OR ASTM A500 GRADE C SCHEDULE 40 (STD. PIPE). GALVANIZED IN ACCORDANCE WITH AASHTO M 111
	WASHERS	ASTM A193 GRADE B7 GALVANIZED IN ACCORDANCE WITH AASHTO M 232
	PLATES/BAR CHANNELS	ASTM A36 GALVANIZED IN ACCORDANCE WITH AASHTO M 111
	DRIVE PINS	ASTM A276 OR A240 TYPE 302 STAINLESS STEEL
	ANCHOR BOLTS & WASHERS	STANDARD SPECIFICATION SECTION 9-06.5(4) GR. 36 (GALVANIZE IN ACCORDANCE WITH AASHTO SPECIFICATION M 232)
	NUTS	TAMPER-PROOF TYPE ZINC ALLOY SEE SPECIAL PROVISIONS SECTION 6-06.2

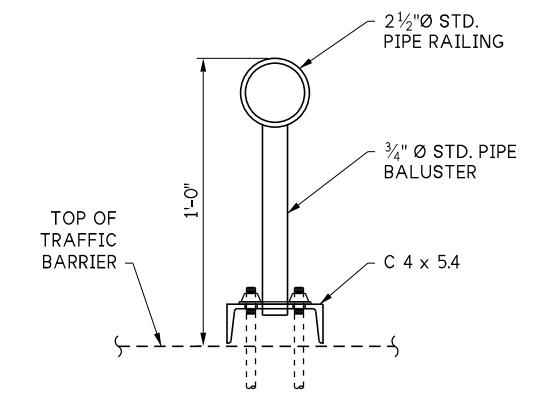
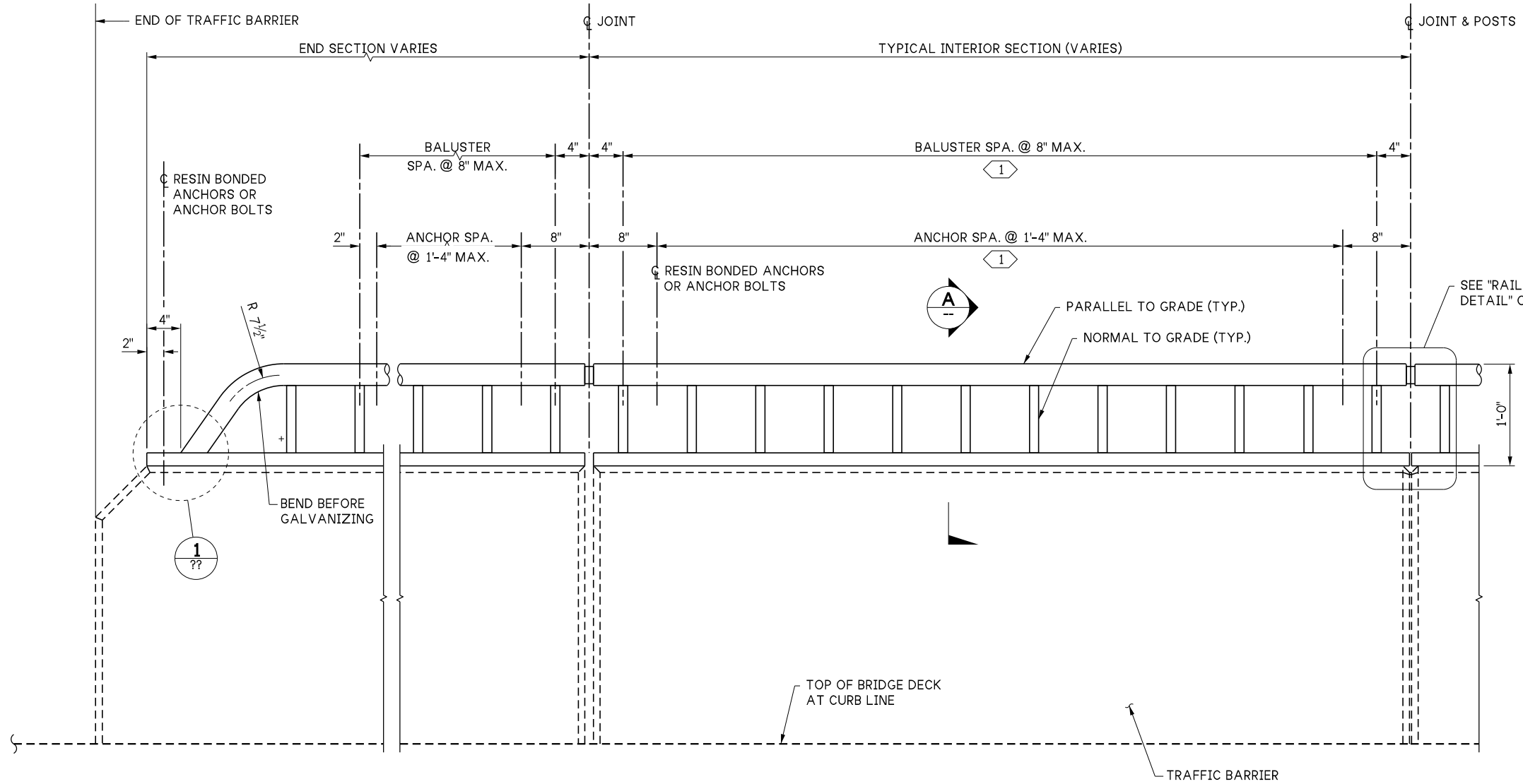
NOTES:

- PIPE RAILING, PIPE RAILING SPLICES, AND BOTTOM CHANNELS SHALL BE BENT TO THE HORIZONTAL CURVE WHERE THE RADIUS OF CURVATURE IS LESS THAN 200'.
- SHOP DRAWINGS OF RAILING SHALL BE SUBMITTED AS A TYPE 2 WORKING DRAWING SHOWING COMPLETE DIMENSIONS AND DETAILS OF FABRICATION AND INCLUDING AN ERECTION DIAGRAM. MATERIAL SPECIFICATIONS SHALL BE PROVIDED IN THE SHOP DRAWINGS FOR ALL COMPONENTS.
- CUTTING SHALL BE DONE BY SAWING OR MILLING AND ALL CUTS SHALL BE TRUE AND SMOOTH. FLAME CUTTING WILL NOT BE PERMITTED.
- WELDING OF STEEL SHALL CONFORM TO THE LATEST EDITION OF AWS D1.1.
- PIPE RAILING, PIPE BALUSTERS, AND PIPE RAILING SPLICES SHALL BE ADEQUATELY WRAPPED TO INSURE SURFACE PROTECTION DURING HANDLING AND TRANSPORTATION TO THE JOB SITE.

KEY NOTES:

- ① BALUSTER & ANCHOR SPACINGS SHOWN ARE MAXIMUM ALLOWABLE. VARY AS NECESSARY ADJACENT TO BRIDGE EXPANSION JOINTS.

LAST REVISED: 06/10/2025



ELEVATION

BALUSTER ATTACHMENT DETAILS NOT SHOWN

FILE NAME	10.5-A7-1_Bridge Railing Type S-BP-12 Details 1 of 2.dgn			
BRIDGE DES. ENG.				
BRIDGE PROJ. ENG.				
SUPERVISOR				
DESIGNED BY				
CHECKED BY				
ENTERED BY				
PRELIM. PLAN BY				
ARCH. / SPEC.				
	REVISION	DATE	BY	

REGION NO.	STATE
10	WASH
JOB NUMBER	
CONTRACT NO.	


PRELIMINARY PLAN
 NOT FOR CONSTRUCTION

SEE CERTIFICATION SHEET DATE	SEE CERTIFICATION SHEET DATE
STAMP BOX	STAMP BOX

STANDARD DESIGN DRAWINGS BRIDGE RAILINGS
BRIDGE RAILING TYPE S-BP-12 DETAILS 1 OF 2

PLAN REF NO
SHEET OF SHEETS

10.5-A7-1