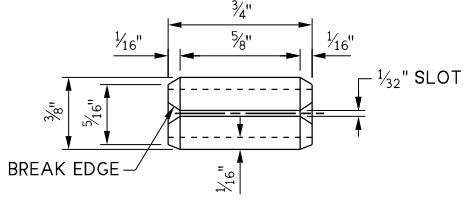
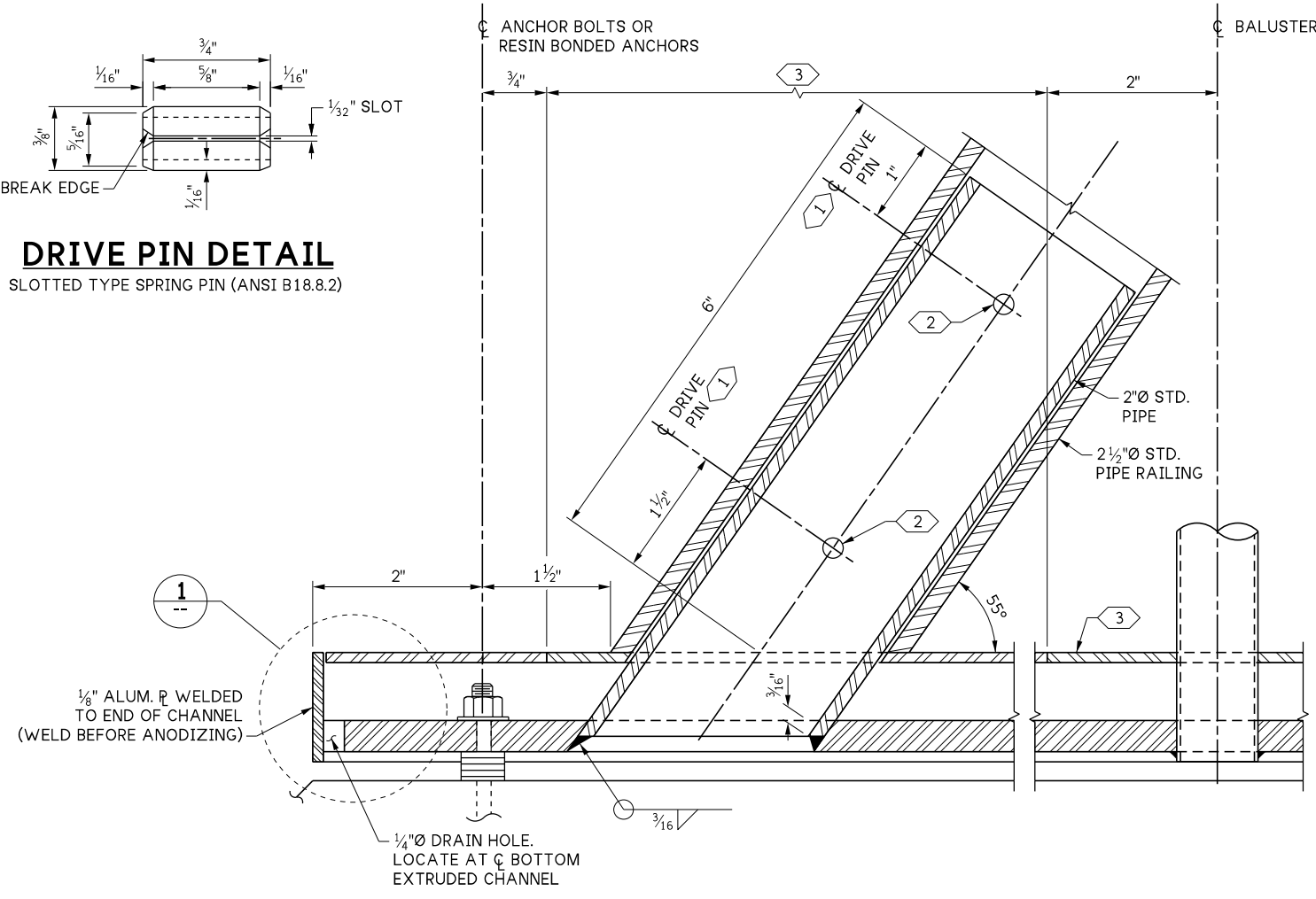


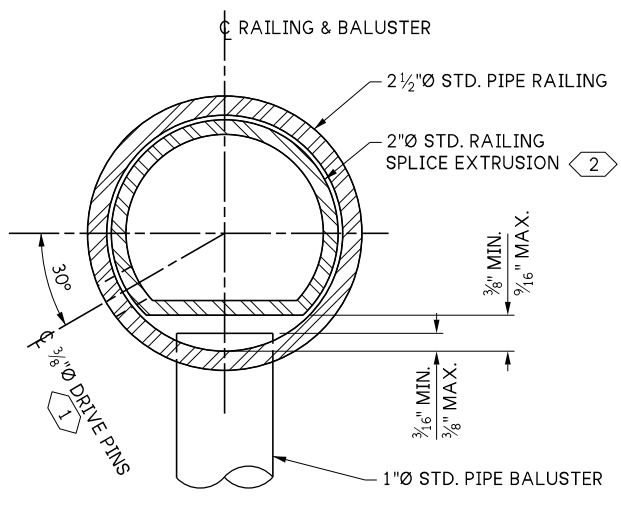
LAST REVISED: 04/02/2024



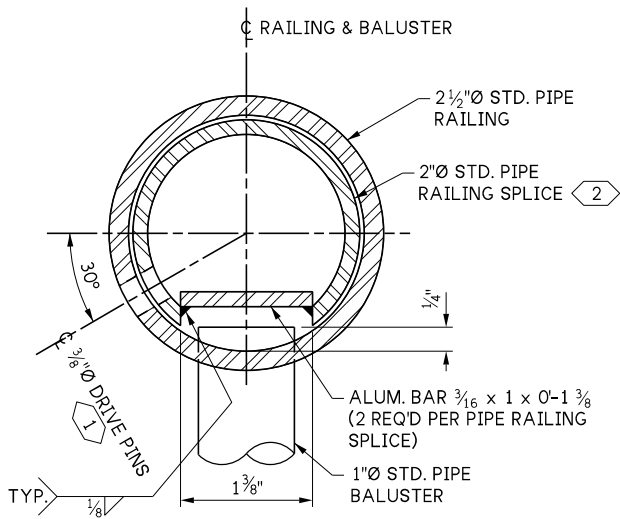
**DRIVE PIN DETAIL**  
SLOTTED TYPE SPRING PIN (ANSI B18.8.2)



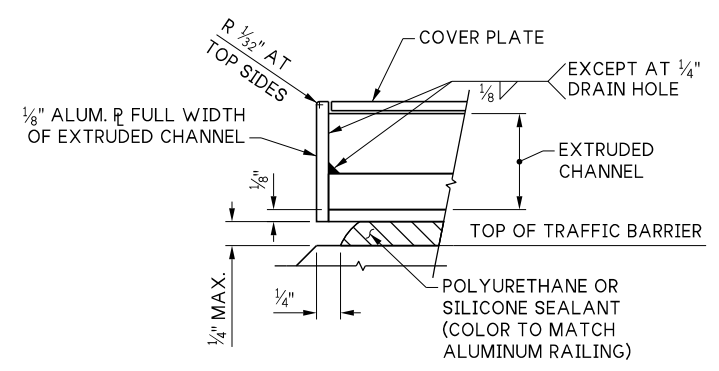
**END DETAIL**



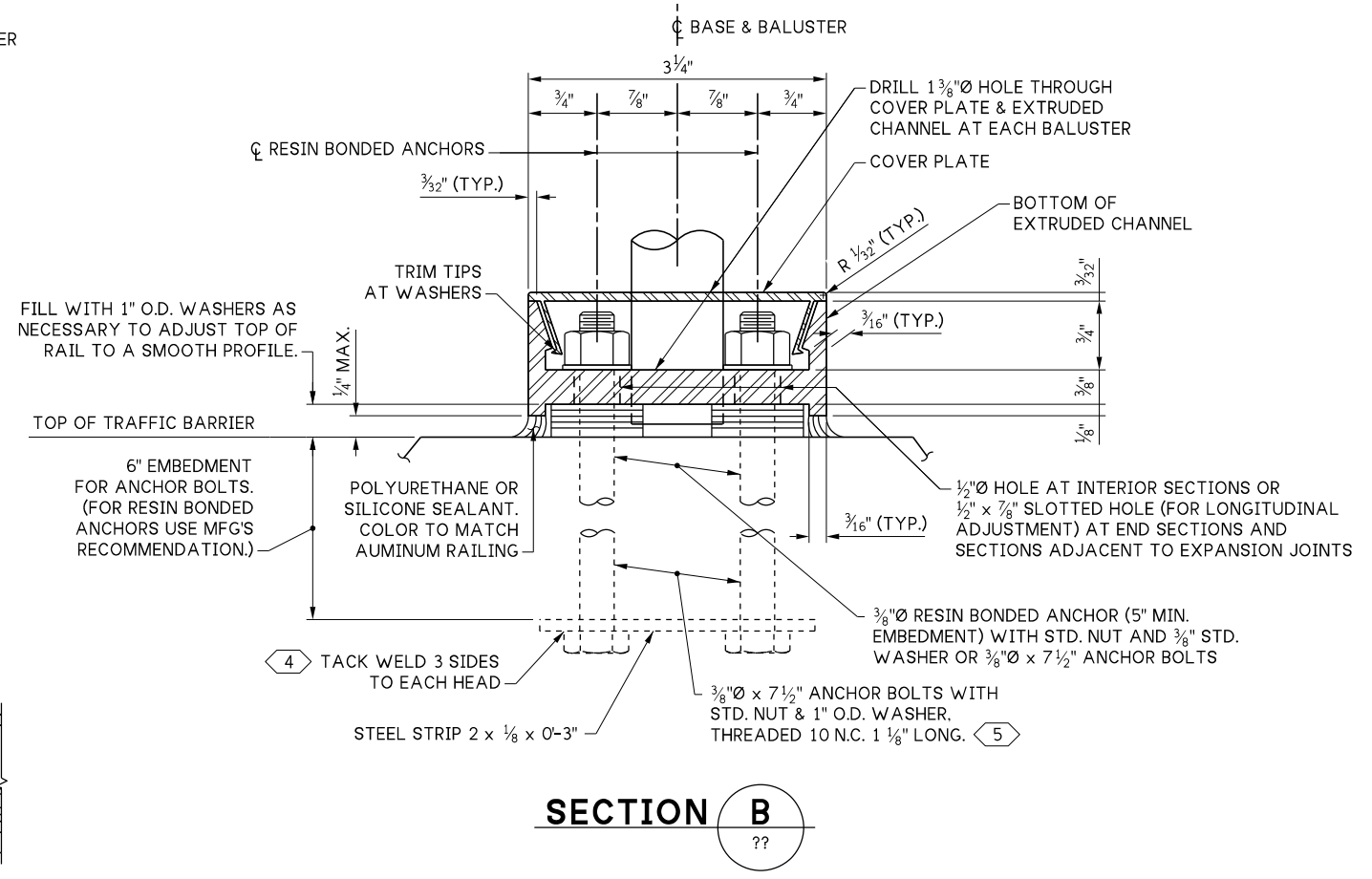
**SECTION A**  
OPTION 1



**SECTION A**  
OPTION 2



**DETAIL 1**  
DRAIN HOLES NOT SHOWN



**SECTION B**  
??

MATERIAL SPECIFICATION TABLE		
MAT'L	PART	MATERIAL SPECIFICATION
ALUMINIUM	RAILS & BALUSTERS	ASTM B221-6005-T5, 6005A-T5 OR ASTM B241-6061-T6
	EXTRUDED CHANNELS, COVER PLATES & BAR	ASTM B221-6005-T5 OR 6005A-T5
STEEL	STRIP	ASTM A36
	ANCHOR BOLTS, NUTS & WASHERS	STANDARD SPECIFICATION SECTION 9-06.5(4) GR. 36 (GALVANIZE IN ACCORDANCE WITH AASHTO SPECIFICATION M 232)
	DRIVE PINS	ASTM A276 OR A240 TYPE 302 STAINLESS STEEL

- KEY NOTES:**
- 1 LOCATE ON OPPOSITE SIDE OF TRAFFIC. DRIVE PINS SHALL BE DRIVEN FLUSH WITH THE OUTSIDE FACE OF THE RAILING.
  - 2 DRILL 3/8" Ø HOLE FOR 3/8" Ø DRIVE PIN AT LOCATION SHOWN.
  - 3 THIS COVER PLATE SECTION SHALL BE SNAPPED INTO POSITION AFTER 2" Ø STD. PIPE HAS BEEN WELDED TO BOTTOM EXTRUDED CHANNEL.
  - 4 ANCHOR BOLTS SHALL BE POSITIONED IN A JIG DURING WELDING.
  - 5 ALTERNATE TO 3/8" Ø RESIN BONDED ANCHORS.

10.5-A6-2

FILE NAME	10.5-A6-2_Bridge Railing Type BP-12 Details 2 of 2.dgn		
BRIDGE DES. ENG.			
BRIDGE PROJ. ENG.			
SUPERVISOR			
DESIGNED BY			
CHECKED BY			
ENTERED BY			
PRELIM. PLAN BY			
ARCH. / SPEC.			
	REVISION	DATE	BY

REGION NO.	STATE
10	WASH
JOB NUMBER	
CONTRACT NO.	



SEE CERTIFICATION SHEET DATE	SEE CERTIFICATION SHEET DATE
STAMP BOX	STAMP BOX

STANDARD DESIGN DRAWINGS BRIDGE RAILINGS		PLAN REF NO
BRIDGE RAILING TYPE BP-12 DETAILS 2 OF 2		SHEET OF SHEETS