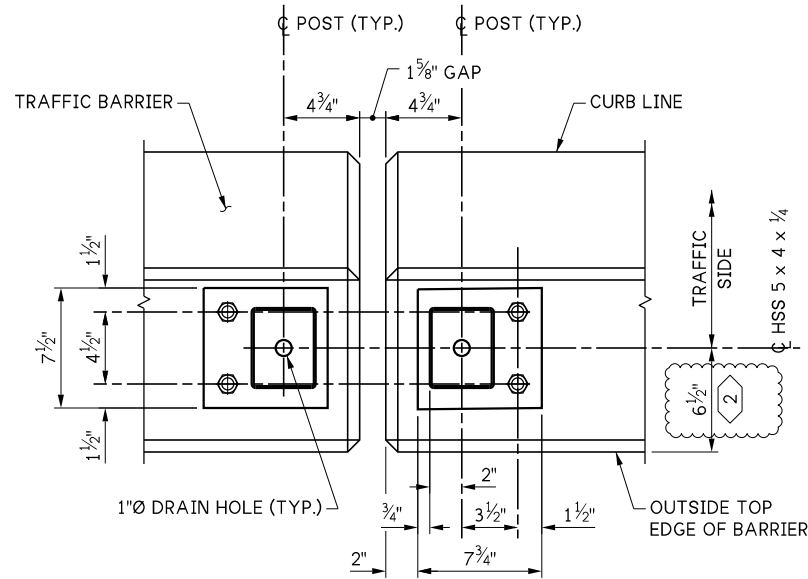
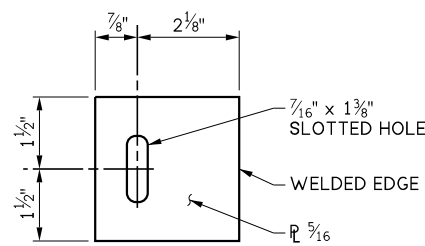


LAST REVISED: 07/16/2025

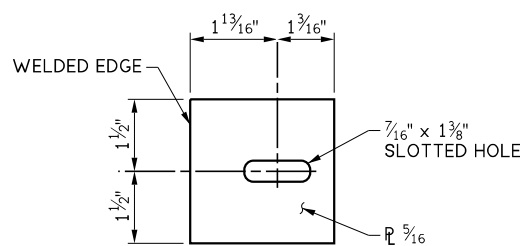
10.5-A-5-3



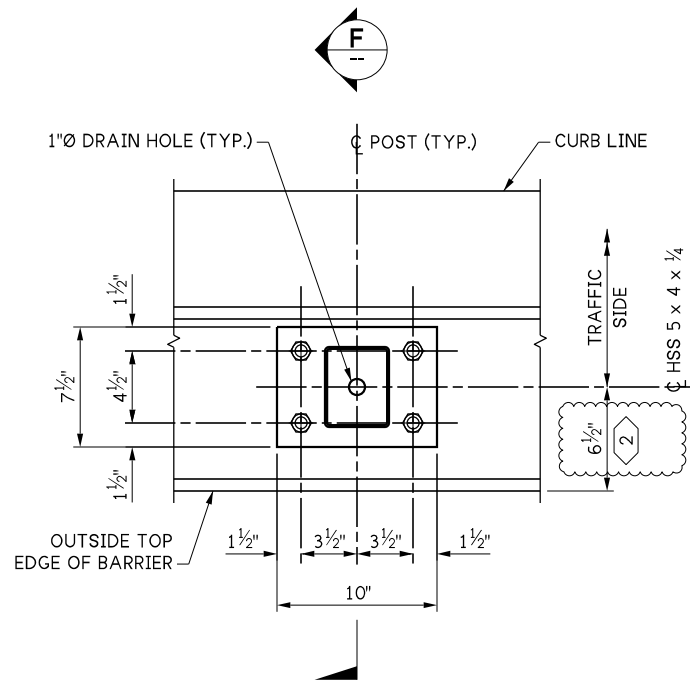
SECTION A
?



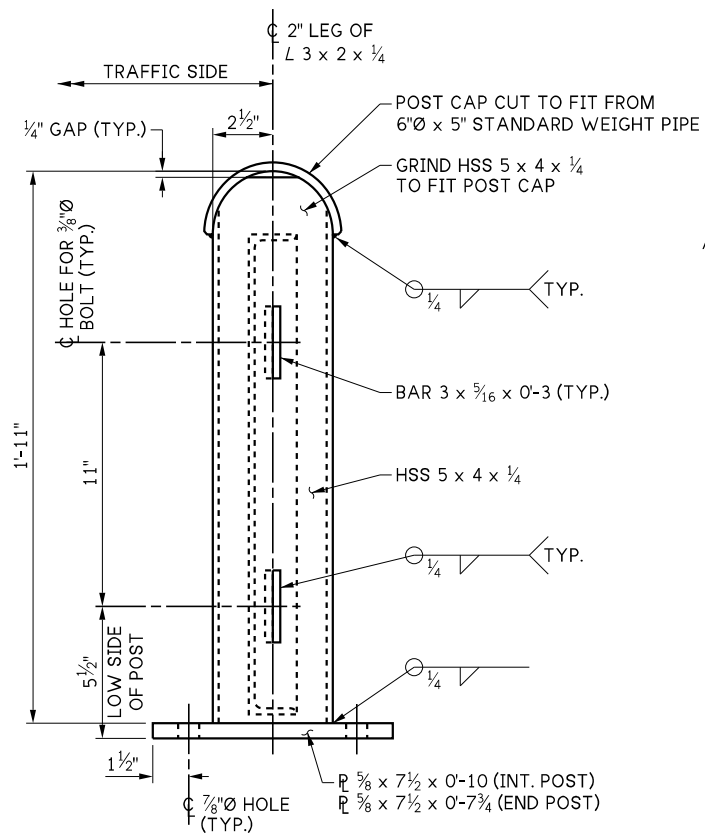
TAB \"A\" DETAIL
PLACE TAB \"A\" ON FENCE PANEL



TAB \"B\" DETAIL
PLACE TAB \"B\" ON POST

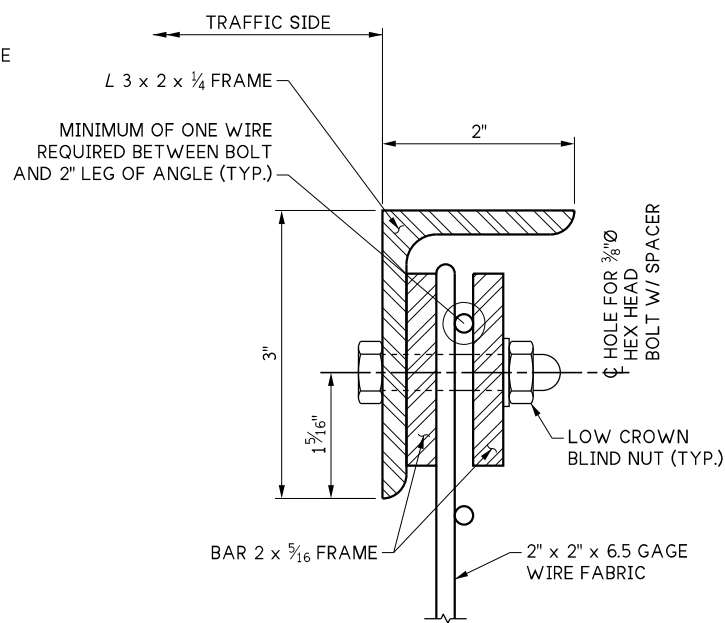


SECTION B
?



SECTION D
?

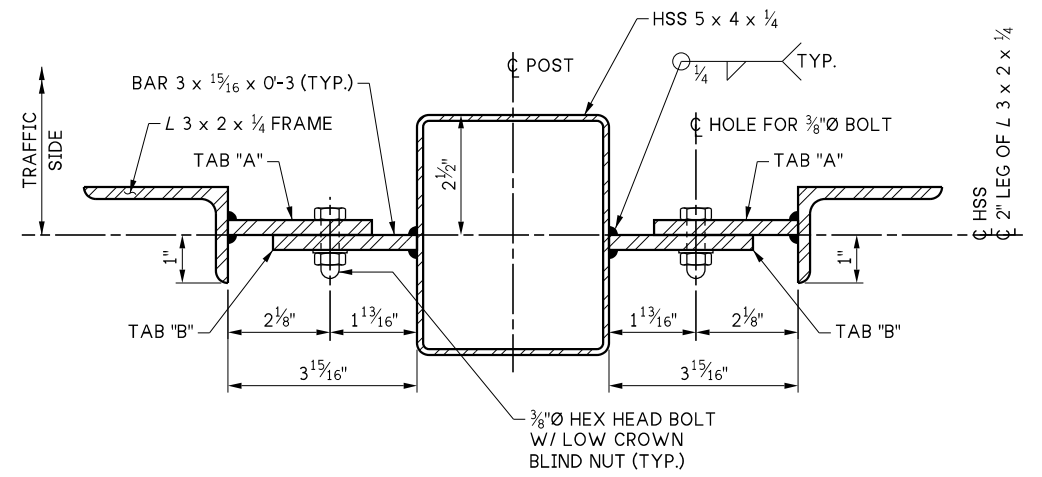
POST DRAIN DETAIL



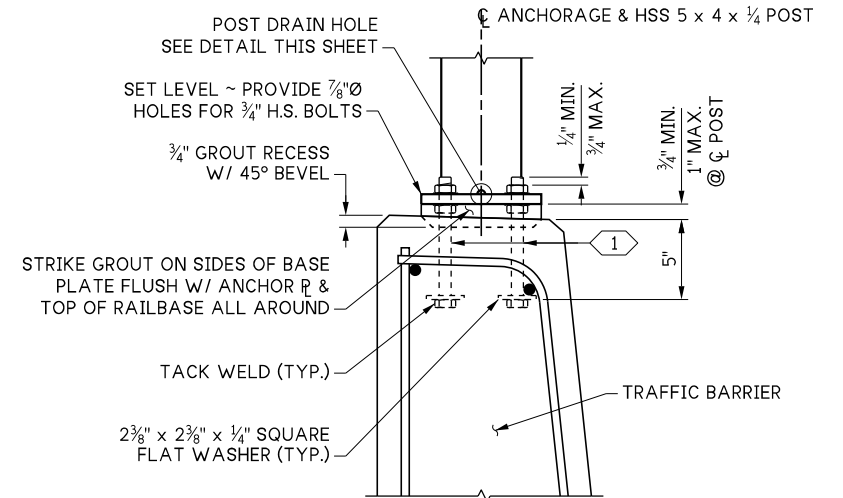
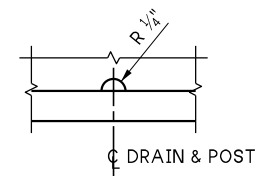
SECTION E
?

NOTE:

HEX HEAD BOLTS THREADS SHALL BE FULLY COATED WITH THREAD LOCKING AGENT JUST PRIOR TO CONNECTING THE RAILING PANELS TO THE POSTS. THE HEX HEAD BOLTS SHALL BE TIGHTENED IN ACCORDANCE WITH SECTION 6-06.3(2) AS SUPPLEMENTED IN THE SPECIAL PROVISIONS.



SECTION C
?



SECTION F
?

KEY NOTE:

- ① THE ANCHORAGE SHALL BE EITHER:
 - 1) 3/4\"/>
 - 2) 3/4\"/>
- ② DESIGNER TO VERIFY ANCHOR BOLT CLEARANCE TO TRAFFIC BARRIER LONGITUDINAL REINFORCEMENT.

FILE NAME	10.5-A-5-3_Snow Fence Railing 2 of 2.dgn			
BRIDGE DES. ENG.				
BRIDGE PROJ. ENG.				
SUPERVISOR				
DESIGNED BY				
CHECKED BY				
ENTERED BY				
PRELIM. PLAN BY				
ARCH. / SPEC.				
PLOT DATE: 07-Oct-2025	PLOT TIME: 3:23:47 PM	PLOTTED BY: deboejak	FILE PATH: pw://projectstore.wsdot.wa.gov:WSDOT/Documents/_HQ/Bridge & Structures/Bridge Design/_Design Standards/Standard Drawings and Details/Barriers and Railings/Bridge Railings_Fences/_DGN/10.5-A-5-3_Snow Fence Railing 2 of 2.dgn	

REGION NO.	STATE
10	WASH
JOB NUMBER	
CONTRACT NO.	
REVISION	DATE BY

WSDOT

PRELIMINARY PLAN
NOT FOR CONSTRUCTION

SEE CERTIFICATION SHEET DATE	SEE CERTIFICATION SHEET DATE
STAMP BOX	STAMP BOX

STANDARD DESIGN DRAWINGS BRIDGE RAILINGS	PLAN REF NO
BRIDGE RAILING TYPE SNOW FENCE DETAILS 2 OF 2	SHEET OF SHEETS