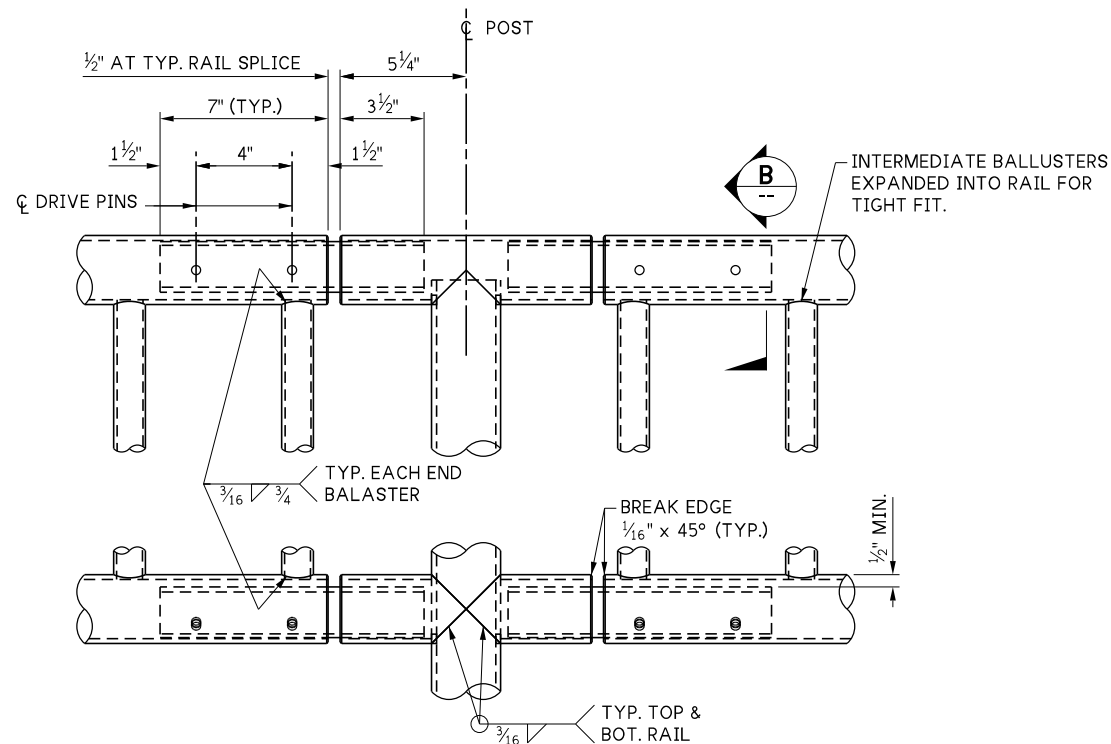
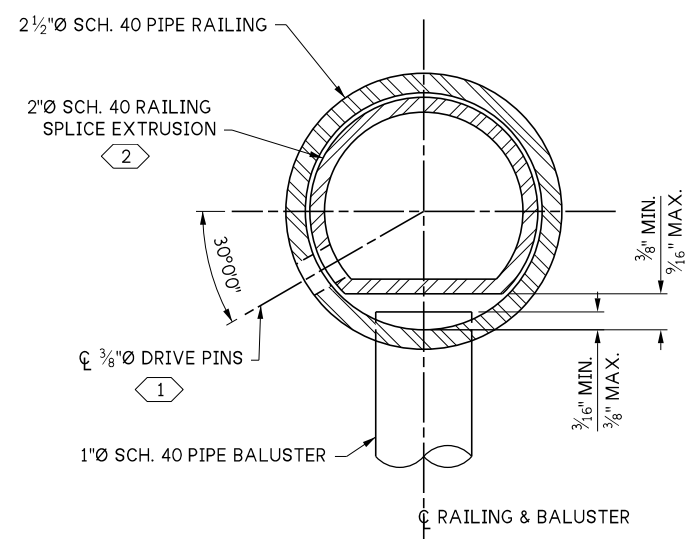


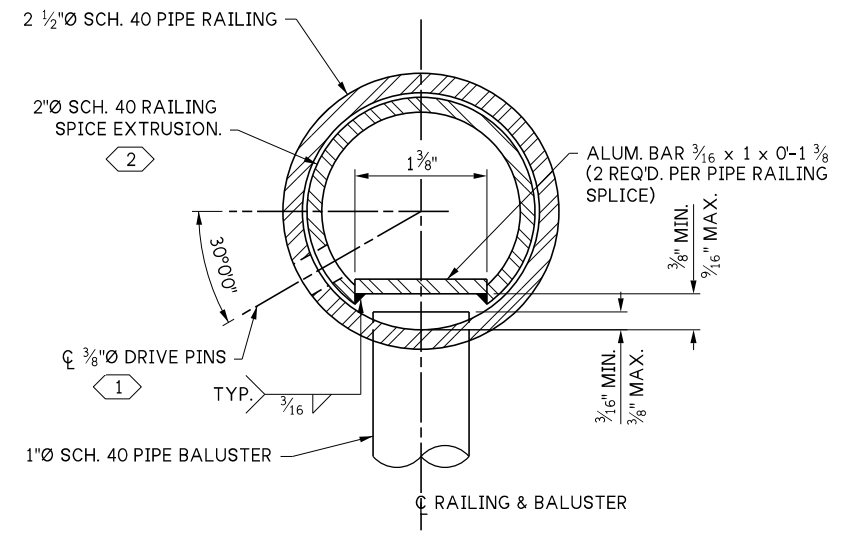
LAST REVISED: 03/28/2024



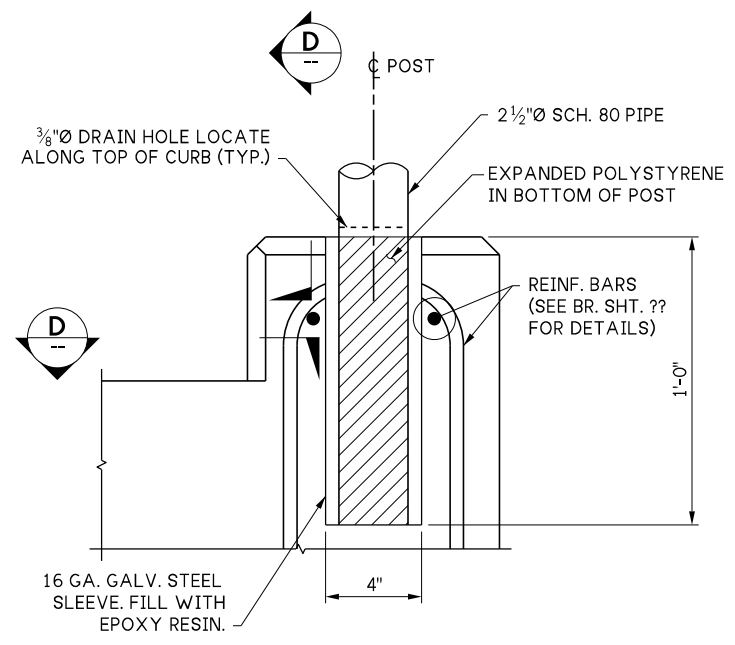
DETAIL 1
??



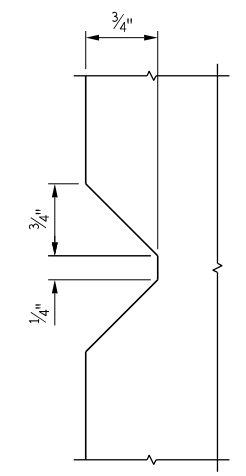
SECTION B
OPTION 1



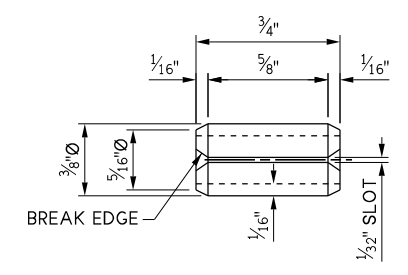
SECTION B
OPTION 2



SECTION C
??



SECTION D
--



DRIVE PIN DETAIL
SLOTTED TYPE SPRING PIN (ANSI B18.82)

- KEY NOTES:**
- ① LOCATE ON OPPOSITE SIDE OF TRAFFIC. DRIVE PINS SHALL BE DRIVEN FLUSH WITH THE OUTSIDE FACE OF THE RAILING.
 - ② DRILL 3/8"Ø HOLE FOR 3/8" DRIVE PIN AT LOCATION SHOWN.

10.5-A4-2

<p>FILE NAME: 10.5-A4-2_Pedestrian Railing Details 2 of 2.dgn</p> <p>BRIDGE DES. ENG.:</p> <p>BRIDGE PROJ. ENG.:</p> <p>SUPERVISOR:</p> <p>DESIGNED BY:</p> <p>CHECKED BY:</p> <p>ENTERED BY:</p> <p>PRELIM. PLAN BY:</p> <p>ARCH. / SPEC.:</p>	<p>REGION NO. 10</p> <p>STATE WASH</p> <p>JOB NUMBER:</p> <p>CONTRACT NO.:</p>	<p>PRELIMINARY PLAN NOT FOR CONSTRUCTION</p>	<p>SEE CERTIFICATION SHEET DATE:</p> <p>STAMP BOX</p>	<p>SEE CERTIFICATION SHEET DATE:</p> <p>STAMP BOX</p>	<p>STANDARD DESIGN DRAWINGS BRIDGE RAILINGS</p> <p>PEDESTRIAN RAILING DETAILS 2 OF 2</p>	<p>PLAN REF NO</p> <p>SHEET OF SHEETS</p>
<p>PLOT DATE: 07-Oct-2025 PLOT TIME: 3:13:49 PM PLOTTED BY: deboejak FILE PATH: pw://projectstore.wsdot.wa.gov:WSDOT/Documents/_HQ/Bridge & Structures/Bridge Design/_Design Standards/Standard Drawings and Details/Barriers and Railings/Bridge Railings_Pedestrian and BP/_DGN/10.5-A4-2_Pedestrian Railing Details 2 of 2.dgn</p>						