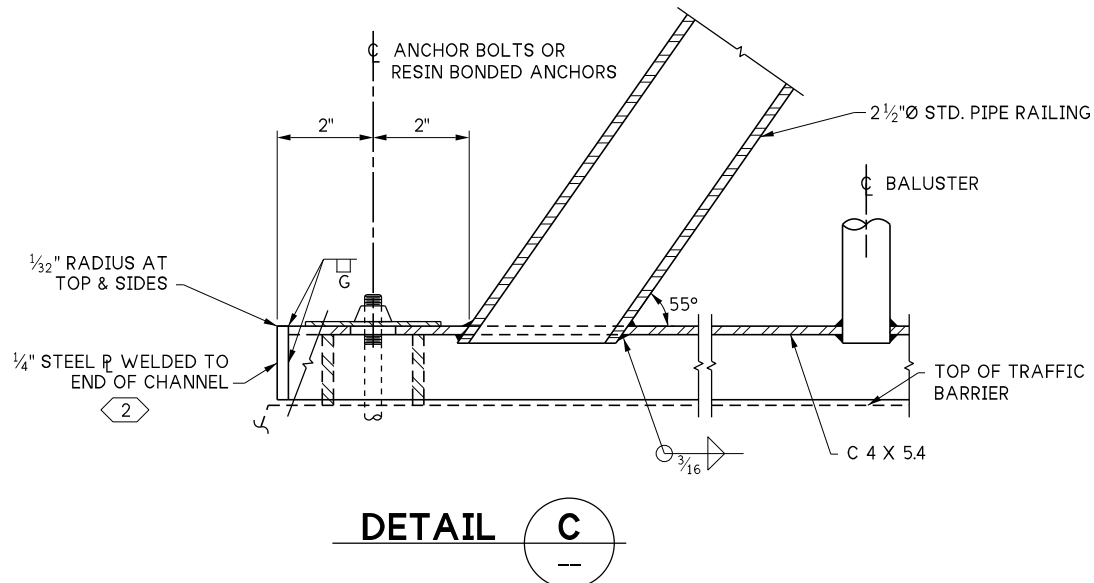
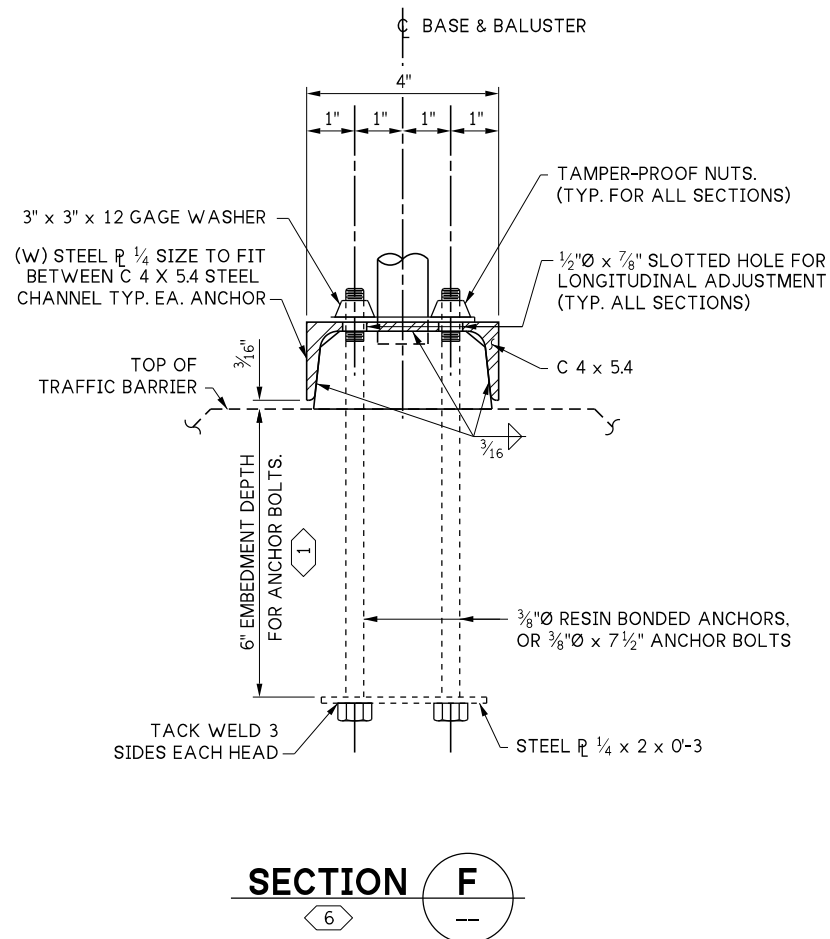


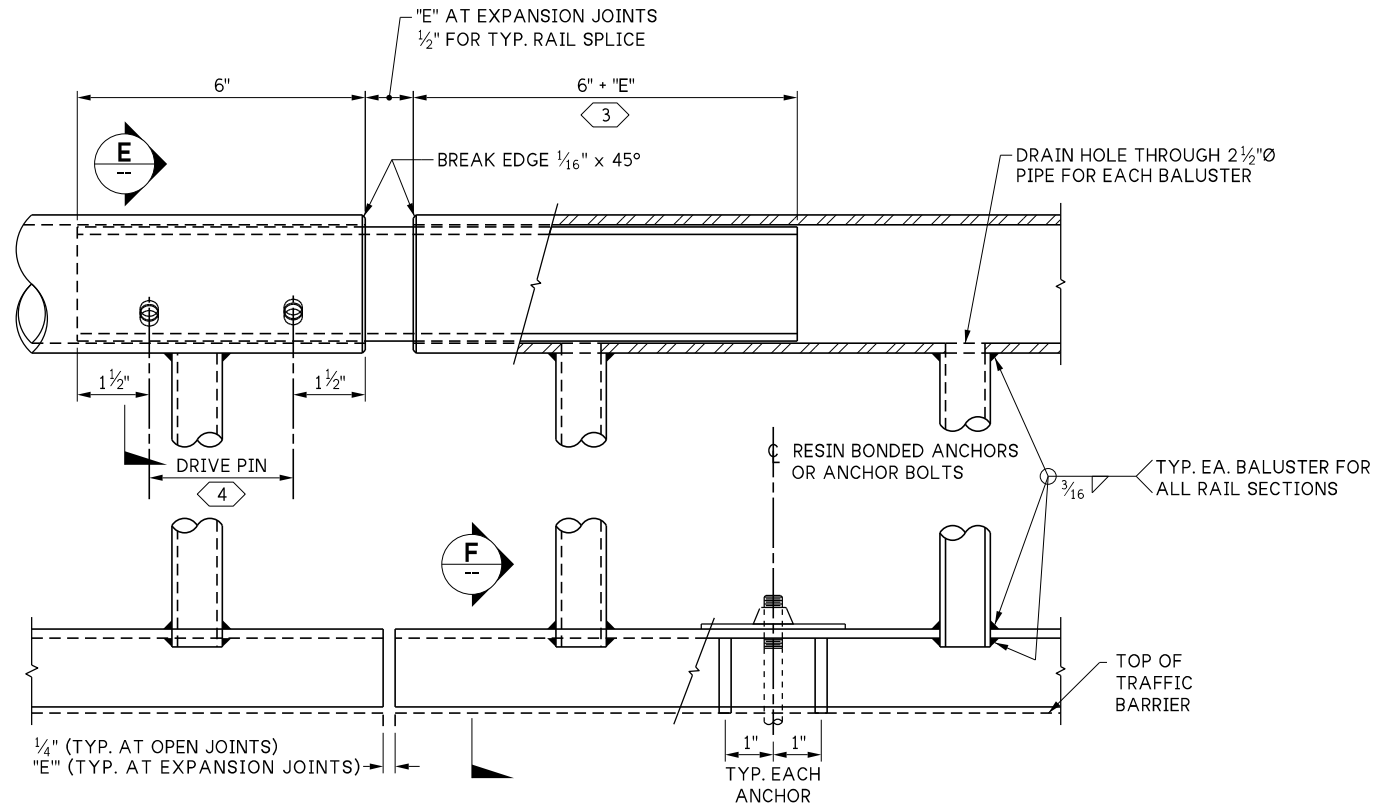
LAST REVISED: 06/06/2025



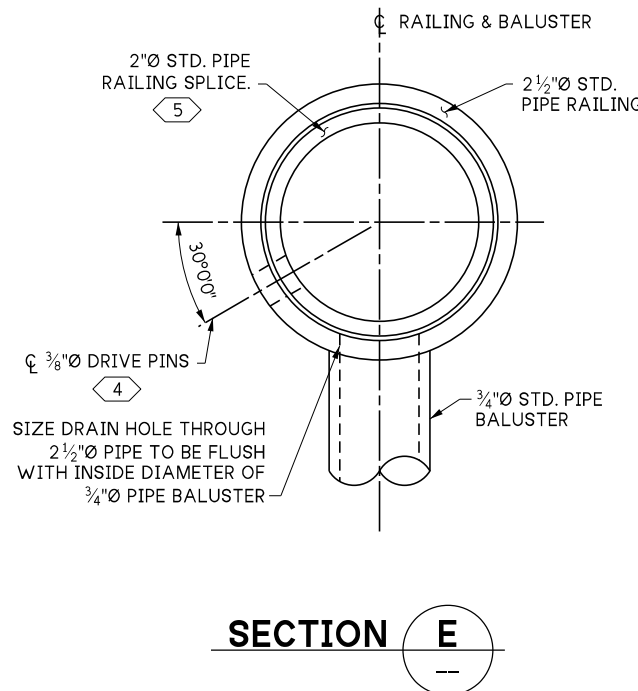
DETAIL C



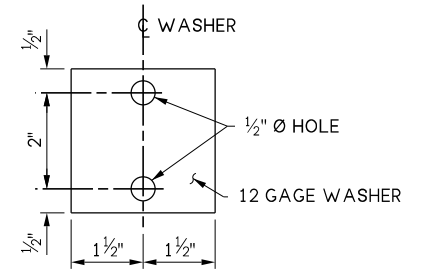
SECTION F



RAIL SPLICE DETAIL

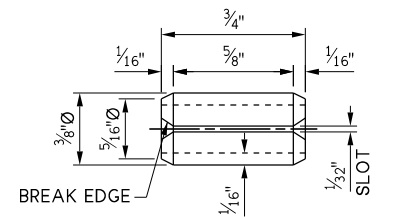


SECTION E



WASHER DETAIL

HOT DIP GALVANIZE AFTER FABRICATION



DRIVE PIN DETAIL

SLOTTED TYPE SPRING PIN (ANSI B18.8.2)

KEY NOTES:

- 1 FOR RESIN BONDED ANCHORS USE MFR'S RECOMMENDATION.
- 2 WELD BEFORE GALVANIZING.
- 3 "E" DIMENSION EQUALS MAX. OPENING OR CLOSING OF CONC. RAIL BASE AT EXPANSION JOINTS.
- 4 LOCATE ON OPPOSITE SIDE OF TRAFFIC. DRIVE PINS SHALL BE DRIVEN FLUSH WITH THE OUTSIDE FACE OF THE RAILING.
- 5 DRILL 3/8"Ø HOLE FOR 3/8"Ø DRIVE PIN AT LOCATION SHOWN.
- 6 ANCHOR BOLTS SHALL BE POSITIONED IN A JIG DURING WELDING.

10.5-A 3-2

FILE NAME	10.5-A3-2_Bridge Railing Type BP Steel Details 2 of 2.dgn		
BRIDGE DES. ENG.			
BRIDGE PROJ. ENG.			
SUPERVISOR			
DESIGNED BY			
CHECKED BY			
ENTERED BY			
PRELIM. PLAN BY			
ARCH. / SPEC.			
	REVISION	DATE	BY

REGION NO.	STATE
10	WASH
JOB NUMBER	
CONTRACT NO.	

WSDOT

PRELIMINARY PLAN
NOT FOR CONSTRUCTION

SEE CERTIFICATION SHEET DATE	SEE CERTIFICATION SHEET DATE
STAMP BOX	STAMP BOX

STANDARD DESIGN DRAWINGS BRIDGE RAILINGS		PLAN REF NO
BRIDGE RAILING TYPE S-BP-22 DETAILS 2 OF 2		SHEET OF SHEETS