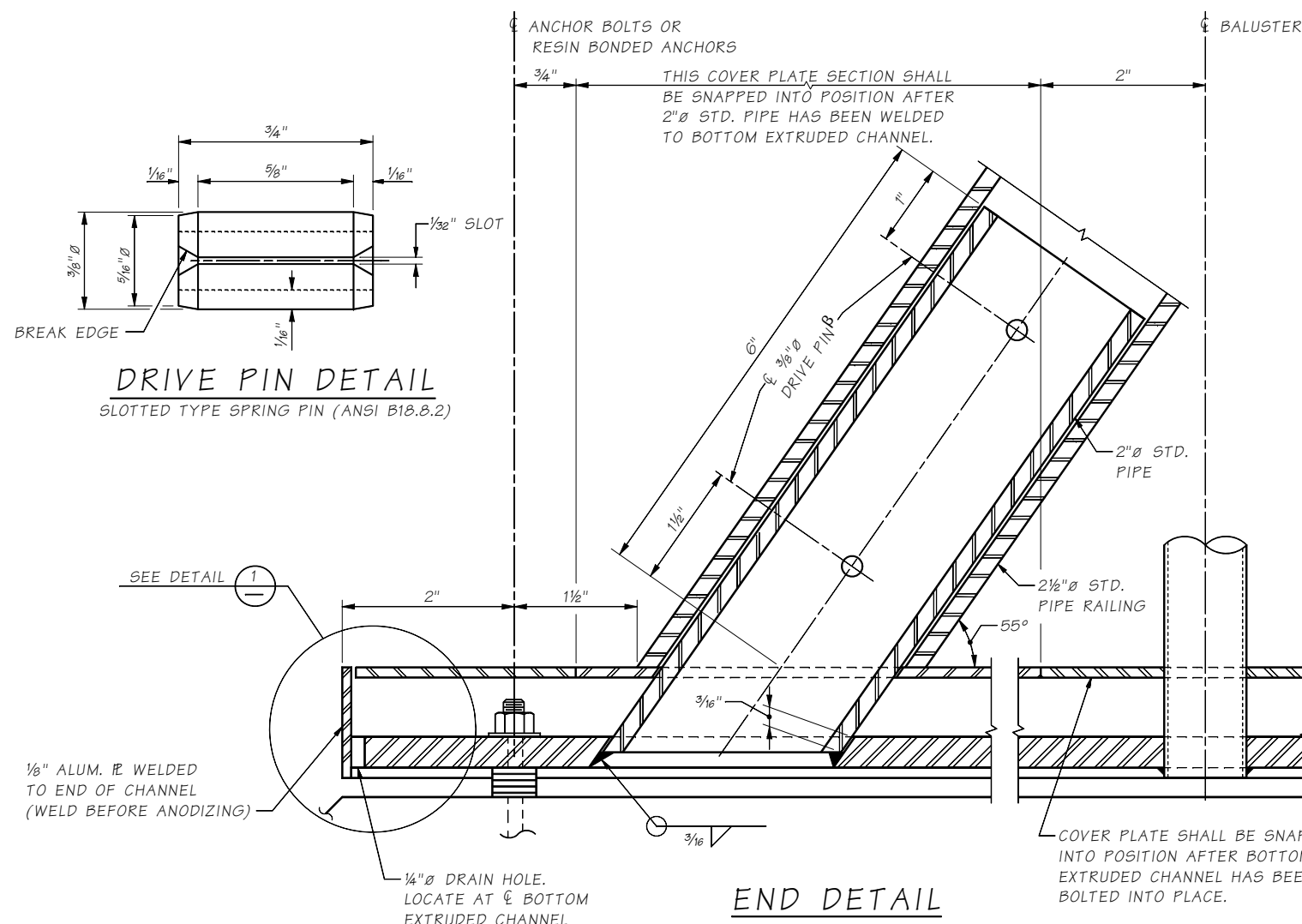
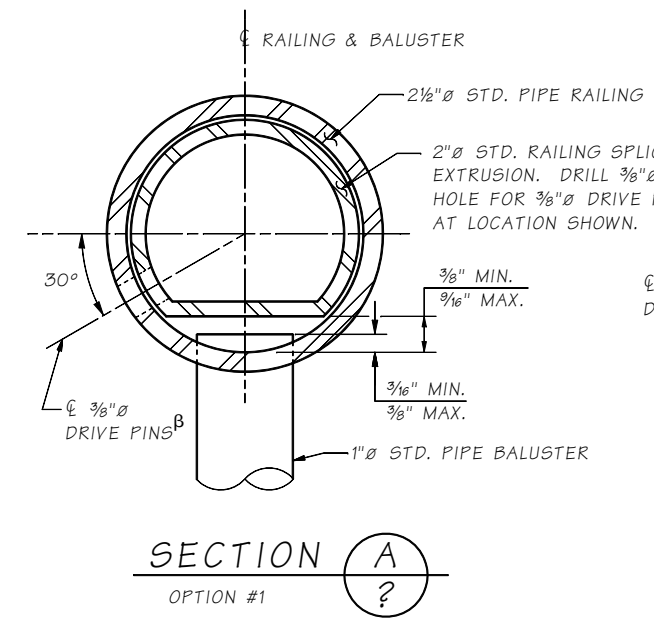
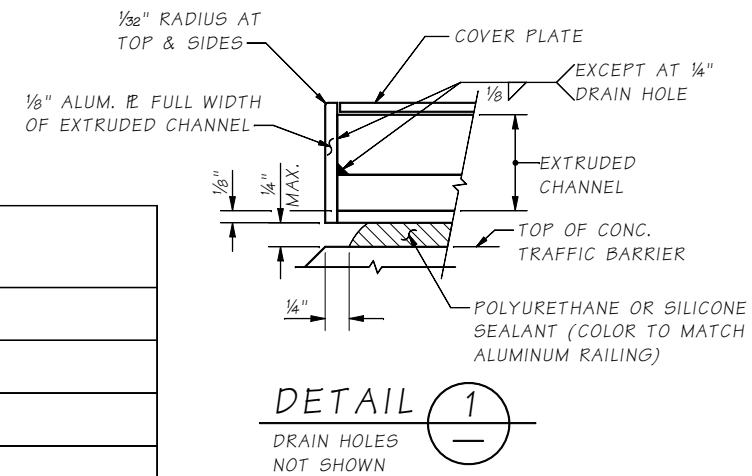


Last revised on : 11/19/2019

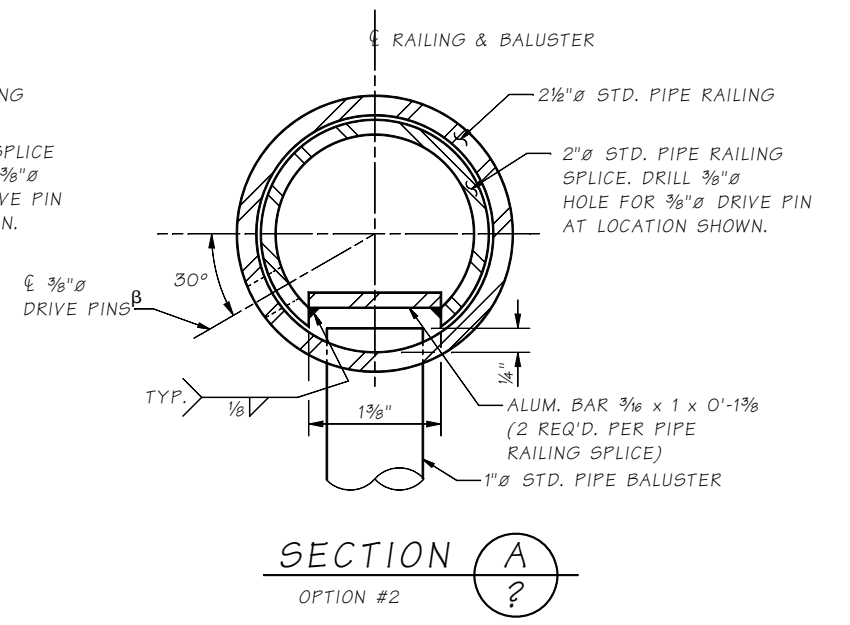
JOB NO. 10.5-A2-2



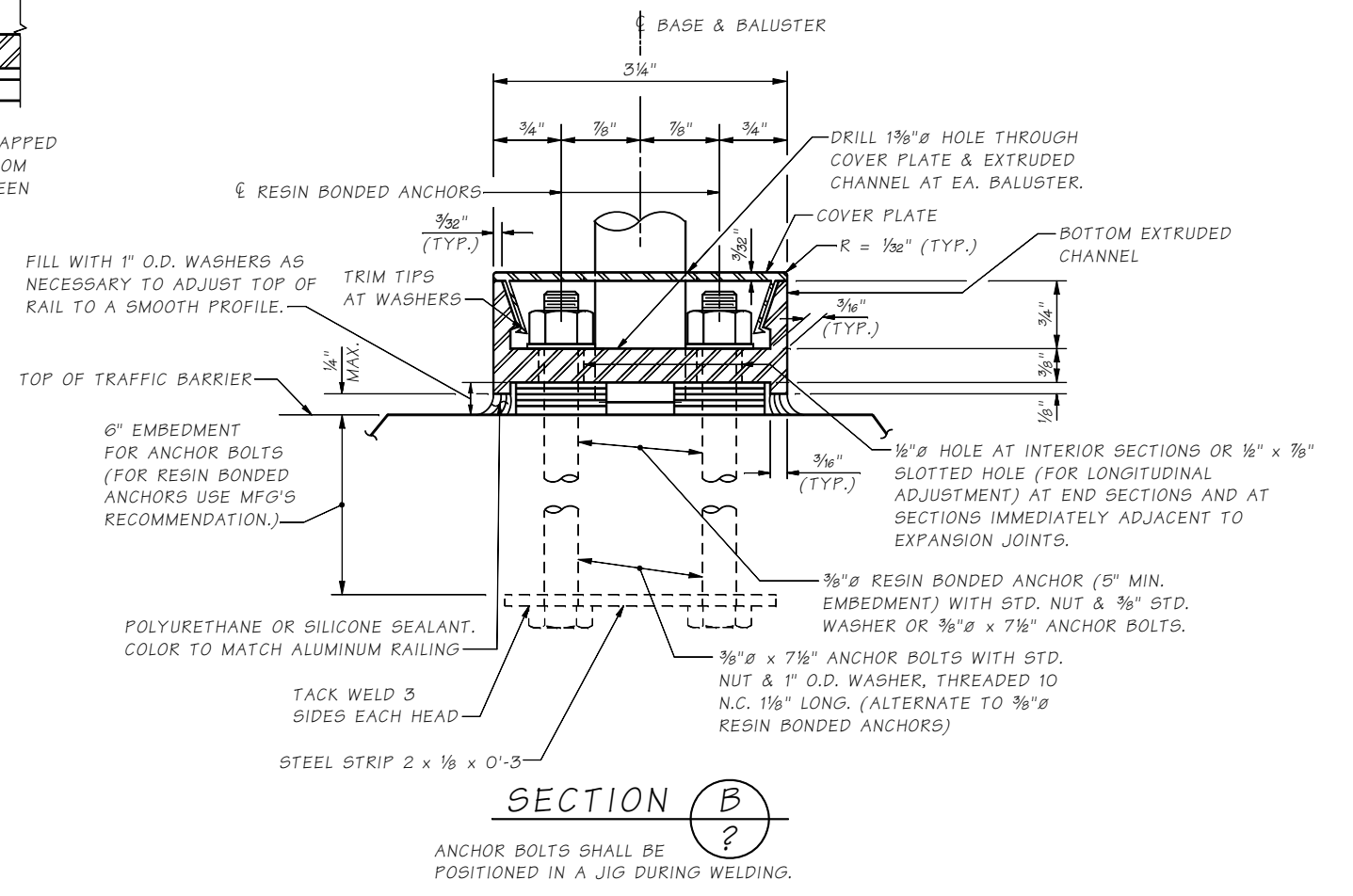
MAT'L	PART	MATERIAL SPECIFICATION
ALUMINUM	RAILS & BALUSTERS	ASTM B221-6005-T5, 6005A-T5 OR ASTM B241-6061-T6
ALUMINUM	EXTRUDED CHANNELS, COVER PLATES & BAR	ASTM B221-6005-T5 OR 6005A-T5
ALUMINUM	STRIP	ASTM B221-6005-T5
STEEL	ANCHOR BOLTS, NUTS & WASHERS	STANDARD SPECIFICATION SECTION 9-06.5(4) GR. 36 (GALVANIZE IN ACCORDANCE WITH AASHTO SPECIFICATION M 232)
STEEL	DRIVE PINS	ASTM A276 OR A240 TYPE 302 STAINLESS STEEL



β LOCATE ON OPPOSITE SIDE OF TRAFFIC. DRIVE PINS SHALL BE DRIVEN FLUSH WITH THE OUTSIDE FACE OF THE RAILING.



β LOCATE ON OPPOSITE SIDE OF TRAFFIC. DRIVE PINS SHALL BE DRIVEN FLUSH WITH THE OUTSIDE FACE OF THE RAILING.



Bridge Design Engr.	M:STANDARDS\BP Rail\BP2.MAN	REGION NO.	STATE	FED. AID PROJ. NO.	SHEET NO.	TOTAL SHEETS
Supervisor		10	WASH.			
Designed By		JOB NUMBER				
Checked By						
Detailed By						
Bridge Projects Engr.						
Prelim. Plan By						
Architect/Specialist	DATE	REVISION	BY	APPD		

Mon Dec 02 11:06:48 2019

BRIDGE AND STRUCTURES OFFICE



STANDARD RAILINGS

BRIDGE RAILING TYPE BP
DETAILS 2 OF 2

BRIDGE SHEET NO.
SHEET
OF
SHEETS