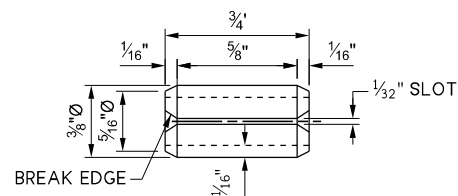
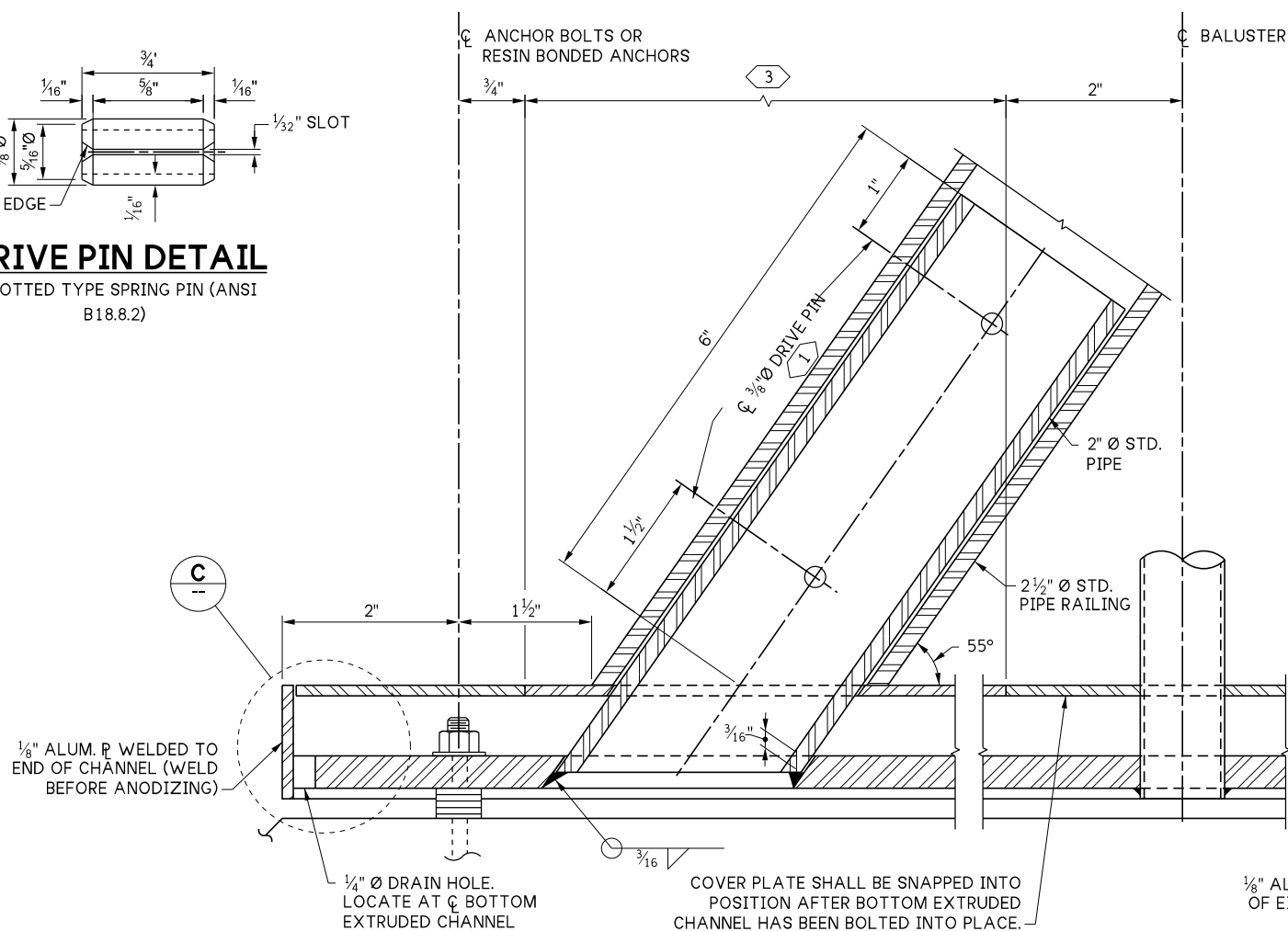


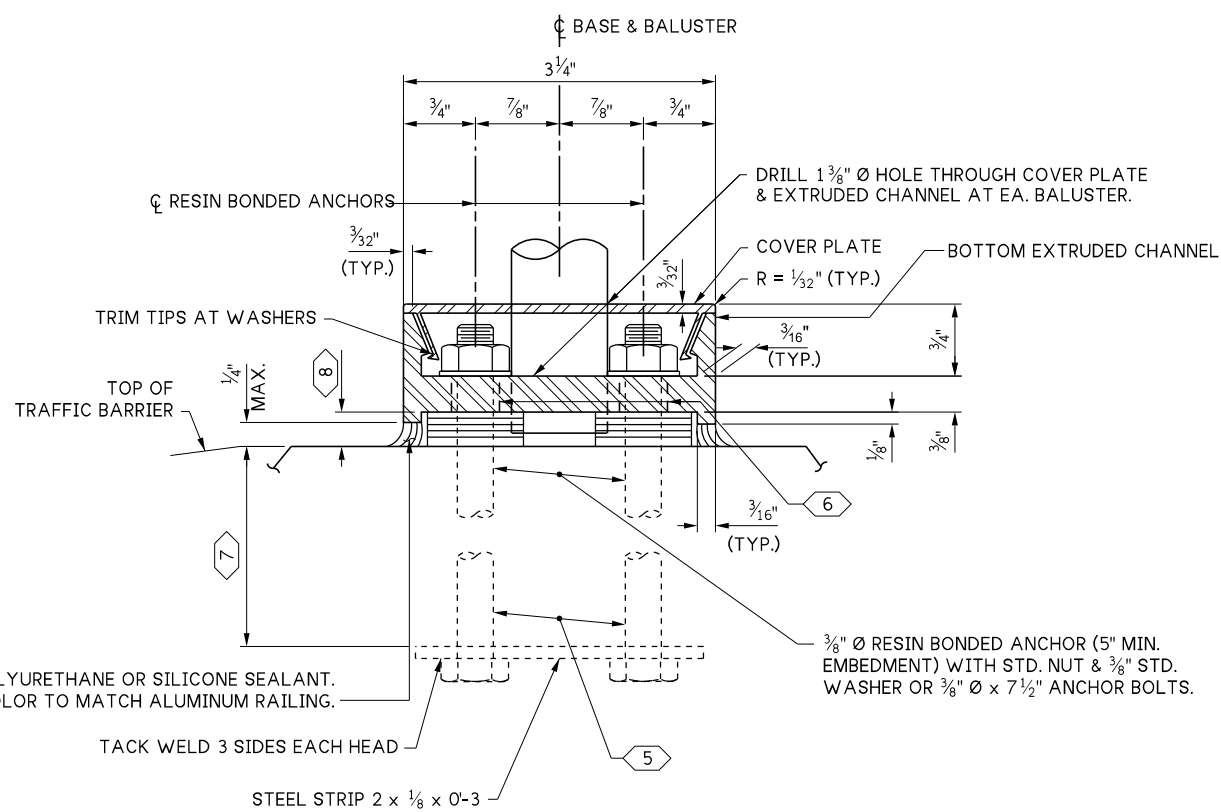
LAST REVISED: 04/11/2025



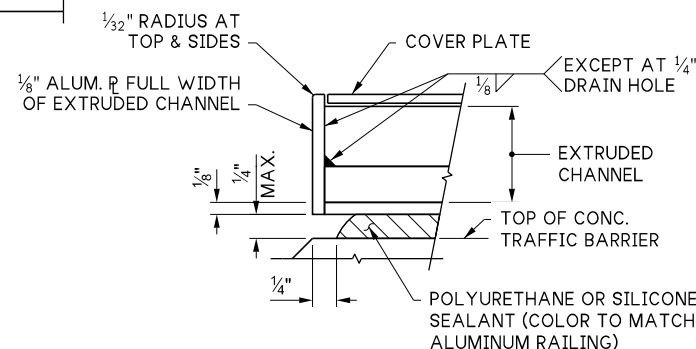
DRIVE PIN DETAIL
SLOTTED TYPE SPRING PIN (ANSI B18.8.2)



END DETAIL



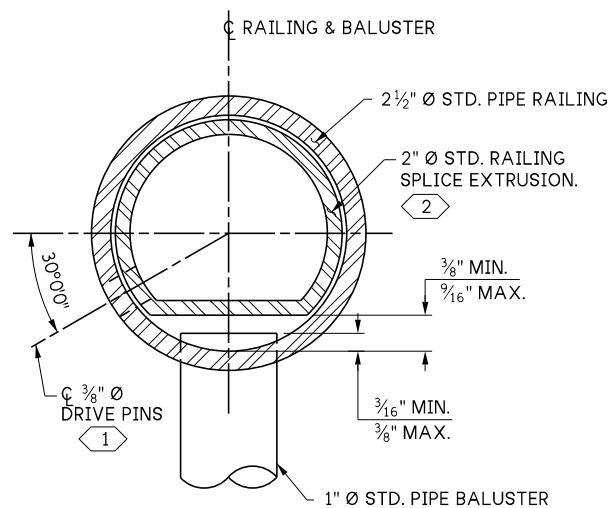
SECTION B



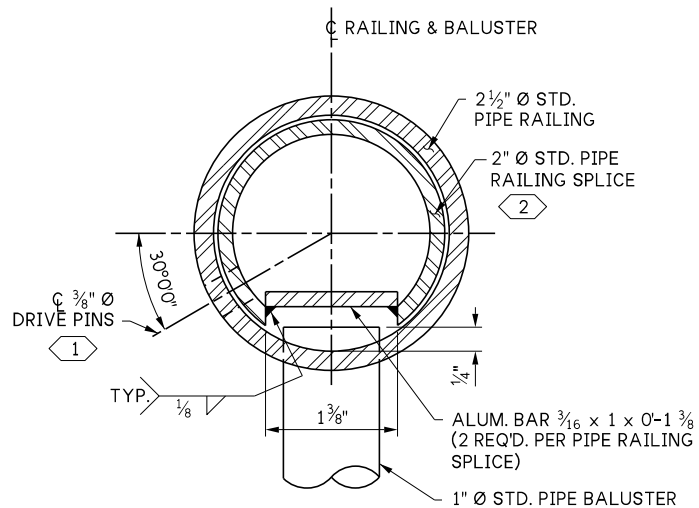
DETAIL C

MATERIAL SPECIFICATION TABLE

MATL	PART	MATERIAL SPECIFICATION
ALUMINUM	RAILS & BALUSTERS	ASTM B221-6005-T5, 6005A-T5 OR ASTM B241-6061-T6
	EXTRUDED CHANNELS, COVER PLATES & BAR	ASTM B221-6005-T5 OR 6005A-T5
STEEL	STRIP	ASTM B221-6005-T5
	ANCHOR BOLTS, NUTS & WASHERS	STANDARD SPECIFICATION SECTION 9-06.5(4) GR. 36 (GALVANIZE IN ACCORDANCE WITH AASHTO SPECIFICATION, M 232)
	DRIVE PINS	ASTM A276 OR A240 TYPE 302 STAINLESS STEEL



SECTION A
OPTION #1



SECTION A
OPTION #2

KEY NOTES:

- ① LOCATE ON OPPOSITE SIDE OF TRAFFIC. DRIVE PINS SHALL BE DRIVEN FLUSH WITH THE OUTSIDE FACE OF THE RAILING.
- ② DRILL 3/8" Ø HOLE FOR 3/8" Ø DRIVE PIN AT LOCATION SHOWN.
- ③ THIS COVER PLATE SECTION SHALL BE SNAPPED INTO POSITION AFTER 2" Ø STD. PIPE HAS BEEN WELDED TO BOTTOM EXTRUDED CHANNEL.
- ④ ANCHOR BOLTS SHALL BE POSITIONED IN A JIG DURING WELDING.
- ⑤ 3/8" Ø x 7 1/2" ANCHOR BOLTS WITH STD. NUT & 1" O.D. WASHER, THREADED 10 N.C. 1 1/8" LONG. ALTERNATE TO 3/8" Ø RESIN BONDED ANCHORS.
- ⑥ 1/2" Ø HOLE AT INTERIOR SECTIONS OR 1/2" x 7/8" SLOTTED HOLE (FOR LONGITUDINAL ADJUSTMENT) AT END SECTIONS AND AT SECTIONS IMMEDIATELY ADJACENT TO EXPANSION JOINTS.
- ⑦ 6" EMBEDMENT FOR ANCHOR BOLTS (FOR RESIN BONDED ANCHORS US MFR. RECOMMENDATION.)
- ⑧ FILL WITH 1" O.D. WASHERS AS NECESSARY TO ADJUST TOP OF RAIL TO A SMOOTH PROFILE.

10.5-A2-2

FILE NAME	10.5-A2-2_Bridge Railing Type BP Details 2 of 2.dgn		
BRIDGE DES. ENG.			
BRIDGE PROJ. ENG.			
SUPERVISOR			
DESIGNED BY			
CHECKED BY			
ENTERED BY			
PRELIM. PLAN BY			
ARCH. / SPEC.			
	REVISION	DATE	BY

REGION NO.	STATE
10	WASH
JOB NUMBER	
CONTRACT NO.	



SEE CERTIFICATION SHEET DATE	SEE CERTIFICATION SHEET DATE
STAMP BOX	STAMP BOX

STANDARD DESIGN DRAWINGS BRIDGE RAILINGS	PLAN REF NO
BRIDGE RAILING TYPE BP-22 DETAILS 2 OF 2	SHEET OF SHEETS