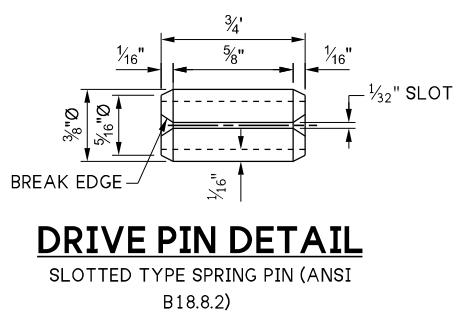
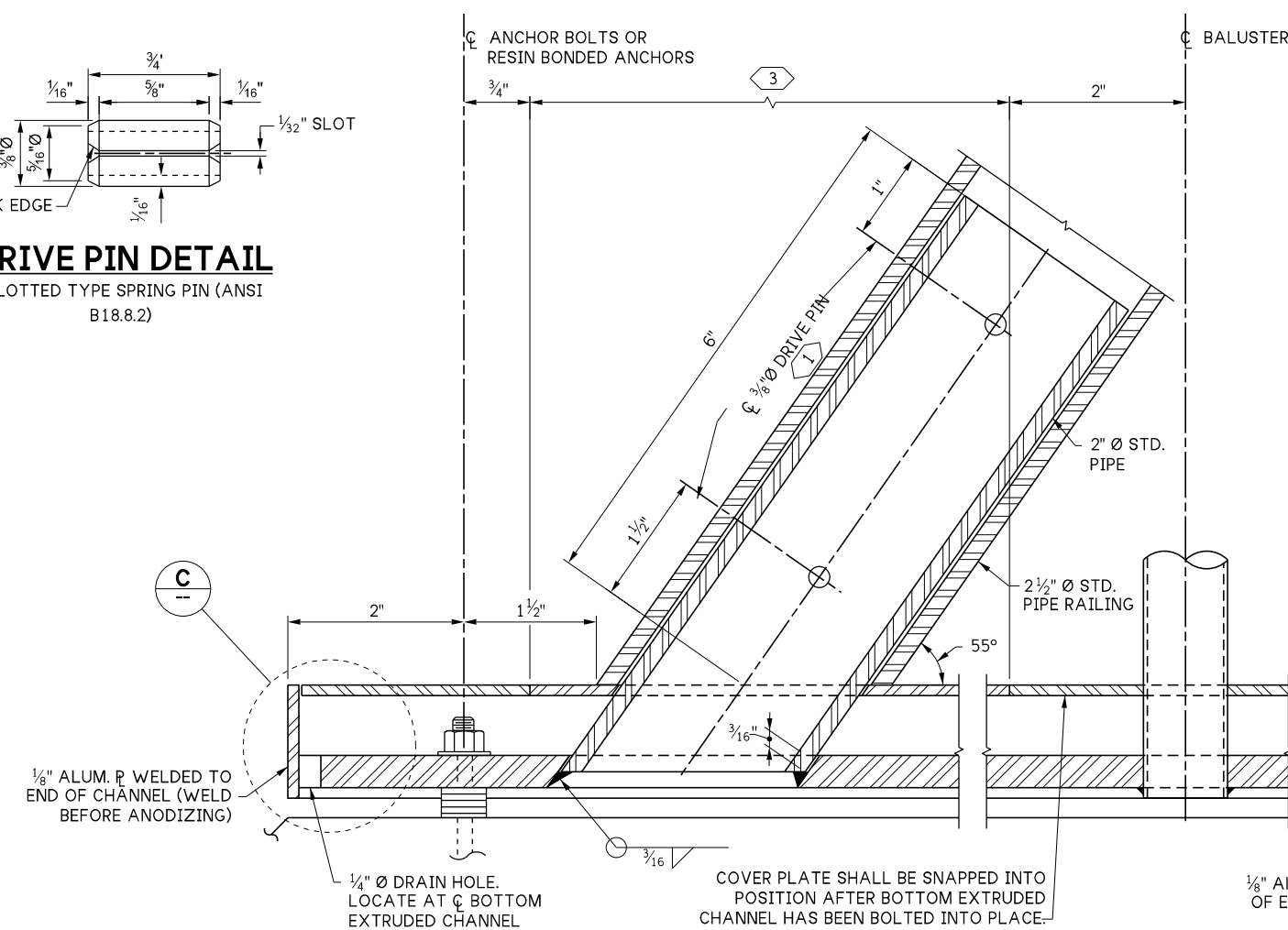


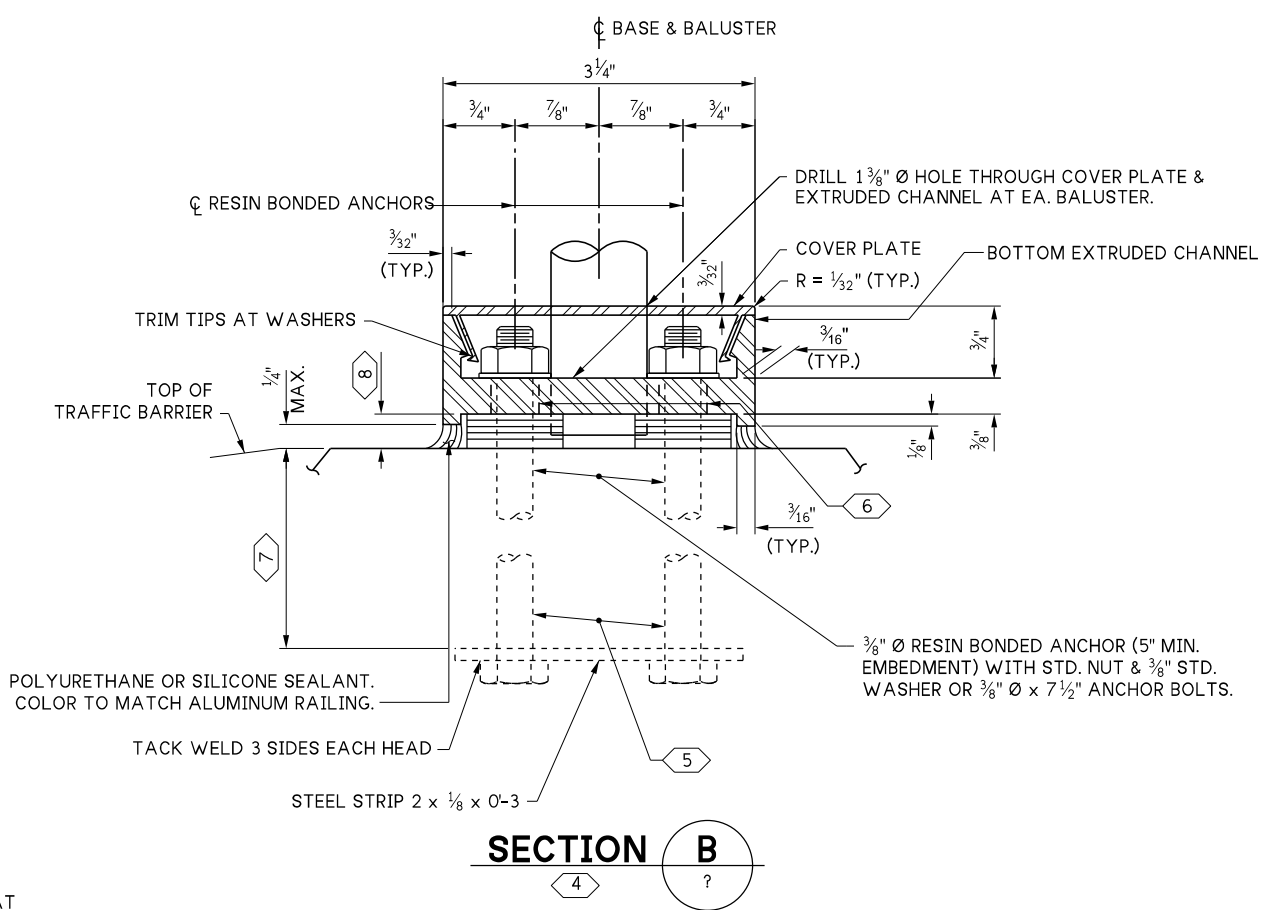
LAST REVISED: 04/10/2025



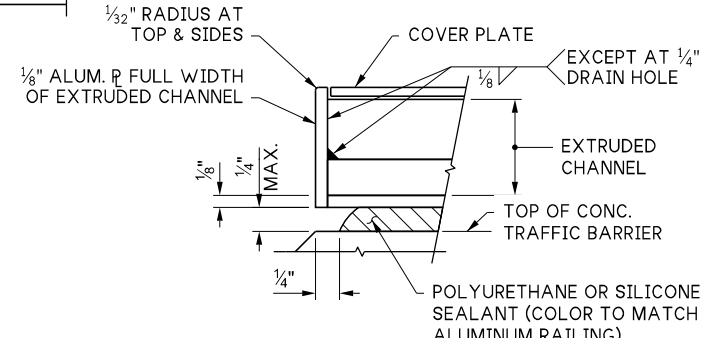
DRIVE PIN DETAIL
SLOTTED TYPE SPRING PIN (ANSI B18.8.2)



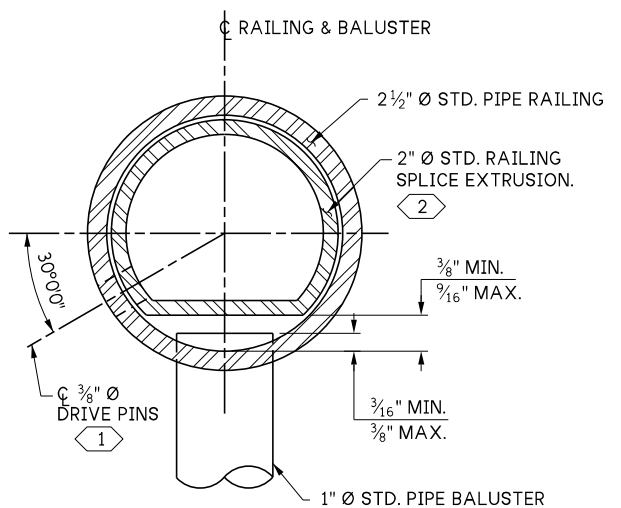
END DETAIL



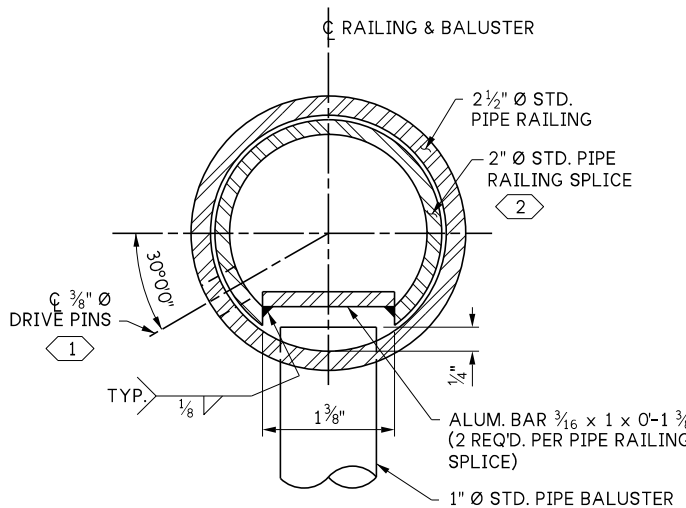
SECTION B



DETAIL C
DRAIN HOLES NOT SHOWN



SECTION A
OPTION #1



SECTION A
OPTION #2

MATERIAL SPECIFICATION TABLE		
MATL	PART	MATERIAL SPECIFICATION
ALUMINUM	RAILS & BALUSTERS	ASTM B221-6005-T5, 6005A-T5 OR ASTM B241-6061-T6
	EXTRUDED CHANNELS, COVER PLATES & BAR	ASTM B221-6005-T5 OR 6005A-T5
STEEL	STRIP	ASTM B221-6005-T5
	ANCHOR BOLTS, NUTS & WASHERS	STANDARD SPECIFICATION SECTION 9-06.5(4) GR. 36 (GALVANIZE IN ACCORDANCE WITH AASHTO SPECIFICATION, M 232)
	DRIVE PINS	ASTM A276 OR A240 TYPE 302 STAINLESS STEEL

KEY NOTES:

- 1 LOCATE ON OPPOSITE SIDE OF TRAFFIC. DRIVE PINS SHALL BE DRIVEN FLUSH WITH THE OUTSIDE FACE OF THE RAILING.
- 2 DRILL 3/8" Ø HOLE FOR 3/8" Ø DRIVE PIN AT LOCATION SHOWN.
- 3 THIS COVER PLATE SECTION SHALL BE SNAPPED INTO POSITION AFTER 2" Ø STD. PIPE HAS BEEN WELDED TO BOTTOM EXTRUDED CHANNEL.
- 4 ANCHOR BOLTS SHALL BE POSITIONED IN A JIG DURING WELDING.
- 5 3/8" Ø x 7 1/2" ANCHOR BOLTS WITH STD. NUT & 1" O.D. WASHER, THREADED 10 N.C. 1 1/8" LONG. ALTERNATE TO 3/8" Ø RESIN BONDED ANCHORS.
- 6 1/2" Ø HOLE AT INTERIOR SECTIONS OR 1/2" x 7/8" SLOTTED HOLE (FOR LONGITUDINAL ADJUSTMENT) AT END SECTIONS AND AT SECTIONS IMMEDIATELY ADJACENT TO EXPANSION JOINTS.
- 7 6" EMBEDMENT FOR ANCHOR BOLTS (FOR RESIN BONDED ANCHORS US MFR. RECOMMENDATION.)
- 8 FILL WITH 1" O.D. WASHERS AS NECESSARY TO ADJUST TOP OF RAIL TO A SMOOTH PROFILE.

10.5-A 1-2

<p>FILE NAME: 10.5-A 1-2_Bridge Railing Type Pedestrian Details 2 of 2.dgn</p> <p>BRIDGE DES. ENG.</p> <p>BRIDGE PROJ. ENG.</p> <p>SUPERVISOR</p> <p>DESIGNED BY</p> <p>CHECKED BY</p> <p>ENTERED BY</p> <p>PRELIM. PLAN BY</p> <p>ARCH. / SPEC.</p>	<p>REGION NO. 10</p> <p>STATE WASH</p> <p>JOB NUMBER</p> <p>CONTRACT NO.</p>	<p>PRELIMINARY PLAN NOT FOR CONSTRUCTION</p>	<p>SEE CERTIFICATION SHEET DATE</p> <p>SEE CERTIFICATION SHEET DATE</p>	<p>STANDARD DESIGN DRAWINGS BRIDGE RAILINGS</p> <p>BRIDGE RAILING TYPE PEDESTRIAN DETAILS 2 OF 2</p>	<p>PLAN REF NO</p> <p>SHEET</p> <p>OF</p> <p>SHEETS</p>
<p>PLOT DATE: 07-Oct-2025 PLOT TIME: 1:36:04 PM PLOTTED BY: deboejak FILE PATH: pw://projectstore.wsdot.wa.gov:WSDOT/Documents/_HQ/Bridge & Structures/Bridge Design/_Design Standards/Standard Drawings and Details/Barriers and Railings/Bridge Railings_Pedestrian and BP/_DGN/10.5-A 1-2_Bridge Railing Type Pedestrian Details 2 of 2.dgn</p>					