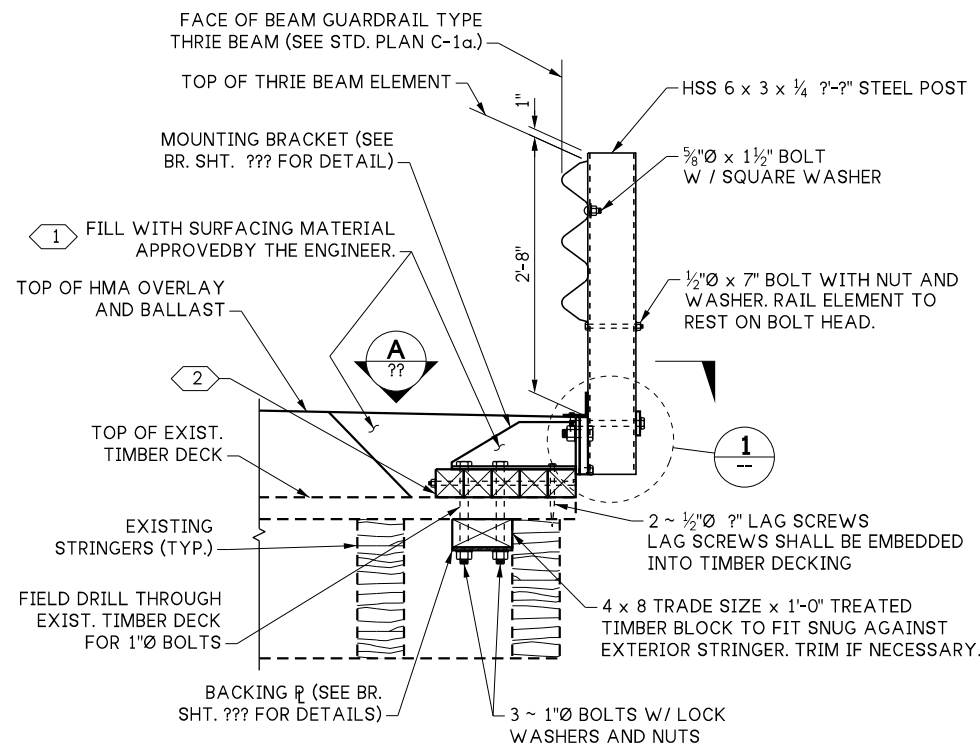
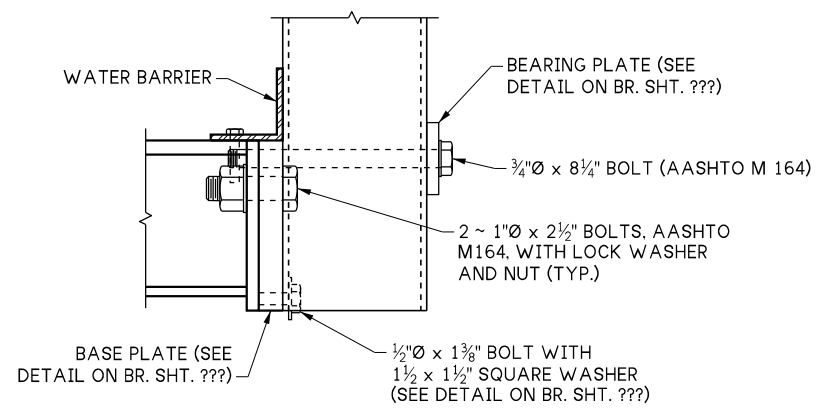


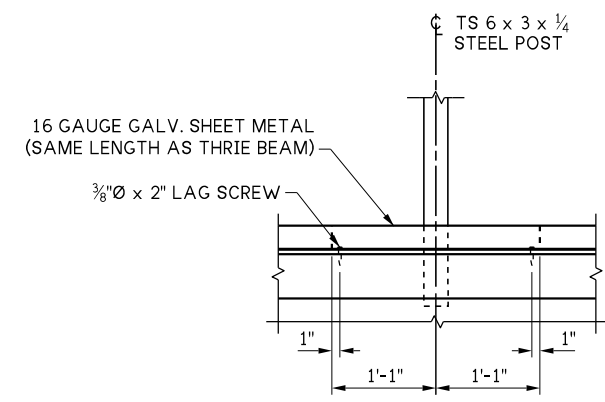
LAST REVISED: 06/16/2025



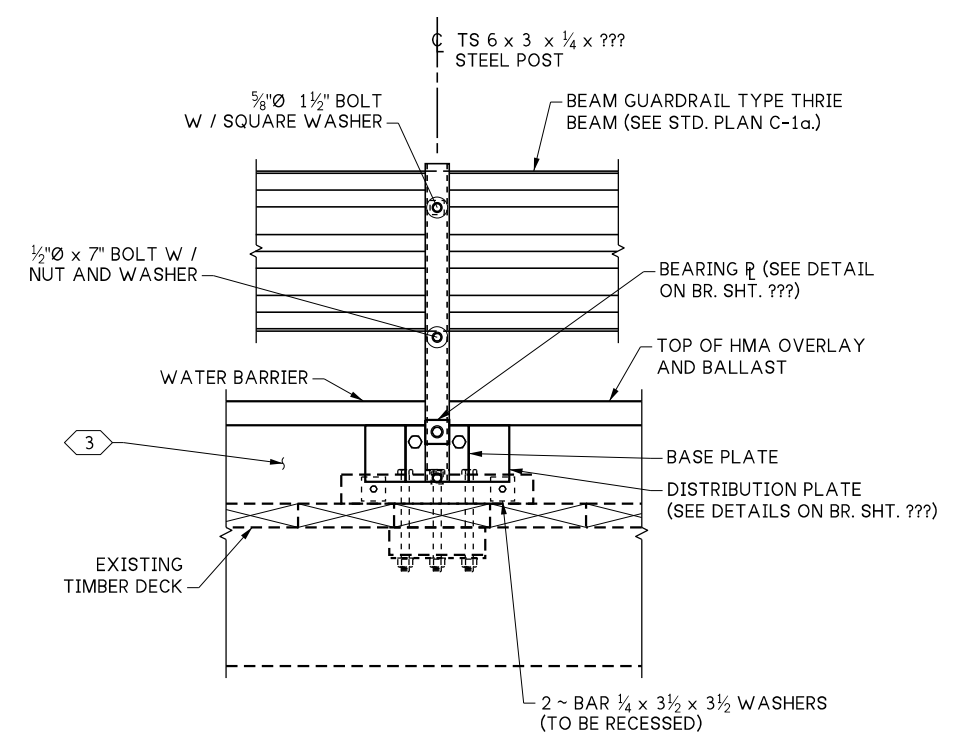
**GUARDRAIL POST ASSEMBLY**  
(???) ASSEMBLIES



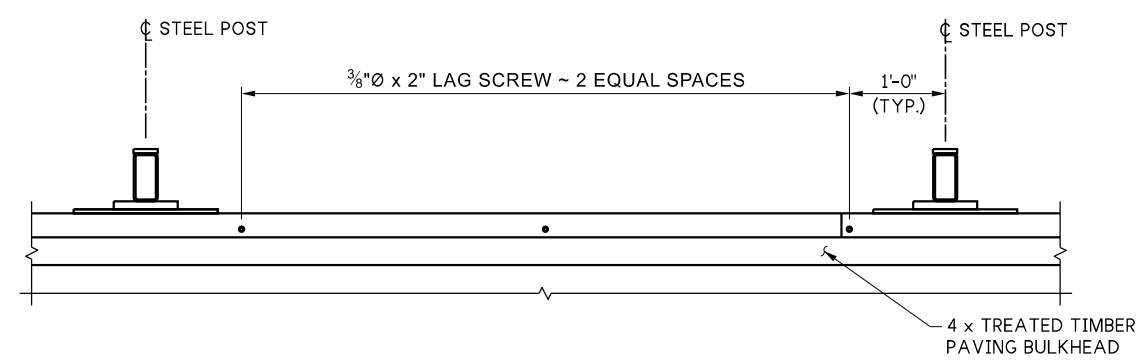
**DETAIL 1**



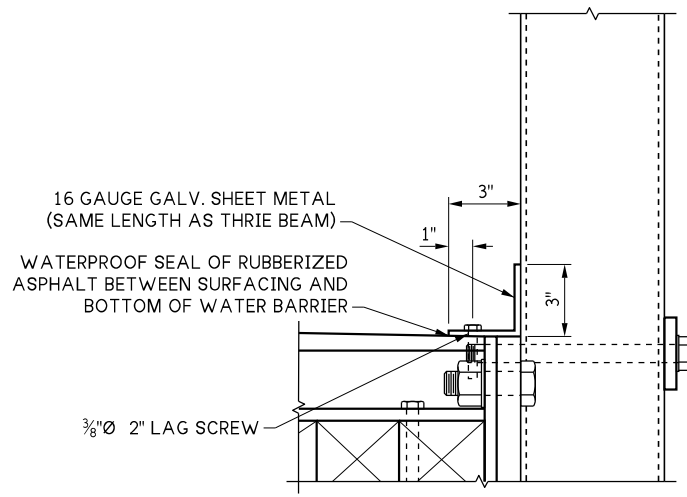
**WATER BARRIER SPLICE DETAIL**



**OUTSIDE ELEVATION AT TYPICAL GUARDRAIL POST**



**WATER BARRIER PLAN**



**WATER BARRIER DETAIL**

**KEY NOTES:**

- 1 THICKNESS OF SURFACING MATERIAL SHALL BE SUCH THAT THE TOP OF THE VERTICAL WEB OF THE MOUNTING BRACKET SHALL BE 1/2" BELOW WEARING COURSE SURFACE
- 2 3 1/2" X ?? TREATED TIMBER BLOCKING (TYP.) BLOCKING THICKNESS SHALL BE SUCH THAT THE TOP OF THE VERTICAL WEB OF THE MOUNTING BRACKET SHALL BE 1/2" BELOW WEARING COURSE SURFACE
- 3 3 1/2" X ?? TREATED TIMBER PAVING BULKHEAD CONTINUOUS BETWEEN STEEL MOUNTING BRACKETS. TRIM BULKHEAD HEIGHT TO MATCH EXISTING SURFACING DEPTH. FASTEN TO DECK WITH 1/2"Ø x ?? LAG SCREWS AT 2'-0" CTRS.

10.4-A 1-4

FILE NAME	10.4-A 1-4_WP Thrie Beam Retrofit SL1 - Details 1 of 2.dgn			
BRIDGE DES. ENG.				
BRIDGE PROJ. ENG.				
SUPERVISOR				
DESIGNED BY				
CHECKED BY				
ENTERED BY				
PRELIM. PLAN BY				
ARCH. / SPEC.				
	REVISION	DATE	BY	

REGION NO.	STATE
10	WASH
JOB NUMBER	
CONTRACT NO.	

**WSDOT**

PRELIMINARY PLAN  
NOT FOR CONSTRUCTION

SEE CERTIFICATION SHEET DATE	SEE CERTIFICATION SHEET DATE
STAMP BOX	STAMP BOX

STANDARD DESIGN DRAWINGS RAIL RETROFITS
WP THRIE BEAM RETROFIT SL1 - DETAILS 1 OF 2
PLAN REF NO
SHEET OF SHEETS