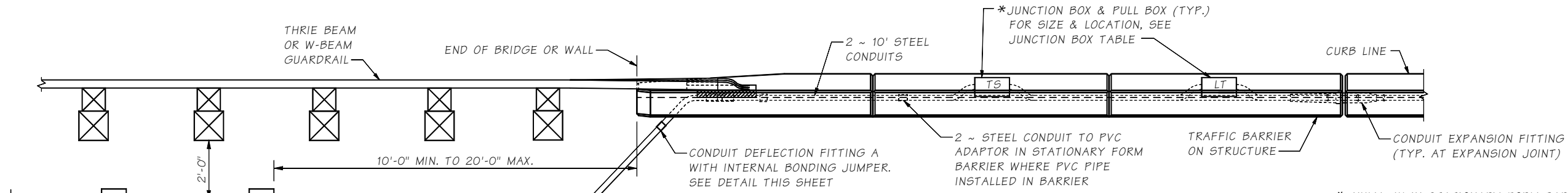


Last revised on : 4/5/2018

SR SHEET

10.4-A2-3



**PLAN
CONDUITS AND J-BOX
IN TRAFFIC BARRIER**

* NEMA 4X IN STATIONARY FORM BARRIER, OR NEMA 3R IN SLIP FORM BARRIER. MOUNT JUNCTION BOX SO COVER IS FLUSH WITH BARRIER, CAN BE RECESSED UP TO 1/8".

NOTE TO DESIGNERS
MODIFY THE FOLLOWING TO MATCH PROJECT REQUIREMENTS:
1. BARRIER END SECTION.
2. REMOVE GUARDRAIL IF NOT CONNECTED TO BRIDGE ITEM.
3. CONDUIT ALIGNMENT

JUNCTION BOX SIZED PER ELECTRICAL PLANS. LABEL JUNCTION BOX LIDS AS SHOWN (TYP.)

10' STEEL CONDUIT SECTION BETWEEN CONDUIT DEFLECTION FITTING A AND PVC CONDUIT IN STATIONARY FORM BARRIER

SECURE CONDUIT AND BOX TO REBAR TO PREVENT MOVEMENT

TOP OF ROADWAY AT CURB LINE

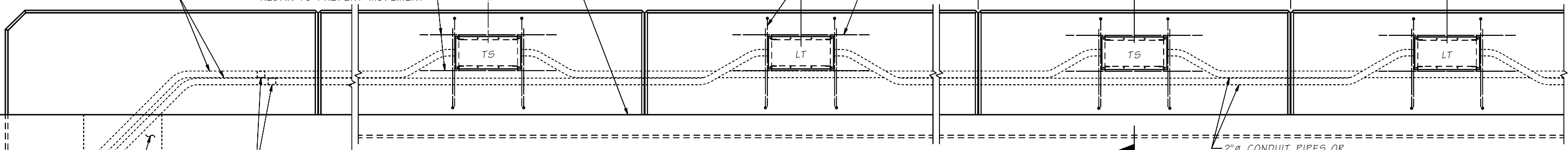
BUNDLE [R1] #5, [R2] #5 OR [R9] #5 ADJACENT TO EACH END OF JUNCTION BOX (TYP.)

#4 x 3'-6" (TYP.)

L (TYP.)

8'-0" MIN. (L TYP.)

2"Ø CONDUIT PIPES OR SIZE CONDUIT PER WIRING SCHEDULE



ELEVATION - CONDUITS & J-BOX IN TRAFFIC BARRIER

LABEL JUNCTION BOX COVER IN ACCORDANCE WITH STANDARD SPECIFICATION SECTION 9-29.2(4). ADJACENT JUNCTION BOXES ARE SHOWN CENTERED BETWEEN ADJACENT DUMMY JOINTS. IF THE DISTANCE BETWEEN ADJACENT DUMMY JOINTS IS 16'-0" OR GREATER, PLACE ADJACENT JUNCTION BOXES SYMMETRICALLY ON EITHER SIDE OF THE CENTER OF ONE DUMMY PANEL WHILE MAINTAINING 8'-0" MINIMUM BETWEEN CENTER LINES OF THE JUNCTION BOXES.

3'-0" LONG EXPANDED POLYSTYRENE SLEEVE AROUND CONDUIT. DUCT TAPE SEAMS AND ENDS TO SEAL AND PREVENT CONCRETE FROM BONDING WITH FITTING AND CONDUIT

WHERE CONDUIT IN A STRUCTURE IS ROUTED ACROSS A JOINT, WRAP STEEL CONDUIT PIPE FOR 1'-0" ON EACH SIDE OF JOINT. PIPE WRAP TAPE SHALL BE 2" WIDE, 20 MIL THICK, AND INSTALLED WITH A MINIMUM OF 1" OVERLAP.

1/2" PREMOLDED JOINT FILLER SEE STANDARD PLANS

WHERE CONDUIT IN A STRUCTURE IS ROUTED ACROSS A JOINT, WRAP STEEL CONDUIT PIPE FOR 1'-0" ON EACH SIDE OF JOINT. PIPE WRAP TAPE SHALL BE 2" WIDE, 20 MIL THICK, AND INSTALLED WITH A MINIMUM OF 1" OVERLAP.

3/4" POLYSTYRENE FOAM. WRAP 1 1/2 TIMES AROUND CONDUIT AND CONDUIT FITTING

SECTION B

BUNDLE 2 [R1] #5, 2 [R2] #5 OR 2 [R9] #5 ADJACENT TO EACH END OF JUNCTION BOX (TYP.)

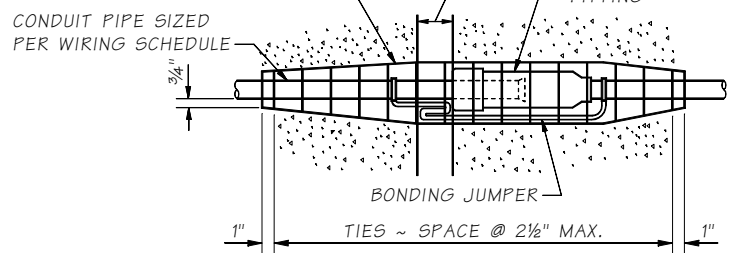
2 ~ STAINLESS STEEL MOUNTING TABS (TOP & BOT.)
*8" x 8" x 18" JUNCTION BOX

3/8"Ø POLYETHYLENE OR COPPER PIPE DRAIN

SECTION A

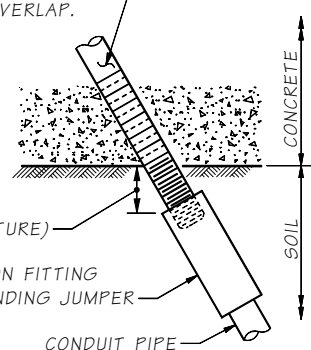
CONDUIT DEFLECTION FITTING B

CONDUIT FITTING - TYPE DX FOR DEFLECTION OF 30° AND 3/4" MOVEMENT. CONDUIT PIPES PLACED THROUGH RETAINING WALL TRAFFIC BARRIER SHALL BE FITTED WITH DEFLECTION FITTINGS AT A MAXIMUM SPACING OF 120'. THE DEFLECTION FITTINGS SHALL BE PLACED AT THE TRAFFIC BARRIER OPEN JOINT THAT COINCIDES WITH THE RETAINING WALL EXPANSION JOINT.



CONDUIT EXPANSION FITTING

CONDUIT FITTING - (TYPE AX FOR MOVEMENT OF ± 2") AT BRIDGE EXPANSION JOINTS



CONDUIT DEFLECTION FITTING A

CONDUIT FITTING - TYPE DX FOR DEFLECTION OF 30° AND 3/4" MOVEMENT. PLACE AT CONDUIT PIPE EXIT FROM STRUCTURE AND SHALL BE IN NEUTRAL STATE AFTER INSTALLATION.

Bridge Design Engr.	M:\STANDARDS\Traffic Barriers\Rehab\TB3-R.MAN	REGION NO.	STATE	FED. AID PROJ. NO.	SHEET NO.	TOTAL SHEETS
Supervisor		10	WASH.			
Designed By		JOB NUMBER				
Checked By						
Detailed By						
Bridge Projects Engr.						
Prelim. Plan By						
Architect/Specialist	DATE	REVISION	BY	APPD		

Mon Apr 16 13:56:16 2018

BRIDGE AND STRUCTURES OFFICE



STANDARD TRAFFIC BARRIERS

TRAFFIC BARRIER - SHAPE F REHABILITATION - DETAILS 3 OF 3

BRIDGE SHEET NO.
SHEET
OF
SHEETS