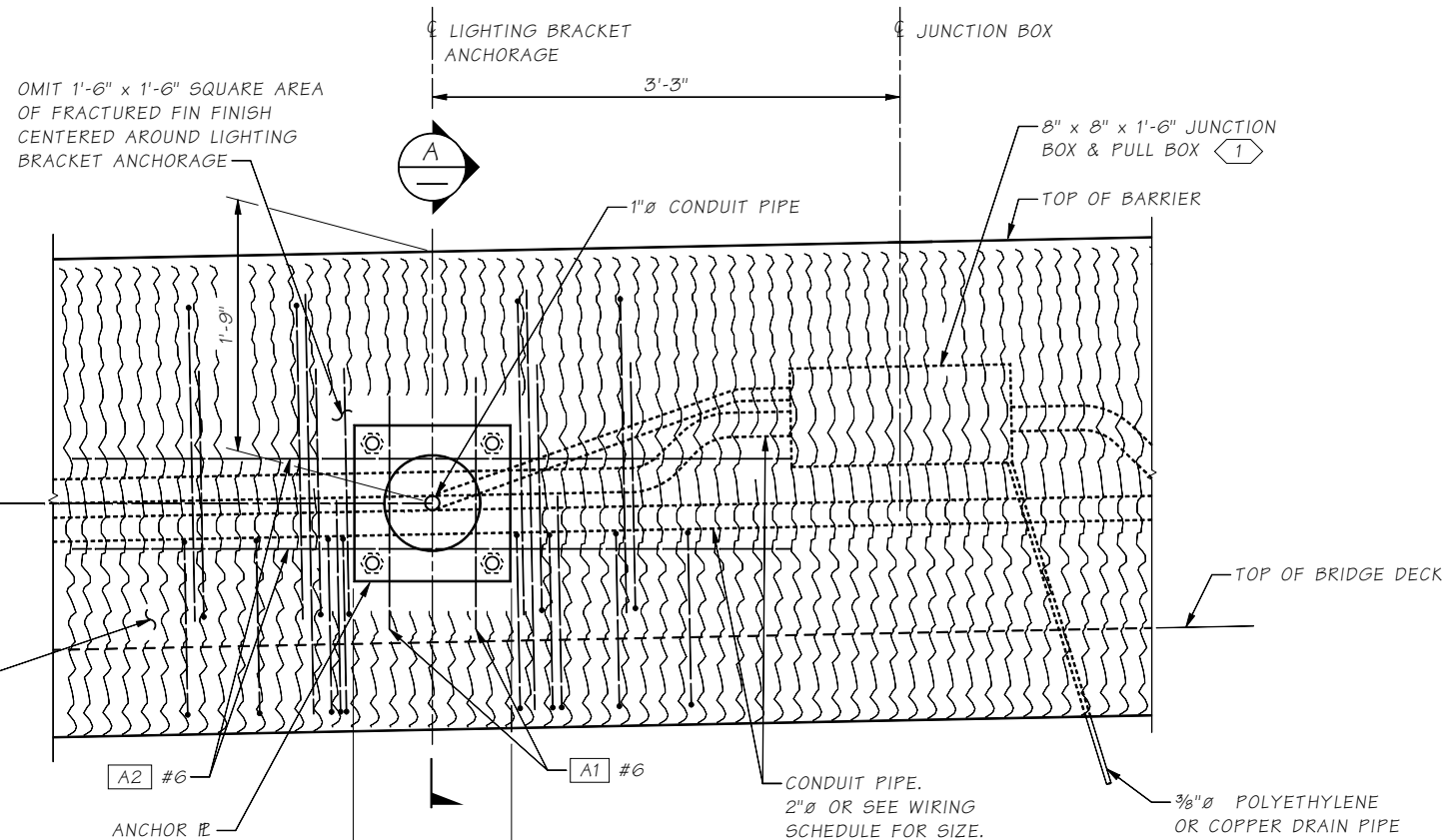


LAST REVISED: 7/31/2020

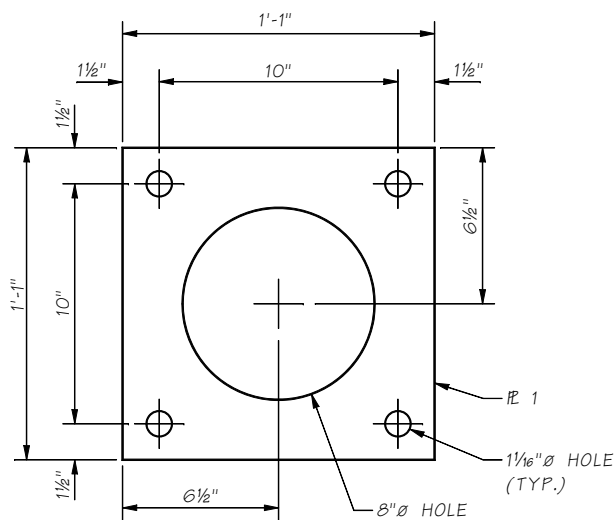
SHEET

JOB NO. 10.2-A7-1

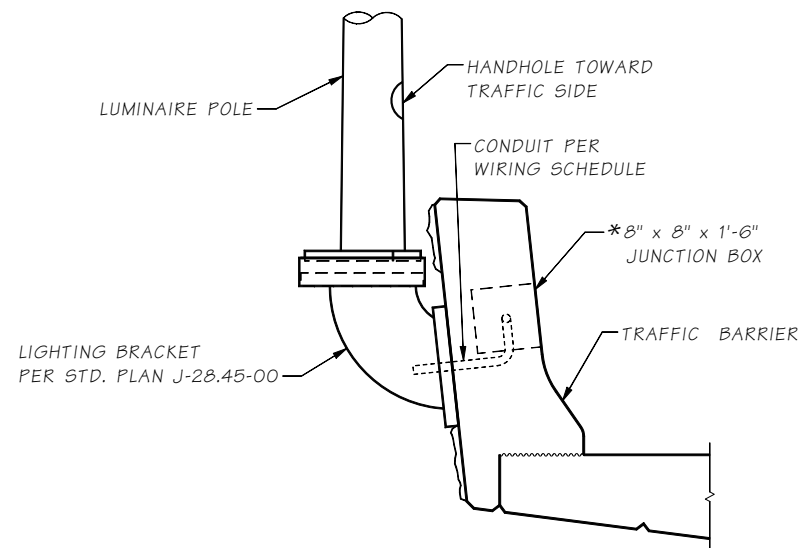


ELEVATION

S1, S2 AND R1 BARS THAT OCCUR IN THIS AREA ARE TO BE MOVED TO THE NEAREST EDGE OF THE ANCHOR PLATE.

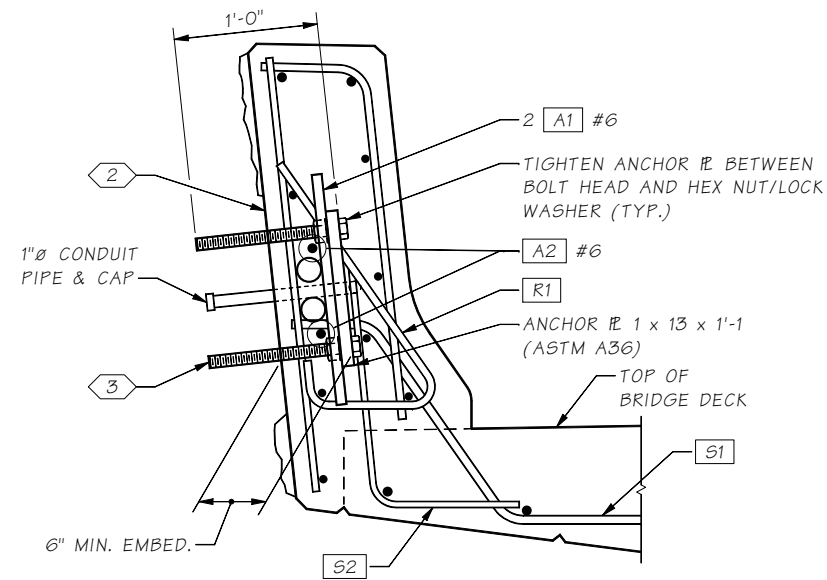


ANCHOR PLATE  
GALVANIZE PER AASHTO M 111



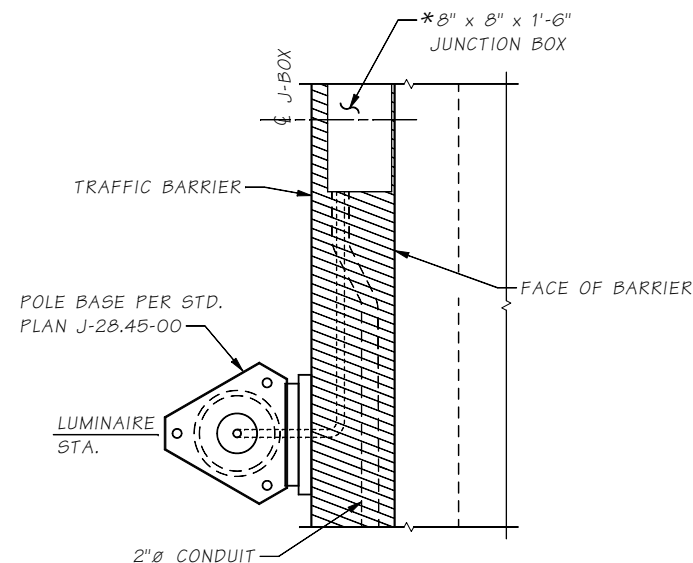
ELEVATION PROFILE  
LUMINAIRE SUPPORT

SHOWN FOR BRIDGE, WALLS ARE SIMILAR



SECTION A

SEE TRAFFIC BARRIER SHEETS FOR INFORMATION NOT SHOWN.



PLAN

ANCHORAGE BARLIST			
MARK #	SIZE	LENGTH	BEND TYPE
A1	6	1'-9"	STRAIGHT
A2	6	5'-0"	STRAIGHT

LUMINAIRE POLE LOCATIONS ON BRIDGE & WALLS	
STATION	OFFSET
XXX 0+000.000	0.000 RT.
XXX 0+000.000	0.000 RT.

LUMINAIRE NOTES:

1. INSTALL ALL CONDUIT RUNS SO THEY DRAIN TO A BRIDGE END OR PROVIDE DRAIN AT ALL LOW POINTS WITHIN CONDUIT RUN. SEE "TRAFFIC BARRIER SHEETS" FOR BARRIER DIMENSIONS.

NOTES:

- 1 NEMA 4X IN STATIONARY FORM BARRIER, OR NEMA 3R IN SLIP FORM BARRIER. MOUNT JUNCTION BOX SO COVER IS FLUSH WITH BARRIER, CAN BE RECESSED UP TO 1/8".
- 2 CHIP OR FORM FACE OF BARRIER FLUSH UNDER SUPPORT ELBOW BASE PLATE. APPLY EPOXY BONDING AGENT TO SURFACE TO ASSURE UNIFORM BEARING SURFACE. SEE STANDARD SPECIFICATION SECTION 9-26.1
- 3 1" H.S. BOLT THREADED FULL LENGTH WITH HARDENED LOCK WASHER AND HEAVY HEX NUT (TYP.). SEE STANDARD SPECIFICATION SECTION 9-29.6(5).

Bridge Design Engr.	M:\STANDARDS\Traffic Barriers\Luminaire\LUMANCHORAGE-TBF.man	REGION NO.	STATE	FED. AID PROJ. NO.	SHEET NO.	TOTAL SHEETS
Supervisor		10	WASH.			
Designed By		JOB NUMBER				
Checked By						
Detailed By						
Bridge Projects Engr.						
Prelim. Plan By						
Architect/Specialist		DATE	REVISION	BY	APPD	

Fri Jul 31 09:44:05 2020

BRIDGE AND STRUCTURES OFFICE



STANDARD TRAFFIC BARRIERS  
TRAFFIC BARRIER - SHAPE F  
LUMINAIRE ANCHORAGE DEATILS

BRIDGE SHEET NO.  
SHEET  
OF  
SHEETS