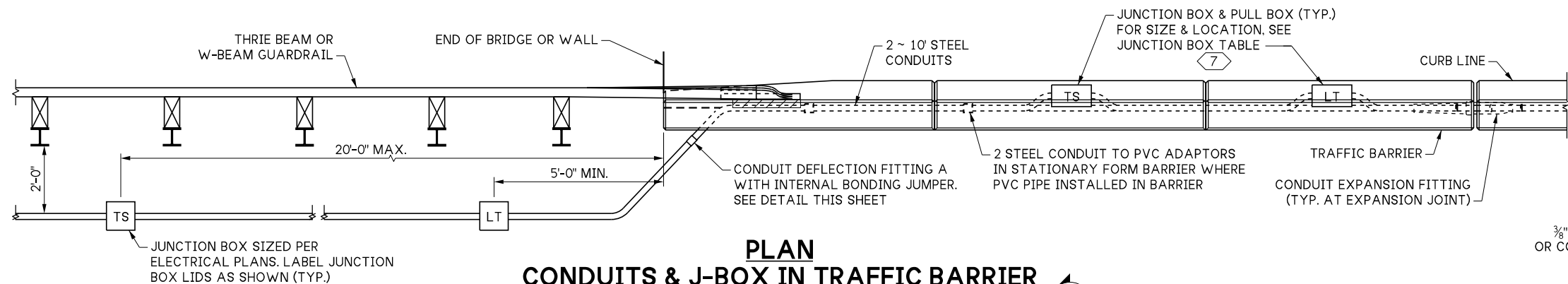
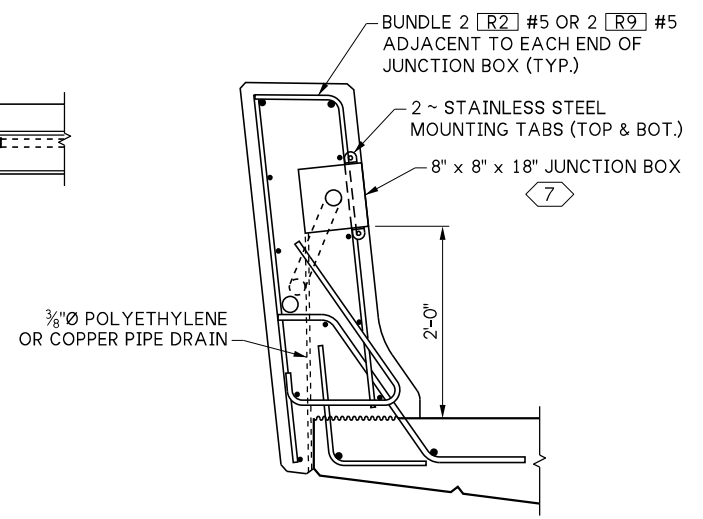


LAST REVISED: 08/14/2025

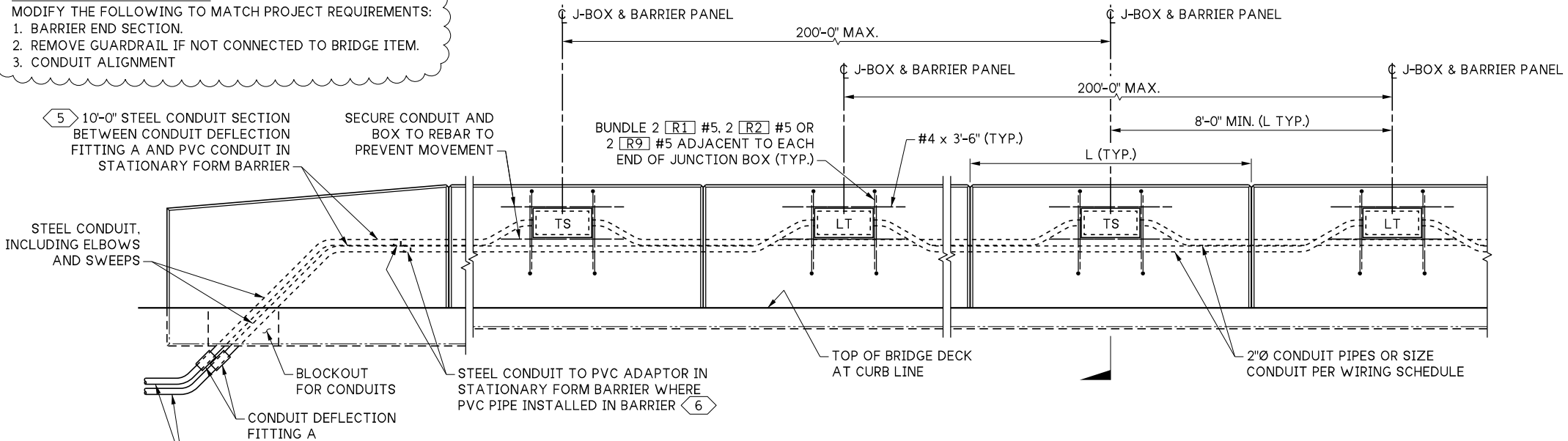


**PLAN**  
**CONDUITS & J-BOX IN TRAFFIC BARRIER**

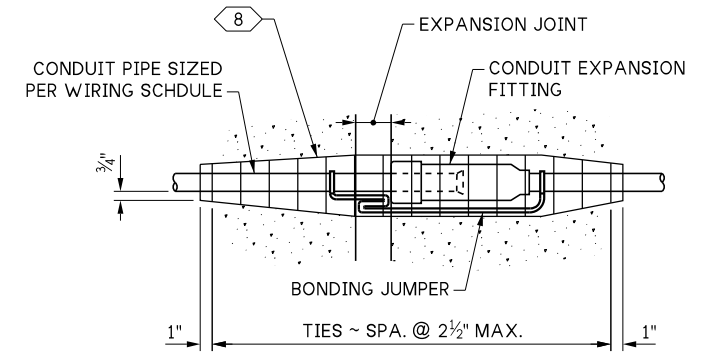


**SECTION A**

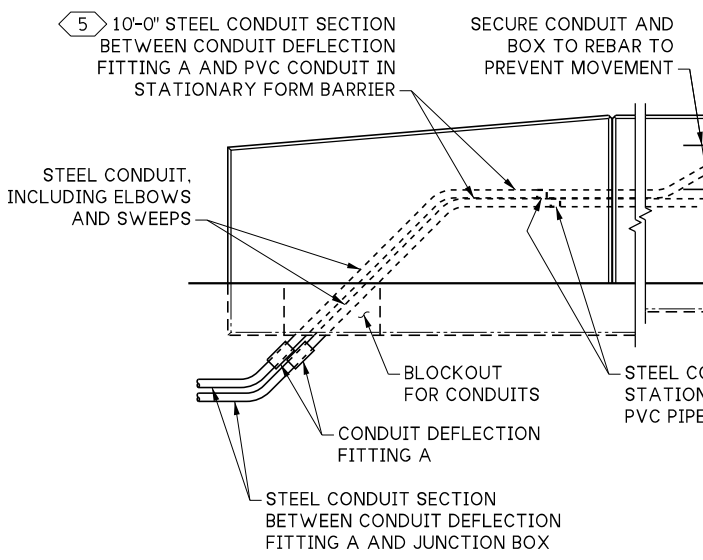
**NOTE TO DESIGNERS:**  
MODIFY THE FOLLOWING TO MATCH PROJECT REQUIREMENTS:  
1. BARRIER END SECTION.  
2. REMOVE GUARDRAIL IF NOT CONNECTED TO BRIDGE ITEM.  
3. CONDUIT ALIGNMENT



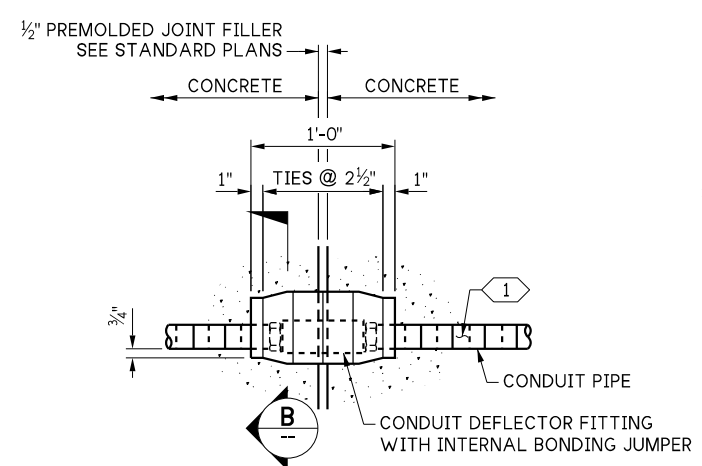
**ELEVATION**  
**CONDUITS & J-BOX IN TRAFFIC BARRIER**



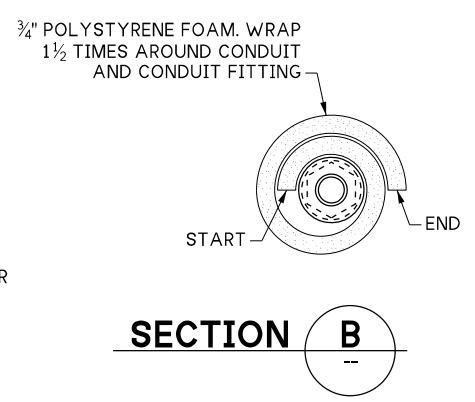
**CONDUIT EXPANSION FITTING**  
CONDUIT FITTING - (TYPE AX FOR MOVEMENT OF ± 2") AT BRIDGE EXPANSION JOINTS



**CONDUIT DEFLECTION FITTING A**  
CONDUIT FITTING - TYPE DX FOR DEFLECTION OF 30° AND 3/4" MOVEMENT



**CONDUIT DEFLECTION FITTING B**  
CONDUIT FITTING - TYPE DX FOR DEFLECTION OF 30° AND 3/4" MOVEMENT



**SECTION B**

**KEY NOTES:**

- 1 WHERE CONDUIT IN A STRUCTURE IS ROUTED ACROSS A JOINT, WRAP STEEL CONDUIT PIPE FOR 1'-0" ON EACH SIDE OF JOINT. PIPE WRAP TAPE SHALL BE 2" WIDE, 20 MIL THICK, AND INSTALLED WITH A MINIMUM OF 1" OVERLAP.
- 2 PLACE AT CONDUIT PIPE EXIT FROM STRUCTURE AND SHALL BE IN NEUTRAL STATE AFTER INSTALLATION.
- 3 CONDUIT PIPES PLACED THROUGH RETAINING WALL TRAFFIC BARRIER SHALL BE FITTED WITH DEFLECTION FITTINGS AT A MAXIMUM SPACING OF 120'. THE DEFLECTION FITTINGS SHALL BE PLACED AT THE TRAFFIC BARRIER OPEN JOINT THAT COINCIDES WITH THE RETAINING WALL EXPANSION JOINT.
- 4 LABEL JUNCTION BOX COVER IN ACCORDANCE WITH STANDARD SPECIFICATION SECTION 9-29.2(4). ADJACENT JUNCTION BOXES ARE SHOWN CENTERED BETWEEN ADJACENT DUMMY JOINTS. IF THE DISTANCE BETWEEN ADJACENT DUMMY JOINTS IS 16'-0" OR GREATER, PLACE ADJACENT JUNCTION BOXES SYMMETRICALLY ON EITHER SIDE OF THE CENTER OF ONE DUMMY PANEL WHILE MAINTAINING 8'-0" MINIMUM BETWEEN CENTER LINES OF THE JUNCTION BOXES.
- 5 TERMINATE STEEL CONDUIT IN JUNCTION BOX IF LESS THAN 10'-0" FROM ELBOW OR SWEEP.
- 6 INSTALL ONLY WHERE CONDUIT IS HORIZONTAL.
- 7 NEMA 4X IN STATIONARY FORM BARRIER, OR NEMA 3R IN SLIP FORM BARRIER. MOUNT JUNCTION BOX SO COVER IS FLUSH WITH BARRIER. CAN BE RECESSED UP TO 1/8".
- 8 3'-0" LONG EXPANDED POLYSTYRENE SLEEVE AROUND CONDUIT. DUCT TAPE SEAMS AND ENDS TO SEAL AND PREVENT CONCRETE FROM BONDING WITH FITTING AND CONDUIT.

10.2-A5-3

FILE NAME: 10.2-A5-3_Traffic Barrier Shape F42_3 of 3.dgn				REGION NO. 10	STATE WASH	<p><b>PRELIMINARY PLAN</b> <b>NOT FOR CONSTRUCTION</b></p>	SEE CERTIFICATION SHEET DATE	SEE CERTIFICATION SHEET DATE	STANDARD DESIGN DRAWINGS TRAFFIC BARRIERS		PLAN REF NO.		
BRIDGE DES. ENG.													
BRIDGE PROJ. ENG.													SHEET
SUPERVISOR													OF
DESIGNED BY											SHEETS		
CHECKED BY													
ENTERED BY													
PRELIM. PLAN BY													
ARCH. / SPEC.													
PLOT DATE: 07-Oct-2025 PLOT TIME: 10:19:32 AM PLOTTED BY: deboejak				FILE PATH: pw://projectstore.wsdot.wa.gov:WSDOT/Documents/_HQ/Bridge & Structures/Bridge Design/_Design Standards/Standard Drawings and Details/Barriers and Railings/F-Shape/_DGN/10.2-A5-3_Traffic Barrier Shape F42_3 of 3.dgn		STAMP BOX		STAMP BOX		TRAFFIC BARRIER SHAPE F 42" DETAILS 3 OF 3			