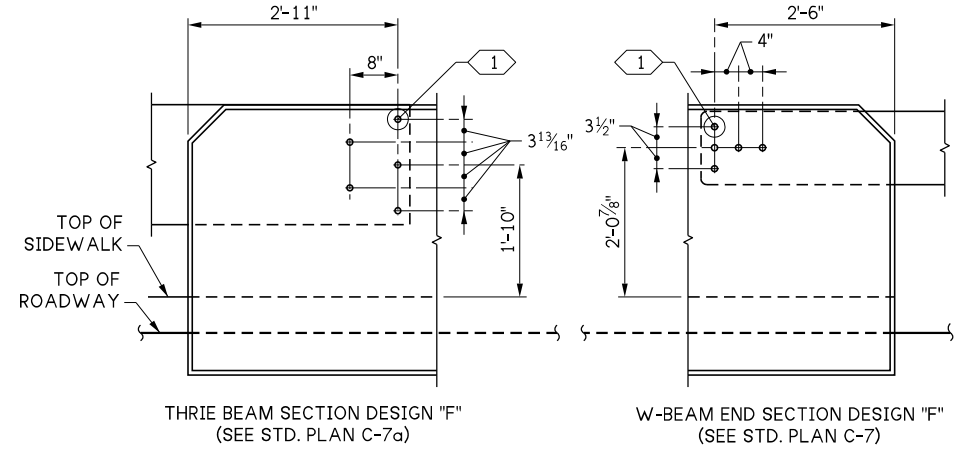


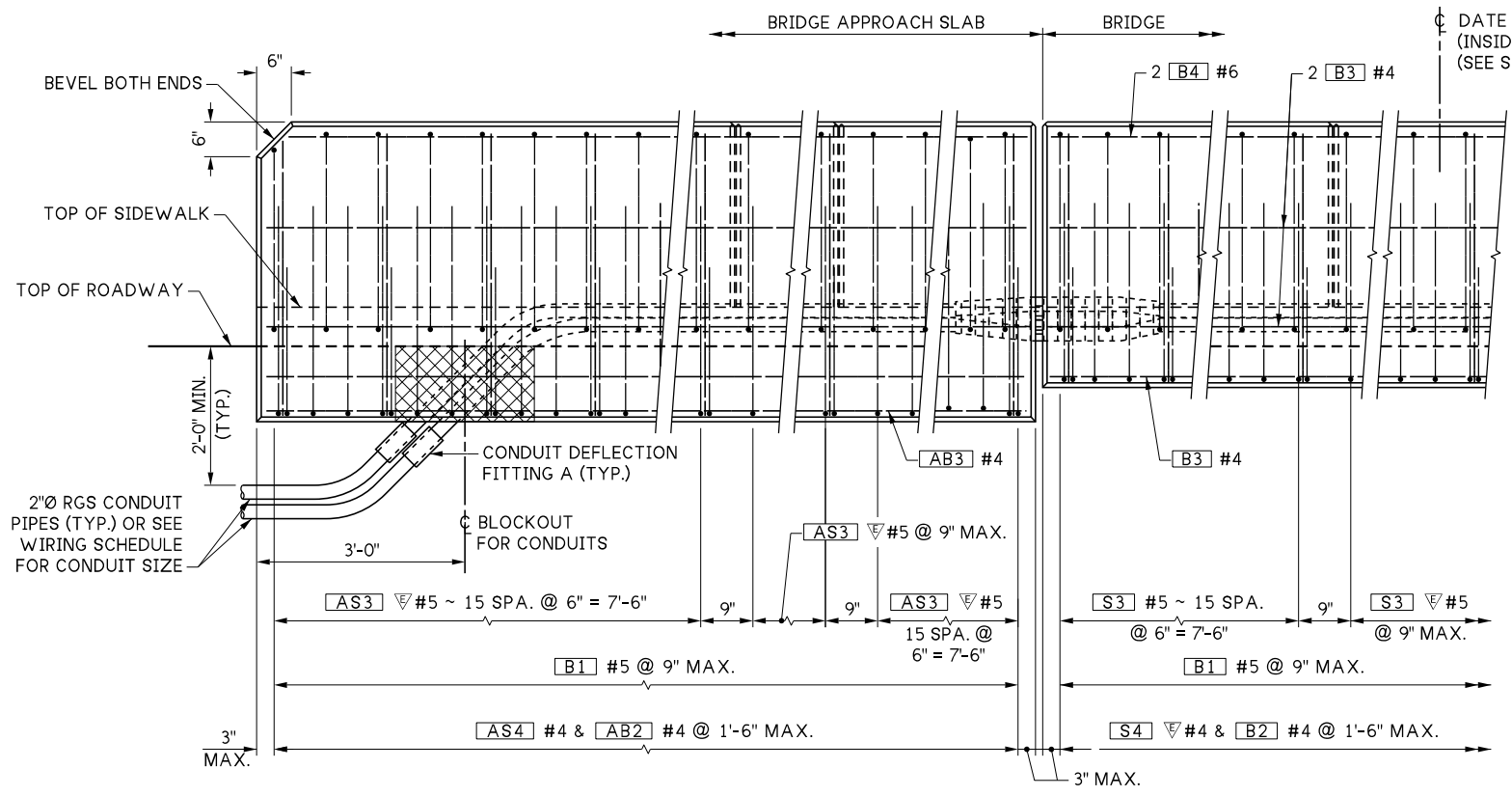
**KEY NOTES:**

- 1 PROVIDE 7/8"Ø ROCKET/KOHLER F-50, LANCASTER MALLEABLE, OR DAYTON/RICHMOND F-62 FLARED THIN SLAB FERRULE INSERTS OR APPROVED EQUAL (TYP.). RESIN-BONDED ANCHORS MAY BE SUBSTITUTED.
- 2 INCLUDE IN SUPERSTRUCTURE BAR LIST.
- 3 MIN. HEIGHT. PEDESTRIAN BARRIER HEIGHT MAY VARY IF REQUIRED TO PROVIDE SMOOTH PROFILE.

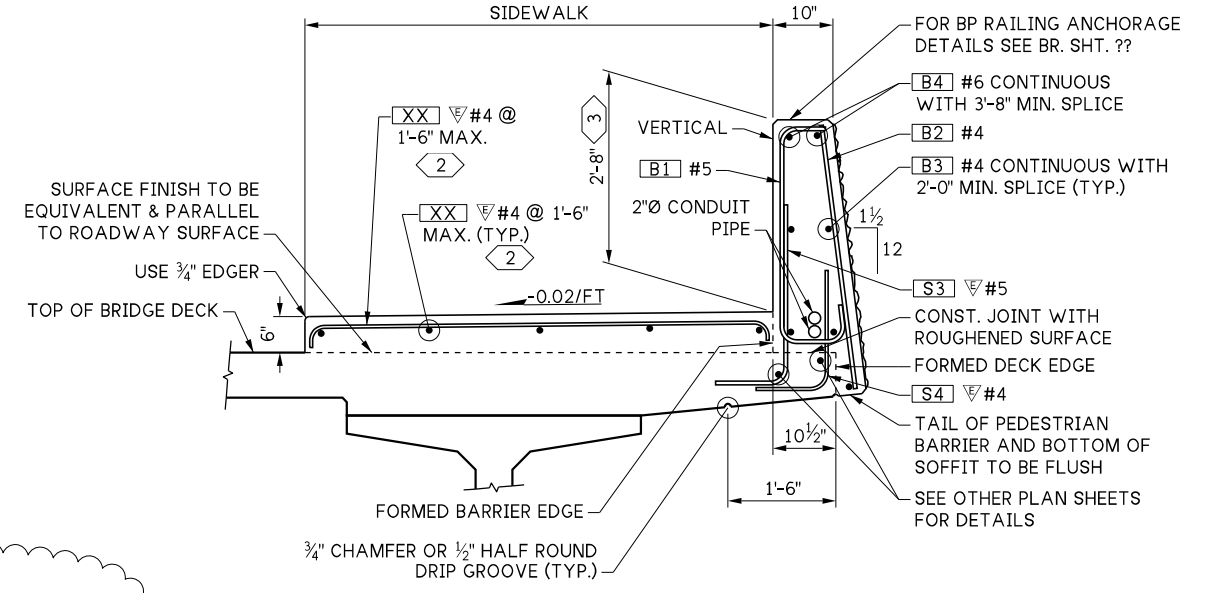
**PLAN PEDESTRIAN BARRIER**  
 BARRIER CONTINUOUS BETWEEN BRIDGE DECK EXPANSION JOINTS. CONSTRUCTION JOINTS WITH SHEAR KEYS ARE PERMISSIBLE AT DUMMY JOINT LOCATIONS. FORM JOINTS BETWEEN DUMMY JOINTS SHALL NOT BE PERMITTED.



**OUTSIDE ELEVATION PEDESTRIAN BARRIER ~ GUARDRAIL CONNECTION**  
 (WHERE SHOWN ON LAYOUT)



**OUTSIDE ELEVATION END OF PEDESTRIAN BARRIER**  
 SHOWN WITH BRIDGE APPROACH SLAB



**TYPICAL SECTION PEDESTRIAN BARRIER**  
 SHOWN ON BRIDGE

**NW REGION:**  
 TERMINATE EACH CONDUIT PIPE AT SEPARATE JUNCTION BOXES OFF END OF BRIDGE AS SHOWN IN LAYOUT.

**NOTE TO DESIGNERS:**  
 The non-applicable text should be removed from the actual bridge plans. Additional [B3] bars should be added to limit to 1'-6" spacing when sidewalk increases barrier height.

LAST REVISED: 07/14/2025

10.2-A4-1

FILE NAME: 10.2-A4-1_Pedestrian Barrier Details 1 of 3.dgn				REGION NO.: 10	STATE: WASH	<p>PRELIMINARY PLAN NOT FOR CONSTRUCTION</p>	STANDARD DESIGN DRAWINGS TRAFFIC BARRIERS		PLAN REF NO.		
BRIDGE DES. ENG.				JOB NUMBER			SEE CERTIFICATION SHEET DATE STAMP BOX	PEDESTRIAN BARRIER DETAILS 1 OF 3		SHEET	
BRIDGE PROJ. ENG.				CONTRACT NO.				SEE CERTIFICATION SHEET DATE STAMP BOX			OF
SUPERVISOR											SHEETS
DESIGNED BY											
CHECKED BY											
ENTERED BY											
PRELIM. PLAN BY											
ARCH. / SPEC.											
PLOT DATE: 07-Oct-2025 PLOT TIME: 9:00:08 AM PLOTTED BY: deboejak				FILE PATH: pw://projectstore.wsdot.wa.gov:WSDOT/Documents/_HQ/Bridge & Structures/Bridge Design/_Design Standards/Standard Drawings and Details/Barriers and Railings/Pedestrian Barrier/_DGN/10.2-A4-1_Pedestrian Barrier Details 1 of 3.dgn							