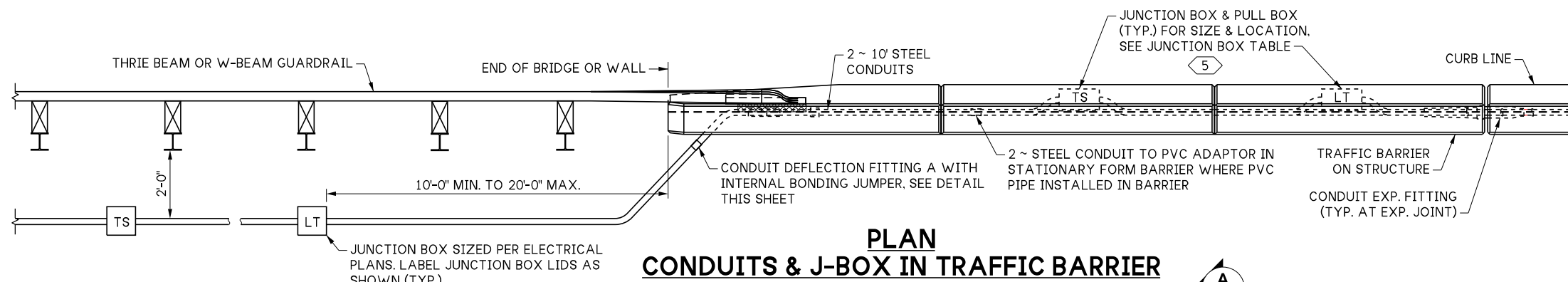
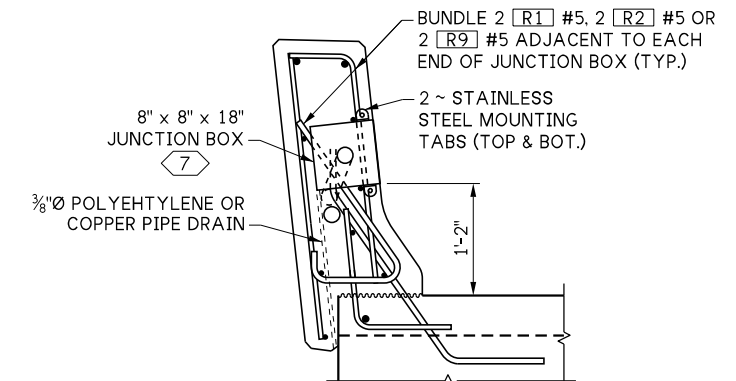


LAST REVISED: 07/21/2025

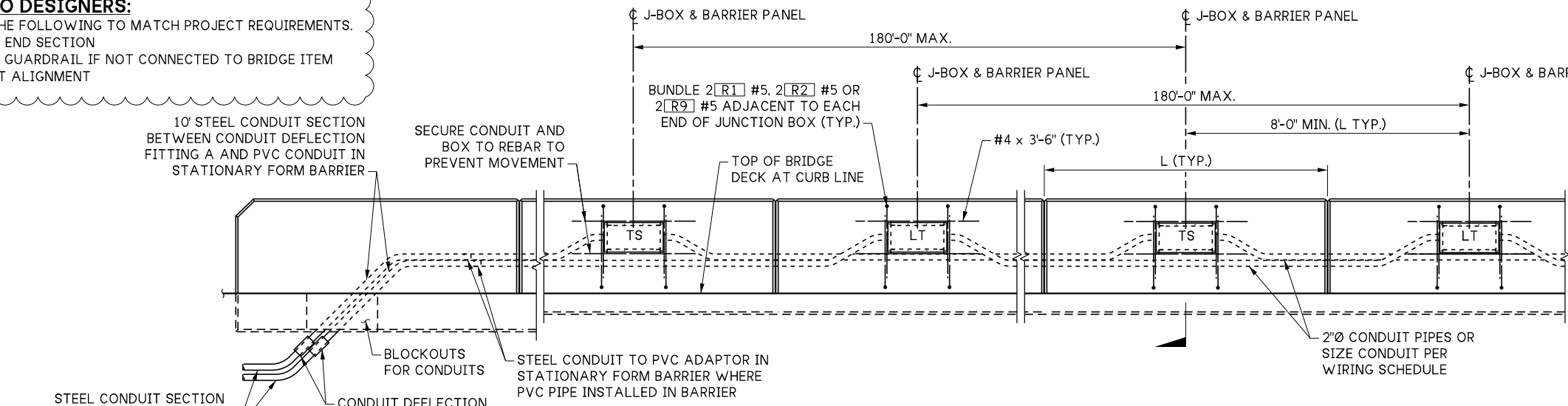


**PLAN  
CONDUITS & J-BOX IN TRAFFIC BARRIER**

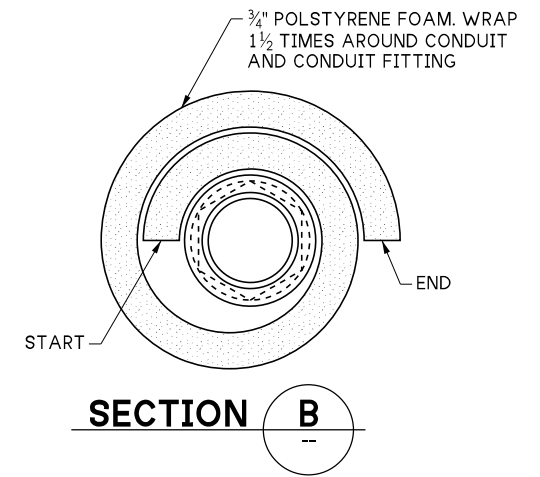


**SECTION A**

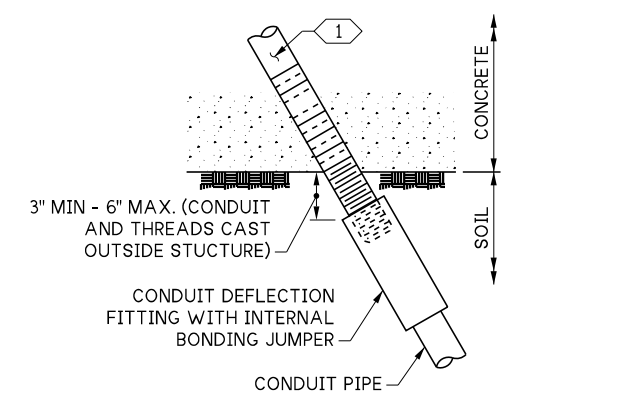
**NOTE TO DESIGNERS:**  
 MODIFY THE FOLLOWING TO MATCH PROJECT REQUIREMENTS.  
 1. BARRIER END SECTION  
 2. REMOVE GUARDRAIL IF NOT CONNECTED TO BRIDGE ITEM  
 3. CONDUIT ALIGNMENT



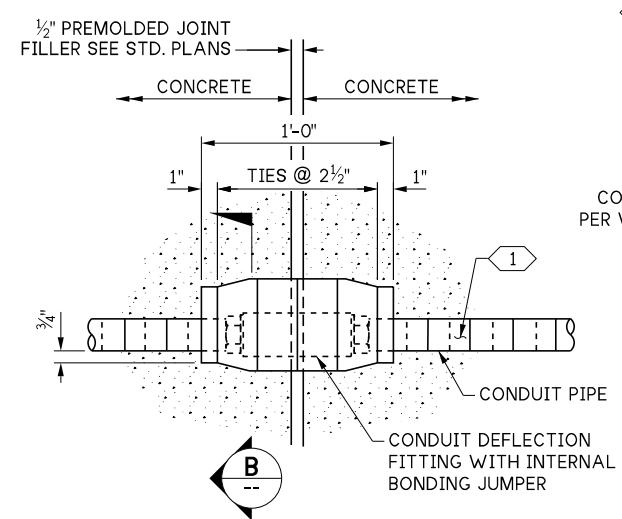
**ELEVATION  
CONDUITS & J-BOX IN TRAFFIC BARRIER**



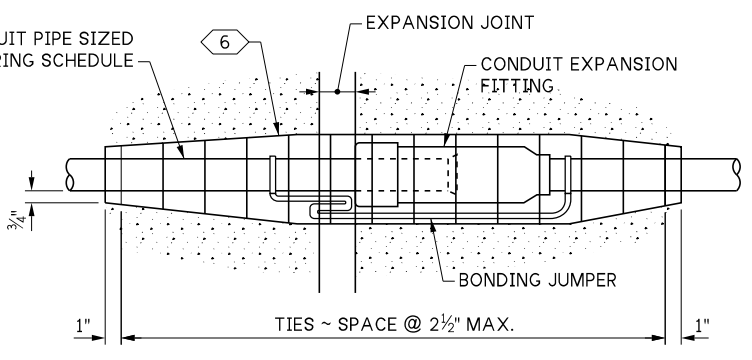
**SECTION B**



**CONDUIT DEFLECTION FITTING A**  
 CONDUIT FITTING - TYPE DX FOR DEFLECTION OF 30° AND 3/4\"/>



**CONDUIT DEFLECTION FITTING B**  
 CONDUIT FITTING - TYPE DX FOR DEFLECTION OF 30° AND 3/4\"/>



**CONDUIT EXPANSION FITTING**  
 CONDUIT FITTING - (TYPE AX FOR MOVEMENT OF ± 2\") AT BRIDGE EXPANSION JOINTS

**KEY NOTES:**

- 1 WHERE CONDUIT IN A STRUCTURE IS ROUTED ACROSS A JOINT, WRAP STEEL CONDUIT PIPE FOR 1'-0" ON EACH SIDE OF JOINT. PIPE WRAP TAPE SHALL BE 2" WIDE, 20 MIL THICK, AND INSTALLED WITH A MINIMUM OF 1" OVERLAP.
- 2 PLACE AT CONDUIT PIPE EXIT FROM STRUCTURE AND SHALL BE IN NEUTRAL STATE AFTER INSTALLATION.
- 3 CONDUIT PIPES PLACED THROUGH RETAINING WALL TRAFFIC BARRIER SHALL BE FITTED WITH DEFLECTION FITTINGS AT A MAXIMUM SPACING OF 120'. THE DEFLECTION FITTINGS SHALL BE PLACED AT THE TRAFFIC BARRIER OPEN JOINT THAT COINCIDES WITH THE RETAINING WALL EXPANSION JOINT.
- 4 LABEL JUNCTION BOX COVER IN ACCORDANCE WITH STANDARD SPECIFICATION SECTION 9-29.2(4). ADJACENT JUNCTION BOXES ARE SHOWN CENTERED BETWEEN ADJACENT DUMMY JOINTS. IF THE DISTANCE BETWEEN ADJACENT DUMMY JOINTS IS 16'-0" OR GREATER, PLACE ADJACENT JUNCTION BOXES SYMMETRICALLY ON EITHER SIDE OF THE CENTER OF ONE DUMMY PANEL WHILE MAINTAINING 8'-0" MINIMUM BETWEEN CENTER LINES OF THE JUNCTION BOXES.
- 5 NEMA 4X IN STATIONARY FORM BARRIER, OR NEMA 3R IN SLIP FORM BARRIER, MOUNT JUNCTION BOX SO COVER IS FLUSH WITH BARRIER. CAN BE RECESSED UP TO 3/8\"/>
- 6 3'-0" LONG EXPANDED POLYSTYRENE SLEEVE AROUND CONDUIT. DUCT TAPE SEAMS AND ENDS TO SEAL AND PREVENT CONCRETE FROM BONDING WITH FITTING AND CONDUIT.

10.2-A-2-3

FILE NAME: 10.2-A-2-3_Shape F Traffic Barrier on Flat Slab 3 of 3.dgn				REGION NO. 10	STATE WASH		STANDARD DESIGN DRAWINGS TRAFFIC BARRIERS	PLAN REF NO.
BRIDGE DES. ENG.				JOB NUMBER				SHEET
BRIDGE PROJ. ENG.				CONTRACT NO.		PRELIMINARY PLAN NOT FOR CONSTRUCTION	TRAFFIC BARRIER - SHAPE F FLAT SLAB - DETAILS 3 OF 3	OF
SUPERVISOR								SHEETS
DESIGNED BY								
CHECKED BY								
ENTERED BY								
PRELIM. PLAN BY								
ARCH. / SPEC.								
REVISION				DATE	BY			
PLOT DATE: 07-Oct-2025				PLOT TIME: 8:46:31 AM		PLOTTED BY: deboejak		FILE PATH: pw://projectstore.wsdot.wa.gov:WSDOT/Documents/_HQ/Bridge & Structures/Bridge Design/_Design Standards/Standard Drawings and Details/Barriers and Railings/F-Shape on Flat Slab/_DGN/10.2-A-2-3_Shape F Traffic Barrier on Flat Slab 3 of 3.dgn