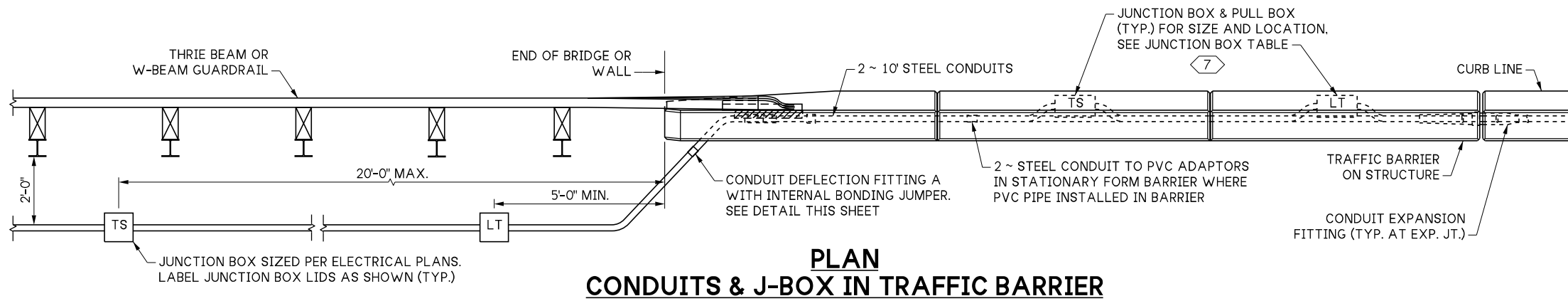
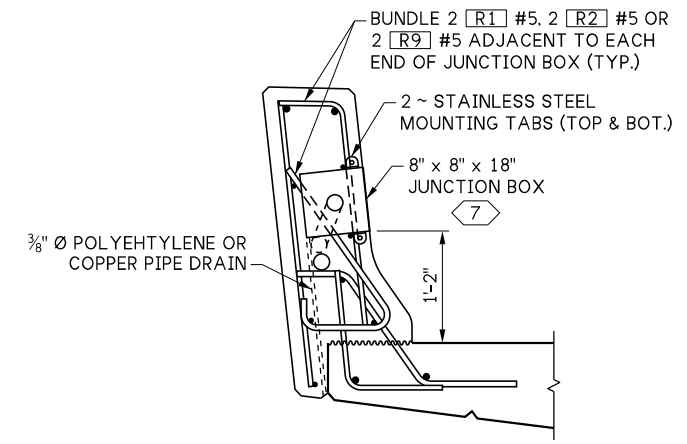


LAST REVISED: 07/15/2025

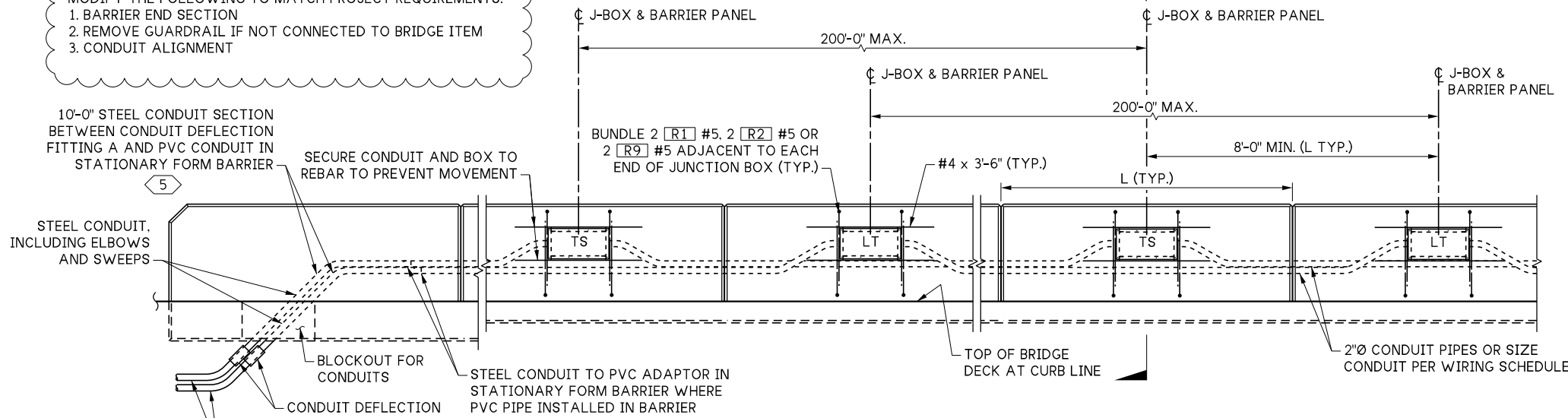


**PLAN
CONDUITS & J-BOX IN TRAFFIC BARRIER**

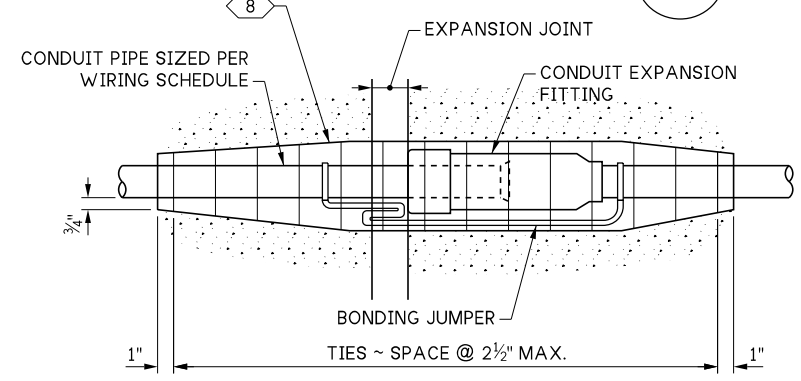


SECTION A

NOTE TO DESIGNERS:
 MODIFY THE FOLLOWING TO MATCH PROJECT REQUIREMENTS:
 1. BARRIER END SECTION
 2. REMOVE GUARDRAIL IF NOT CONNECTED TO BRIDGE ITEM
 3. CONDUIT ALIGNMENT



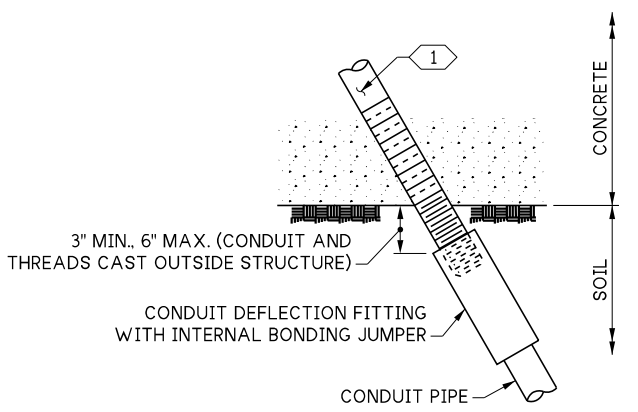
**ELEVATION
CONDUITS & J-BOX IN TRAFFIC BARRIER**



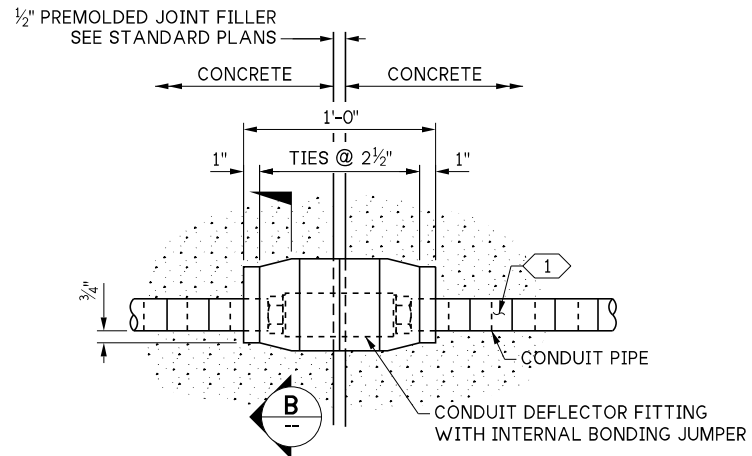
CONDUIT EXPANSION FITTING
 CONDUIT FITTING - (TYPE AX FOR MOVEMENT OF ± 2") AT BRIDGE EXPANSION JOINTS

KEY NOTES:

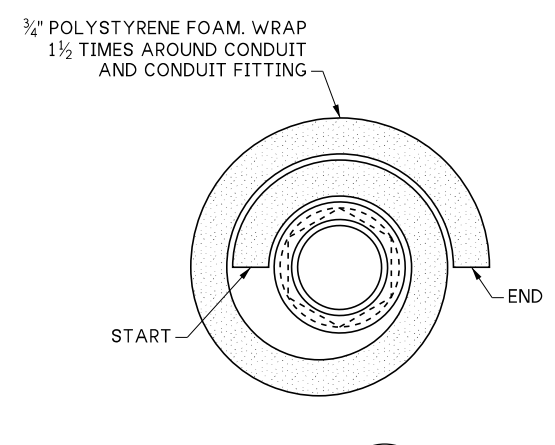
- 1 WHERE CONDUIT IN A STRUCTURE IS ROUTED ACROSS A JOINT, WRAP STEEL CONDUIT PIPE FOR 1'-0" ON EACH SIDE OF JOINT. PIPE WRAP TAPE SHALL BE 2" WIDE, 20 MIL THICK, AND INSTALLED WITH A MINIMUM OF 1" OVERLAP.
- 2 PLACE AT CONDUIT PIPE EXIT FROM STRUCTURE AND SHALL BE IN NEUTRAL STATE AFTER INSTALLATION.
- 3 CONDUIT PIPES PLACED THROUGH RETAINING WALL TRAFFIC BARRIER SHALL BE FITTED WITH DEFLECTION FITTINGS AT A MAXIMUM SPACING OF 120'. THE DEFLECTION FITTINGS SHALL BE PLACED AT THE TRAFFIC BARRIER OPEN JOINT THAT COINCIDES WITH THE RETAINING WALL EXPANSION JOINT.
- 4 LABEL JUNCTION BOX COVER IN ACCORDANCE WITH STANDARD SPECIFICATION SECTION 9-29.2(4). ADJACENT JUNCTION BOXES ARE SHOWN CENTERED BETWEEN ADJACENT DUMMY JOINTS. IF THE DISTANCE BETWEEN ADJACENT DUMMY JOINTS IS 16'-0" OR GREATER, PLACE ADJACENT JUNCTION BOXES SYMMETRICALLY ON EITHER SIDE OF THE CENTER OF ONE DUMMY PANEL WHILE MAINTAINING 8'-0" MINIMUM BETWEEN CENTER LINES OF THE JUNCTION BOXES.
- 5 TERMINATE STEEL CONDUIT IN JUNCTION BOX IF LESS THAN 10'-0" FROM ELBOW OR SWEEP.
- 6 INSTALL ONLY WHERE CONDUIT IS HORIZONTAL.
- 7 NEMA 4X IN STATIONARY FORM BARRIER, OR NEMA 3R IN SLIP FORM BARRIER. MOUNT JUNCTION BOX SO COVER IS FLUSH WITH BARRIER. CAN BE RECESSED UP TO 1/8".
- 8 3'-0" LONG EXPANDED POLYSTYRENE SLEEVE AROUND CONDUIT. DUCT TAPE SEAMS AND ENDS TO SEAL AND PREVENT CONCRETE FROM BONDING WITH FITTING AND CONDUIT.



CONDUIT DEFLECTION FITTING A
 CONDUIT FITTING - TYPE DX FOR DEFLECTION OF 30° AND 3/4" MOVEMENT.



CONDUIT DEFLECTION FITTING B
 CONDUIT FITTING - TYPE DX FOR DEFLECTION OF 30° AND 3/4" MOVEMENT



SECTION B

10.2-A 1-3

FILE NAME: 10.2-A 1-3_Shape F Traffic Barrier Details 3 of 3.dgn BRIDGE DES. ENG. BRIDGE PROJ. ENG. SUPERVISOR DESIGNED BY CHECKED BY ENTERED BY PRELIM. PLAN BY ARCH. / SPEC.				REGION NO. 10	STATE WASH		STANDARD DESIGN DRAWINGS TRAFFIC BARRIERS	PLAN REF NO.
PLOT DATE: 02-Oct-2025 PLOT TIME: 3:17:39 PM PLOTTED BY: deboejak FILE PATH: pw://projectstore.wsdot.wa.gov:WSDOT/Documents/_HQ/Bridge & Structures/Bridge Design/_Design Standards/Standard Drawings and Details/Barriers and Railings/F-Shape/_DGN/10.2-A 1-3_Shape F Traffic Barrier Details 3 of 3.dgn				JOB NUMBER 	CONTRACT NO. 			PRELIMINARY PLAN NOT FOR CONSTRUCTION
REVISION 				DATE 	BY 	SEE CERTIFICATION SHEET DATE 	SEE CERTIFICATION SHEET DATE 	OF
				STAMP BOX	STAMP BOX	TRAFFIC BARRIER - SHAPE F DETAILS 3 OF 3	SHEETS	